

# Majocchi's disease (purpura annularis telangiectodes of Majocchi)

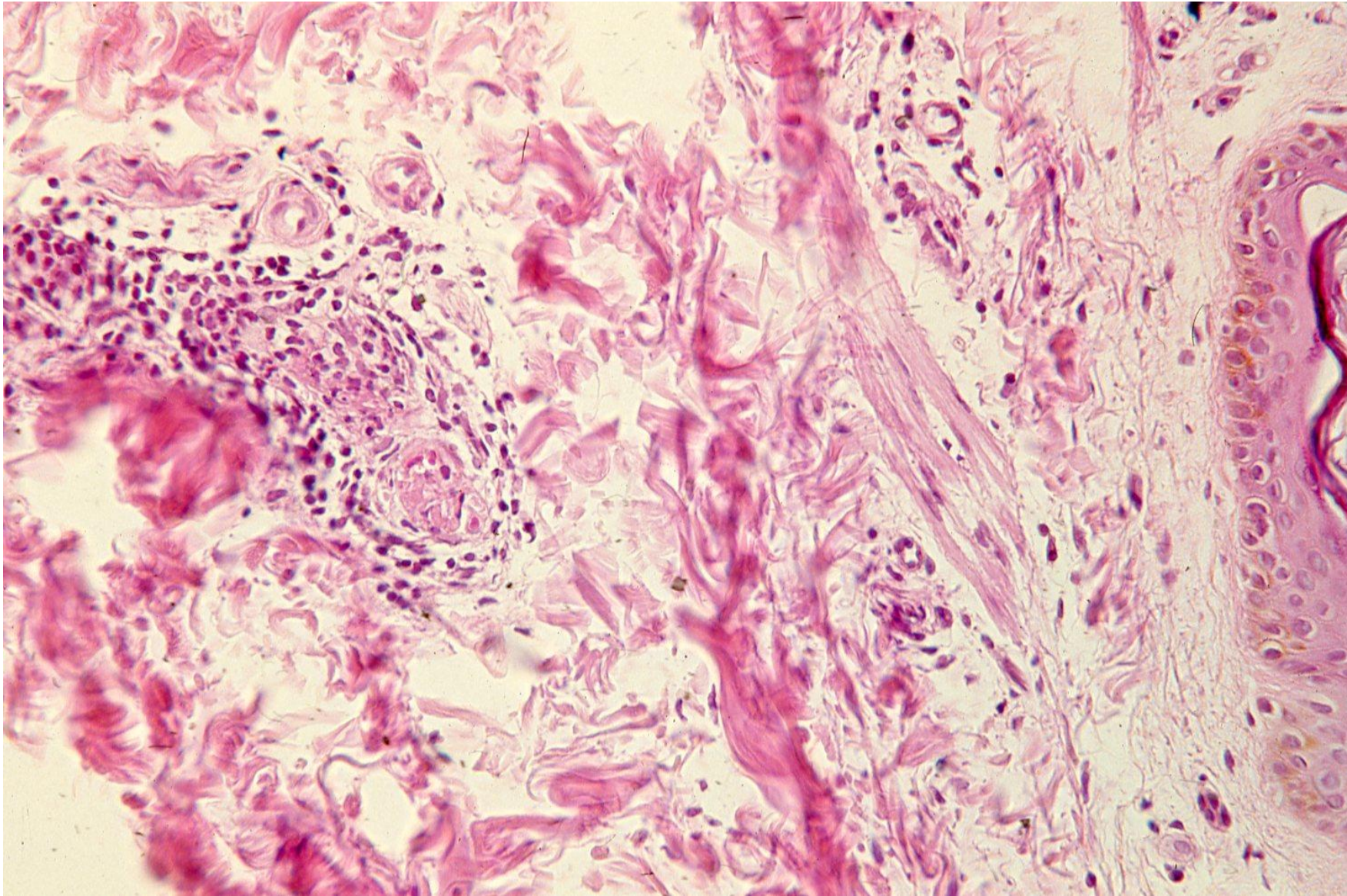
Majocchi's disease (purpura annularis telangiectodes of Majocchi) is featured by purple or bluish-red annular patches composed of dark red telangiectases with petechiae on the lower extremities. Majocchi's disease is a chronic recurrent condition with alternating improvement and flares. Treatments with topical steroids and ultraviolet therapy may be effective. The condition is not painful but frequently itchy. It may cause cosmetic issues and emotional stress for the affected individuals.

Ref.: Pu YJ, et al. Purpura annularis telangiectodes of Majocchi: a case report. *World J Clin Cases* 2023; 11(16): 3858-3863. doi: 10.12998/wjcc.v11.i16.3858



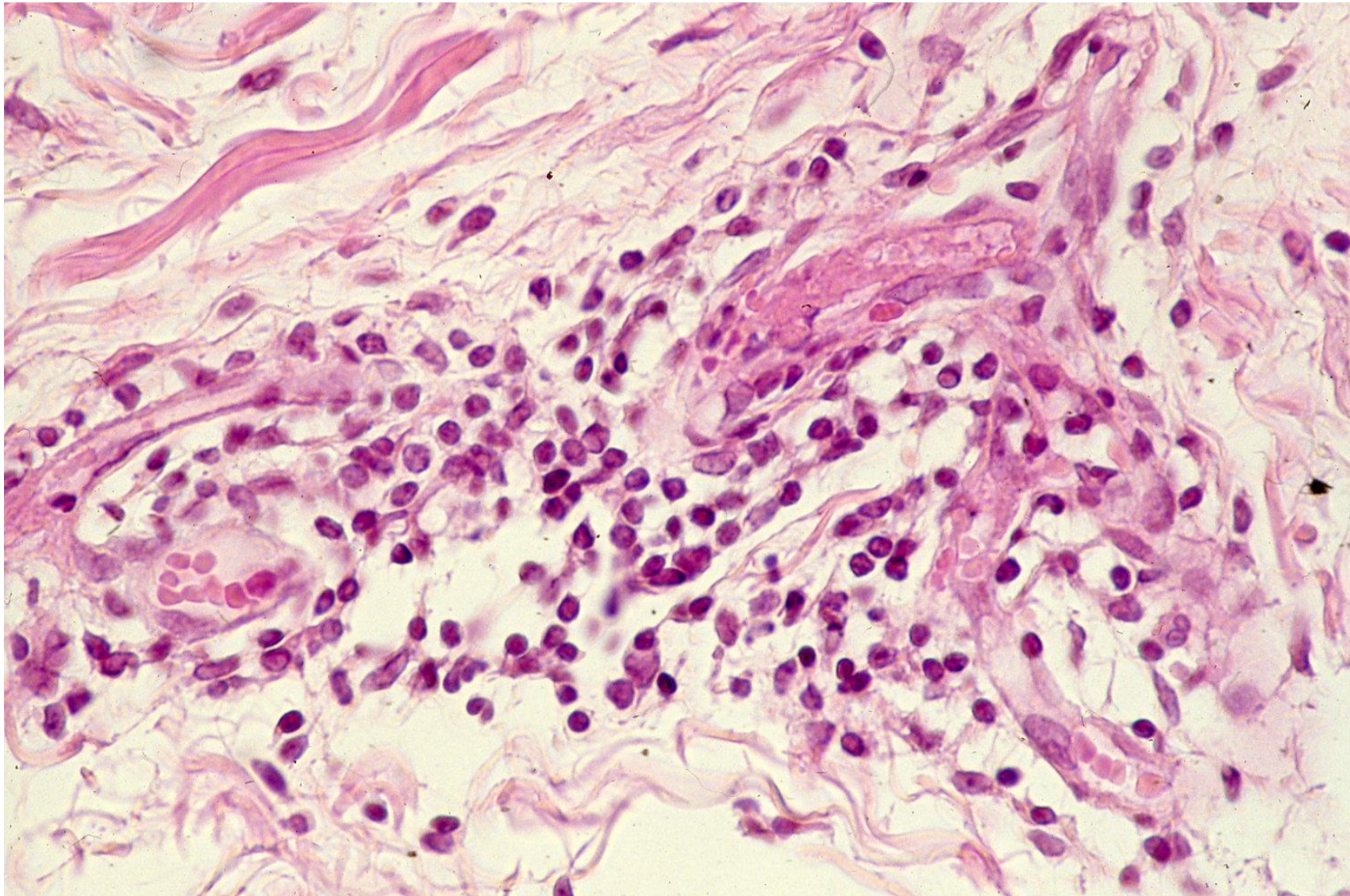
Majocchi's disease: gross appearance showing a purple or bluish-red annular patch. Borrowed from dovemed.com





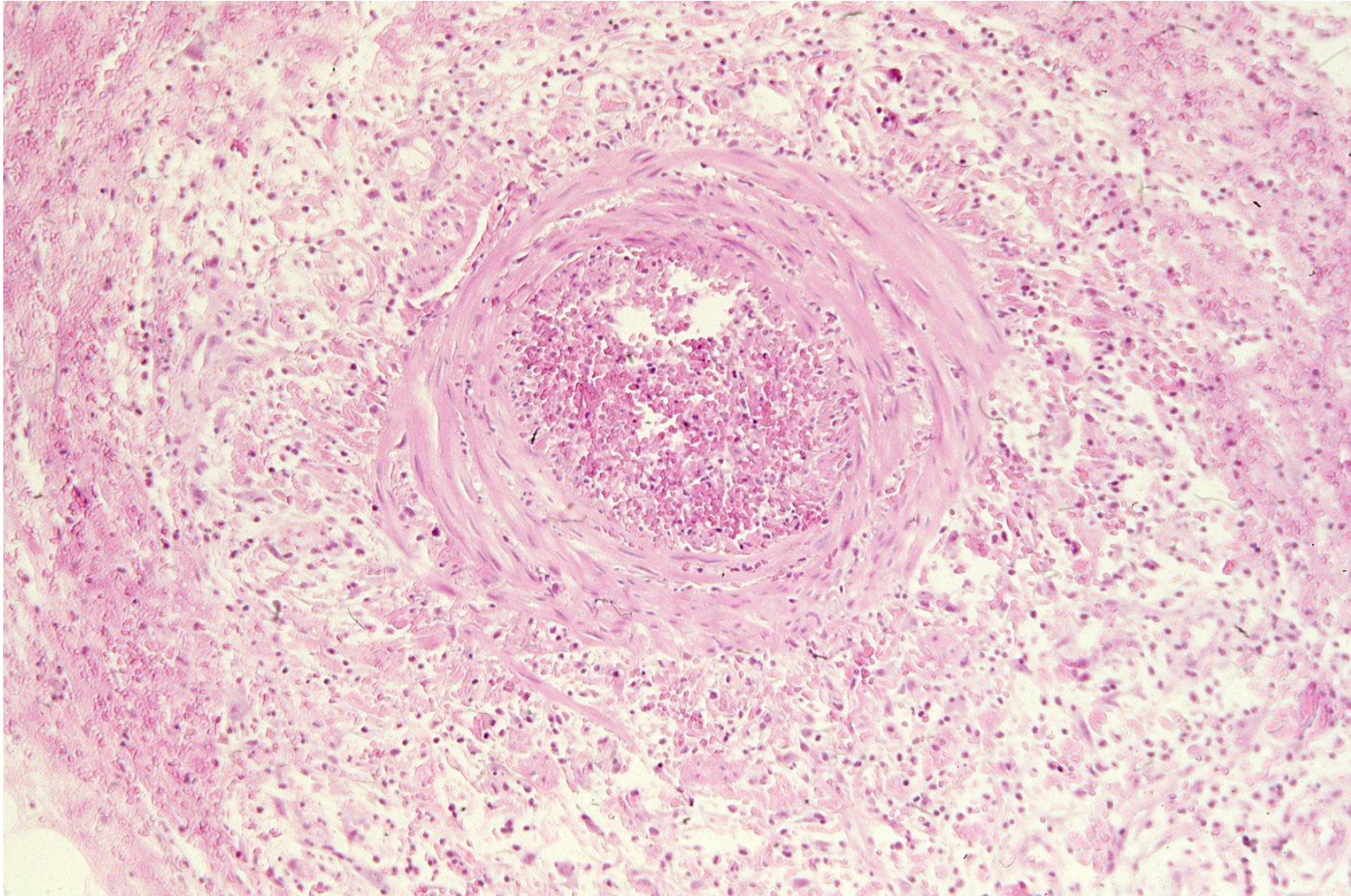
Majocchi's disease seen on the leg of a female patient aged 40'. Perivascular lymphocytic infiltration is seen around the vessel in the edematous dermis (H&E-1).





Majocchi's disease seen on the leg of a female patient aged 40'. Perivascular lymphocytic infiltration is seen around the vessel in the edematous dermis (H&E-2).





Majocchi's disease seen on the leg of a female patient aged 40'. Thrombosis is formed in the dilated dermal vein. Perivascular lymphocytic infiltration and red cell extravasation are seen in the edematous dermis (H&E-3).