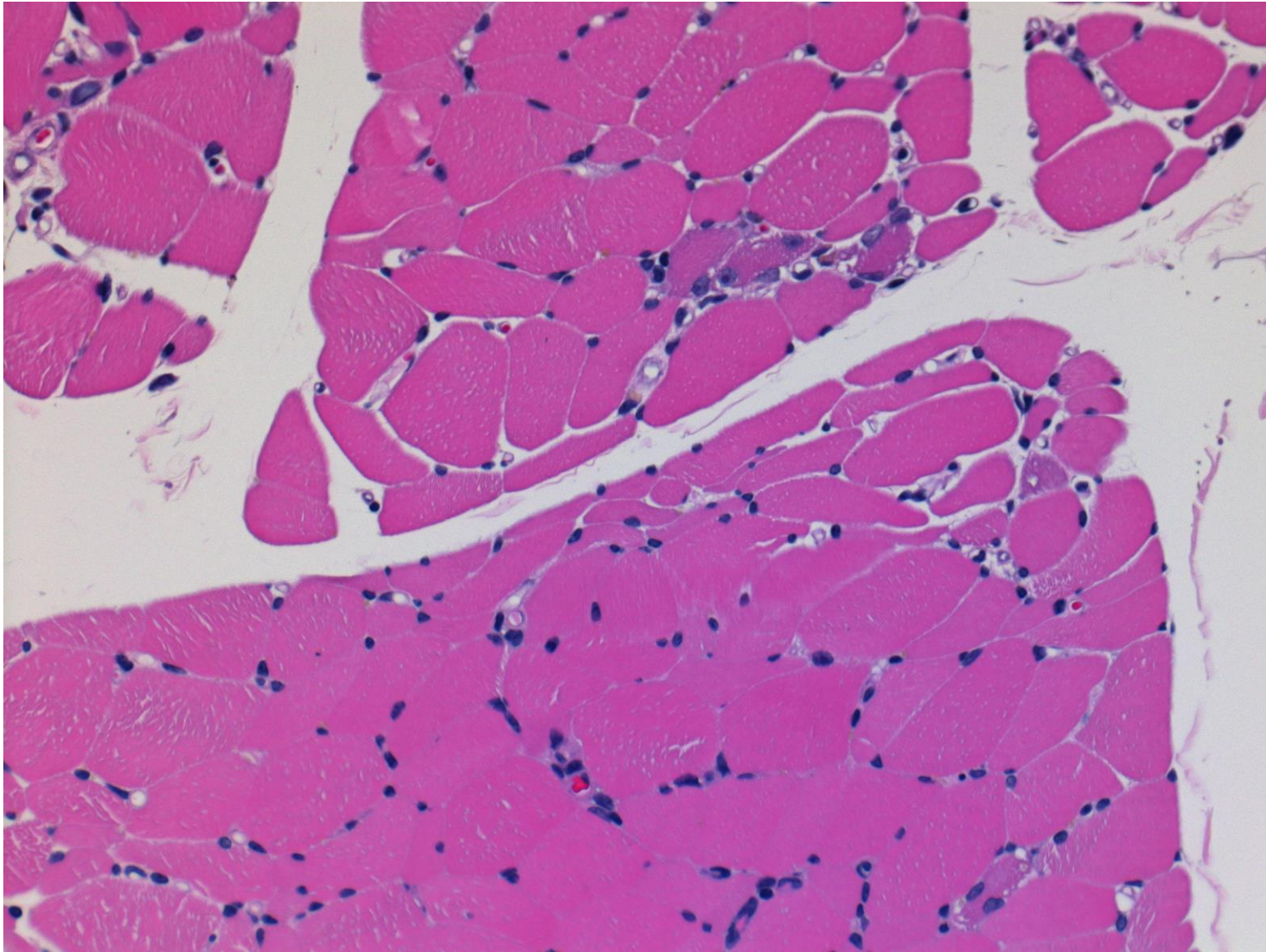


# CMV myositis with rhabdomyolysis

It has been reported that cytomegalovirus infection provokes severe rhabdomyolysis with acute respiratory failure.

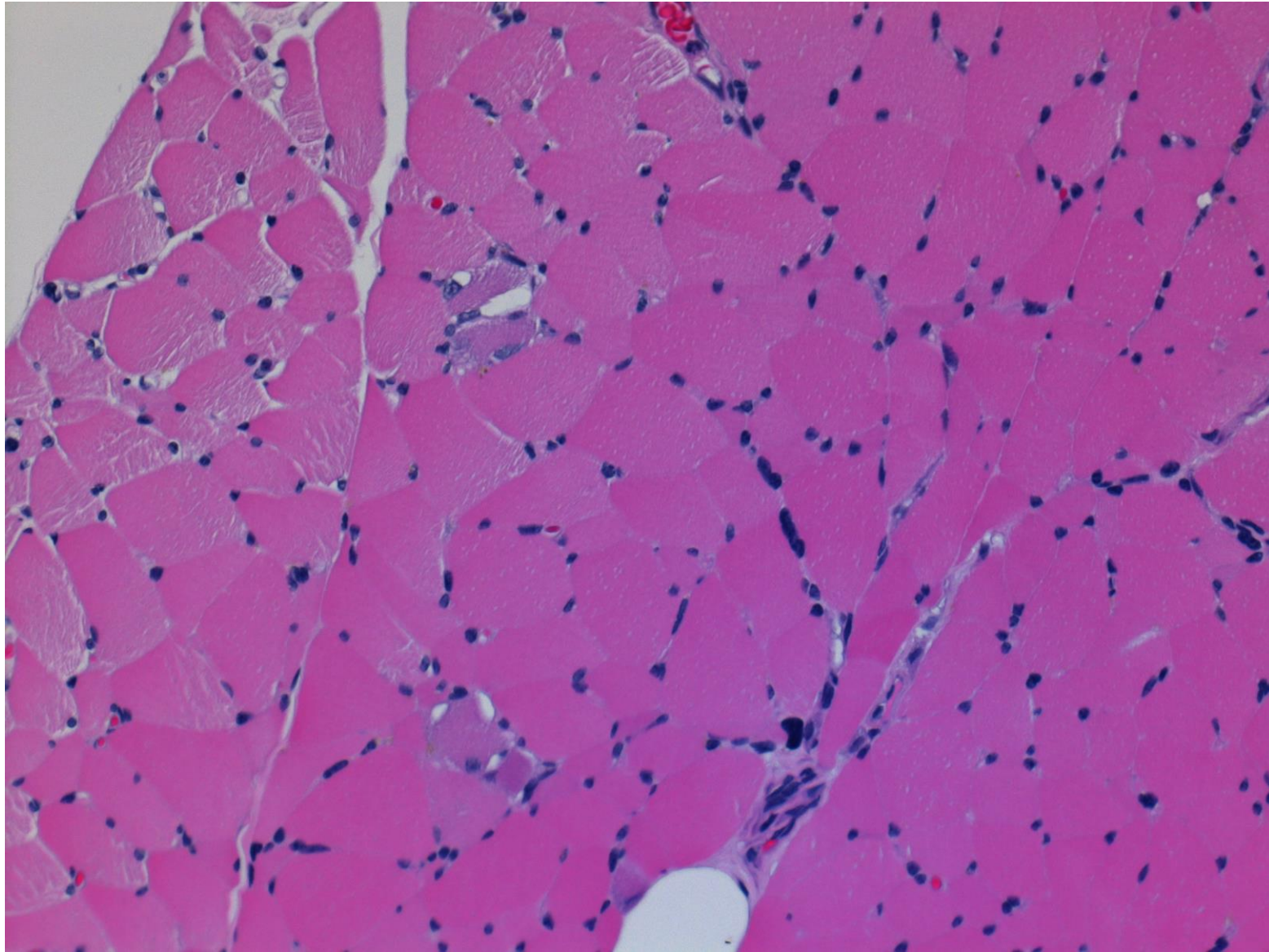
Ref.: Gindre H, et al. Severe rhabdomyolysis associated with a primary cytomegalovirus infection in an immunocompetent patient. *BMJ Case Rep* 2013; 2013: bcr2012008140. doi: 10.1136/bcr-2012-008140

A 69-year-old female patient with rheumatoid arthritis (rheumatoid factor/CCP antibody-positive) was complicated with CMV myositis with rhabdomyolysis. Methotrexate treatment was repeated against RA. She suddenly complained of systemic myalgia with malaise. Serum CK level was elevated (61,822 U/L), and myoglobinuria was detected. Soon, respiratory acidosis and thrombocytopenia were complicated. CMV antigenemia was positive. Then, striated muscle biopsy was performed. Steroid pulse therapy with administration of intravenous immunoglobulins and ganciclovil was effective to control the myositis.

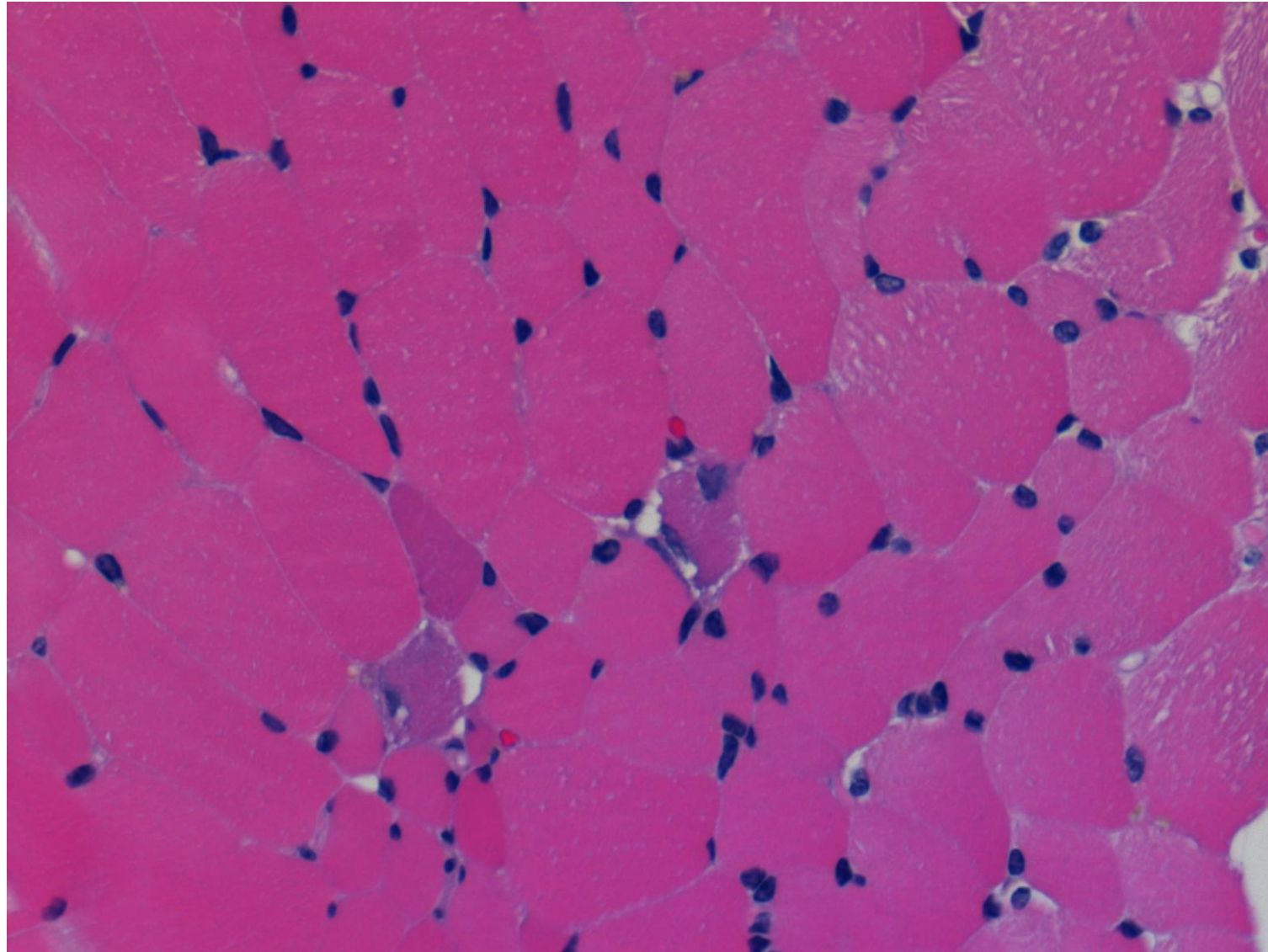


Striated muscle tissue shows focal and mild myogenic atrophy and regenerative myocytes with basophilic cytoplasm are observed. No cytomegalic inclusion bodies are detected. H&E-1



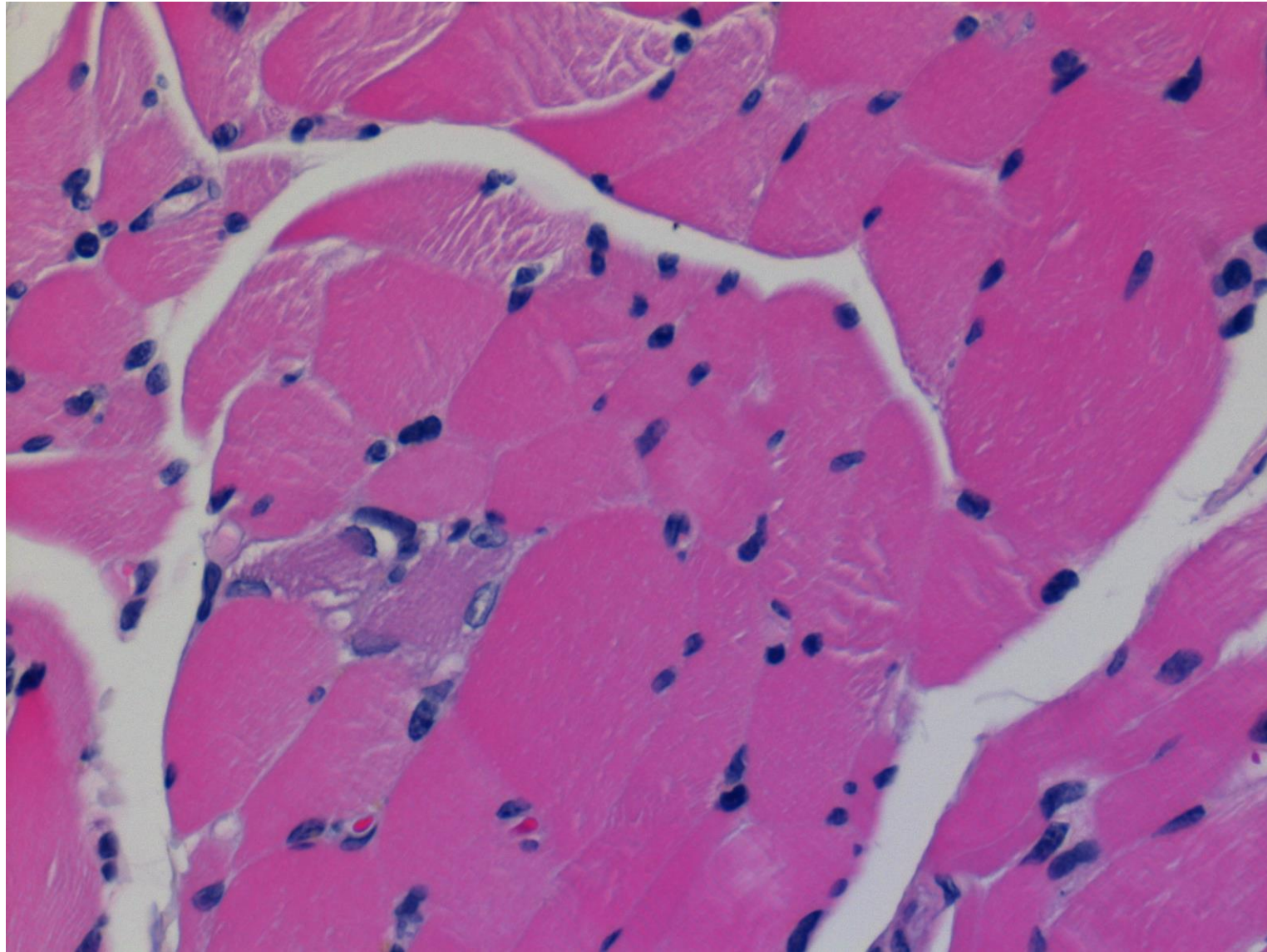


Striated muscle tissue shows a few regenerative myocytes with basophilic cytoplasm. No cytomegalic inclusion bodies are detected. H&E-2

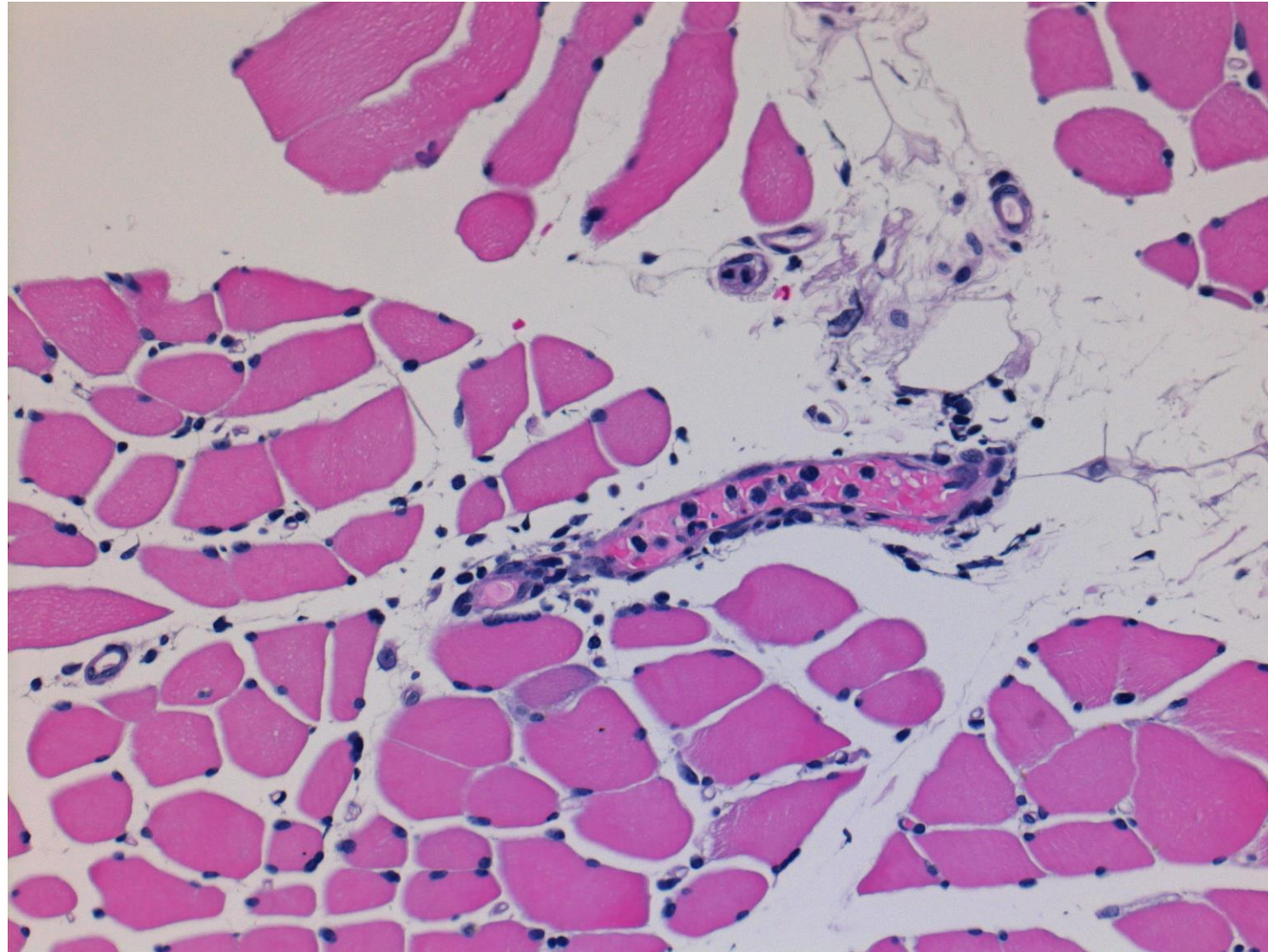


Striated muscle tissue shows a few regenerative myocytes with basophilic cytoplasm. No cytomegalic inclusion bodies are detected. H&E-3



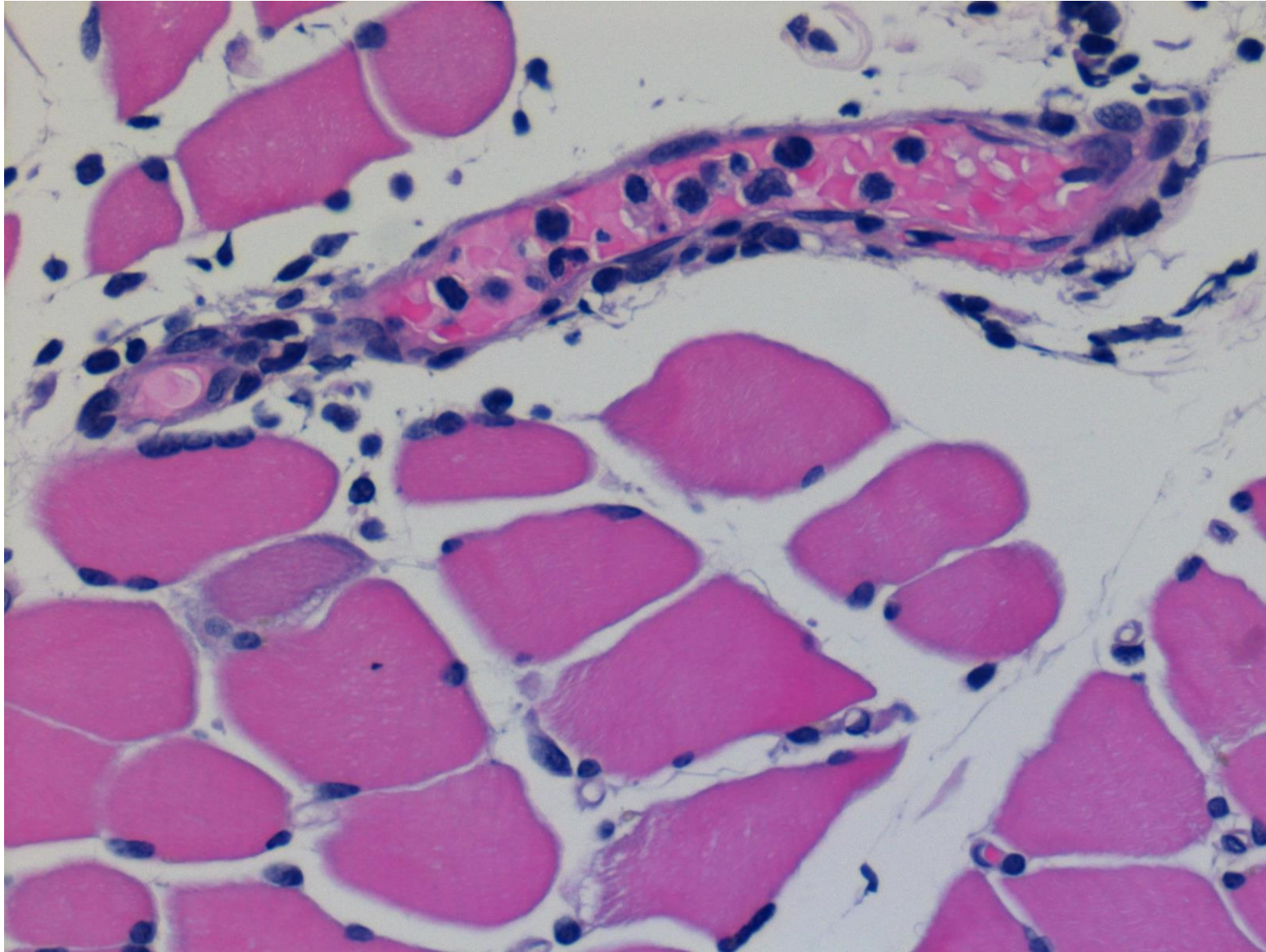


Striated muscle tissue shows a few regenerative myocytes with basophilic cytoplasm. No cytomegalic inclusion bodies are detected. H&E-4

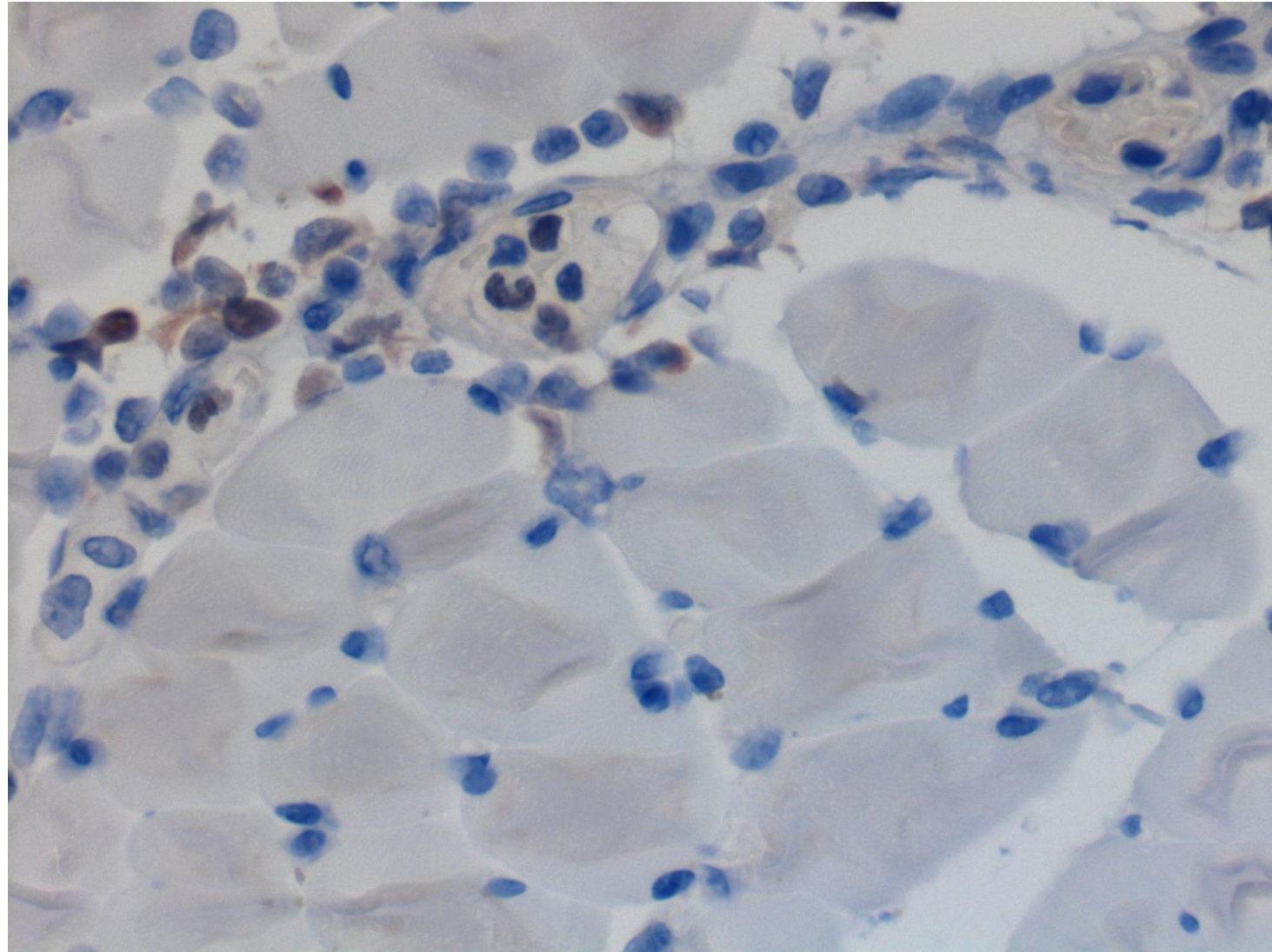


Striated muscle tissue shows a few regenerative myocytes with basophilic cytoplasm. Capillaritis with mild lymphocytic infiltration is associated. No cytomegalic inclusion bodies are detected. H&E-5



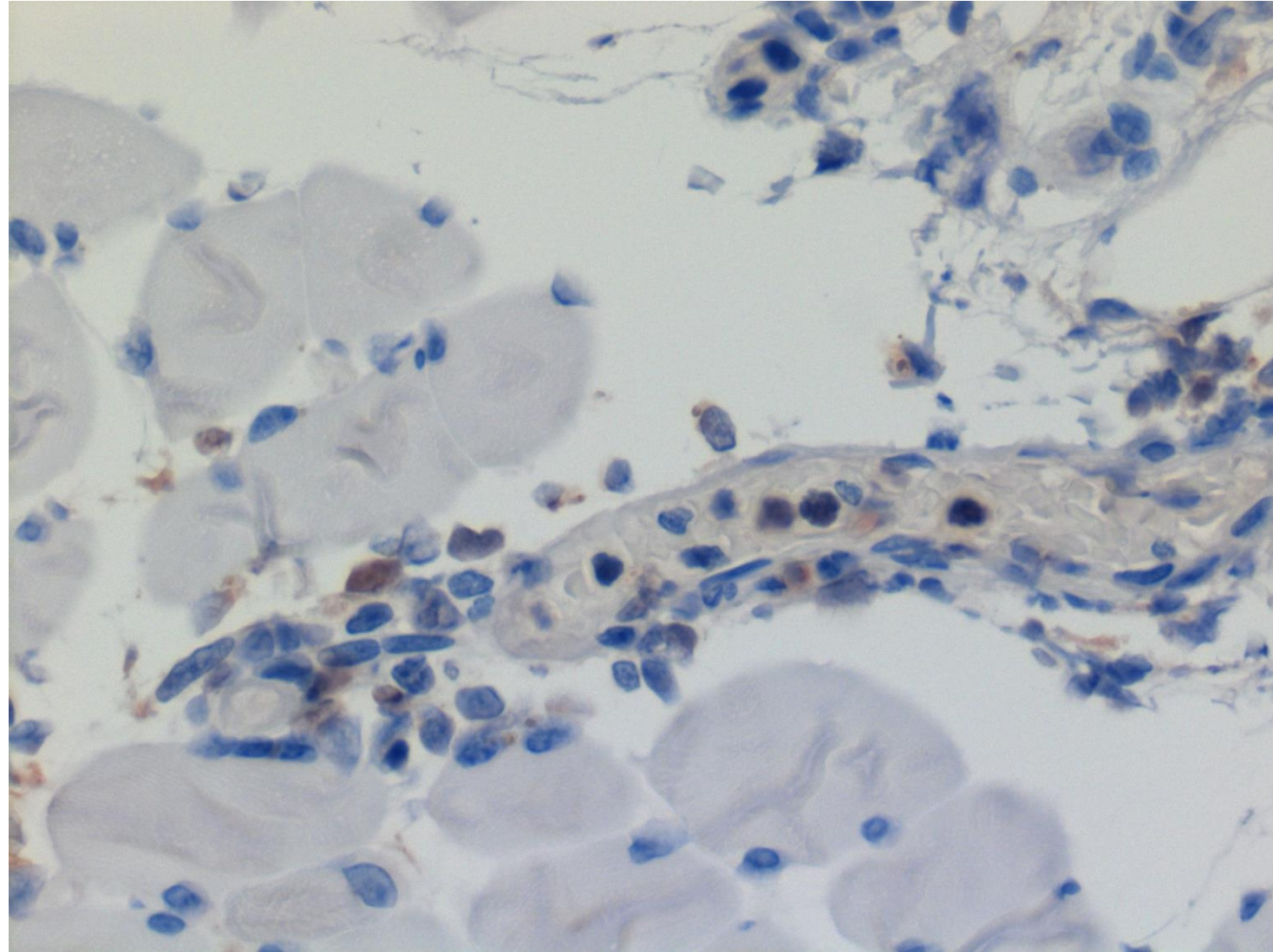


Striated muscle tissue shows a few regenerative myocytes with basophilic cytoplasm. Capillaritis with mild lymphocytic infiltration is associated. No cytomegalic inclusion bodies are detected. H&E-6

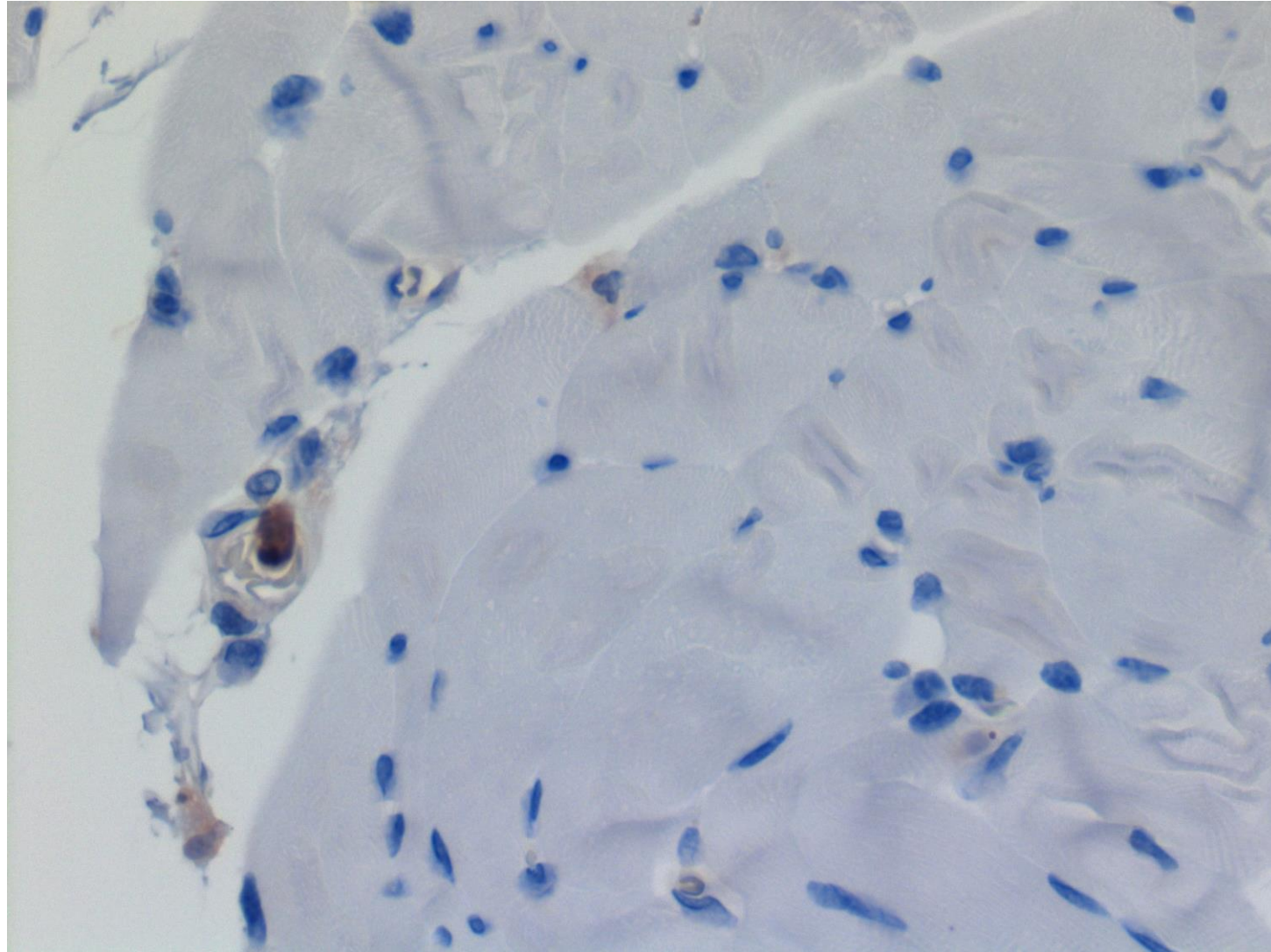


In the lesion of capillaritis with mild lymphocytic infiltration, a few nuclei of endothelial cells are positive for CMV antigen. No cytomegalic change is associated. Immunostaining for CMV-1



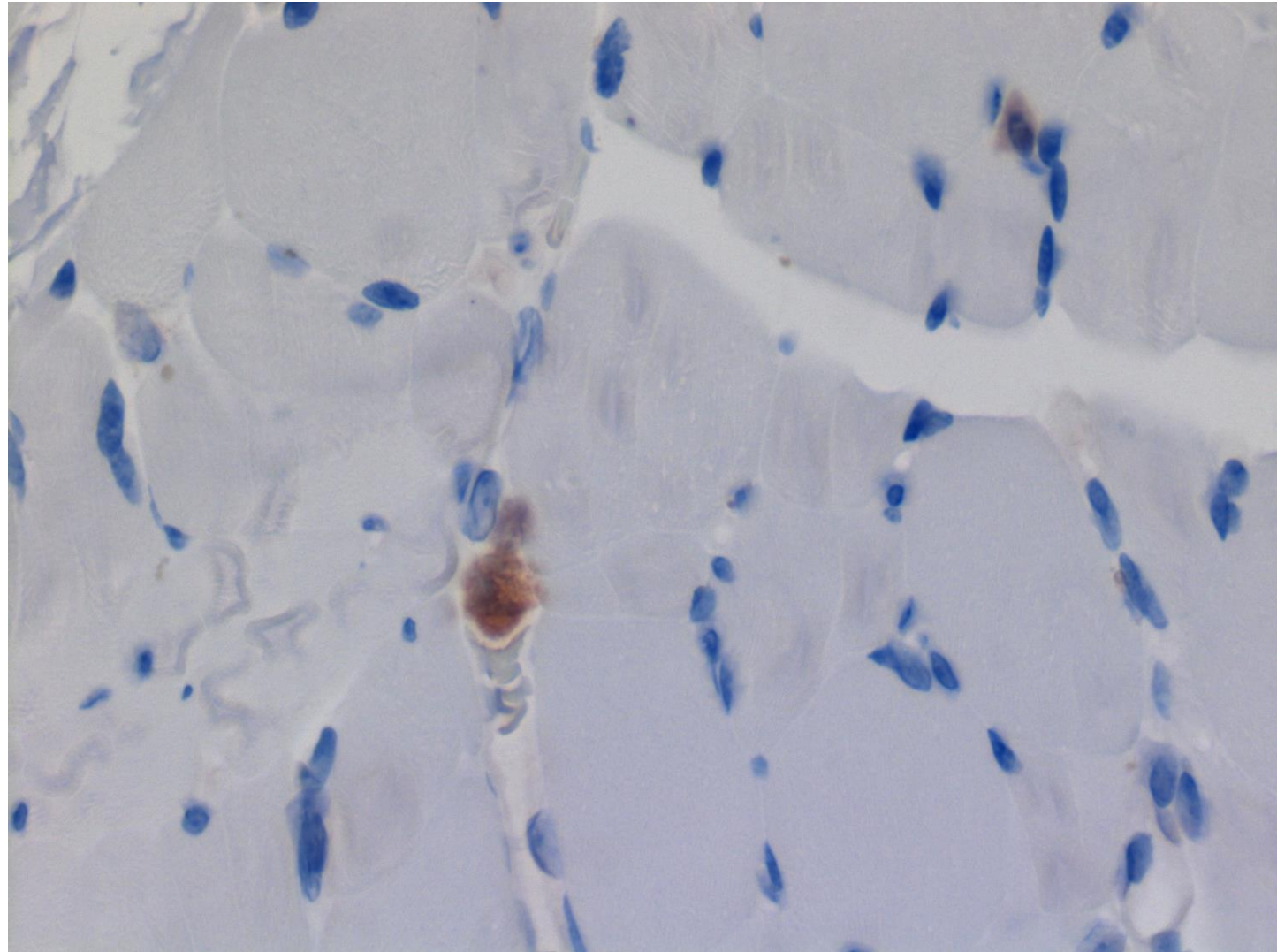


In the lesion of capillaritis with mild lymphocytic infiltration, a few nuclei of endothelial cells are positive for CMV antigen. No cytomegalic change is associated. Immunostaining for CMV-2

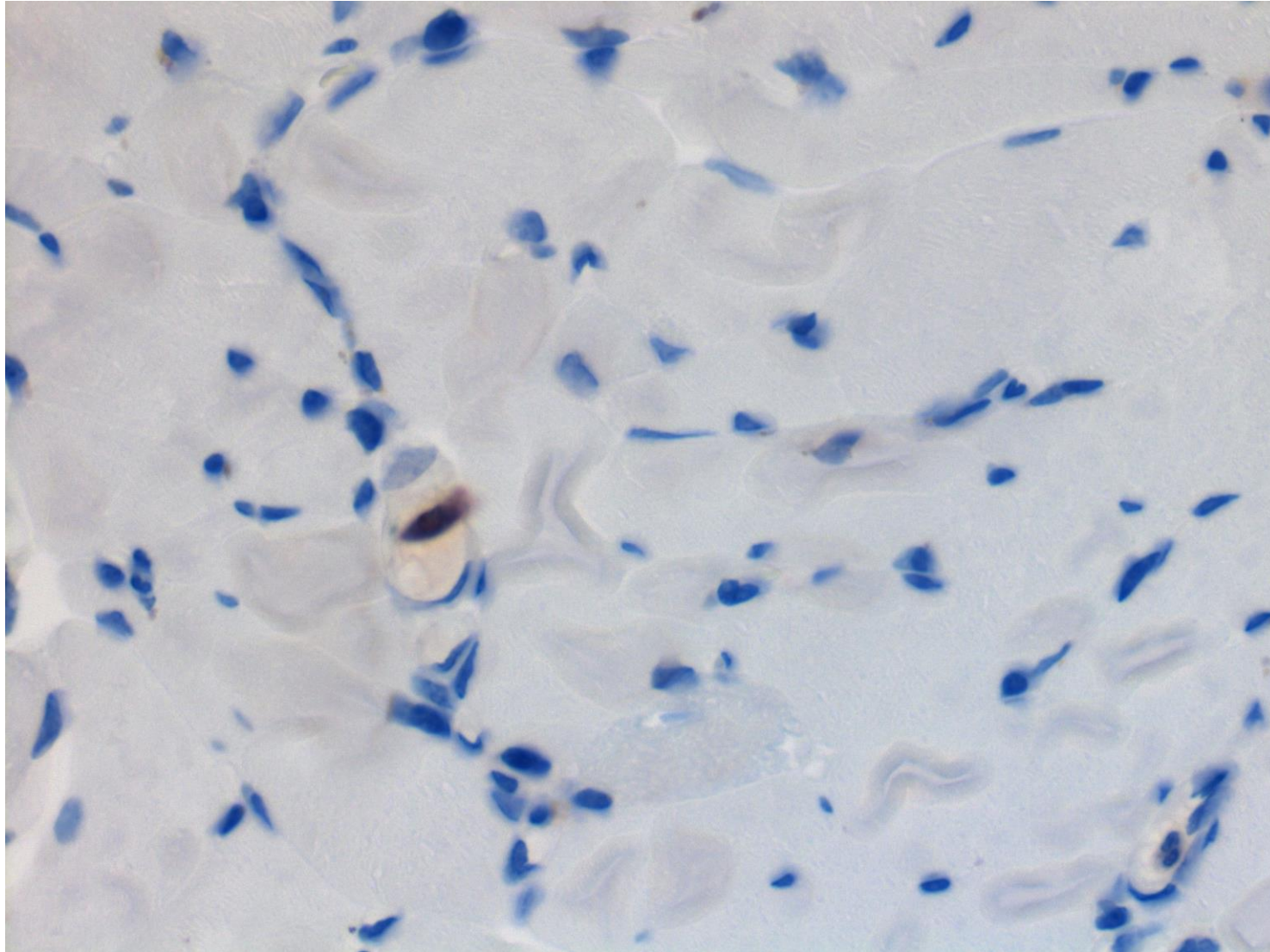


A nucleus of capillary endothelial cell is positive for CMV antigen. No cytomegalic change is associated. Immunostaining for CMV-3





A nucleus of capillary endothelial cell is positive for CMV antigen. No cytomegalic change is associated. Immunostaining for CMV-4



A nucleus of capillary endothelial cell is positive for CMV antigen. No cytomegalic change is associated. Immunostaining for CMV-5