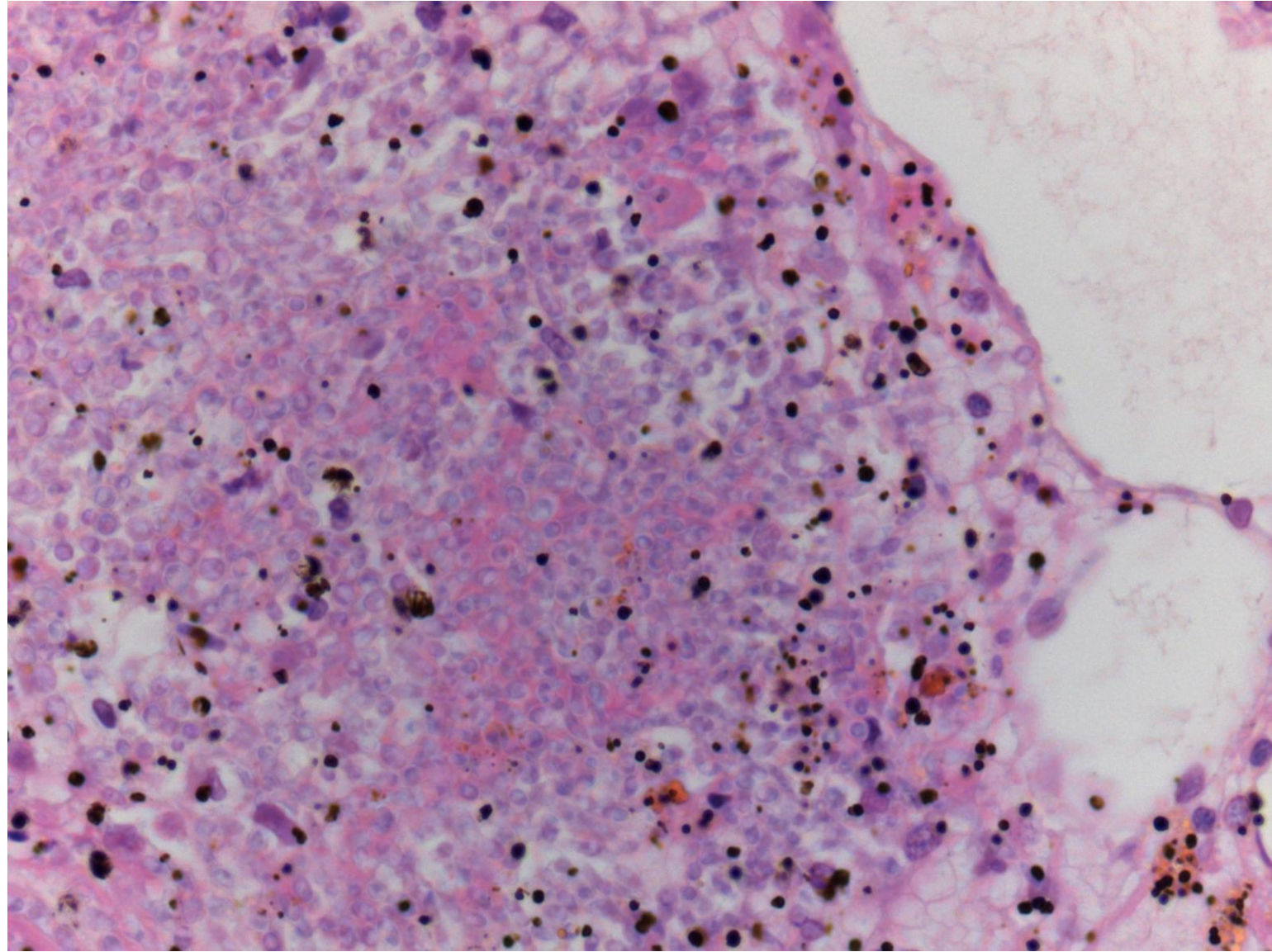


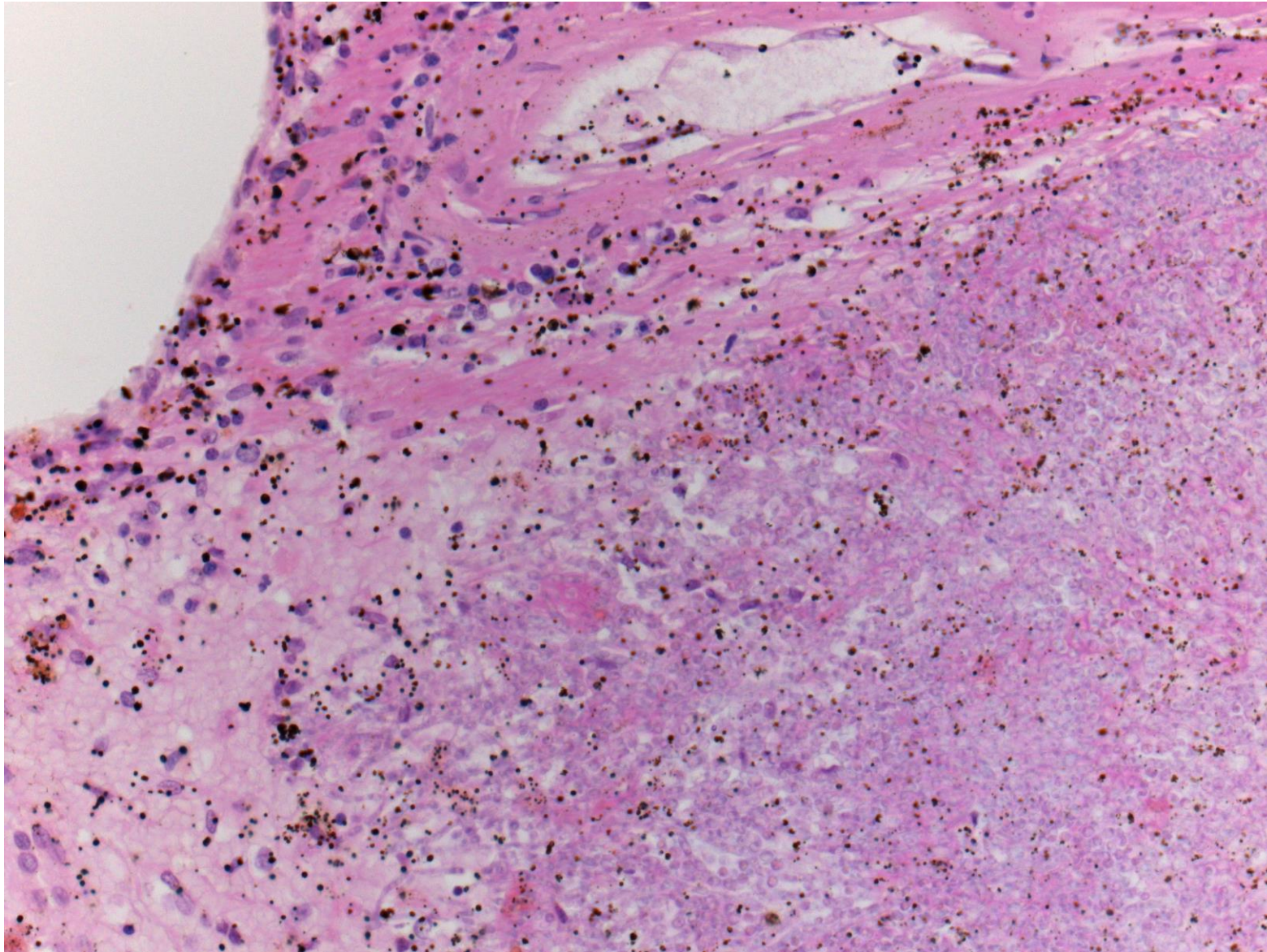
# Splenic candidosis with gas production

*Candida albicans* is part of the normal flora of the microbiota in the oral cavity and digestive tract. The various clinical manifestations of *Candida* species range from localized, superficial mucocutaneous disorders to invasive diseases. The systemic disease involves multiple organ systems, including the spleen, is associated with life-threatening candidemia.

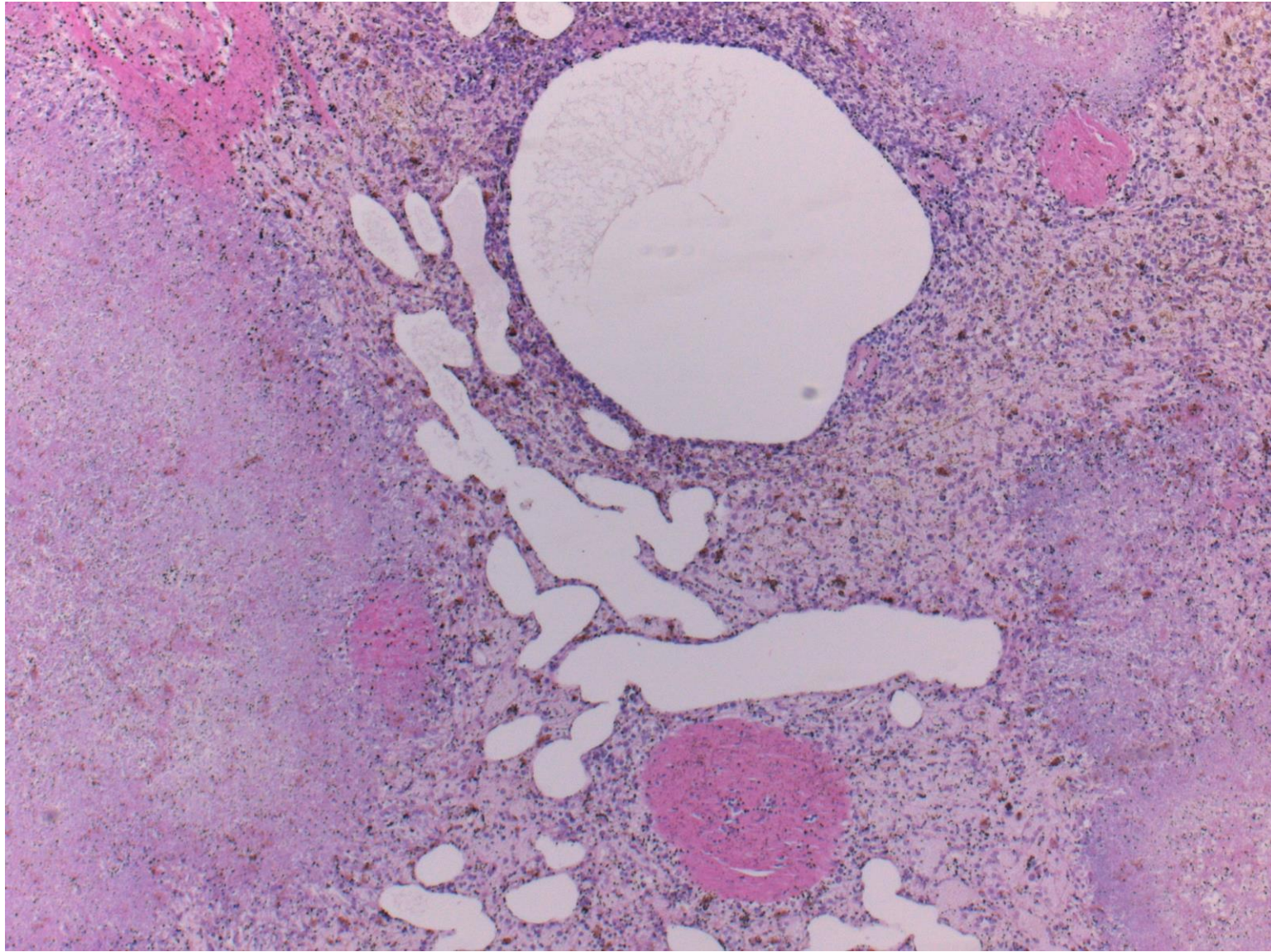
Here, splenic candidosis with gas production is presented. Note that *C. albicans* may show gas production.



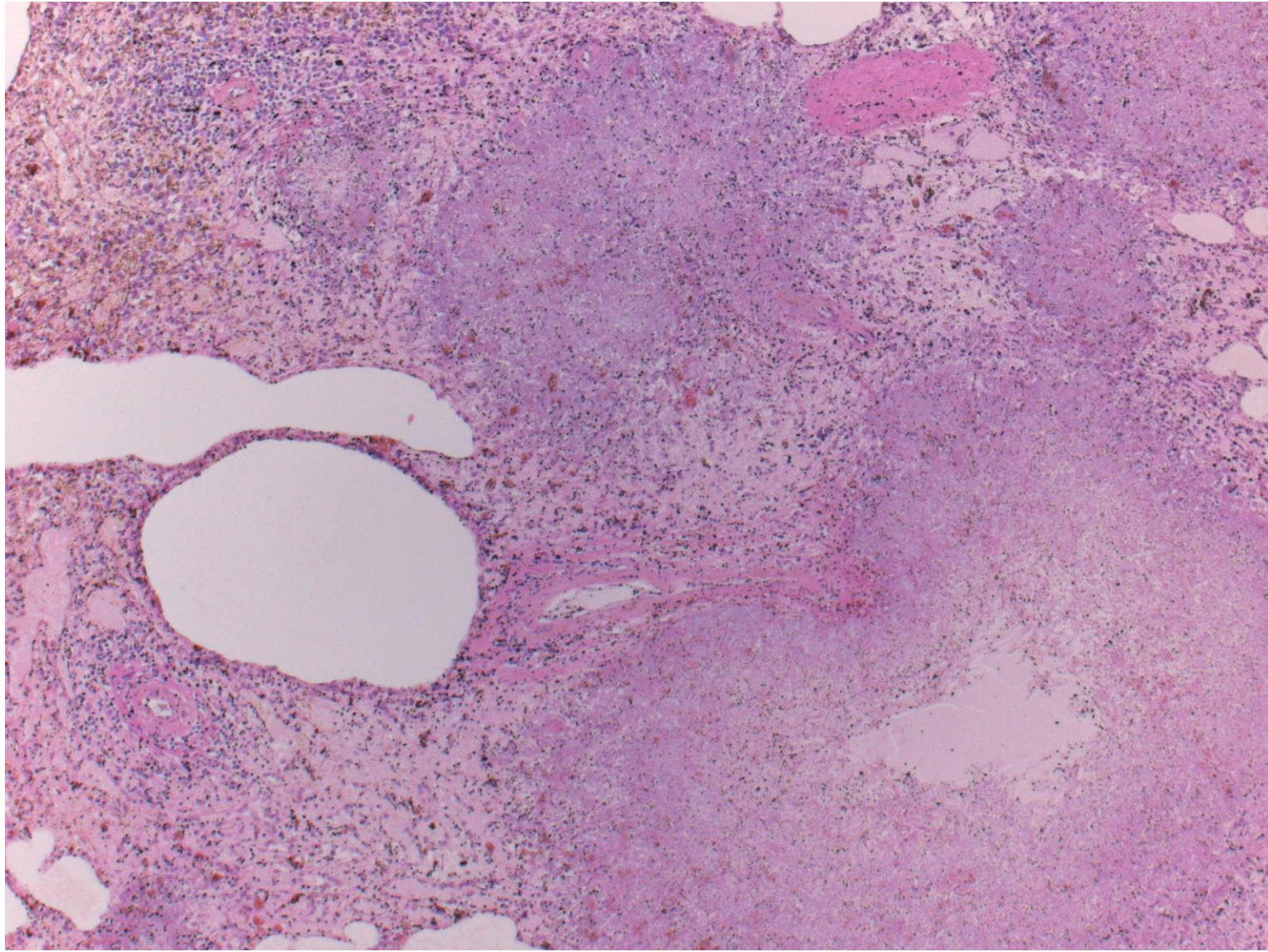
The splenic red pulp reveals colonization of *Candida albicans* consisting of yeast form fungi. Gas production is associated. H&E-1



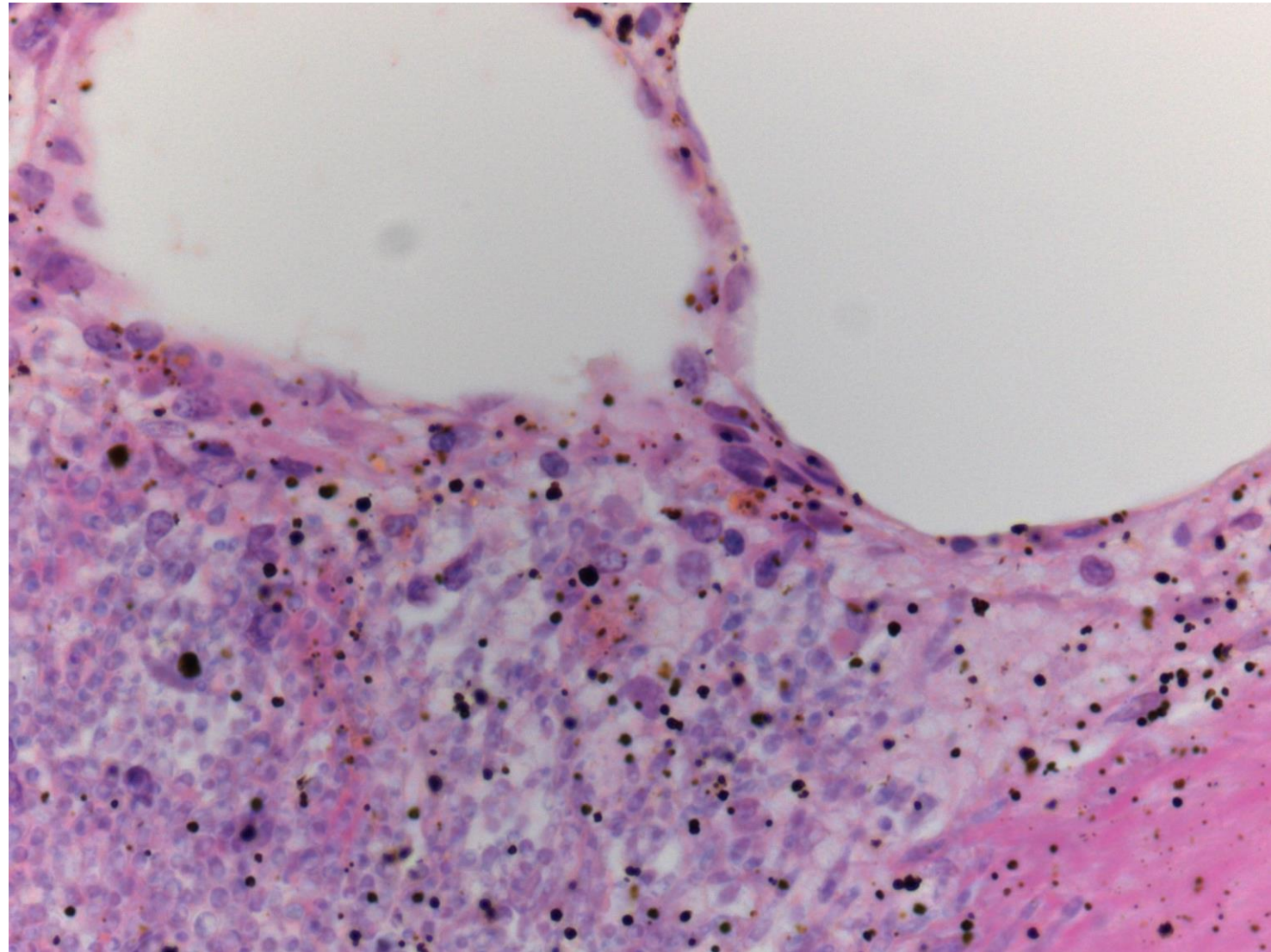
The splenic red pulp reveals colonization of *Candida albicans* consisting of yeast form fungi. Gas production is associated. H&E-2



The splenic red pulp reveals colonization of *Candida albicans* consisting of yeast form fungi. Gas production is associated. H&E-3



The splenic red pulp reveals colonization of *Candida albicans* consisting of yeast form fungi. Gas production is associated. H&E-4



The splenic red pulp reveals colonization of *Candida albicans* consisting of yeast form fungi. Gas production is associated. H&E-5