

Diseases, syndromes, lesions and methods with finder's name, A-C

Diseases, syndromes, lesions and methods with finder's name, beginning with A-C, are summarized: A = 15 disorders, B = 29 disorders and C = 30 disorders.

Representative figures are illustrated in the respective lesions.

A: 15 disorders, B: 29 disorders, C: 30 disorders

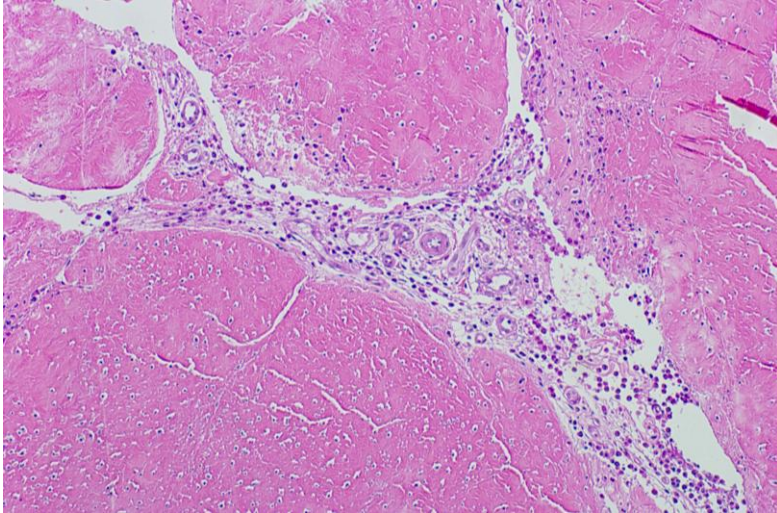
A: Achilles tendon rupture, Adams-Stokes syndrome, Addison's disease, Alagille syndrome, Alpers' disease, Alport syndrome, Alzheimer type II astrocyte, Alzheimer's disease, Anderson's disease, Anitschkow cell, Aschoff nodules, Askanazy type vasculitis, Askin's tumor, Auer body, Azzopardi effect

B: Banti syndrome, Barr body, Barrett's mucosa, Bartholin's gland cyst, Bartter syndrome, Bazin's erythema induratum (erythema induratum Bazin), Behçet disease, Bellini duct carcinoma, Bernard-Soulier syndrome, Binswanger's disease, Birbeck granule, Birt-Hoggs-Dube syndrome, Blandin-Nuhn cyst, Blaschko lines, Bochdalek-type diaphragmatic hernia, Bodian stain, Boerhaave's syndrome, Botallo's duct persistent opening, Bouin's fixative, Bowen's disease, Brenner's tumor, Brodie's abscess, Bruton type agammaglobulinemia, Brown-Sequard syndrome, Brunner's gland cyst, Budd-Chiari syndrome, Bürger's disease, Burkitt lymphoma, Buschke's scleredema adultorum

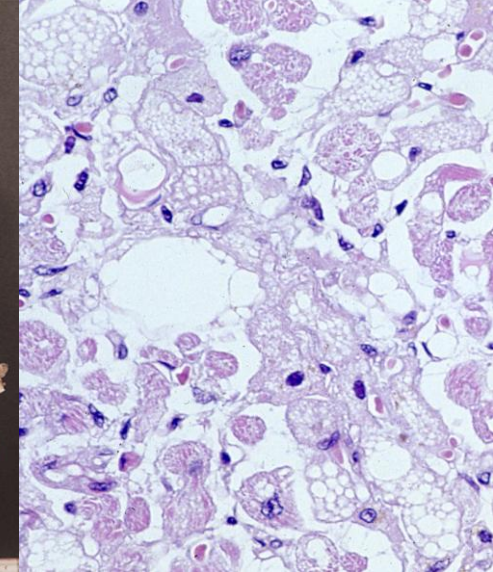
C: Caplan's nodule, Carney's complex, Carney's triad, Castleman's tumor, Celsus alopecia (kerion celsi), Chagas disease, Chanarin-Dorfman syndrome, Charcot joint, Charcot-Leiden's crystals, Charcot-Marie-Tooth disease, Chediak-Higashi syndrome, Churg-Strauss syndrome, Civatte body, Clark level, Codman's triangle, Conn's syndrome, Cooley's anemia, Cori's disease, Councilman's body, Cowden syndrome, Cowdry type A nuclear inclusion, Creutzfeldt-Jakob's disease, Crohkhite-Canada syndrome, Crohn's disease, Crooke's hyaline change, Crow-Fukase syndrome, Curling ulcer, Curschmann's spiral, Cushing's syndrome, Cushing ulcer

Achilles tendon rupture (adult patients with chronic renal failure, hyperparathyroidism or diabetes mellitus are susceptible). ConnectT-100-2-SoftT

Overstretching of the Achilles tendon causes a traumatic tear. Sports activity can provoke the rupture.



Adams-Stokes syndrome (abrupt, transient consciousness loss due to arrhythmic sudden decrease in cardiac output)



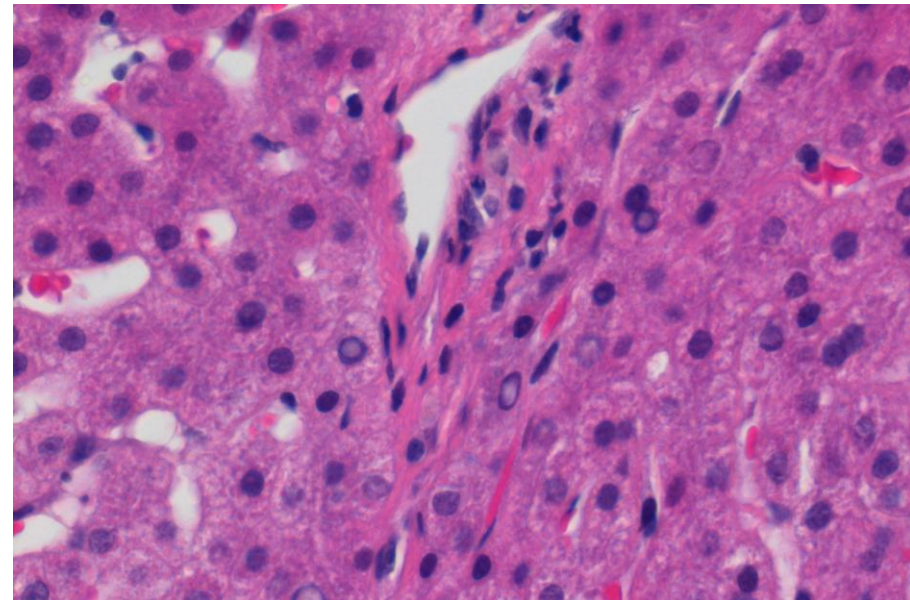
Sick sinus syndrome may result in this syndrome. SA nodal artery is a branch of right coronary artery (left), and SA nodal muscle cells are rich in glycogen (right).

Addison's disease (chronic adrenal insufficiency: adrenal tuberculosis). Endo-75-Adrenal

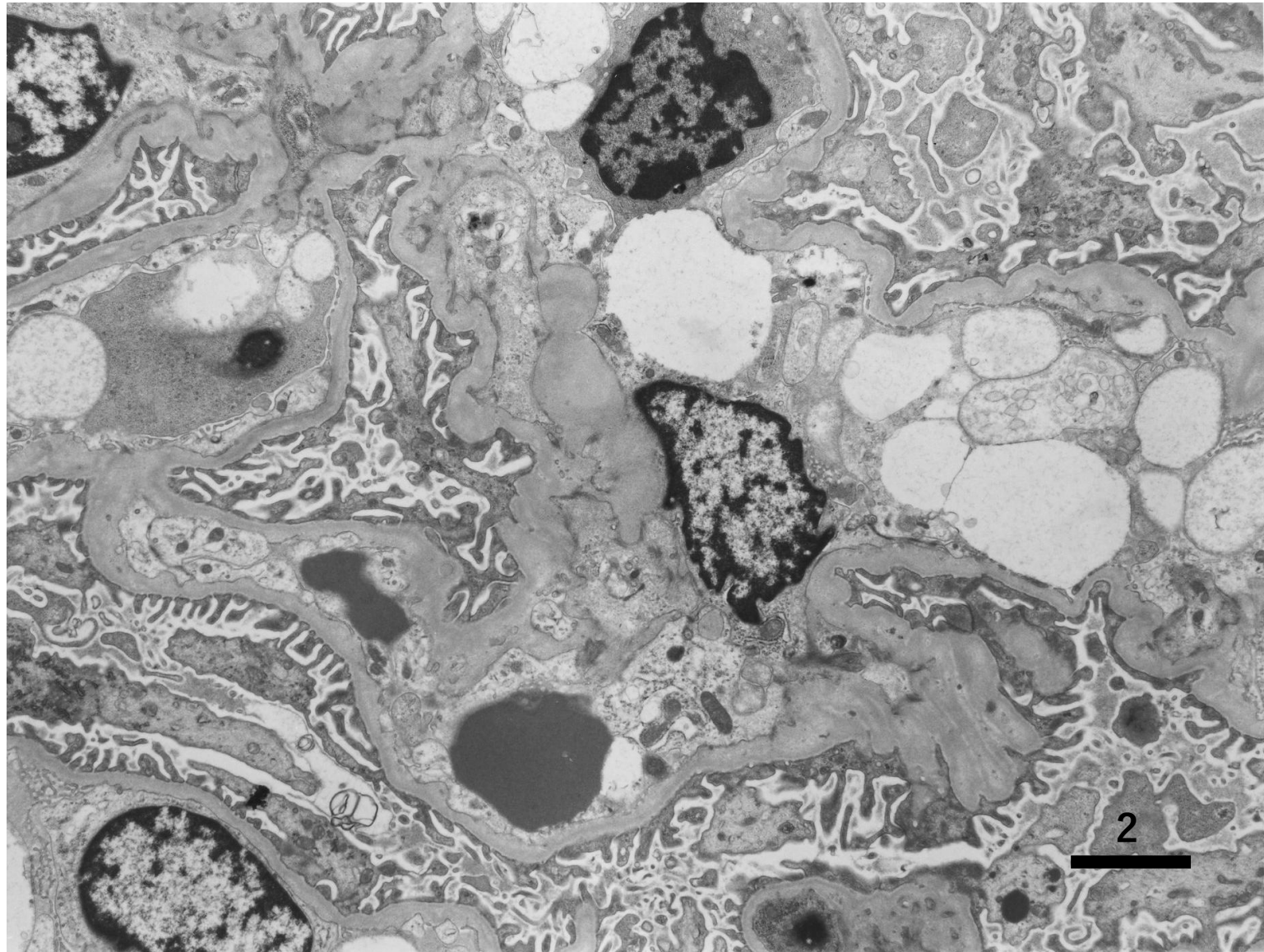


Encapsulated caseous foci seen multifocally in the adrenal gland.

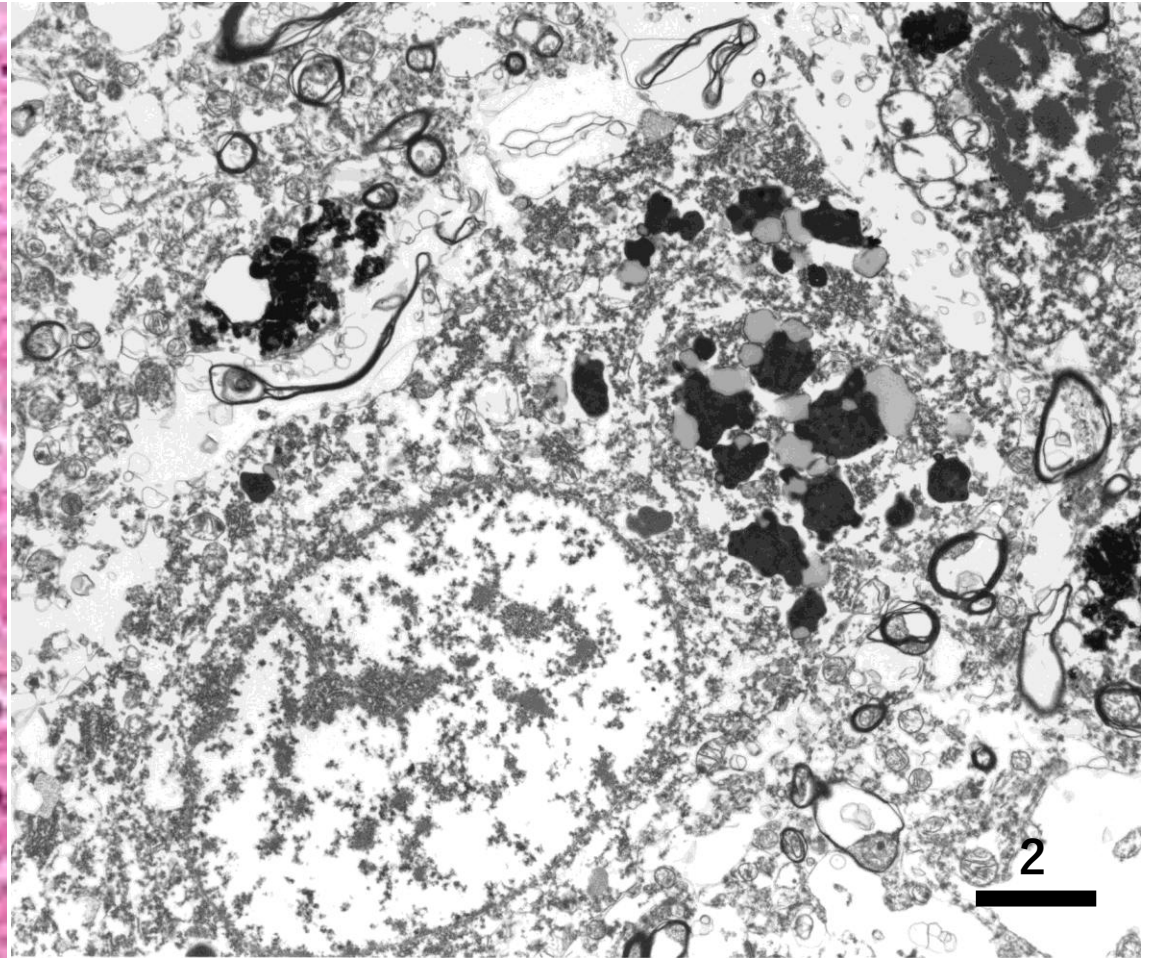
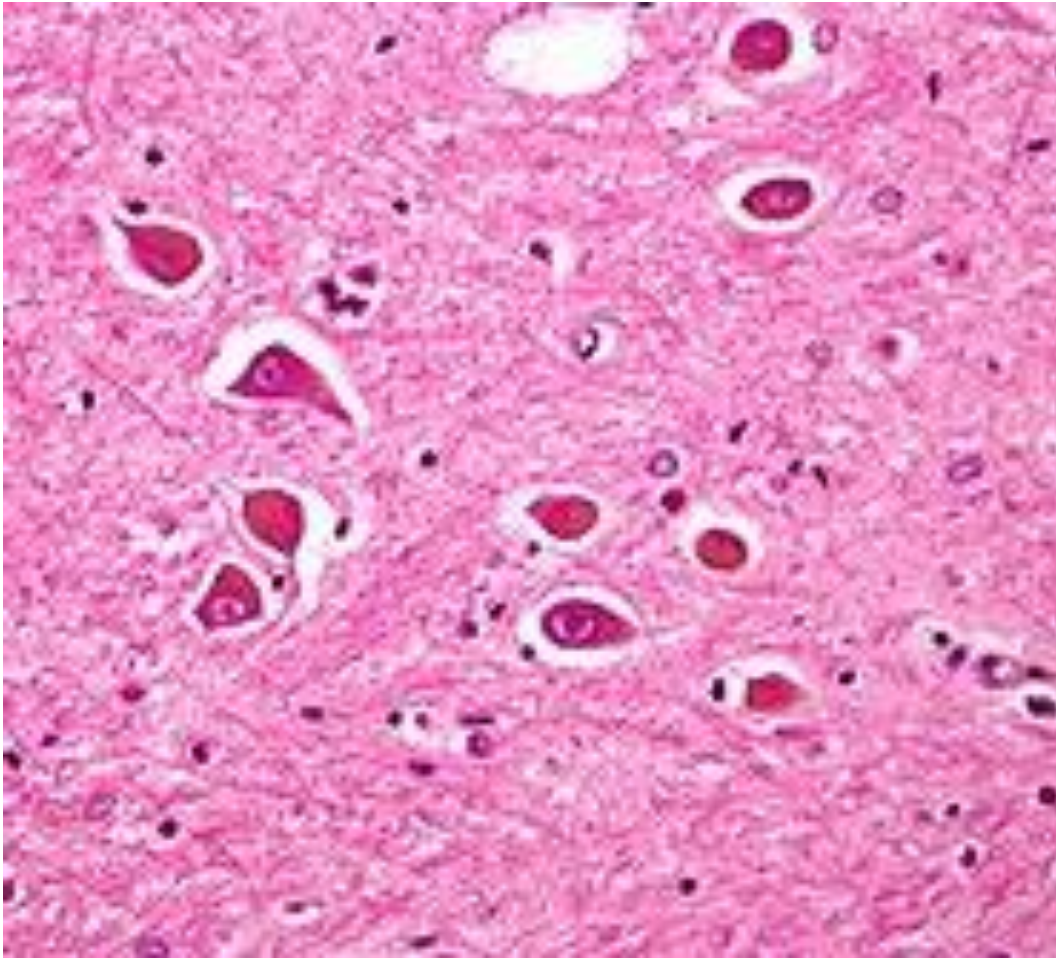
Alagille syndrome (congenital cholestasis disorder). HBP-98-liver.



The portal triad lacks bile ducts.



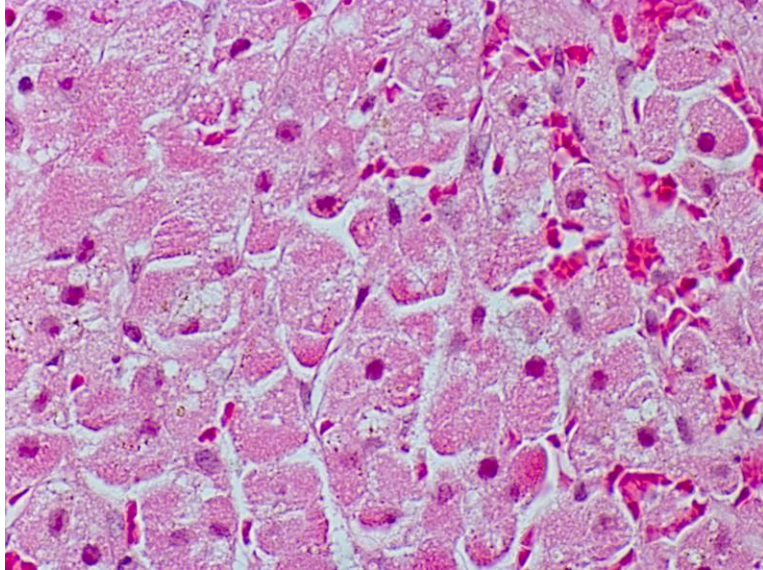
Alport syndrome (thin basement membrane disease) seen in a 9 y-o boy with microscopic hematuria. Ultrastructurally, the glomerular basement membrane is thin. See Uro-17-kidney and Uro-29-1-kidney.



Alzheimer type II gliia are reactive astrocytes with enlarged pale nuclei with one or two sharply demarcated PAS-positive bodies adjacent to the nuclear membrane (left: H&E). They are often seen in deep gray matter nuclei (basal ganglia). Ultrastructurally, electron-dense irregular-shaped granules and fat droplets are clustered in lysosomes. The round nucleus reveals inconspicuous chromatin (right). The reactive astrocytes, unrelated to Alzheimer disease, may be seen in Wilson disease and hepatic encephalopathy. See neuro-3-brain

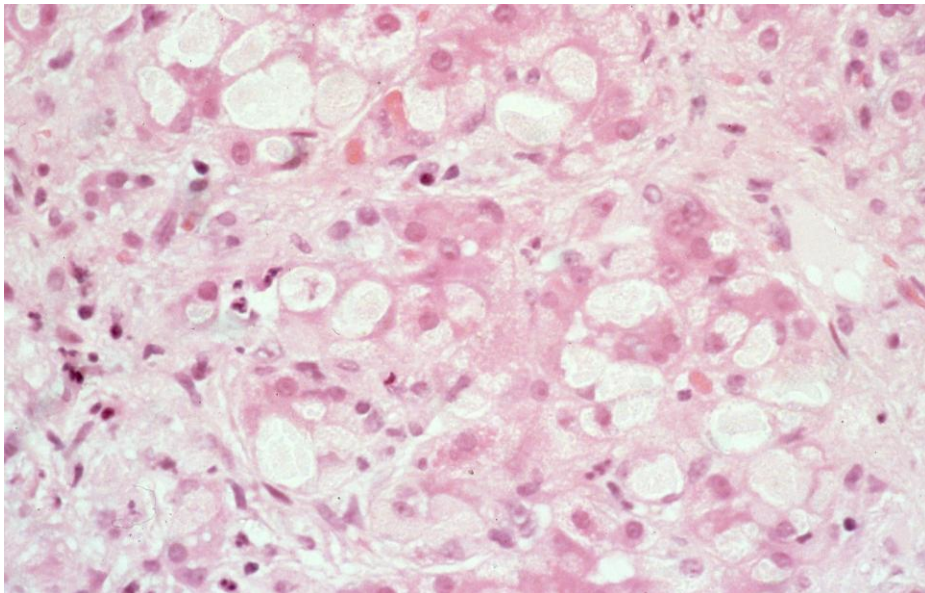
Alpers' disease (mutations in mitochondrial DNA polymerase gamma, microvesicular steatosis and hepatocellular apoptosis).

HBP-104-liver



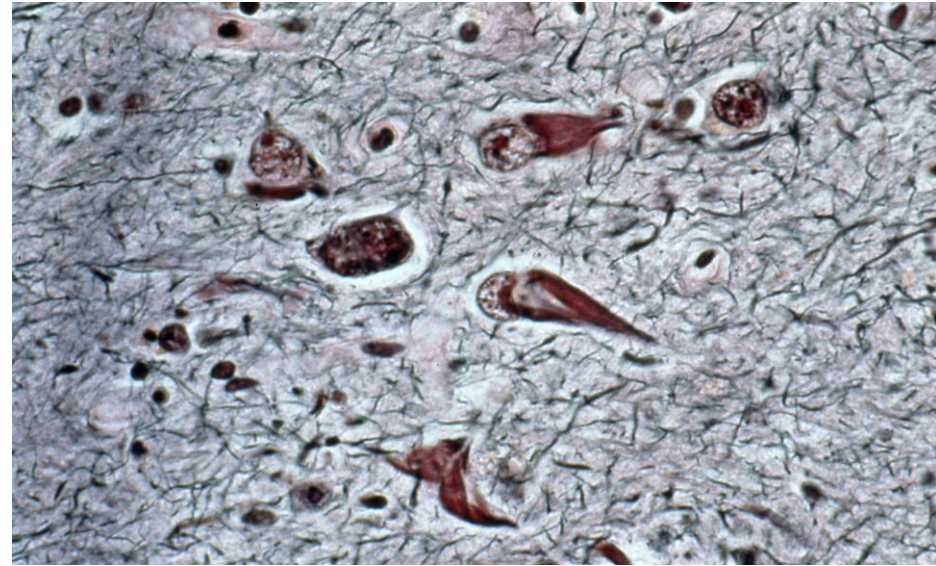
The hepatocytes show microvesicular steatosis, accompanying rapidly progressive liver failure in early childhood.

Anderson's disease (glycogen storage disease, type 4), HBP-99-1-liver



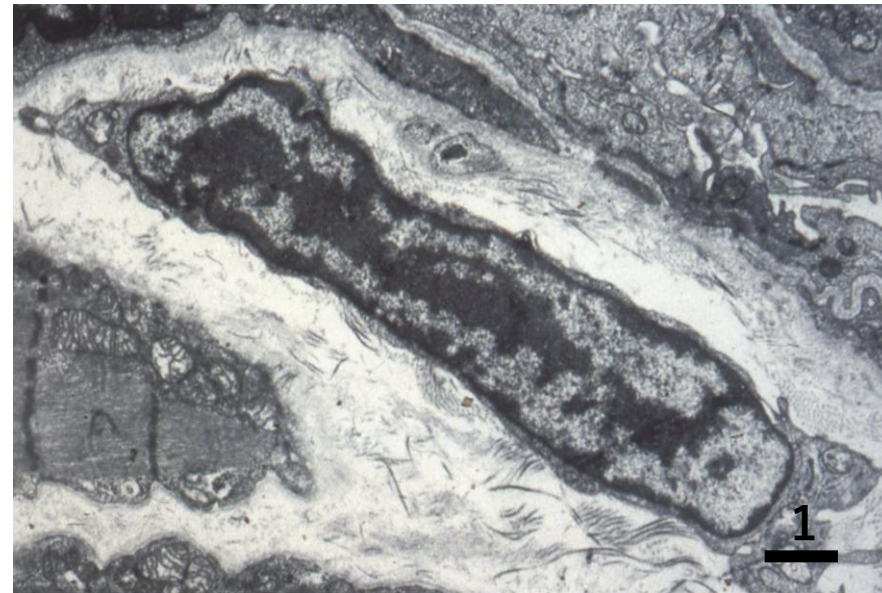
marked accumulation of glycogen in the cytoplasm of the hepatocytes.

Alzheimer's disease (neurofibrillary tangles representing tauopathy, Bodian stain). neuro-11-1-brain through neuro-11-6-brain



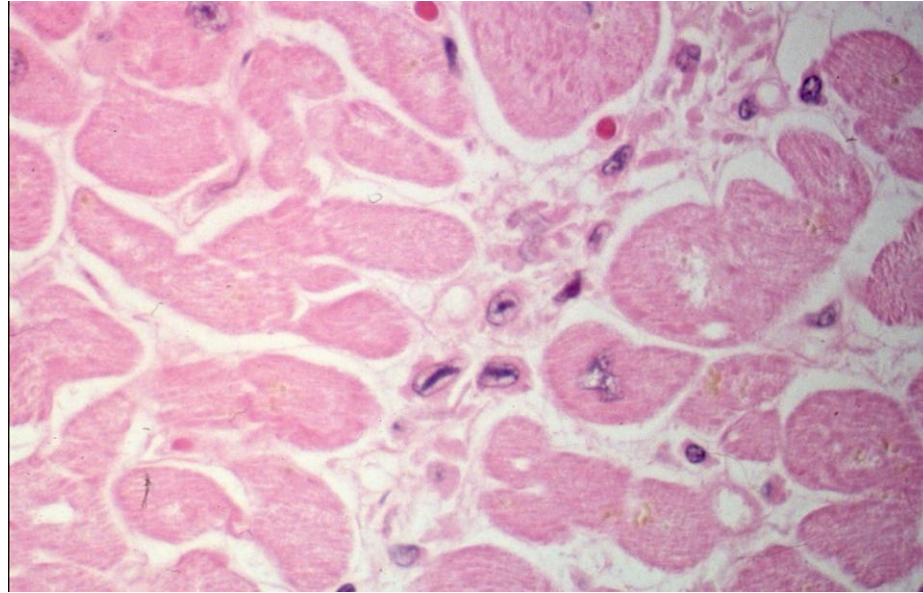
Neurofibrillary tangles are visualized with Bodian's silver stain.

Anitschkow cell (caterpillar cell: an enlarged macrophage found in Aschoff's nodules in rheumatic heart)



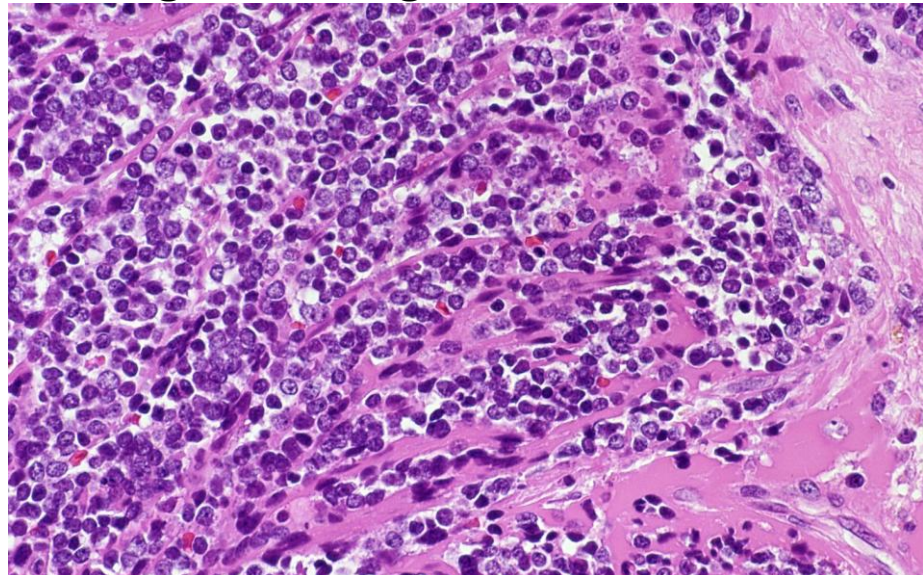
Ultrastructure of Anitschkow cell (caterpillar cell) in the rheumatic heart

Aschoff nodule with caterpillar cells (in rheumatic fever). Vascular-25-1-heart and Vascular-25-1-heart



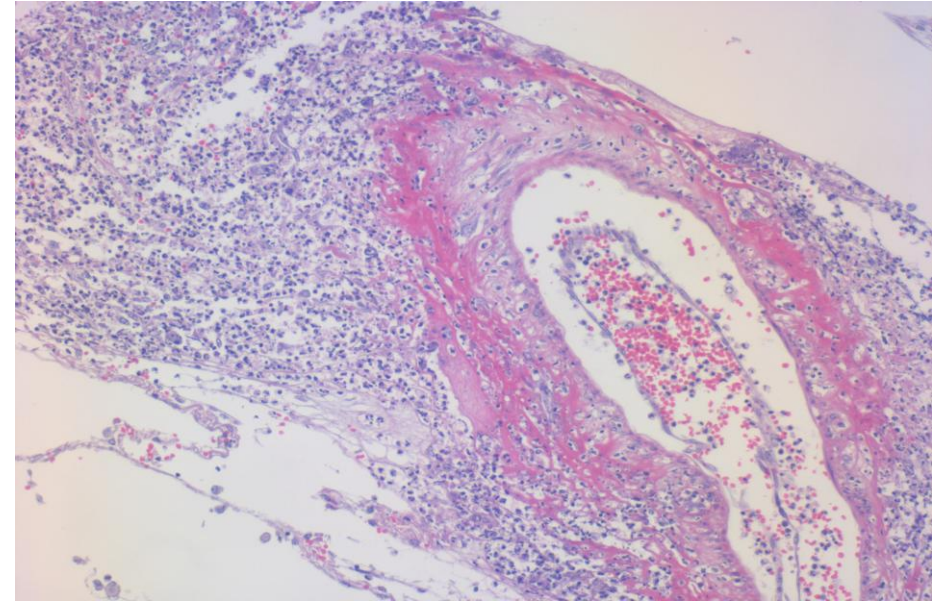
epithelioid macrophages with caterpillar nuclei (Anitschkow cell) clustered in the matrix of the heart.

Askin's tumor (Ewing sarcoma/PNET of the lung and thorax). Lung-201-malignantT



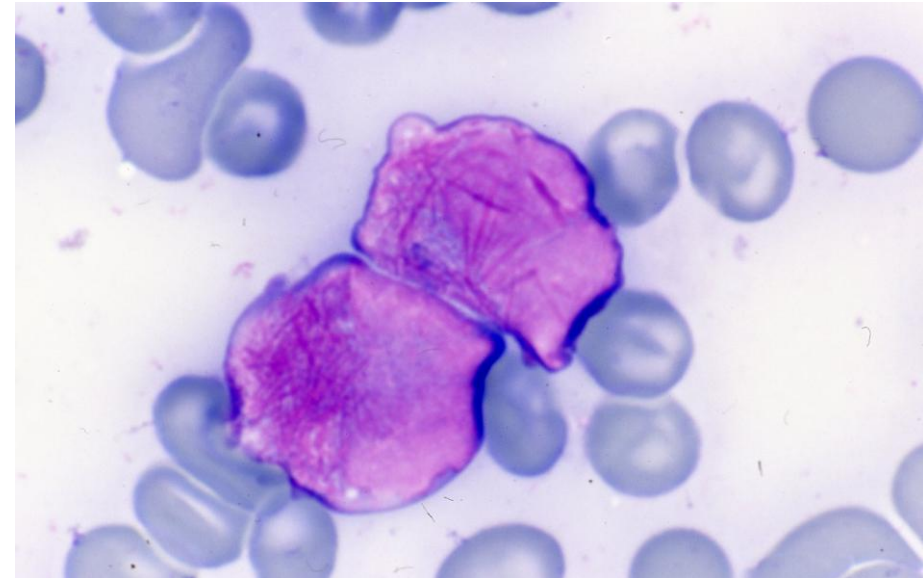
Askin's tumor is the old term of extraosseous Ewing sarcoma of the lung.

Askanazy type vasculitis in tuberculous meningitis neuro-143-2-meninges



necrotizing angiitis, in association with tuberculous meningitis. Numerous acid-fast bacilli are proven.

Auer body (rod-like inclusions in AML, particularly in M3). Hemato-66-6-1-BM

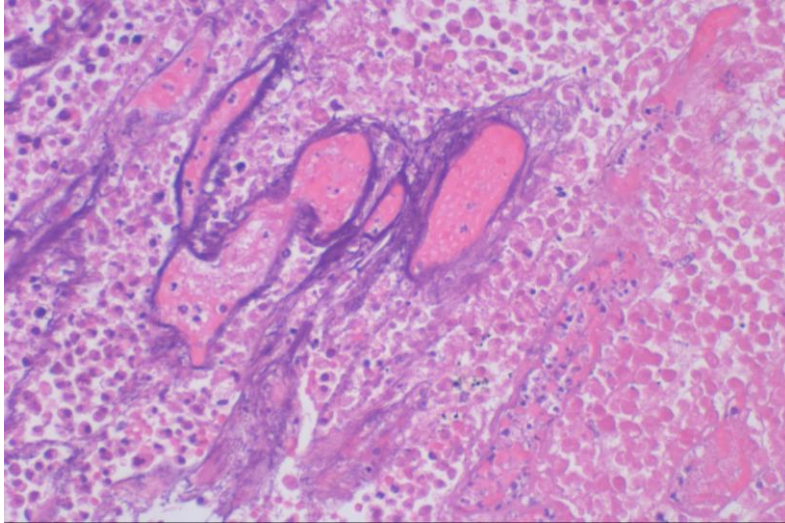


Rod-shaped Auer bodies are the hallmark of acute myeloid leukemia. M3 often shows numerous Auer bodies.

Azzopardi effect (basophilic DNA deposits on the vessel wall after chemotherapy to lung cancer)

Lung-174-malignantT

Azzopardi effect represents the DNA deposition along the vessels after chemotherapy against highly proliferative cancer.



Banti syndrome (idiopathic portal hypertension) (round-shaped portal fibrosis without cirrhosis). **HBP-109-1-liver**



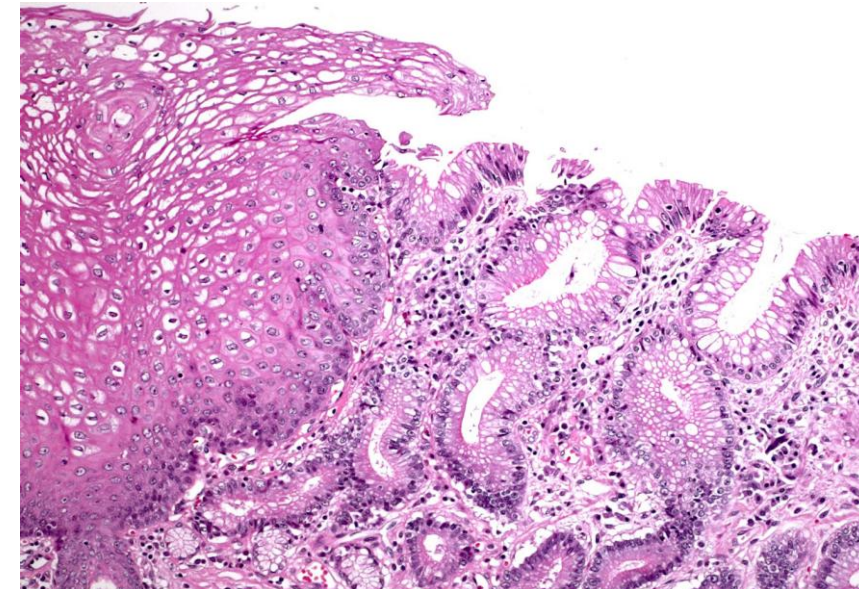
Idiopathic portal hypertension with splenomegaly is caused by obstruction of portal, hepatic and splenic veins.

Barr body (two Barr bodies seen in the oral squamous cell nucleus in Klinefelter syndrome (48XXY). **cyto-87-oral**

inactive X chromosome located at the periphery of the nucleus of females (46XX). In this case of 48XXY, two Barr bodies can be seen (arrows).



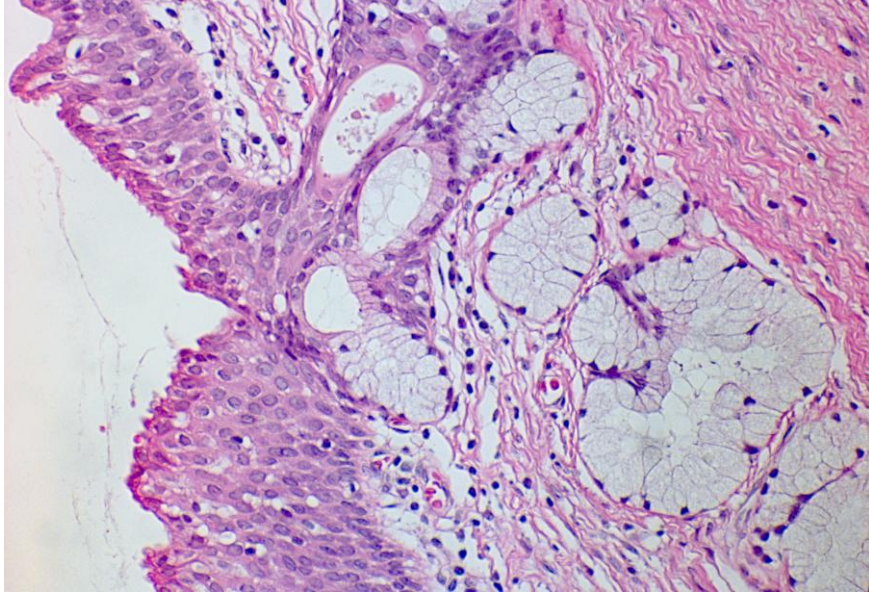
Barrett's mucosa (gastric metaplasia of the esophagus with intestinal metaplasia). **GI-7-eso and GI-8-eso**



The esophageal squamous mucosa is partly replaced by gastric-type mucosa.

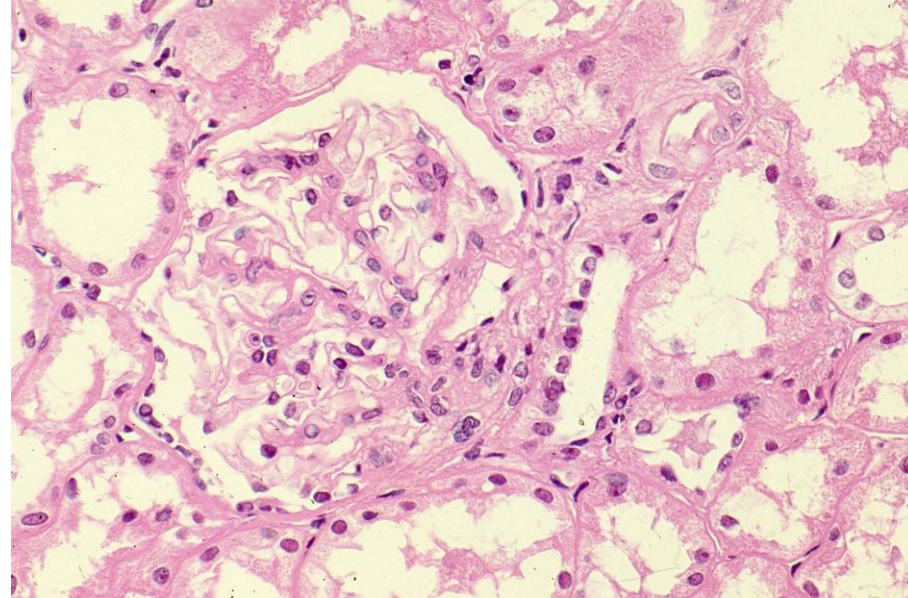
Bartholin's gland cyst: Mucous glands seen in the cyst wall. Gyne-2-vulva

Mucin-secreting Bartholin glands are situated bilaterally at the posterior portion of the vaginal opening.



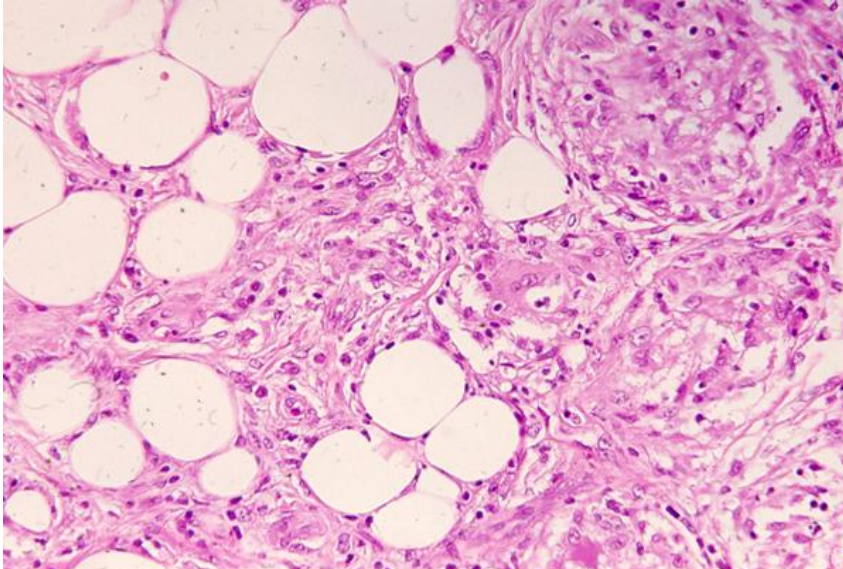
Bartter syndrome: hyperplasia of the juxtaglomerular apparatus seen in pseudo-Bartter syndrome. Uro-55-kidney

Renin-producing JGA is hyperplastic in pseudo-Bartter syndrome.



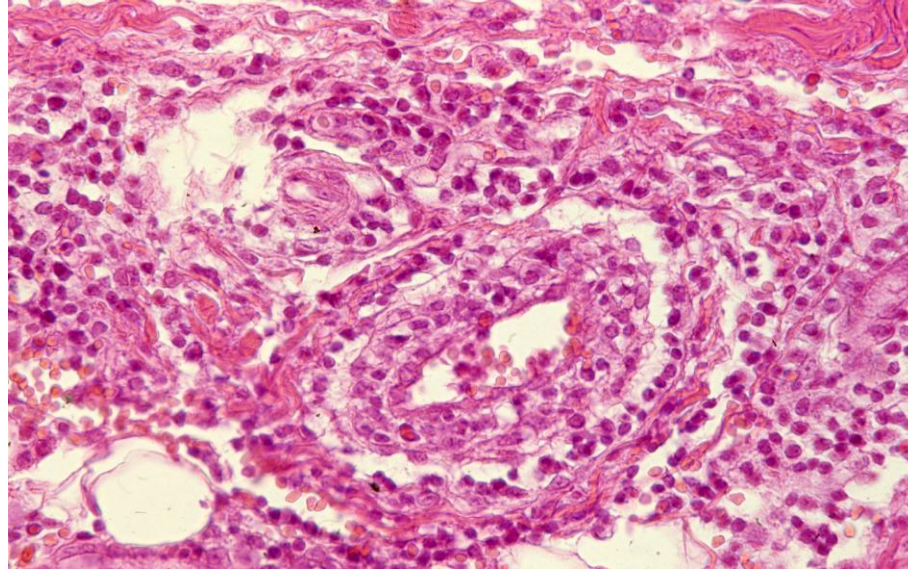
Bazin's erythema induratum (erythema induratum Bazin)
Chronic granulomatous panniculitis on both calves. Sk-79-Granul

Granulomatous reaction seen in the subcutaneous fat tissue of the calves. It may be related to tuberculosis.



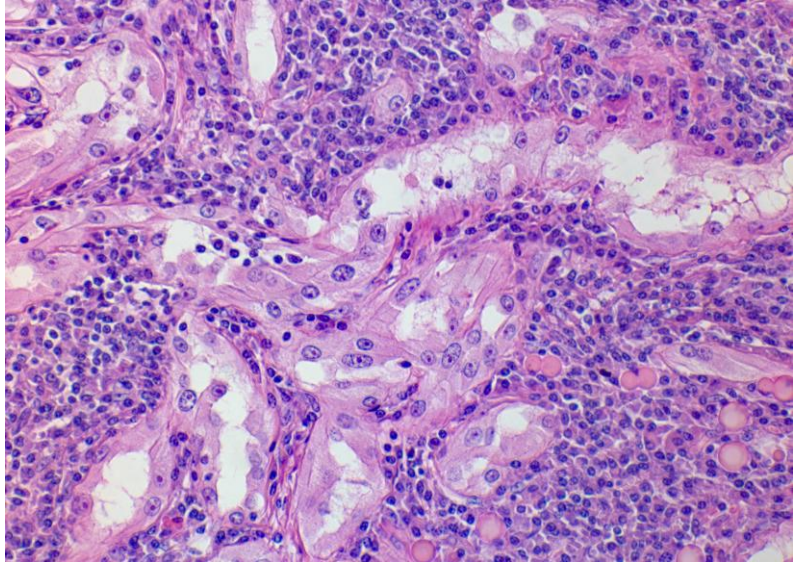
Behçet disease (scrotal ulcer with vasculitis)
Sk-105-Vascul and Sk-106-Vascul

Vasculitis of the small vessels provokes ulceration of the mucosa and skin.



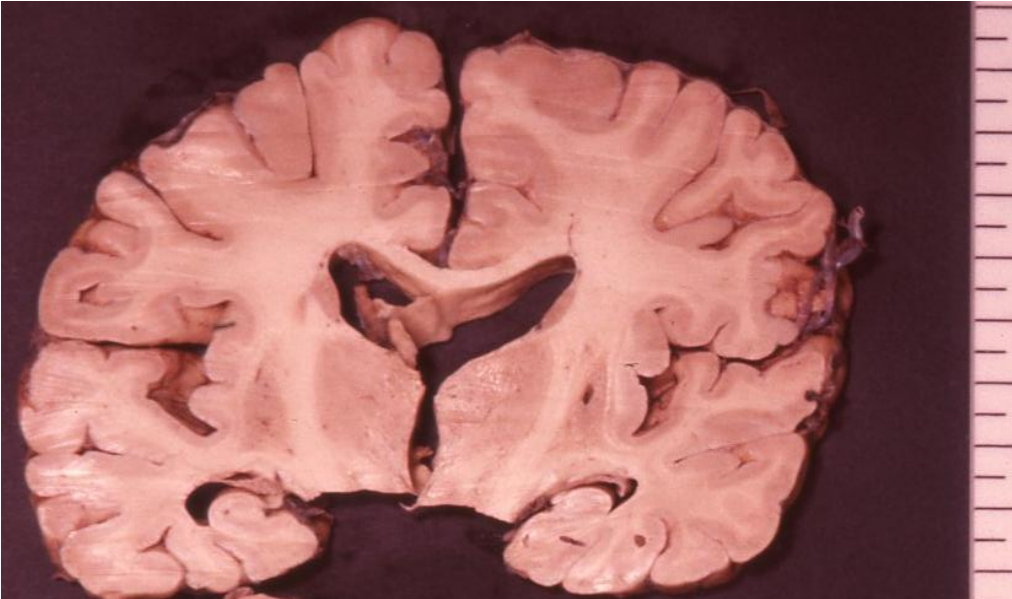
Bellini duct carcinoma (collecting duct carcinoma in the renal medulla). Uro-101-kidney

A rare aggressive subtype of kidney cancer with differentiation toward collecting ducts.



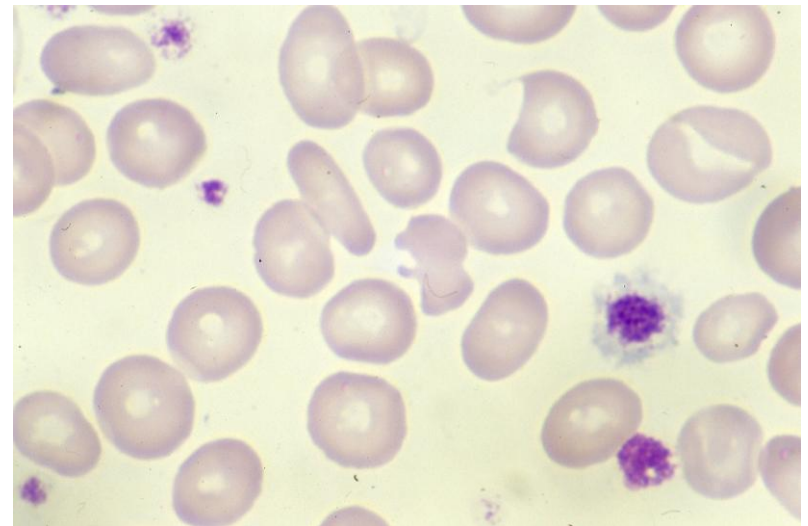
Binswanger's disease (vascular dementia): subcortical small infarctions seen. neuro-13-brain

Multifocal small infarction of the white matter provokes vascular dementia.

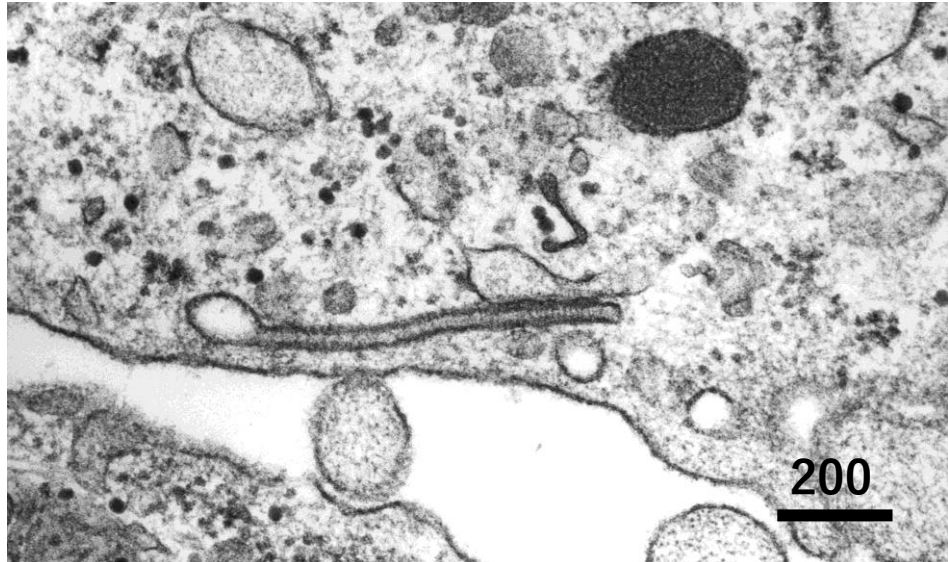


Bernard-Soulier syndrome: an autosomal recessive disorder with prolonged bleeding time, large platelets and thrombocytopenia. The peripheral blood contains large platelets. Hemato-46-3-BM

Large-sized platelets are observed on the peripheral blood smear.



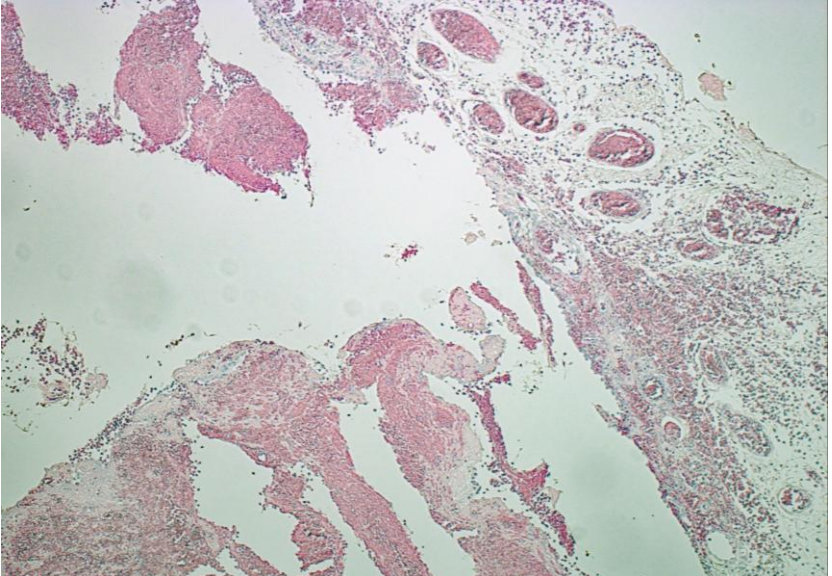
Birbeck granule (a hallmark of Langerhans cell). ConnectT-47-bone, ConnectT-179-b-SoftT, Sk-520-LPD through Sk-522-2-LPD, Lung-152-1-benignT, Lung-152-2-benignT



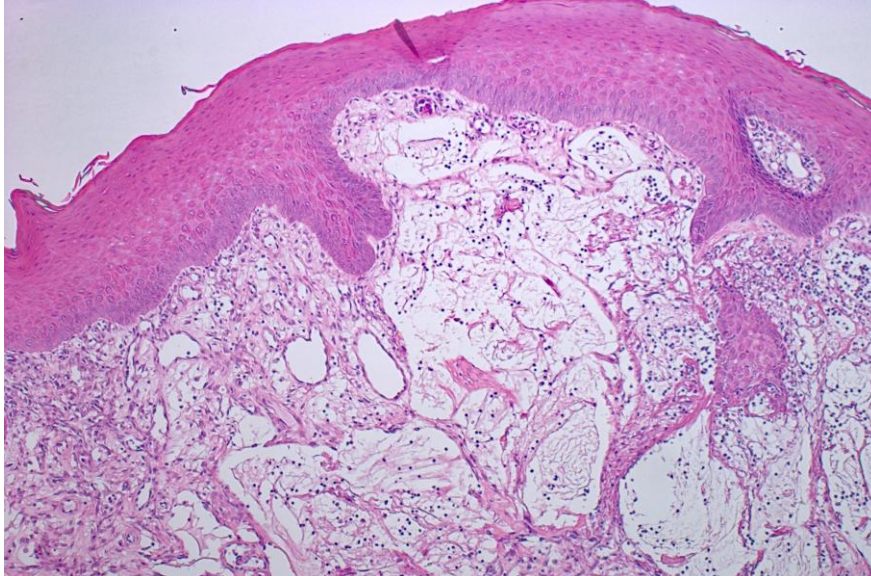
Birbeck granules are "tennis-racket" cytoplasmic organelles ultrastructurally found in Langerhans cells and their tumors.

Birt-Hoggs-Dube syndrome: hereditary but adult-onset basal bullae causing repeated pneumothorax. **Lung-26-bulla**

Pulmonary bullae may cause repeated pneumothorax. Facial fibrofolliculomas, renal oncocytoma or chromophobe renal cell carcinoma are often associated.



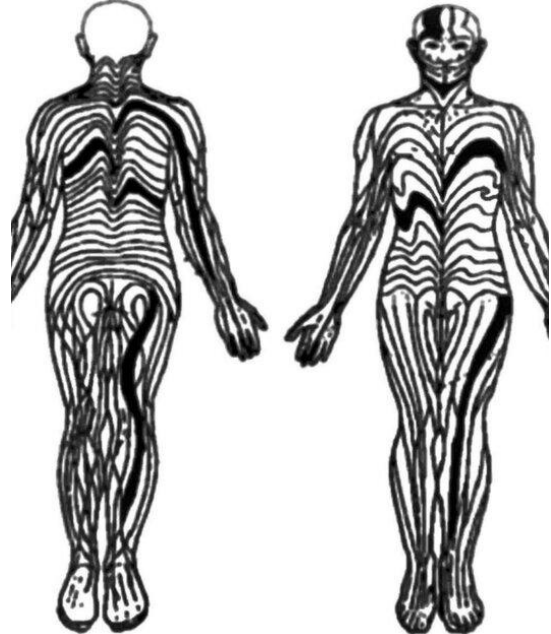
Blandin-Nuhn cyst: a mucous cyst of the tongue minor salivary gland. HN-81-OC



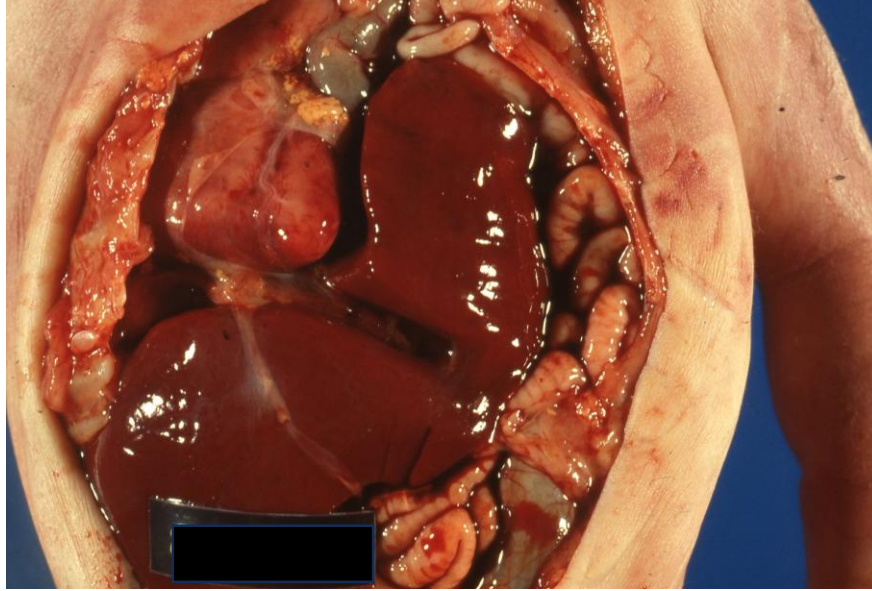
Mucocele of the mucinous minor salivary gland of the tongue is called Blandin-Nuhn cyst.

Blaschko lines (pattern of skin markings like a zebra)

Blaschko lines are lines of normal cell development in the human skin (the trace of migration of cloned embryonic cells), not corresponding to underlying nervous, muscular or lymphatic systems. These lines may express different amounts of melanin in chimera persons. They form whorls, patches, streaks or lines in a linear or segmental distribution, and follow a V-shape over the back, S-shaped whirls over the chest and sides, and wavy shapes on the head.



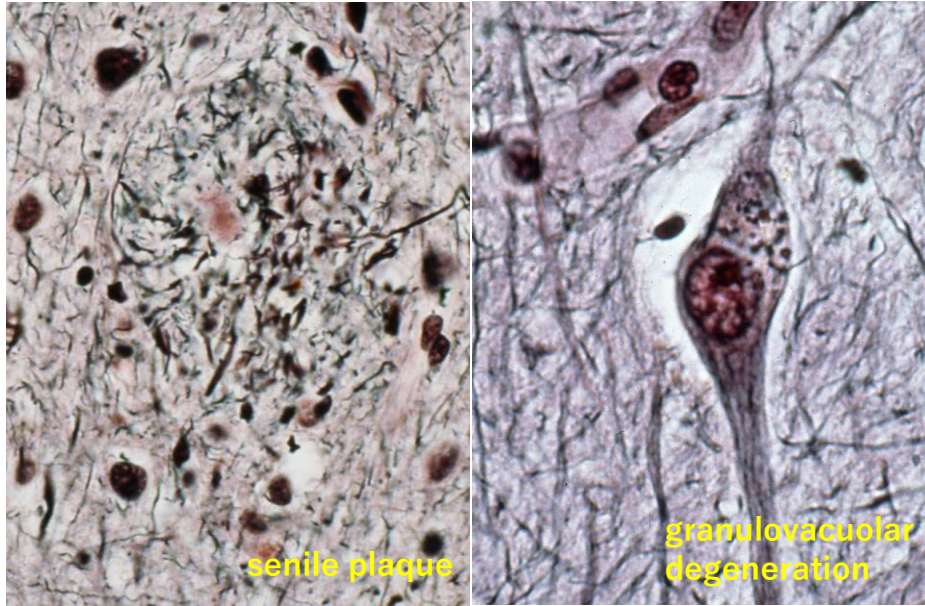
Bochdalek hernia: lethal diaphragmatic hernia seen in the left pleural cavity of a newborn girl. GI-9-2-eso



autopsy findings of Bochdalek hernia, with massive herniation of the abdominal organs into the left thoracic cavity

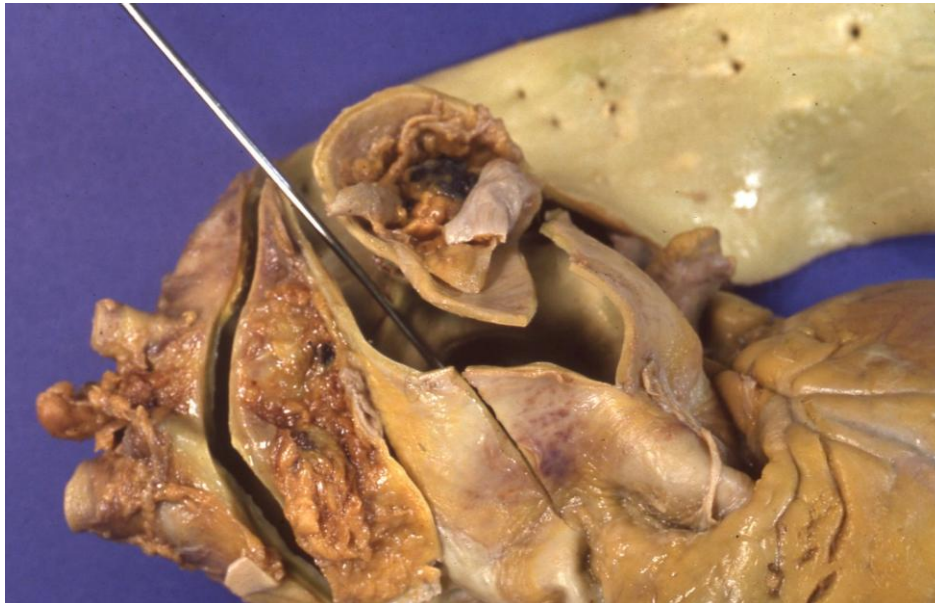
Bodian stain (protein silver stain for neurofibrils)

Silver protein stains normal neurite and cytoskeleton aggregation (such as senile plaques, neurofibrillary tangles and granulovacuolar degeneration).



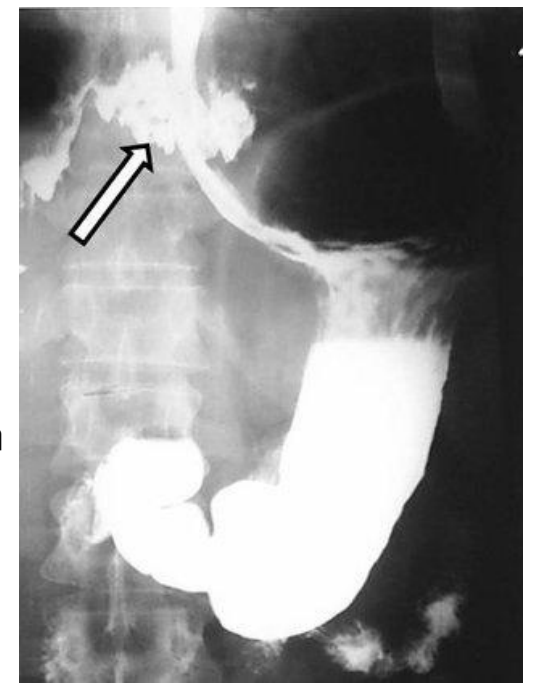
Botallo's duct persistent opening (patent ductus Botalli or arteriosus). Vascular-4-heart

PDA (a probe inserted) allows a left-to-right shunt, resulting in pulmonary hypertension followed by right-sided heart failure.



Boerhaave's syndrome (spontaneous esophageal rupture)

Boerhaave syndrome represents spontaneous esophageal rupture (arrow) caused by sudden increases in esophageal pressure, often triggered by severe vomiting. The condition leads to intense chest pain, difficulty breathing and shock.



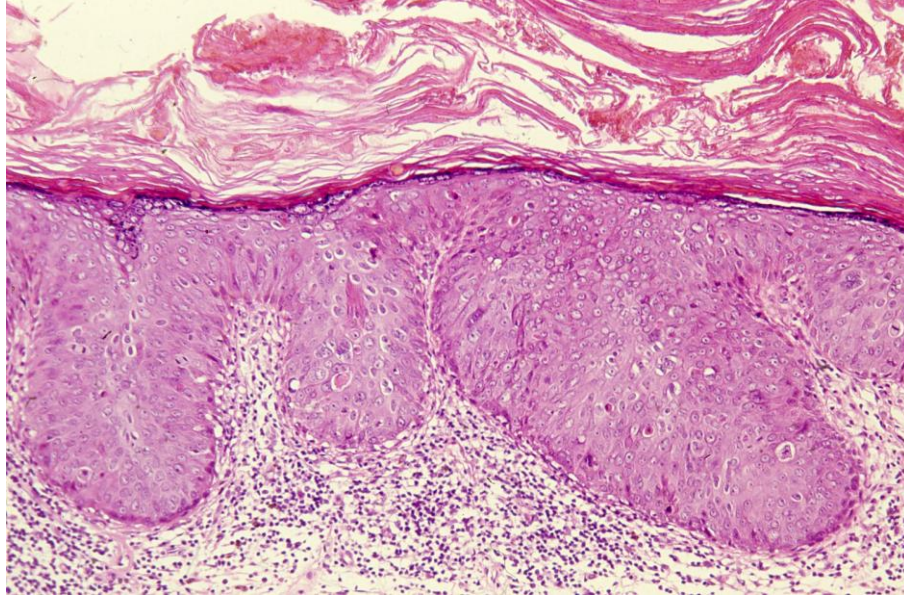
Bouin's fixative (yellow-colored solution)



Bouin's fixative, consisting of picric acid, acetic acid and formaldehyde in an aqueous solution, is used especially for fixation of endocrine tissue.

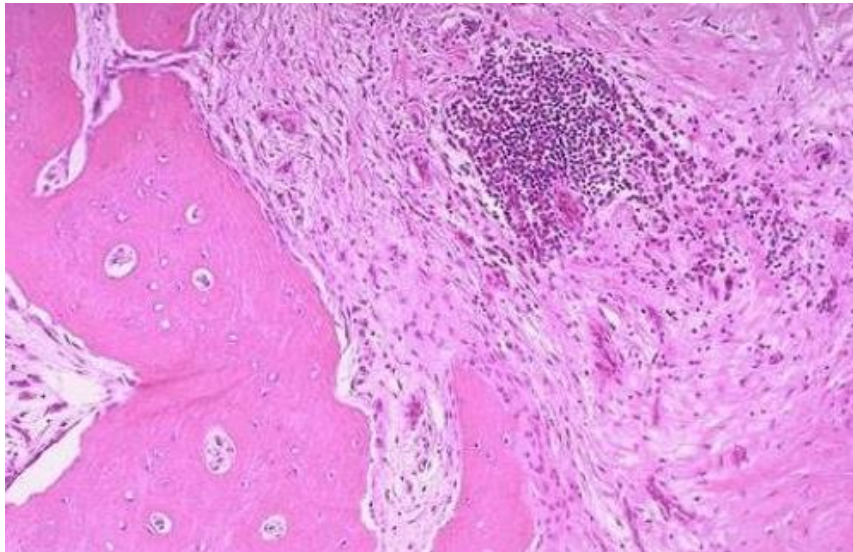
Bowen's disease (squamous cell carcinoma *in situ* of the skin). Sk-441-MENeo through Sk-443-MENeo

Atypical squamous cells occupy the epidermis on the sun-unexposed skin.

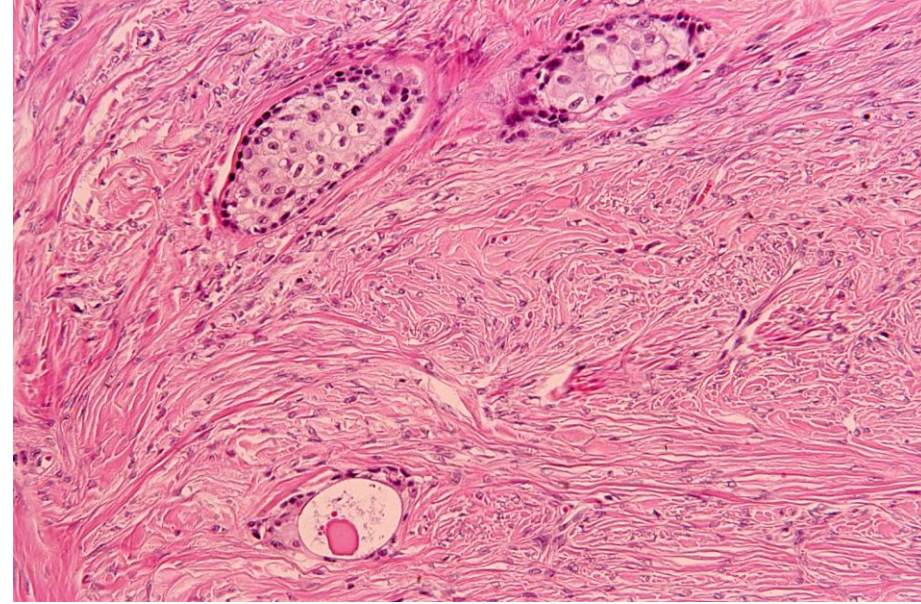


Brodie's abscess (subacute osteomyelitis). ConnectT-37-1-bone

Brodie's abscess is a small and insidious intraosseous abscess, involving the cortex and walled off reactive bone.

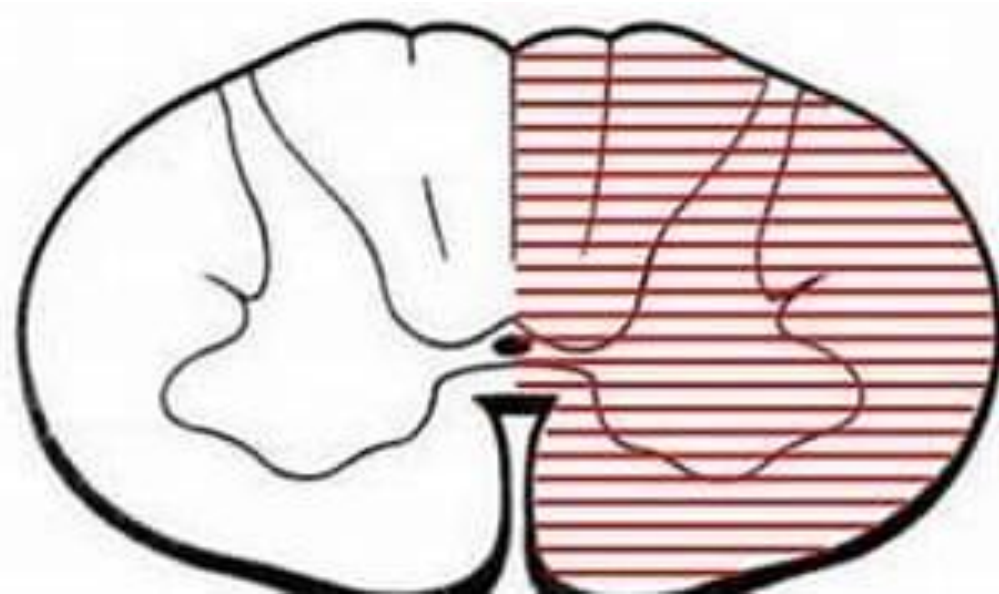


Brenner's tumor: urothelial nests in fibrous stroma. Gyne-193-1-ovary through Gyne-193-4-ovary



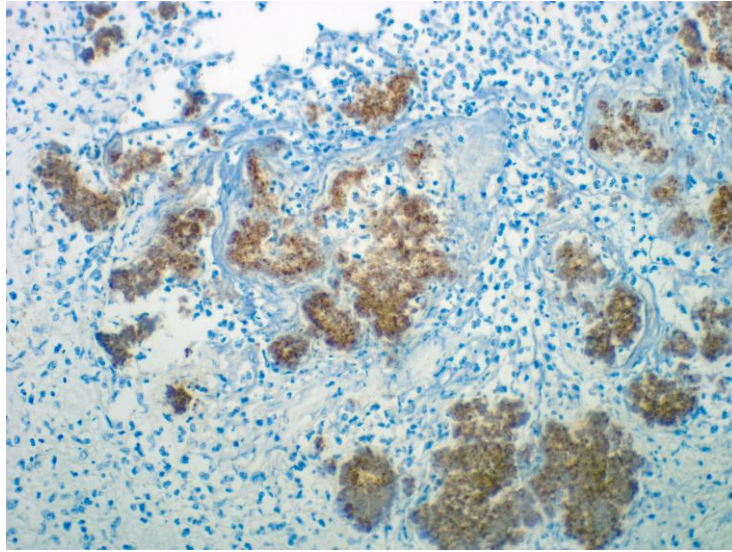
Benign urothelial nests, corresponding to tubal Walthard cell nests, are scattered in desmoplastic stroma.

Brown-Sequard syndrome (hemisection of the spinal cord)



Incomplete spinal cord injury, affecting the lateral half of the spinal cord, causes this syndrome. Paralysis on one side of the body and a loss of sensation on the opposite side are seen.

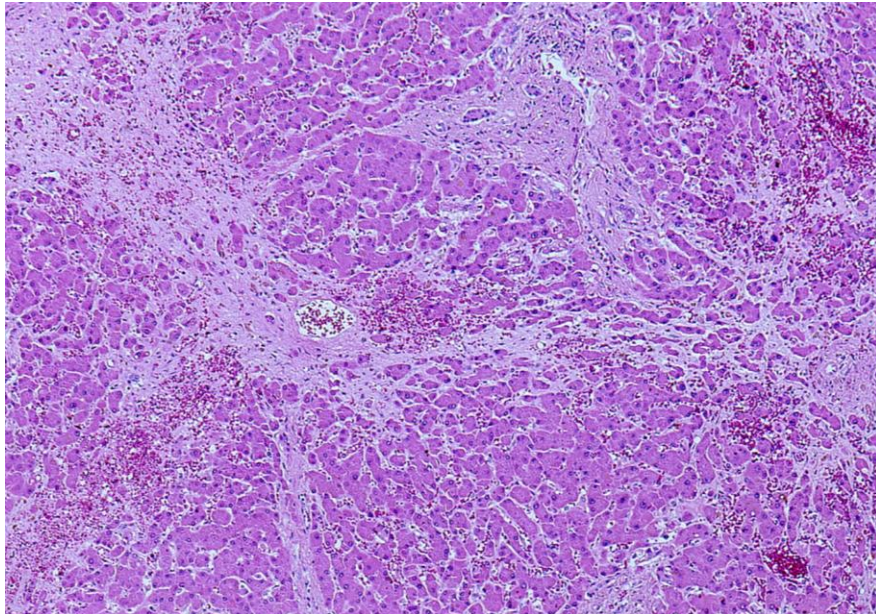
Bruton type agammaglobulinemia (cutaneous botryomycosis, *Staphylococcal aureus* infection in a male young adult. Sk-261-a-Bact



B-cell immunodeficiency promotes bacterial infections, including the skin: immunostaining for staphylococcal antigens.

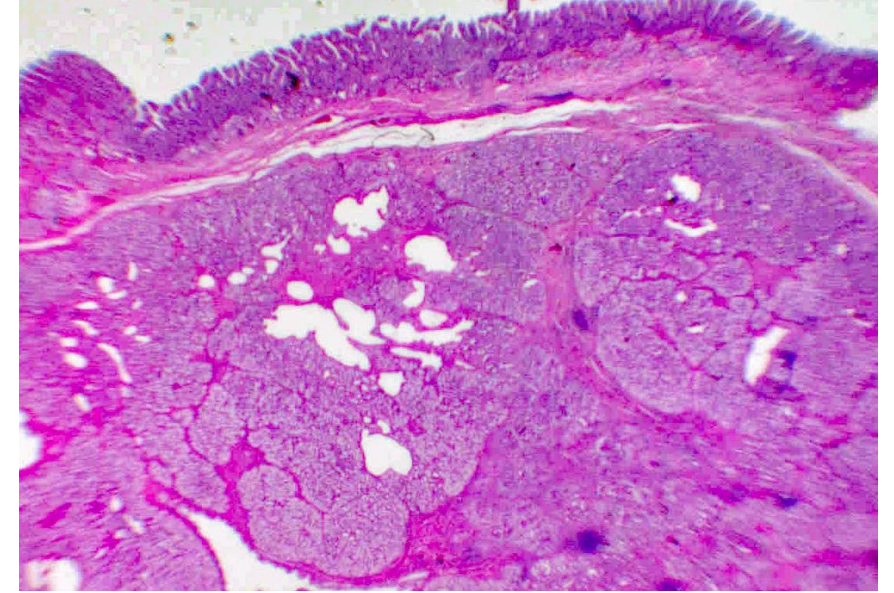
Budd-Chiari syndrome (hepatic vein obstruction).

HBP-83-2-liver



Obstruction of the hepatic veins or inferior vena cava prevents blood from flowing out of the liver, resulting in congestive cirrhosis

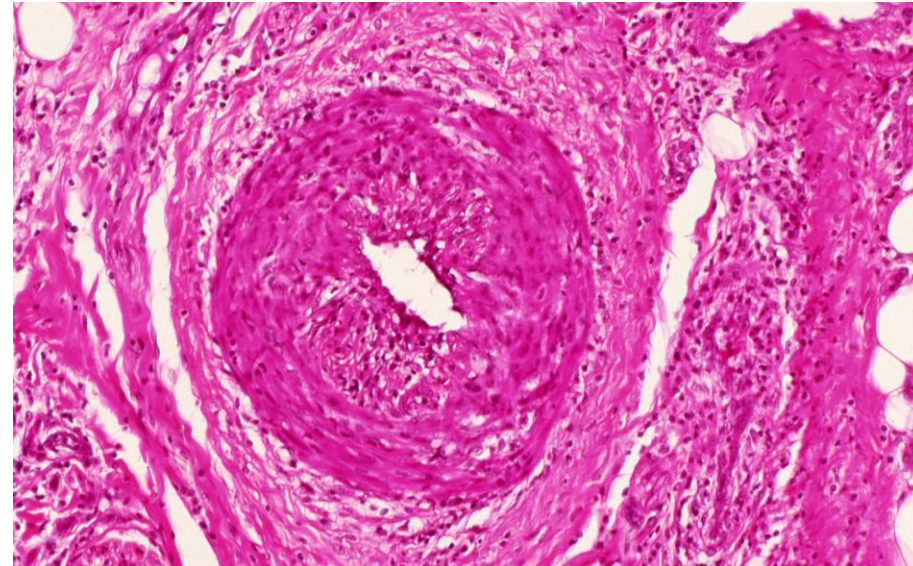
Brunner's gland hamartoma: Nodular lobulated 10 mm-sized growth of Brunner's gland is seen. GI-247-1-small bowel



Brunner's gland lesions, such as cyst, hamartoma and adenoma, may provoke a submucosal tumor

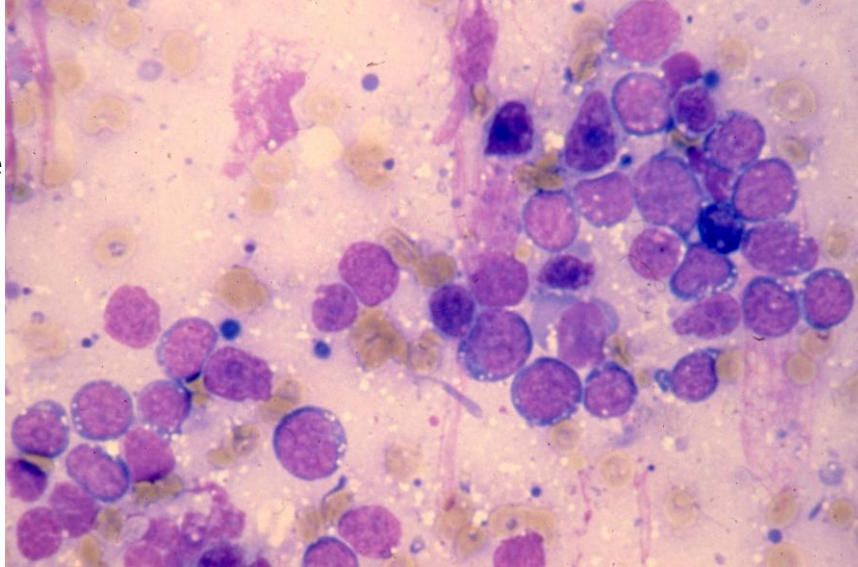
Bürger's disease (thromboangiitis obliterans).

Vascular-99-1-artery and Vascular-99-2-artery



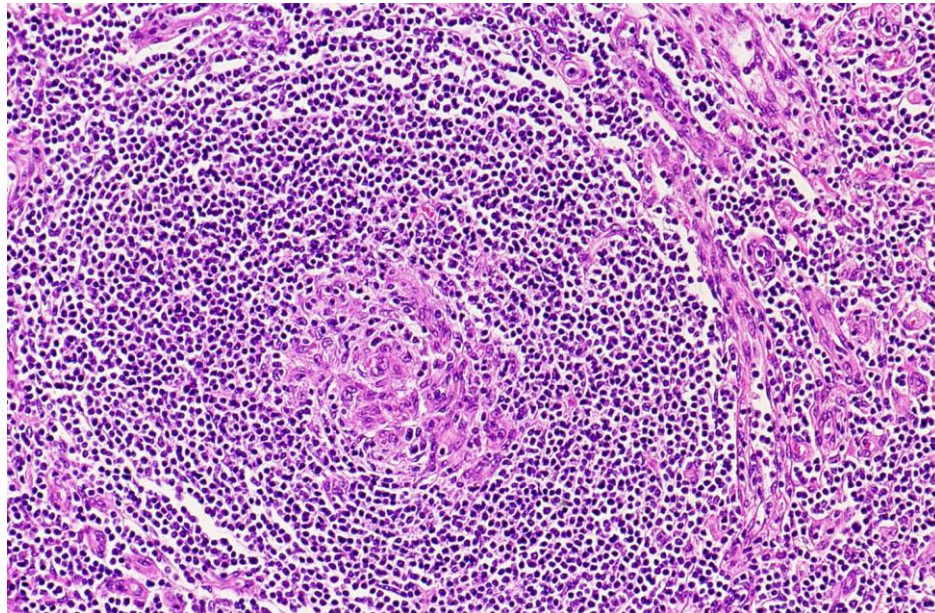
Arterial narrowing in the distal limbs of the male heavy smoker provokes gangrene.

Burkitt lymphoma: fine fat droplets seen in the basophilic cytoplasm (May-Giemsa). Hemato-141-1-LN and Hemato-141-2-LN



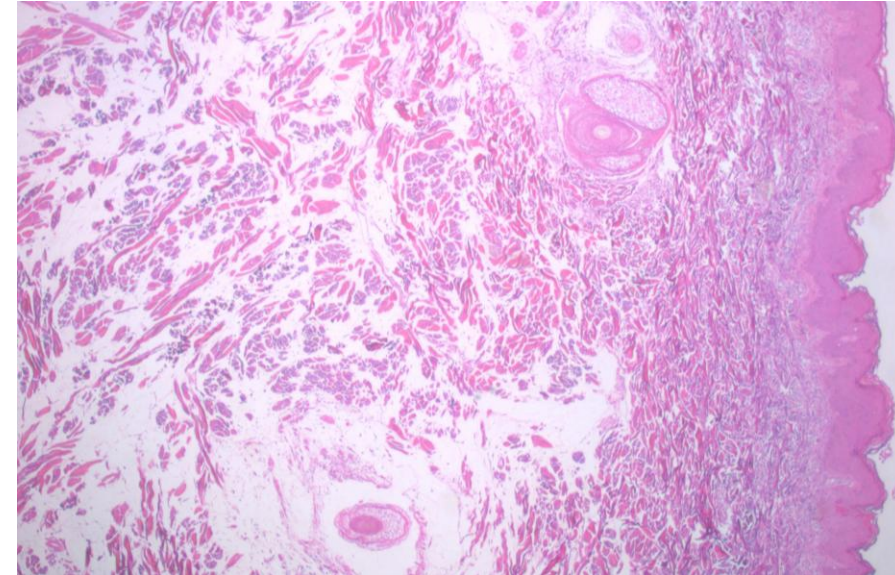
Burkitt lymphoma, a highly aggressive lymphoma of children, consists of monomorphous medium-sized cells with basophilic cytoplasm and lipid droplets.

Castleman's tumor. Reactive lymphadenopathy with vascularity. Hemato-121-1-LN through Hemato-121-4-LN



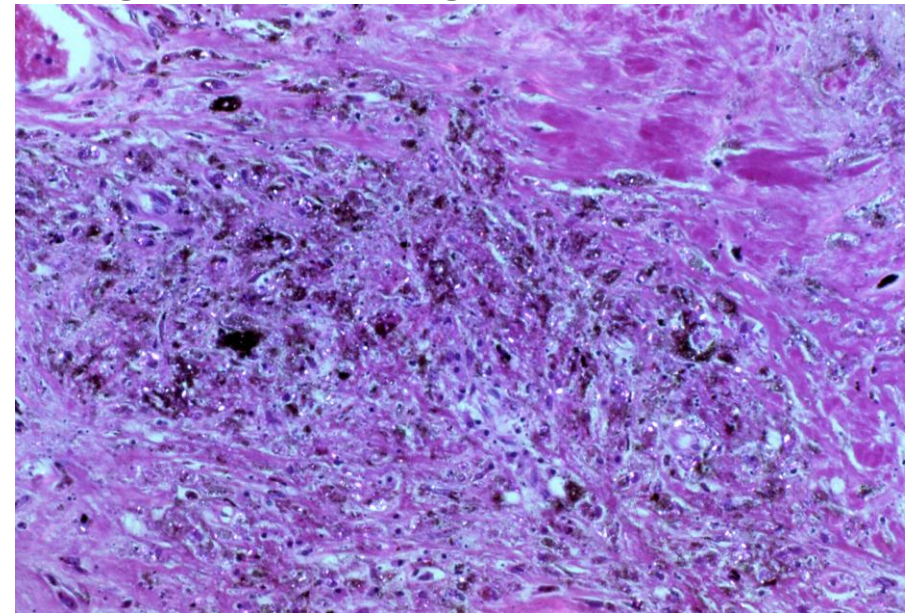
A hyaline vascular type of Castleman's tumor shows follicular structures with hyalinized germinal centers.

Buschke's scleredema adultorum (a dome-shaped nodule on the back). Sk-237-Derm



dermal edema with deposition of acid mucosubstances provoked a dome-shaped nodule.

Caplan's nodule (rheumatoid pneumoconiosis). Lung-59-1-IP, Lung-59-2-IP

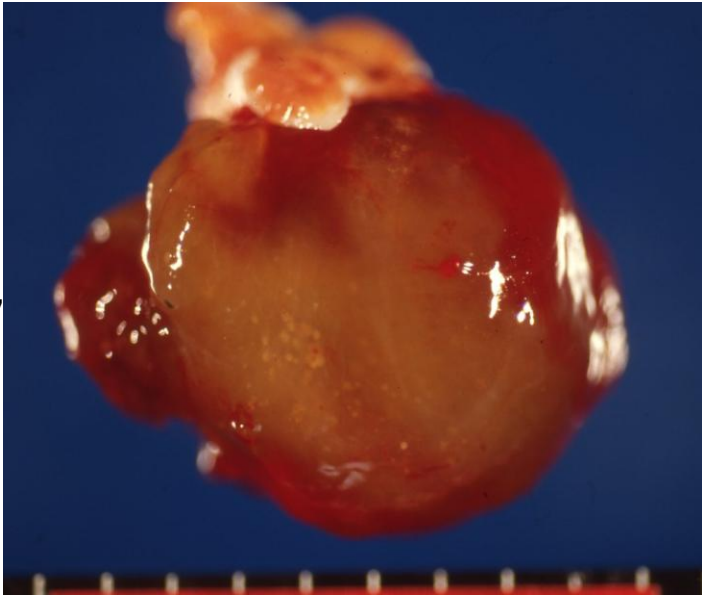


multiple lung nodules (pneumoconiosis) by coal dust exposure in patients with RA. Polarizing microscopy with the H&E section shows polarized, white-shining silica crystals.

Carney's complex (cardiac myxoma variant).

Vascular-46-1-heart, Vascular-46-2-heart

Carney's complex with autosomal dominant mutations in the PRKAR1A gene, presents with multiple myxomas in the heart and skin, lentiginosis, schwannoma, and endocrine overactivity (Cushing's syndrome). About 7% of cardiac myxoma is associated with Carney's complex.



Celsus alopecia (kerion celsi). Inflammatory tinea capitis with scarring alopecia. Sk-329-3-Fung

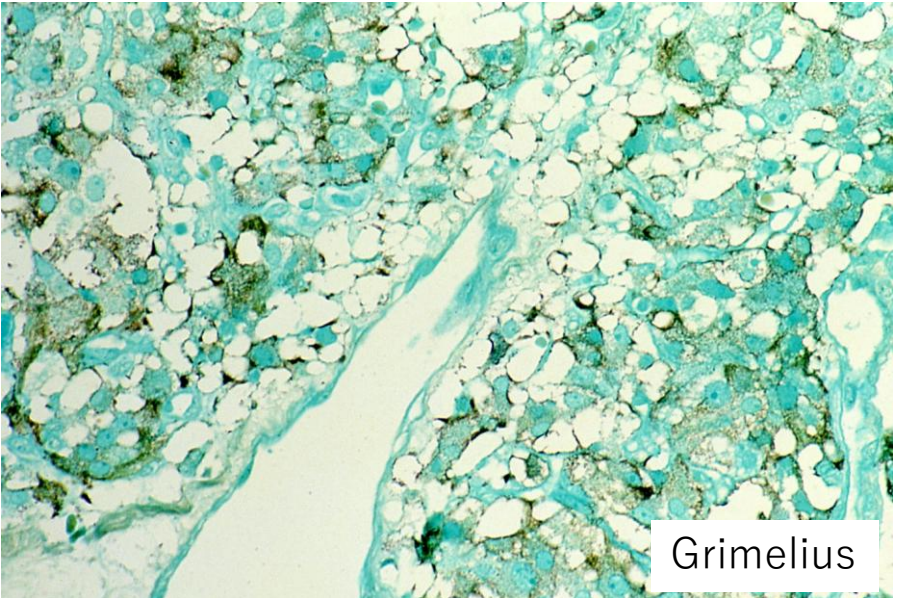
Kerion celsi represents scalp folliculitis with loss of hair in a child



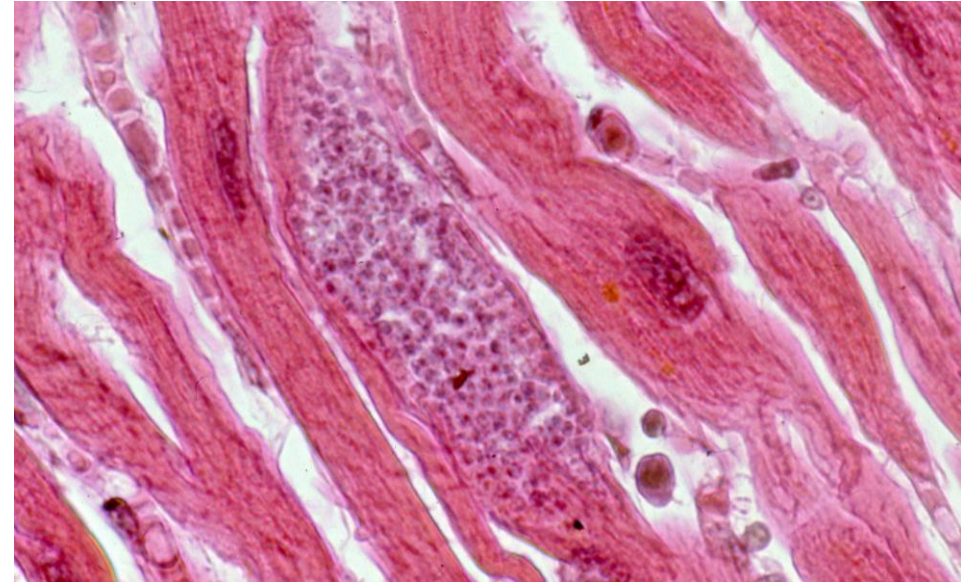
Carney's triad (a subtype of multiple endocrine neoplasia).

GI-162-1-1-stomach through GI-164-stomach, Endo-103-1-Paraganglion through Endo-103-4-Paraganglion

Carney's triad, mainly involving young women, is a specific type of MEN with gastric GIST, pulmonary chondroma and extra-adrenal paraganglioma. A retroperitoneal "argyrophilic" paraganglioma in 30 y-o woman is shown.

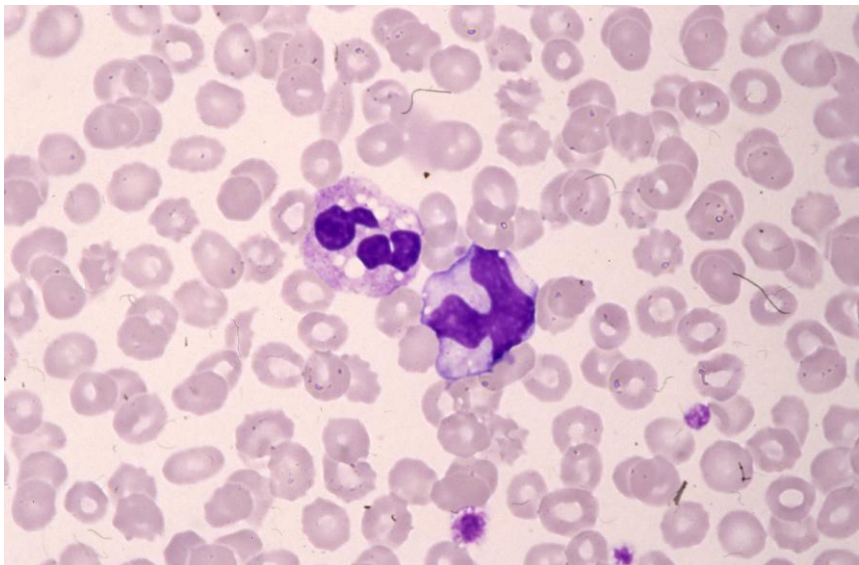


Chagas disease (cardiac *Trypanosoma cruzi* infection)
Vascular-18-1-heart and Vascular-18-2-heart



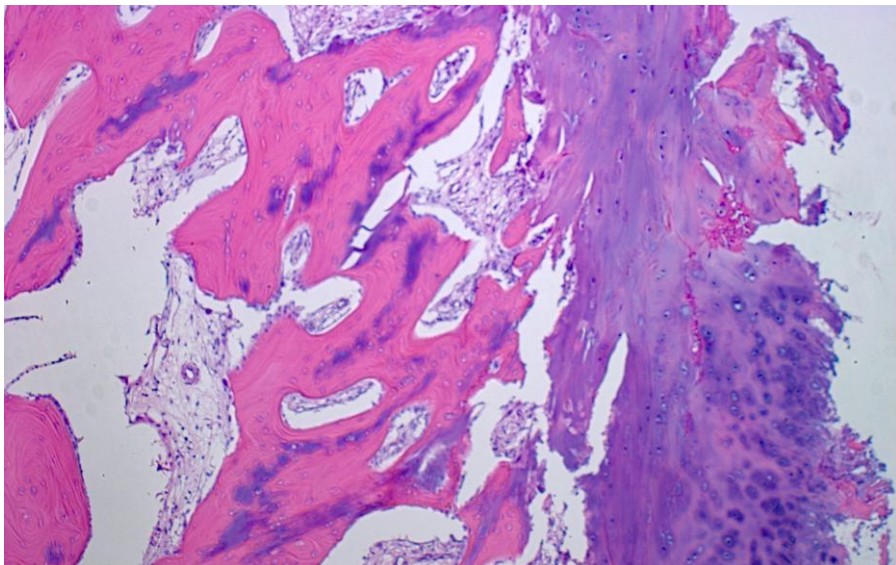
protozoan bodies clustered in the heart muscle cell

Chanarin-Dorfman syndrome: neutral lipid storage disease with ichthyosis, fatty liver and neutrophil lipid droplets. Sk-146-a-Epid



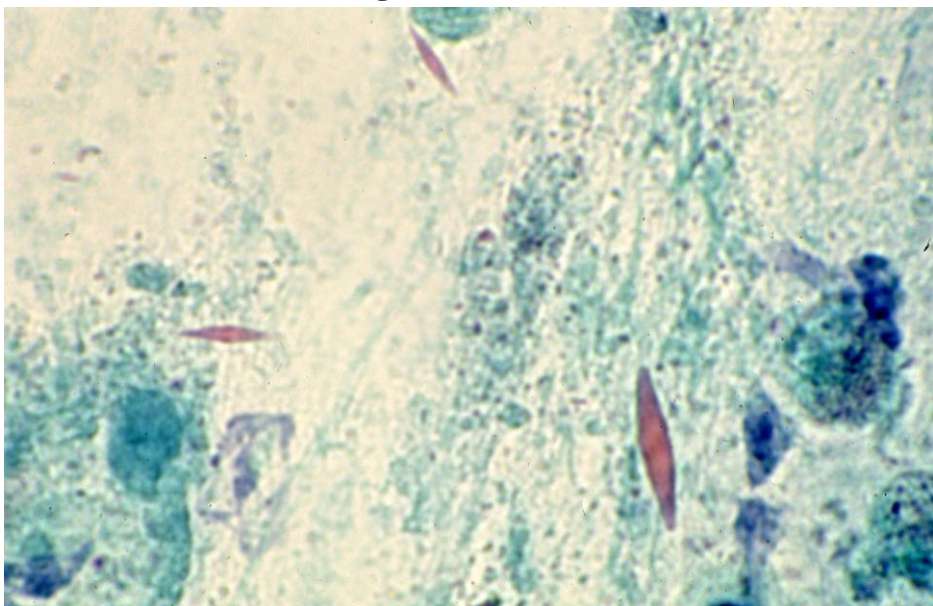
lipid vacuoles in the cytoplasm of neutrophils

Charcot joint: foot joint destructive arthropathy associated with diabetic neuropathy. ConnectT-26-joint



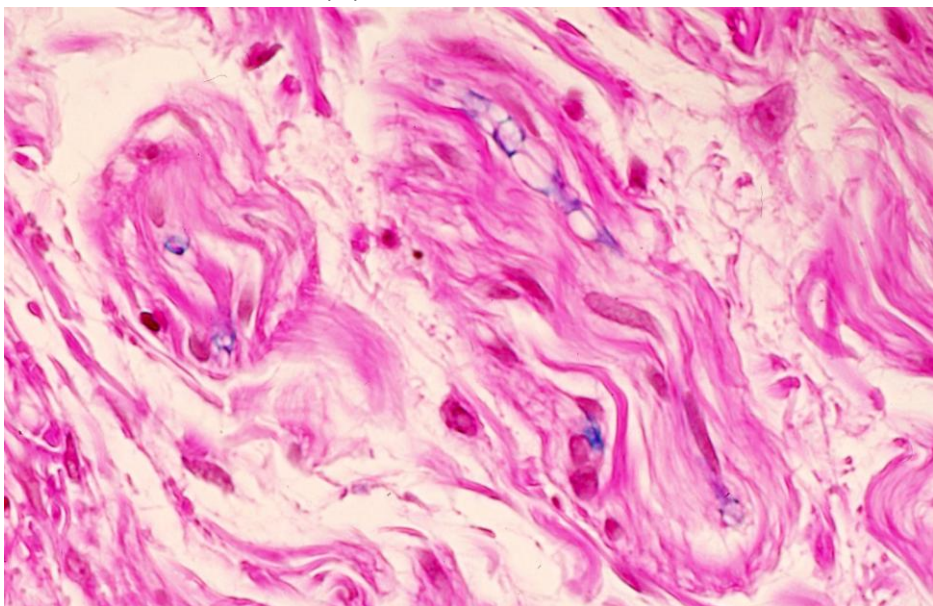
cartilage erosion with reactive osteoplasia

Charcot-Leiden's crystals (rhomboid crystals with eosinophilic infiltration). Lung-21-bulla



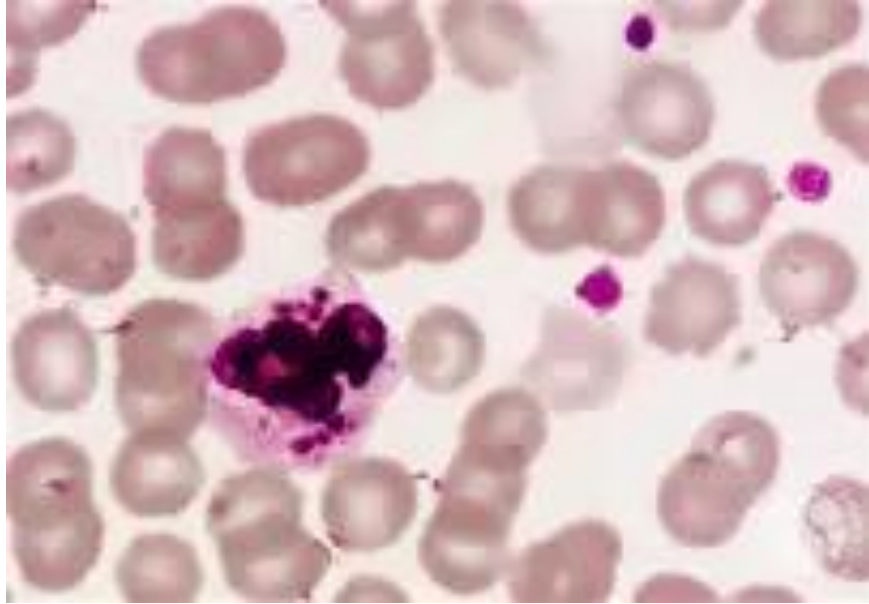
sputum cytology: The rhomboid crystals derive from eosinophil granules.

Charcot-Marie-Tooth disease: hereditary peripheral neuropathy with onion bulb appearance. neuro-163-peripheralN



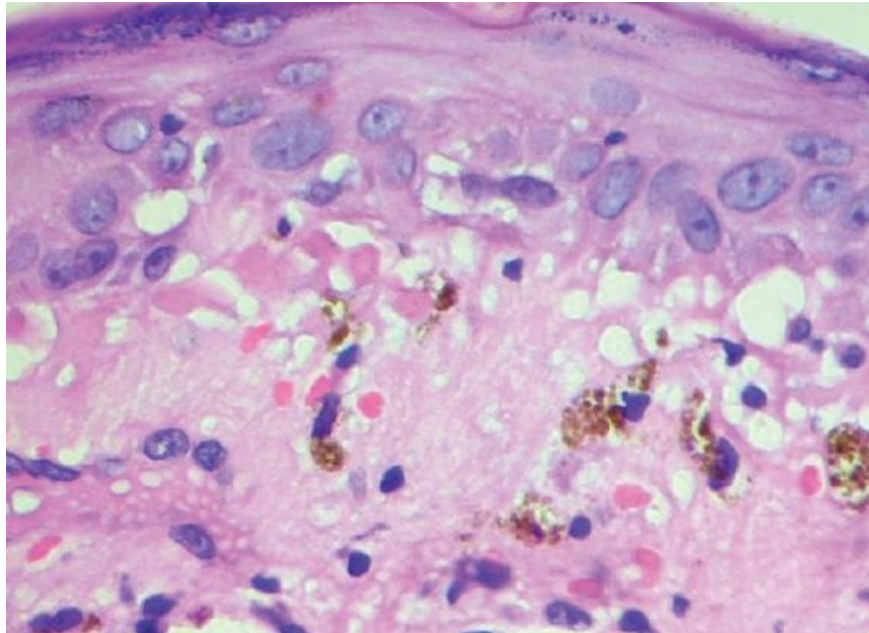
onion bulb appearance seen in the peripheral nerve fibers

Chédiak-Higashi syndrome with hereditary neutrophil dysfunction. cyto-78-5-PB



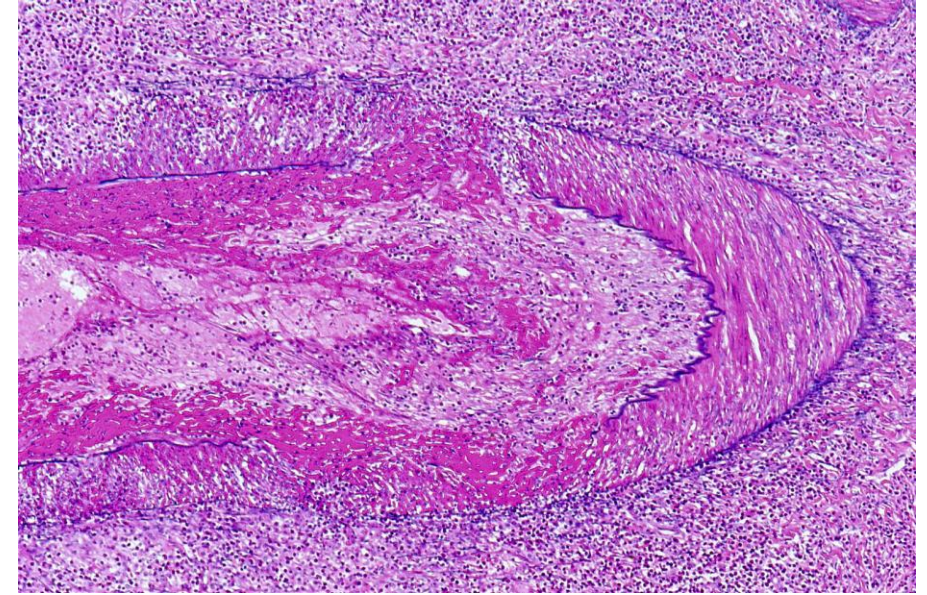
coarse cytoplasmic inclusions in neutrophils

Civatte body (apoptotic keratinocyte)



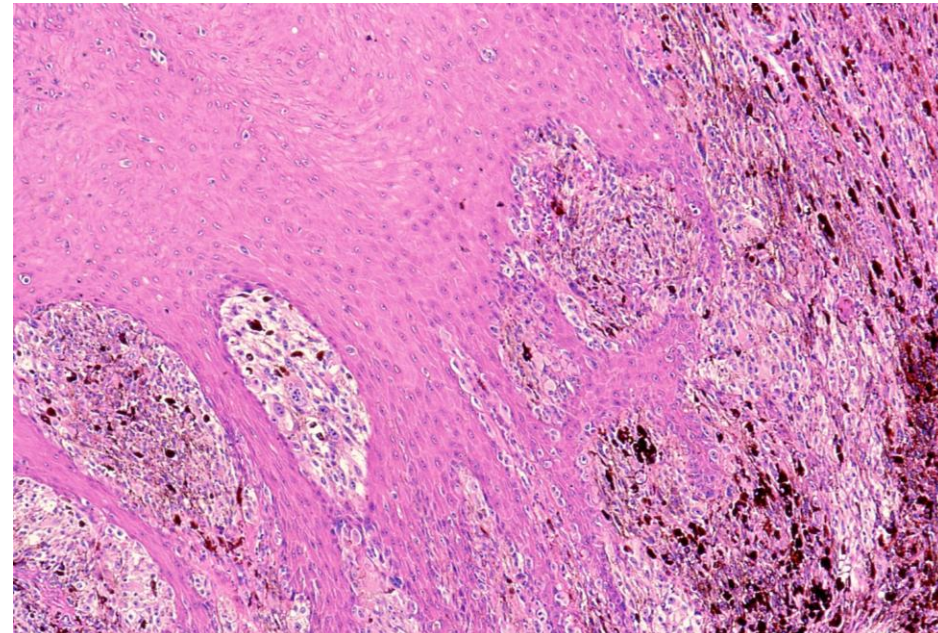
Civatte bodies, small, acidophilic aggregates of apoptotic keratinocytes, are associated with basal liquefaction, particularly in oral lichen planus.

Churg-Strauss syndrome (eosinophilic granulomatosis with polyangiitis). Lung-33-autoimmune, GI-202-2-small bowel



necrotizing angiitis with destruction of the elastic lamina (colon, VB-H&E)

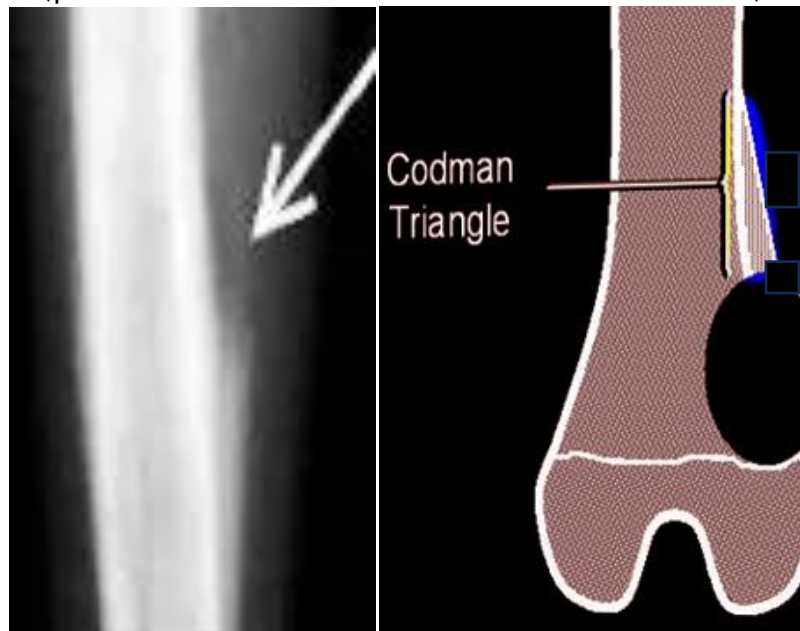
Clark level (staging for cutaneous malignant melanoma)



Level 1: Melanoma *in situ*, Level 2: Invasion into the papillary dermis, Level 3: Invasion to the junction of the papillary and reticular dermis, Level 4: Invasion into the reticular dermis, and Level 5: Invasion into subcutaneous layer.

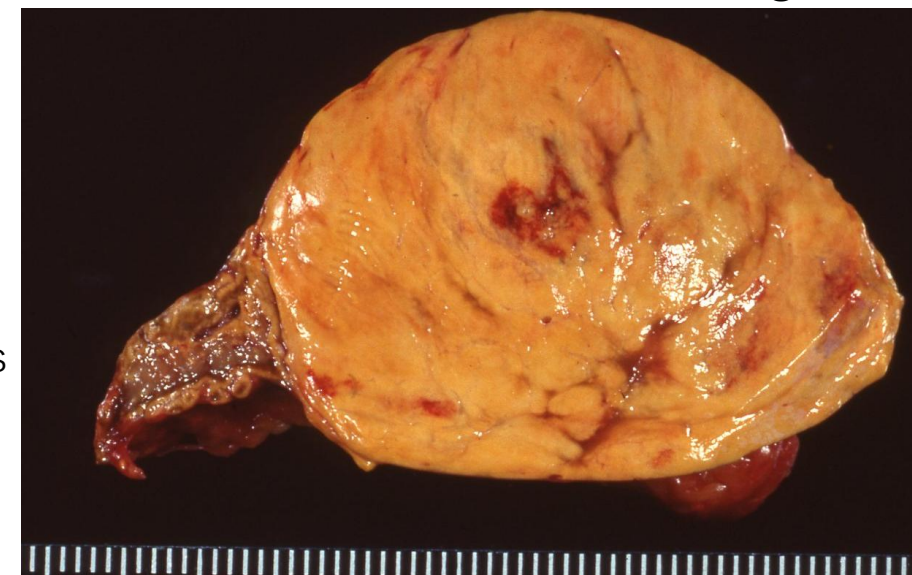
Codman's triangle (periosteal reaction in osteosarcoma)

Codman triangle, a radiologic sign seen on musculoskeletal plain films, represents a type of periosteal reaction seen in osteosarcoma or Ewing sarcoma. The raised periosteal ridge with ossification appears as a triangular shape.



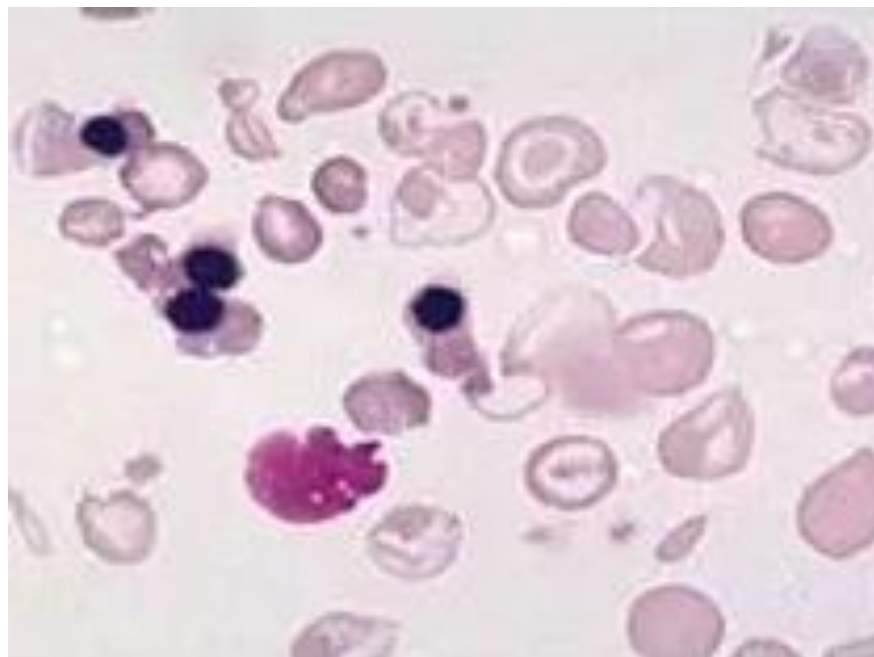
Conn's syndrome (primary hyperaldosteronism: canarian yellow-colored adenoma). Endo-78-1-Adrenal through Endo-78-4-Adrenal

Canarian yellow color is characteristic of Conn's adenoma.



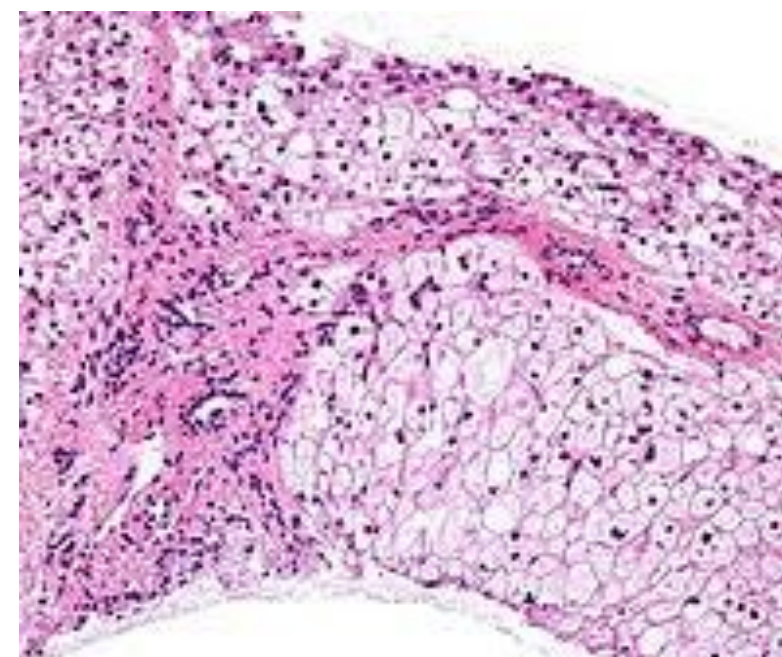
Cooley's anemia (homozygous beta-thalassemia major)

Cooley anemia, a hereditary hemoglobin disorder, common in Mediterranean population, results from the absence of the beta-globin. Ineffective erythropoiesis causes hypochromic microcytic anemia with target cells and nucleated red cells.



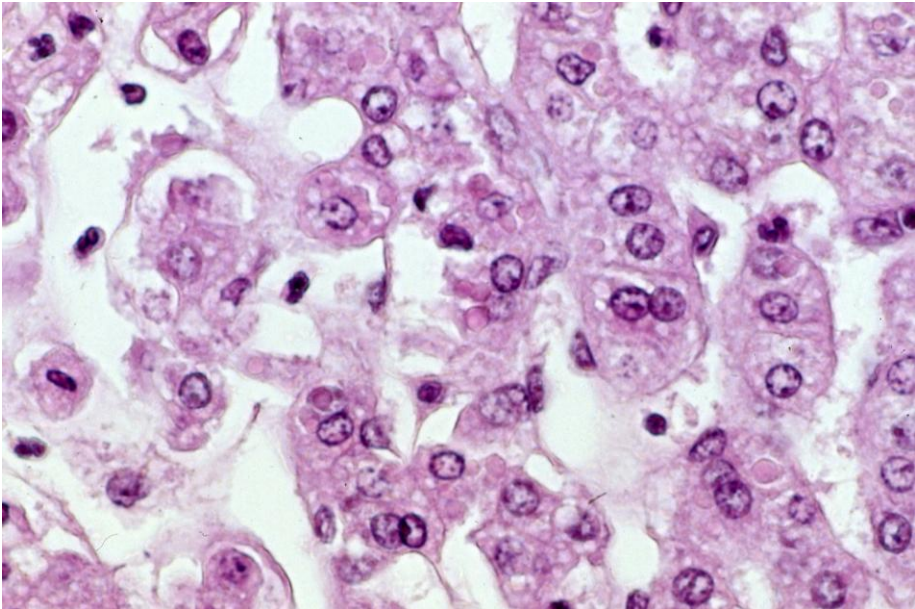
Cori's disease (glycogen storage disease, type III)

Cori disease is an autosomal recessive hereditary disorder caused by a deficiency in glycogen debranching enzymes. Accumulation of glycogen occurs in the liver, cardiac muscle and skeletal muscles, causing hypoglycemia, hepatomegaly, cardiomyopathy and growth delays.



Councilman's body (acidophilic body: apoptotic hepatocyte)

Councilman body is an eosinophilic globule of apoptotic hepatocyte. Ultimately, the fragment is phagocytized by macrophages. It is found in acute viral hepatitis. Yellow fever case is shown here.



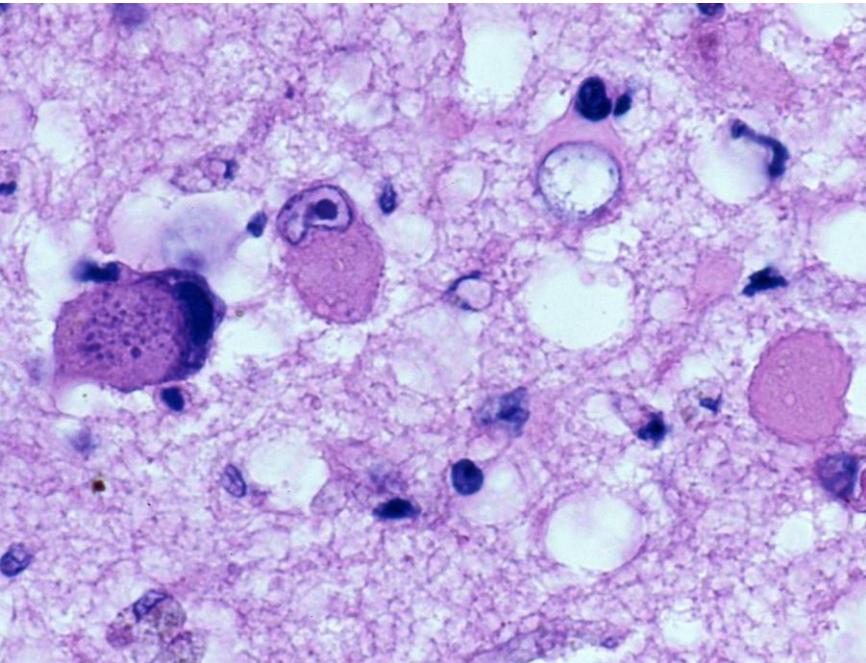
Cowden syndrome (hereditary multiple hamartomas)

Cowden syndrome, an autosomal dominant genetic disorder with mutations in the PTEN gene, is featured by developing multiple hamartomas in the skin, gastrointestinal tract, breast, thyroid and central nervous system. The tumors appear in late adolescence to early adulthood. The patients have an increased risk for breast and thyroid cancers.

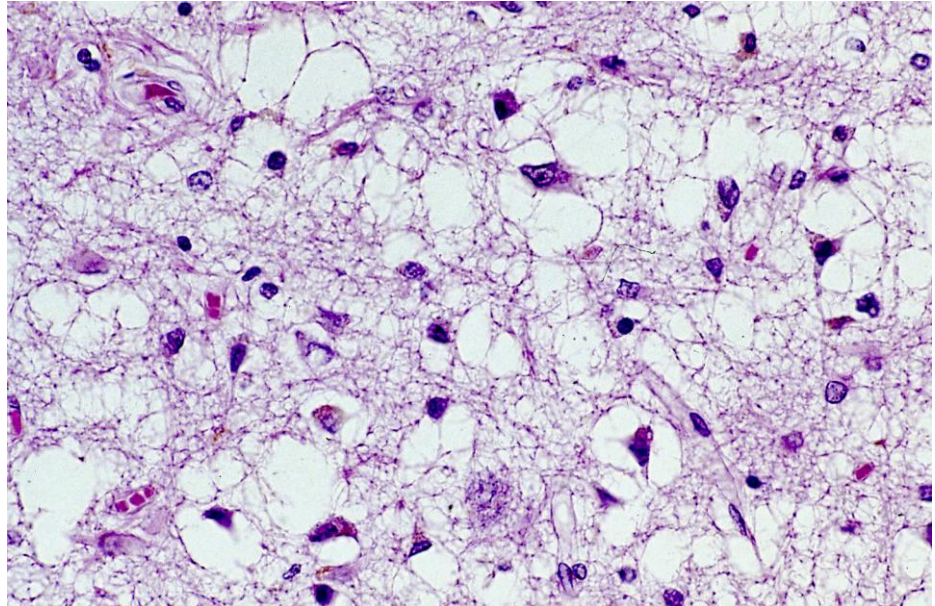


Cowdry type A nuclear inclusion (targeted inclusion)

Cowdry type A intranuclear inclusion body is an eosinophilic or basophilic inclusion, typically associated with viral infections such as HSV and VZV. Viral particles can be observed both immunohistochemically and ultrastructurally. HSV encephalitis is shown here.

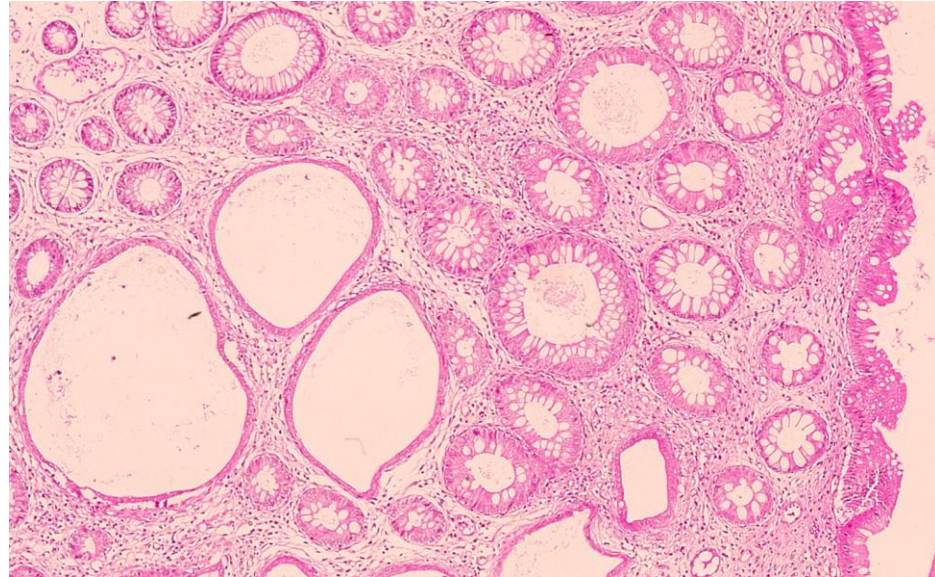


Creutzfeldt-Jakob's disease (prion-induced dementia):
neuro-60-1-brain and neuro-60-1-brain



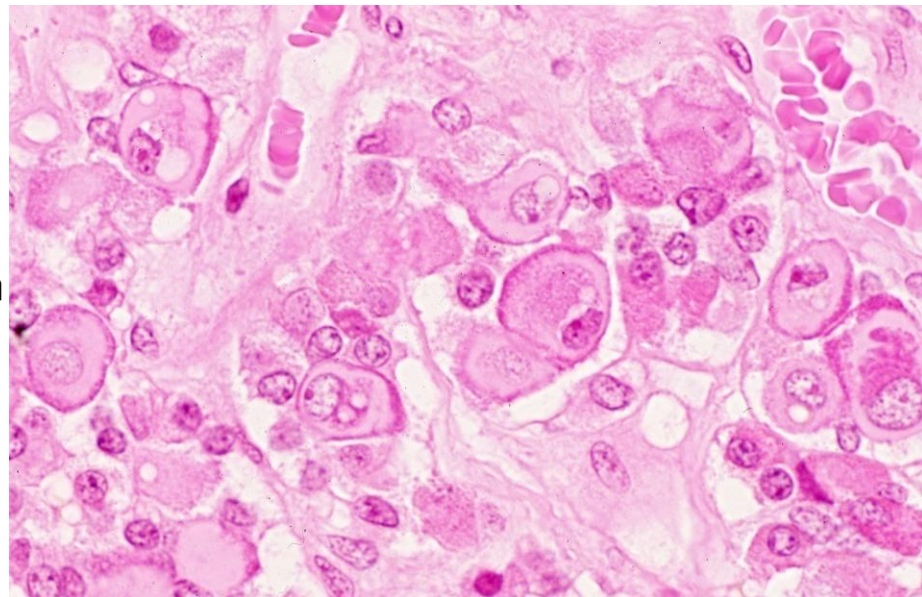
Spongiform encephalopathy is characteristic of this prion disorder.

Cronkhite-Canada syndrome (non-hereditary polyposis). GI-76-a-stomach, GI-248-4-small bowel and GI-409-colorectum



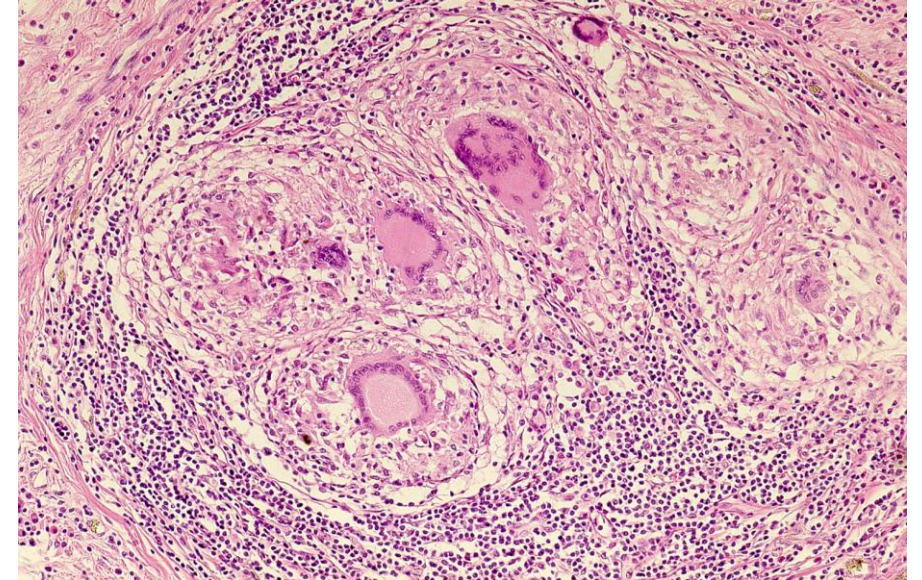
hamartoma-
tous cystic
change of
the gastric
glands

Crooke's hyaline change: Hyaline cytoplasm of pituitary ACTH cells due to serum cortisol excess. Endo-6-Pit



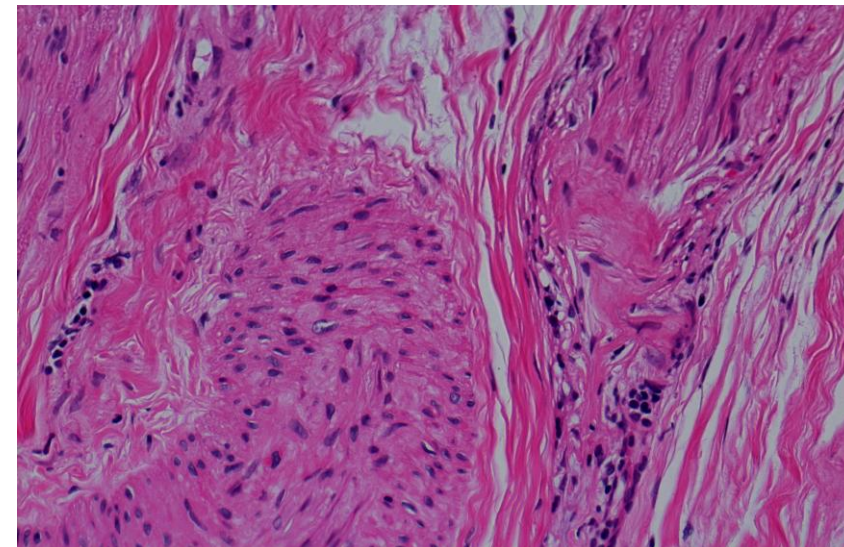
accumulation
of cytokeratin
filaments in
ACTH cells in
the anterior
pituitary
gland

Crohn's disease: Ileal longitudinal ulceration with granulomas. GI-242-1-small bowel through GI-242-3-small bowel



Langhans
giant cells
seen,
resembling
sarcoidosis

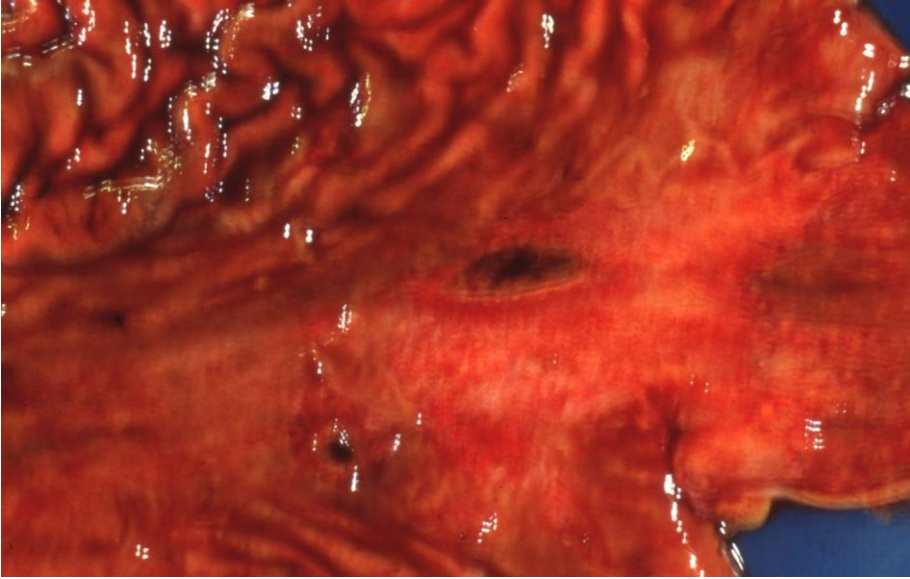
Crow-Fukase syndrome: POEMS (polyneuropathy, organomegaly, endocrinopathy, M-protein, and skin changes, Takatsuki' disease). neuro-170-peripheralN



sural nerve
biopsy:
Perivascular
lymphocytic
infiltration is
seen.

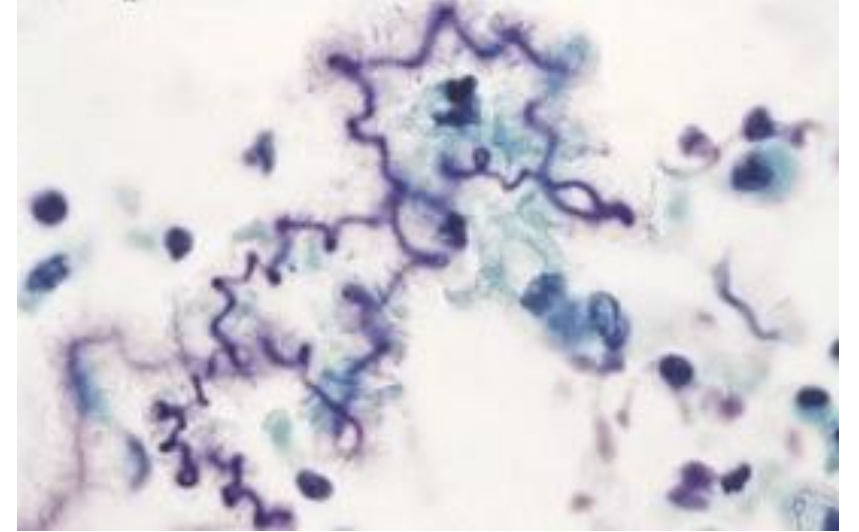
Curling ulcer (gastric ulcer seen in severe burns)

Curling's ulcer is an acute, shallow gastric ulcer as a complication of severe burns. Reduced plasma volume leads to ischemia and sloughing of the gastric mucosa.



Curschmann's spiral: sputum of asthmatics with spiral-shaped mucus plugs from bronchial mucous gland ducts. Lung-21-bulla

Curschmann's spirals represent hypersecretion of bronchial mucous glands



Cushing's syndrome; functioning adrenocortical adenoma. Endo-81-1-Adrenal and Endo-81-2-Adrenal

The adrenocortical tumor is yellowish or brownish in color. It may be black, because of rich lipofuscin.



Cushing ulcer (gastric ulcer associated with elevated intracranial pressure). GI-77-2-stomach

Cushing ulcer occurs in patients with high intracranial pressure typically with cerebral hemorrhage.

