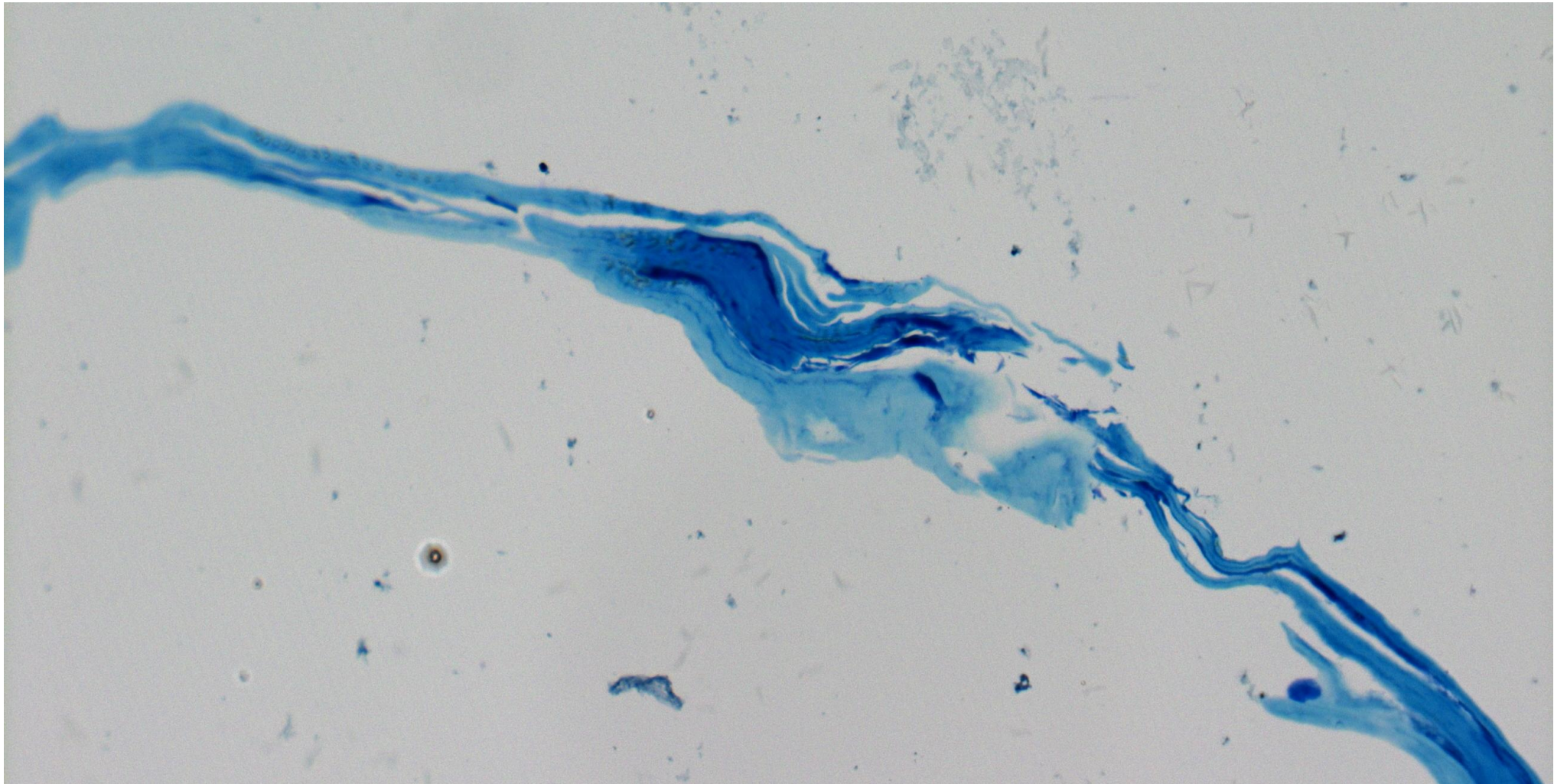


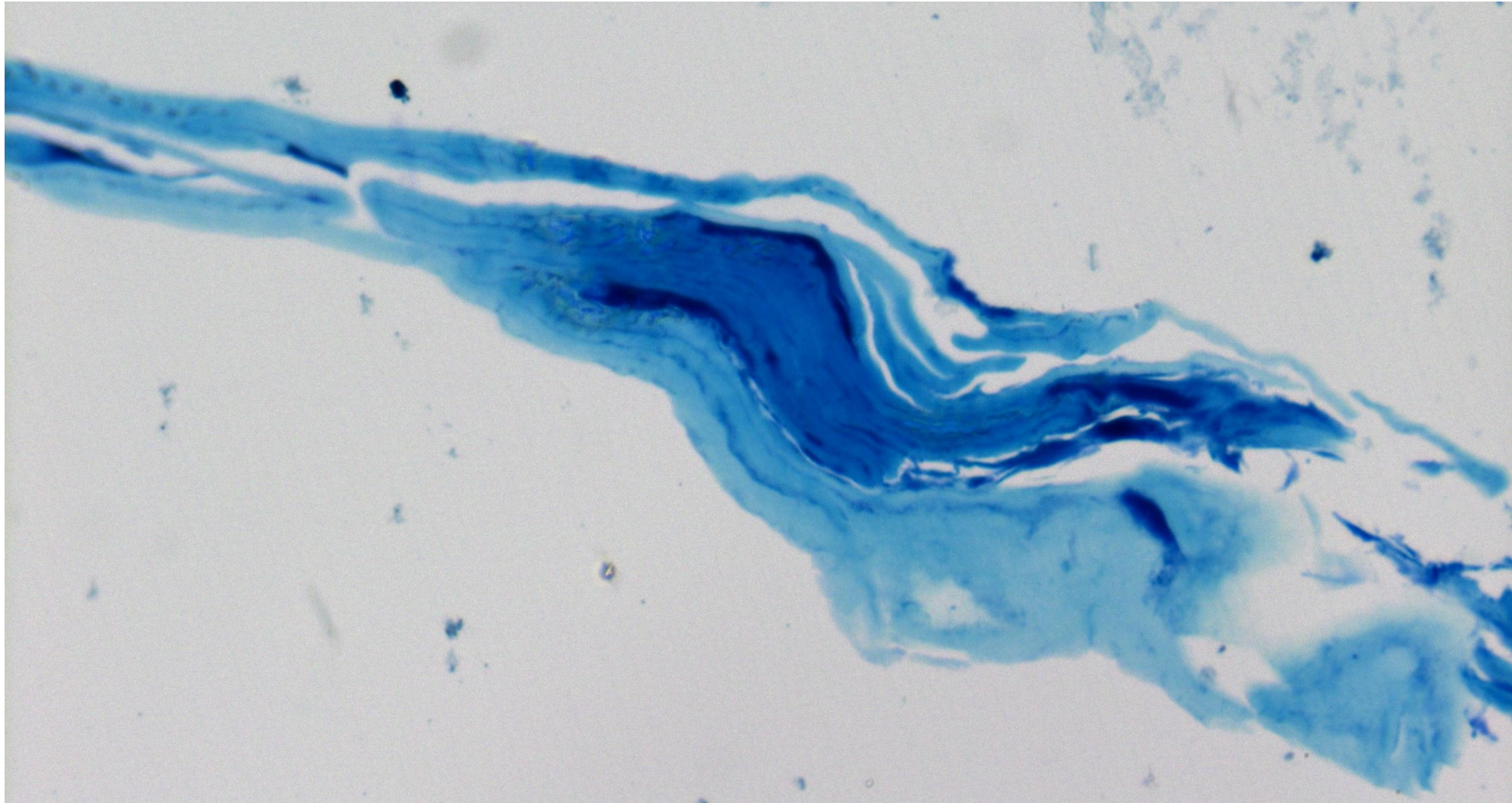
Premacular membrane (epiretinal membrane)

Abnormal oscillatory movements involving the vitreous may result in the formation of premacular membrane, also called as epiretinal membrane or macular pucker. A delicate membrane develops on the surface of the macular retina as the vitreous separates from the retina (posterior vitreous detachment). This then causes wrinkling of the retina, leading to blurred and distorted central vision. Premacular membrane happens during the natural ageing process, but can also occur after surgery or inflammation of the eye. Vitrectomy is a possible choice of therapy. In the present adult male case of myotonic dystrophy, idiopathic formation of premacular membrane is complicated.

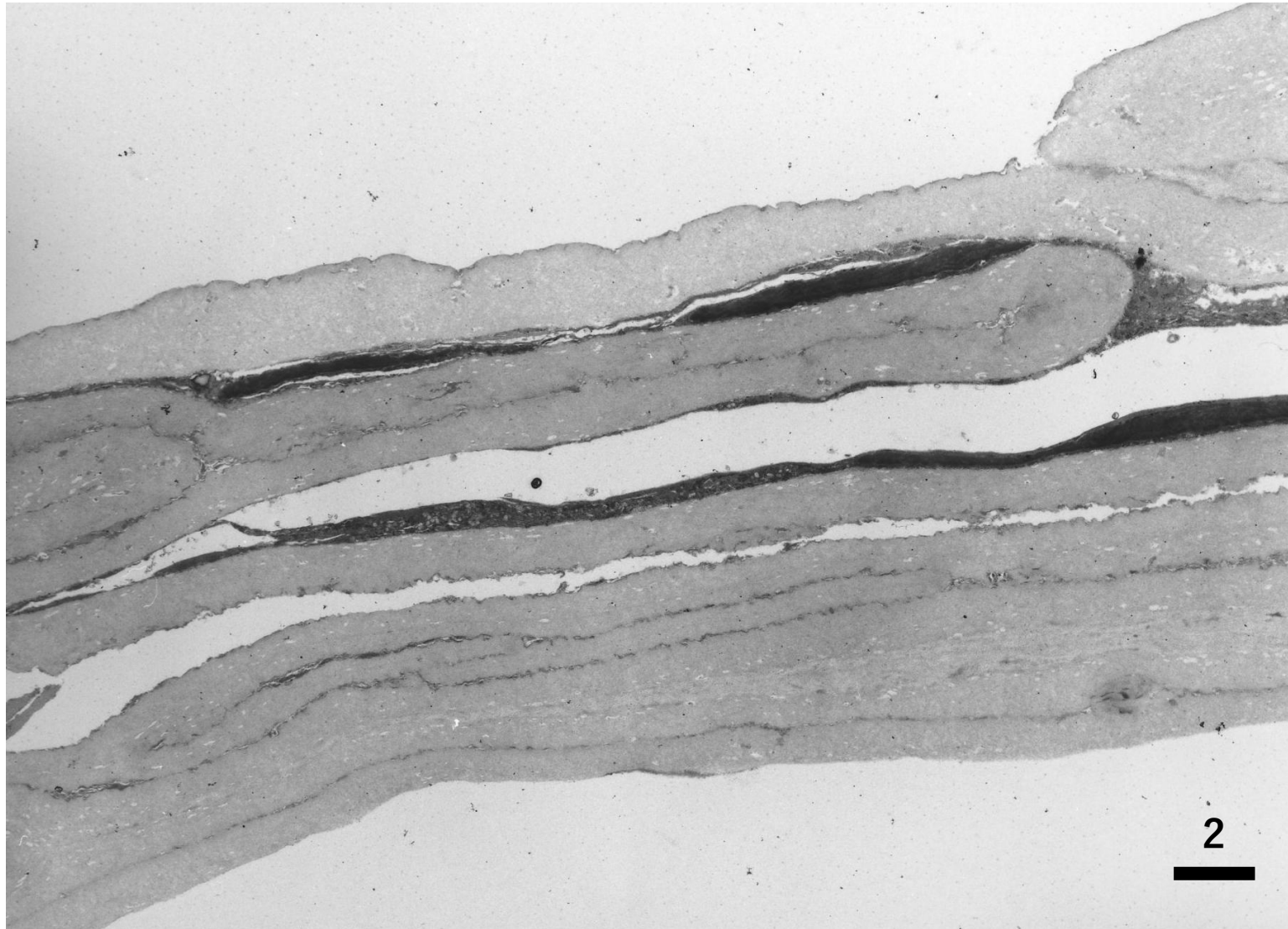
Ref.: Macular Disease Foundation Australia. Epiretinal membrane (macular pucker). Available from: <https://www.mdfoundation.com.au/about-macular-disease/other-macular-conditions/epiretinal-membrane-macular-pucker/>



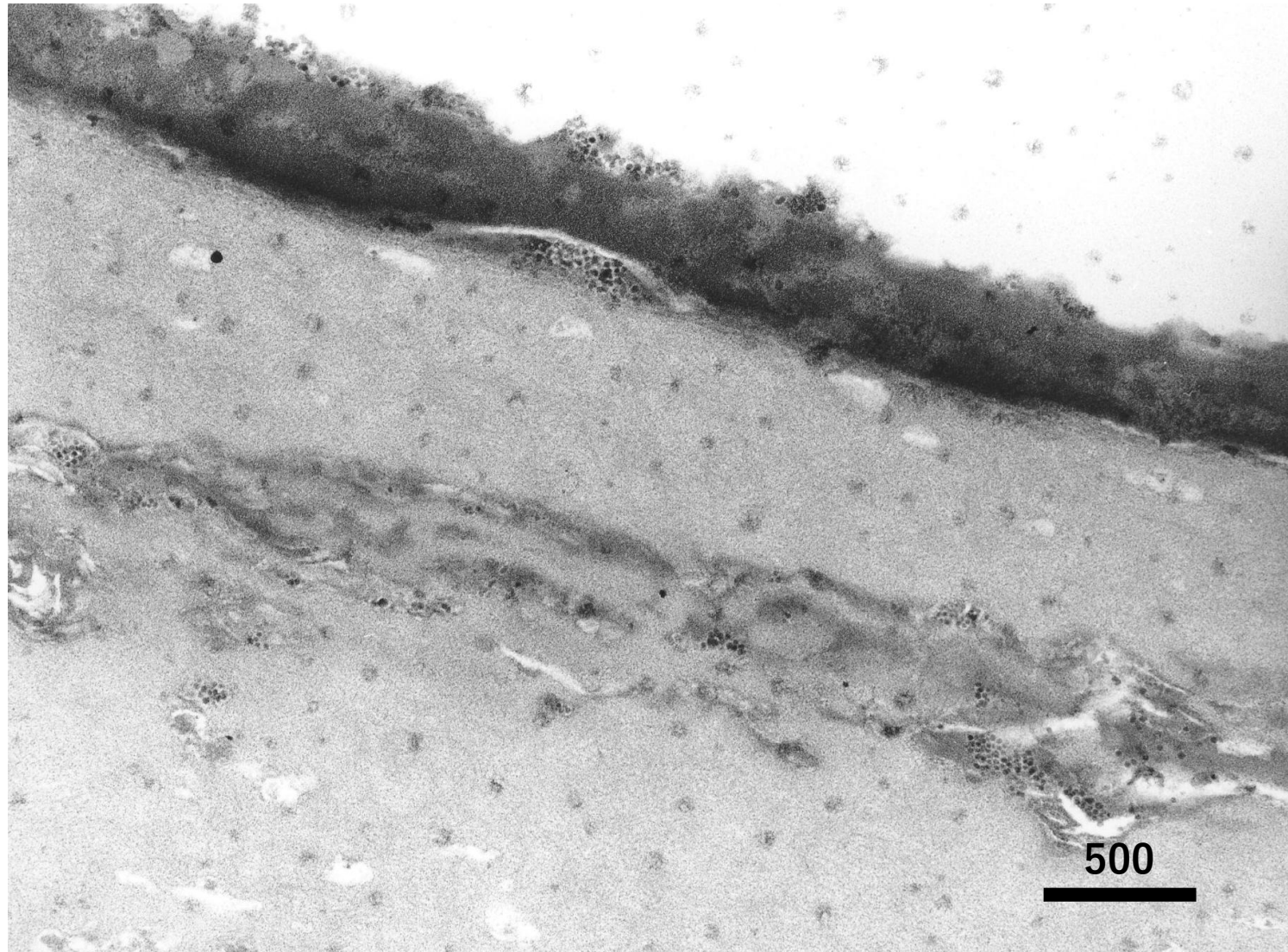
Idiopathic formation of premacular membrane in an adult male patient with myotonic dystrophy. A thin ($<10\text{ }\mu\text{m}$) membranous structure is formed. Thick-stained fibrinous material is lamellated (Toluidine blue-stained thick section for EM study-1)



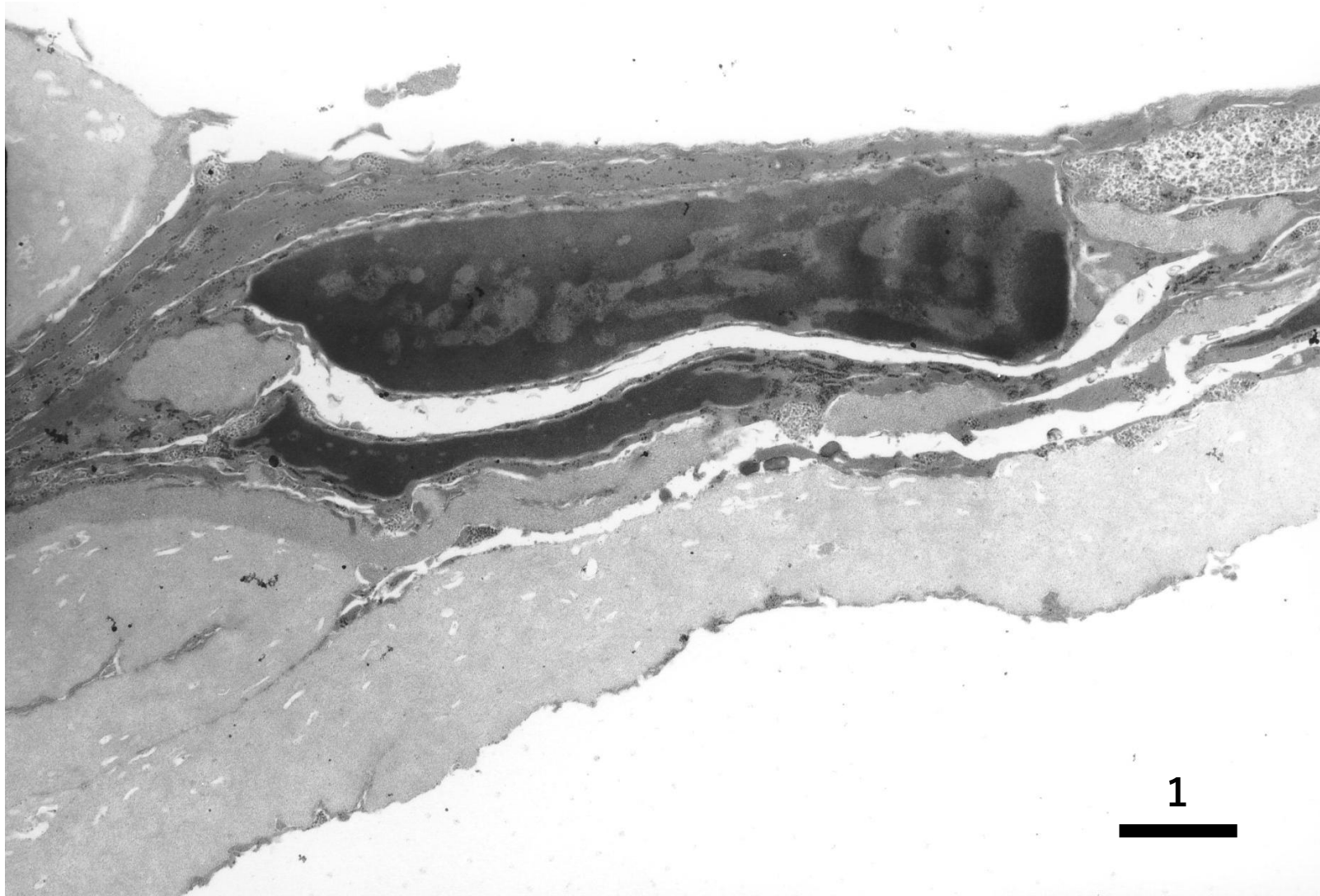
Idiopathic formation of premacular membrane in an adult male patient with myotonic dystrophy. A thin ($<10\text{ }\mu\text{m}$) membranous structure is formed. Thick-stained fibrinous material is lamellated (Toluidine blue-stained thick section for EM study-2)



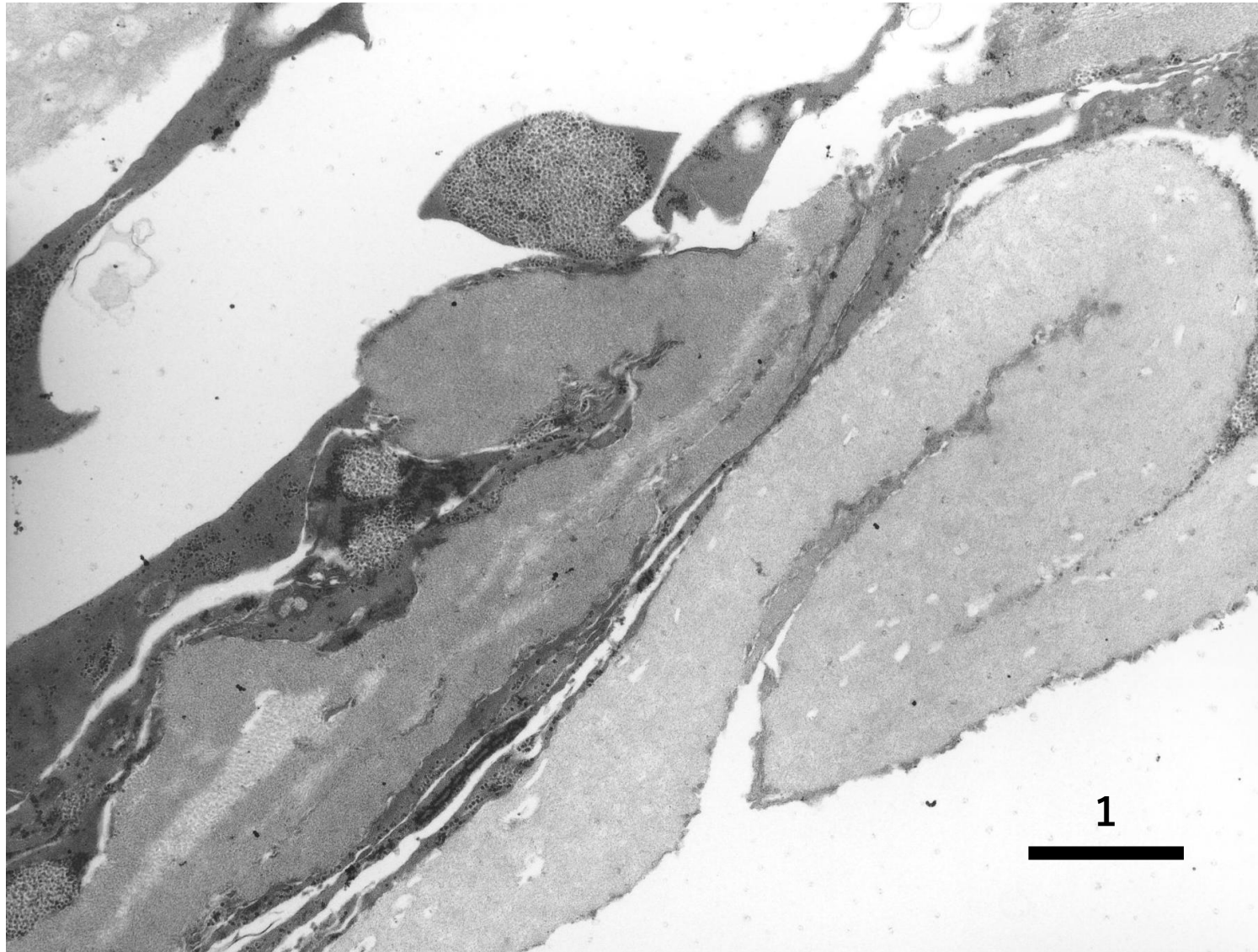
Ultrastructure of idiopathic premacular membrane seen in an adult male patient with myotonic dystrophy. A thin (6-7 μm) laminated membranous structure is formed. Electron-dense lineated layers are seen in the fibrillar background. Thick-stained fibrinous layer is lamellated (EM-1)



Ultrastructure of idiopathic premacular membrane seen in an adult male patient with myotonic dystrophy. A thin laminated membranous structure is formed. An electron-dense lineated layer and thick-stained fibrinous layer are lamellated. Electron-dense dotted structures are dispersed in the fibrillar matrix (EM-2)



Ultrastructure of idiopathic premacular membrane seen in an adult male patient with myotonic dystrophy. A thin laminated membranous structure is formed. In addition to electron-dense lineated layers, thick-stained fibrinous material is deposited in the fibrillar matrix (EM-3)



Ultrastructure of idiopathic premacular membrane seen in an adult male patient with myotonic dystrophy. A thin laminated membranous structure is formed. Electron-dense lineated layers and thick-stained fibrinous layer are lamellated (EM-4)