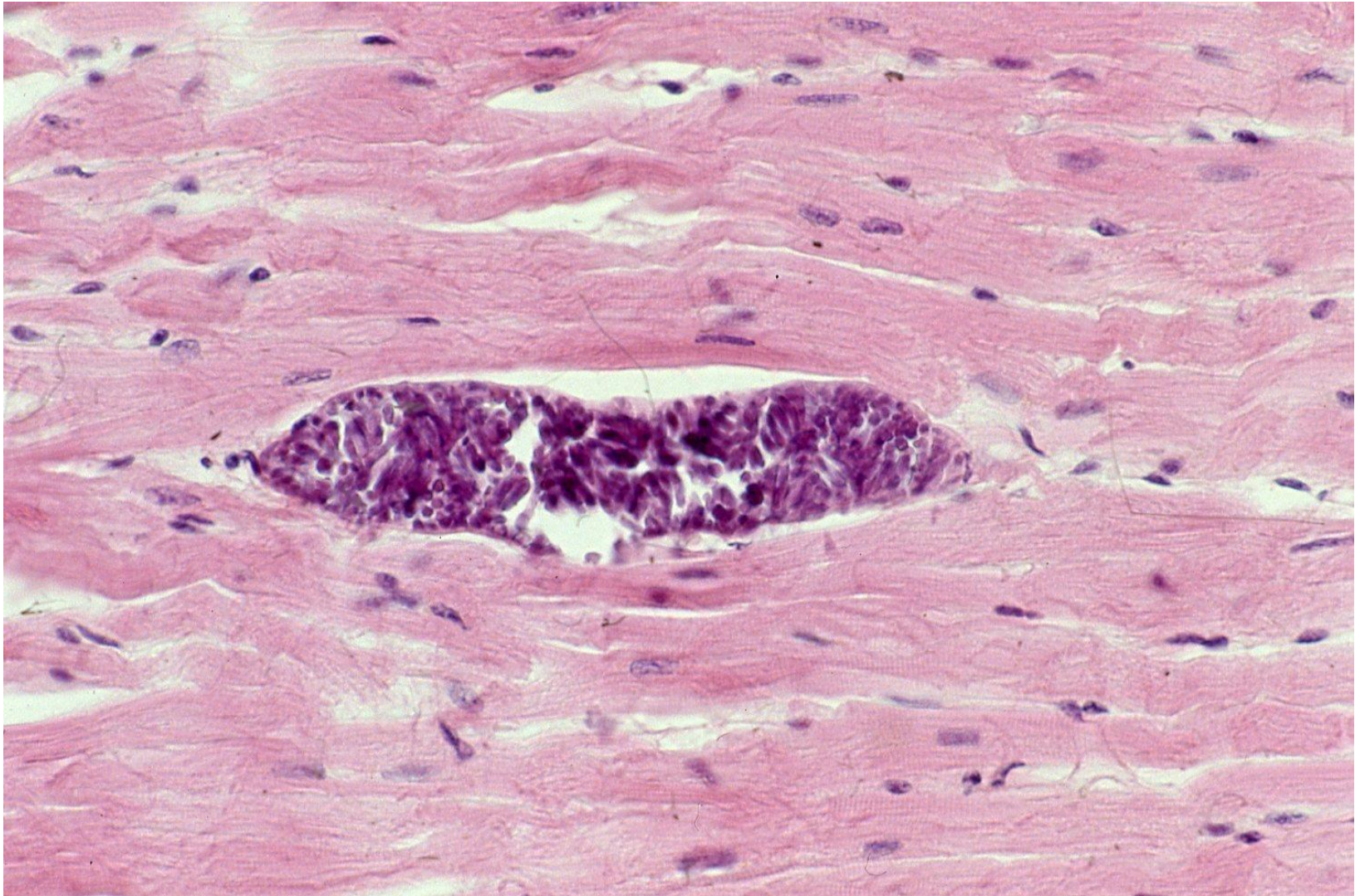
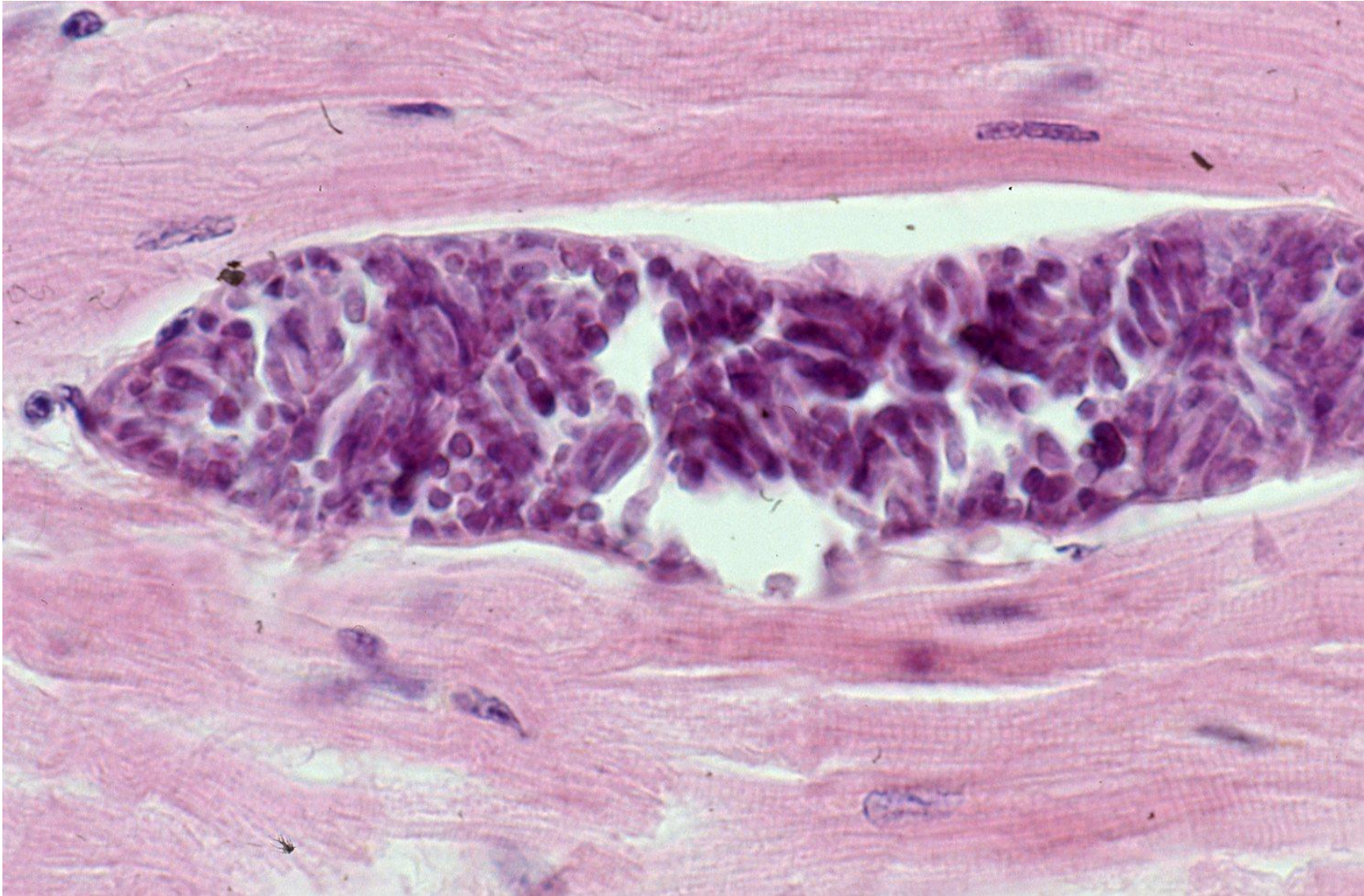


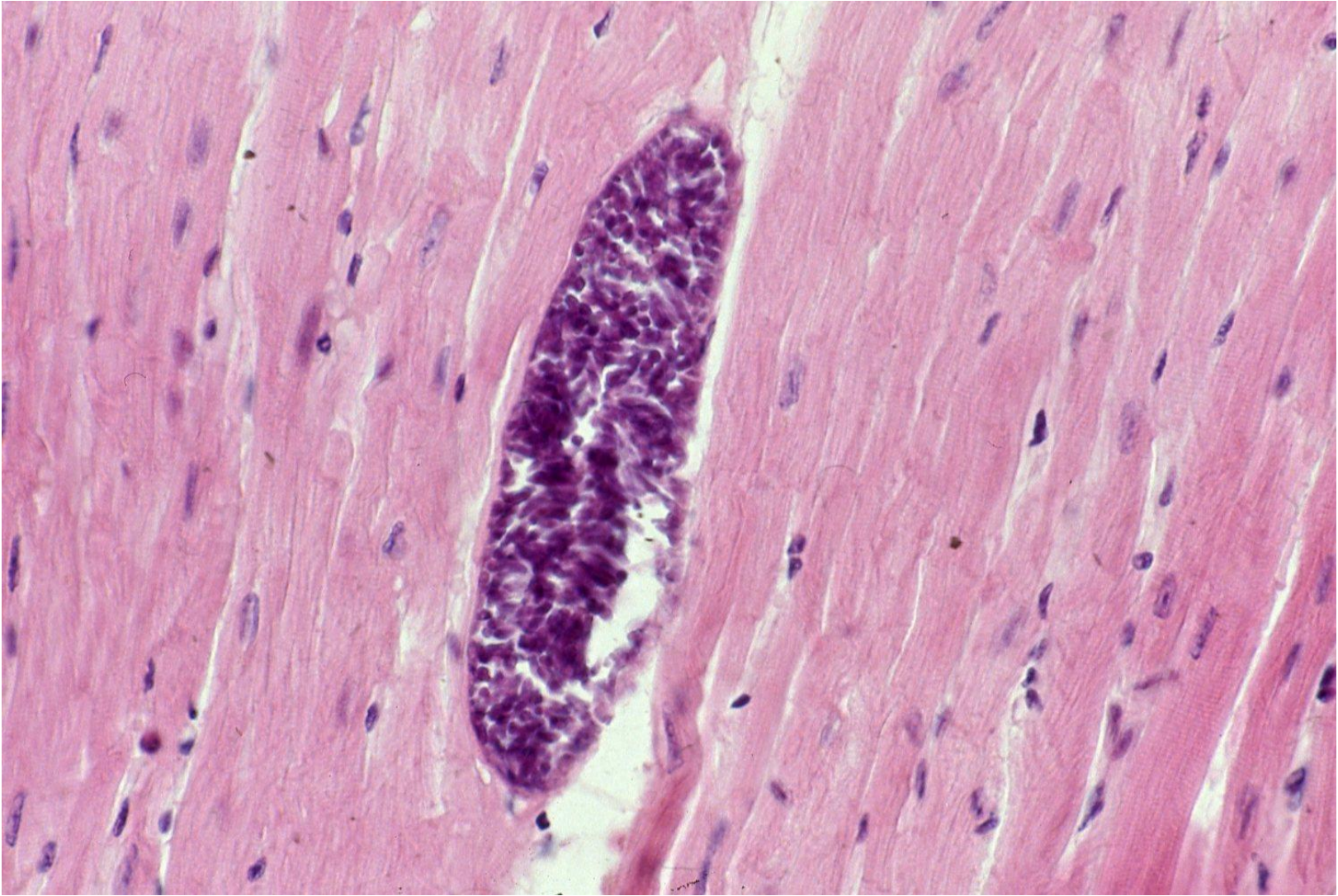
Sarcocystis hominis infection

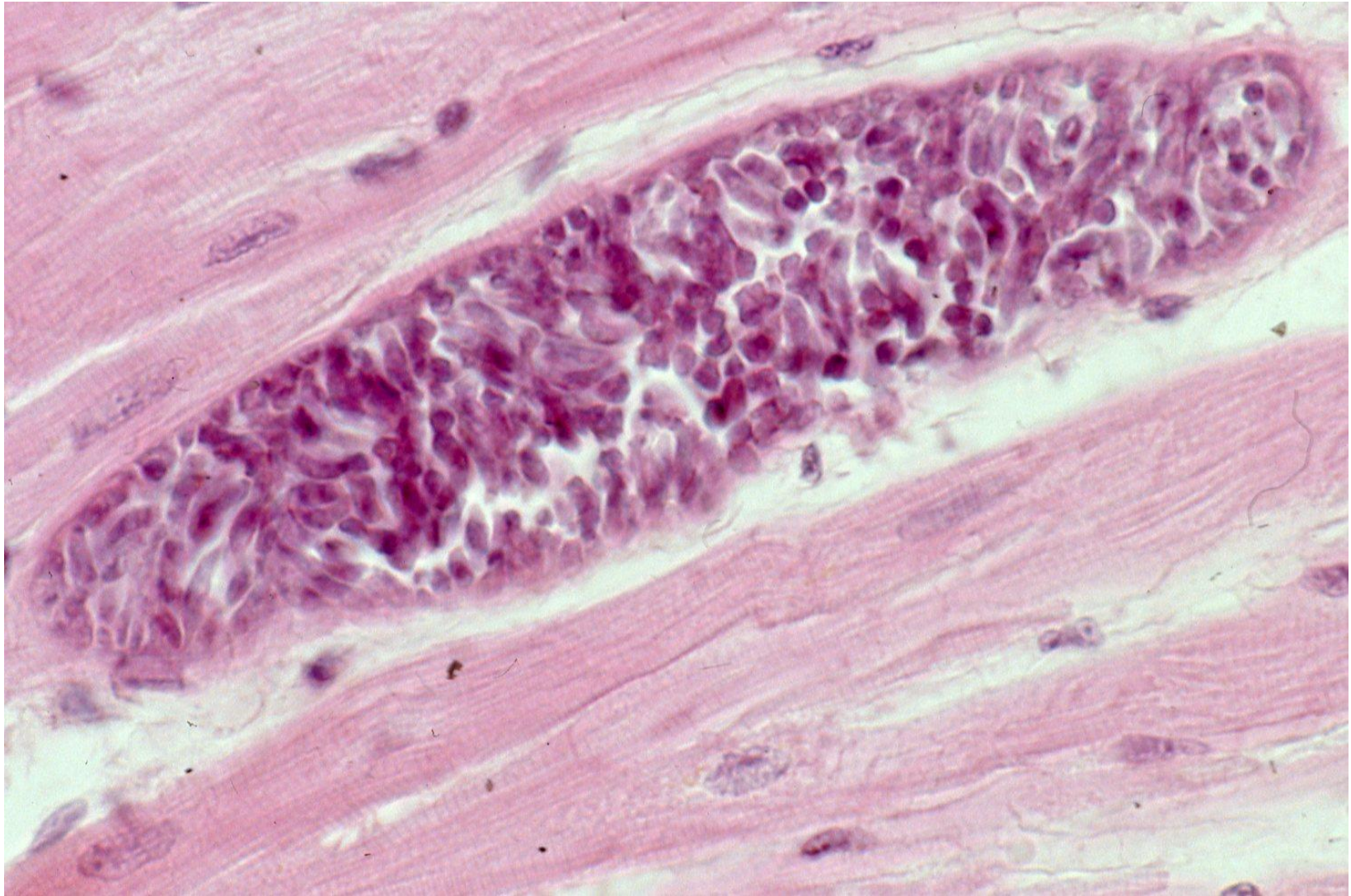
Sarcocystis is a genus of protozoan parasites (apicomplexan), with many species infecting mammals, reptiles, birds and insects. About 130 species are included in this genus. One representative species is *S. hominis*. The lifecycle requires two host species: a definitive host and an intermediate host. The definitive host usually does not show any symptoms of infection. Sarcocysts containing numbers of bradyzoites and metrocytes are seen principally in the striated muscles, heart or lymph nodes. In humans, intestinal infection may be common, but extraintestinal sarcocystosis is rare. The cysts in human striated muscle belong to a single species, *S. lindemanni*. Clinical human cases may manifest fever, myalgias, bronchospasm, pruritic rashes, lymphadenopathy and subcutaneous nodules with eosinophilia. Cattle heart muscles infected with *S. hominis* are presented herein.

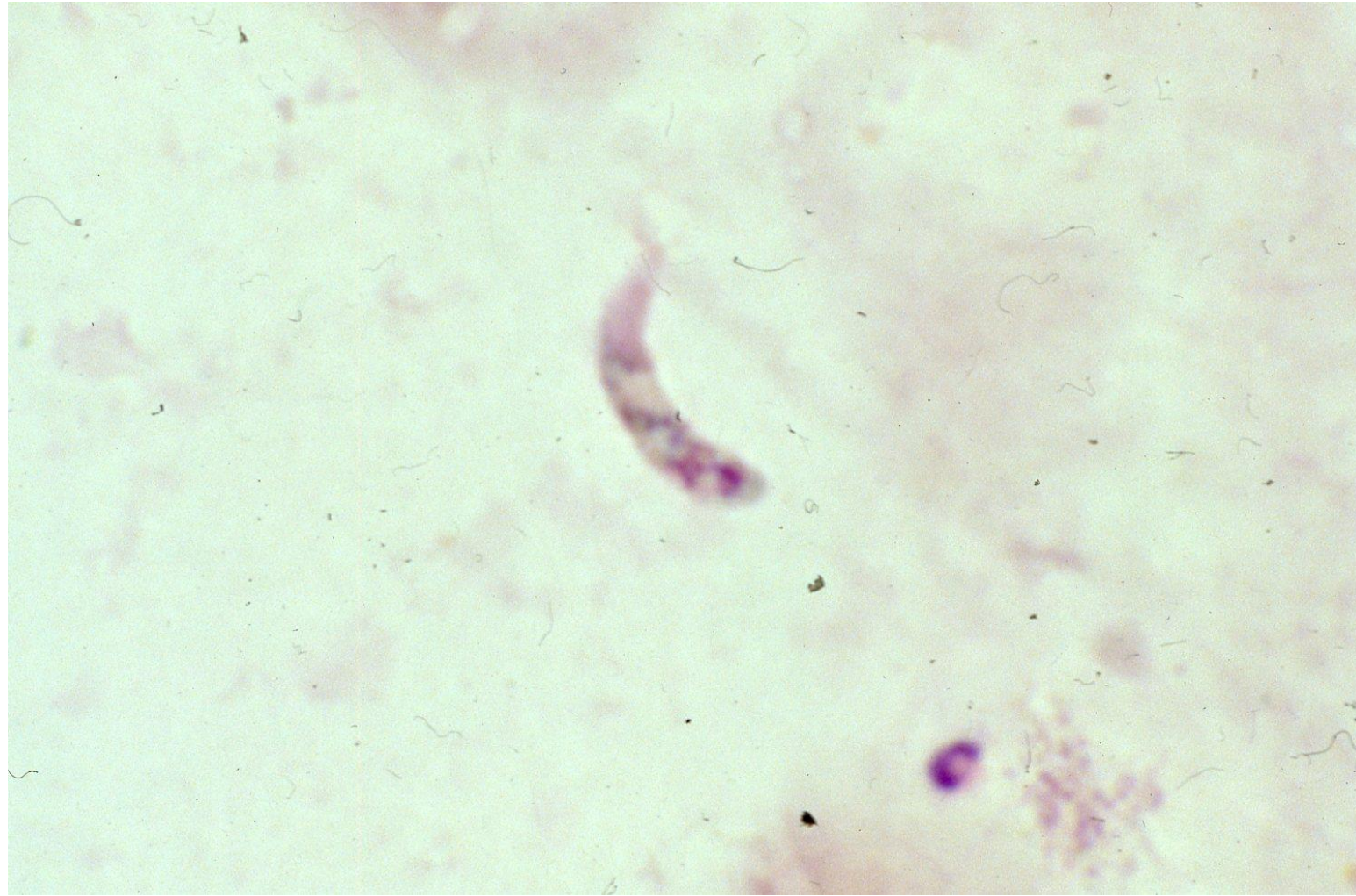
Ref.: Shams M, et al. Molecular epidemiology, species distribution, and zoonotic importance of the neglected meat-borne pathogen *Sarcocystis* spp. in cattle (*Bos taurus*): a global systematic review and meta-analysis. *Acta Parasit* 2022; 67: 1055–1072. doi: 10.1007/s11686-022-00563-z





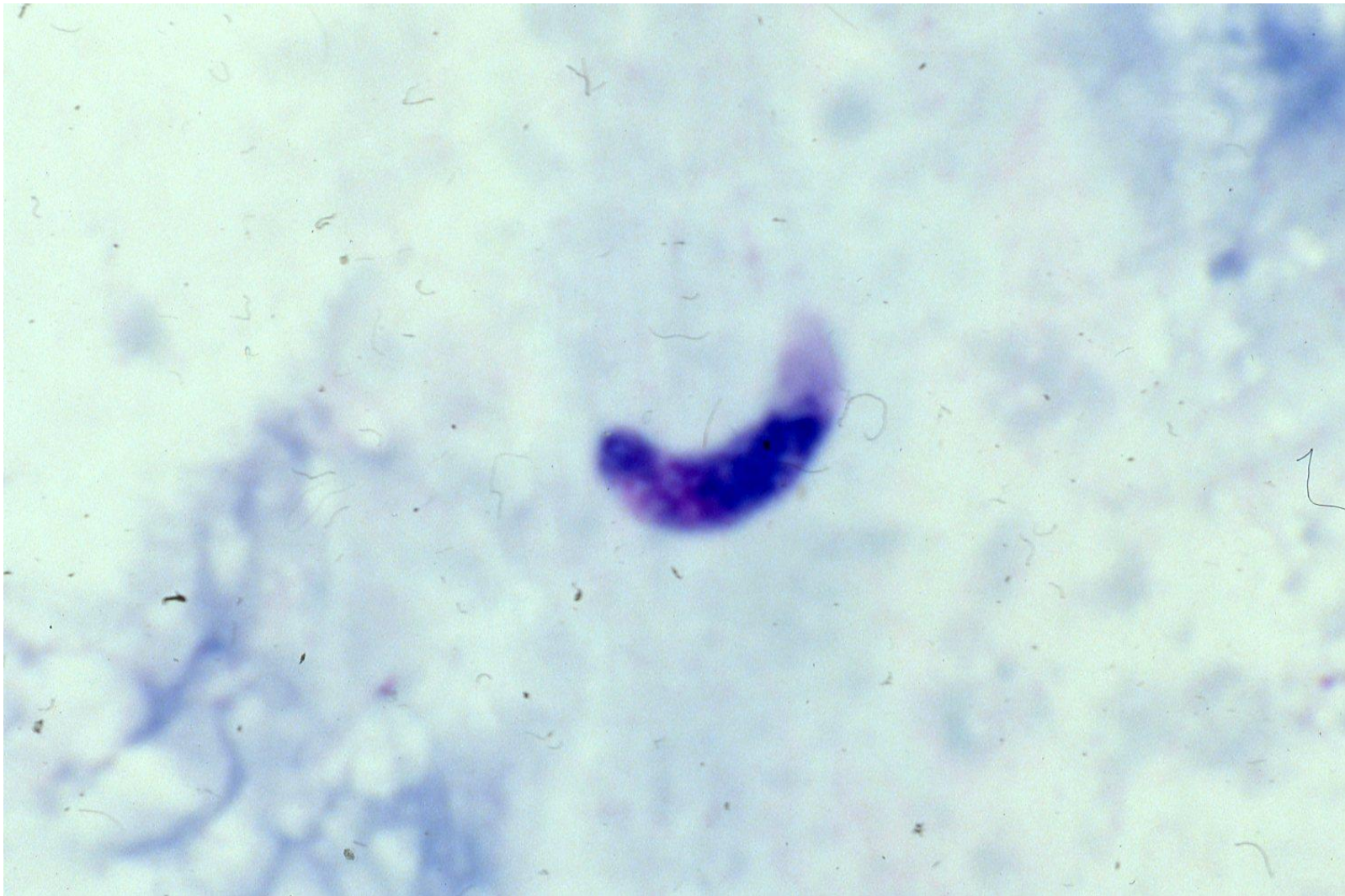


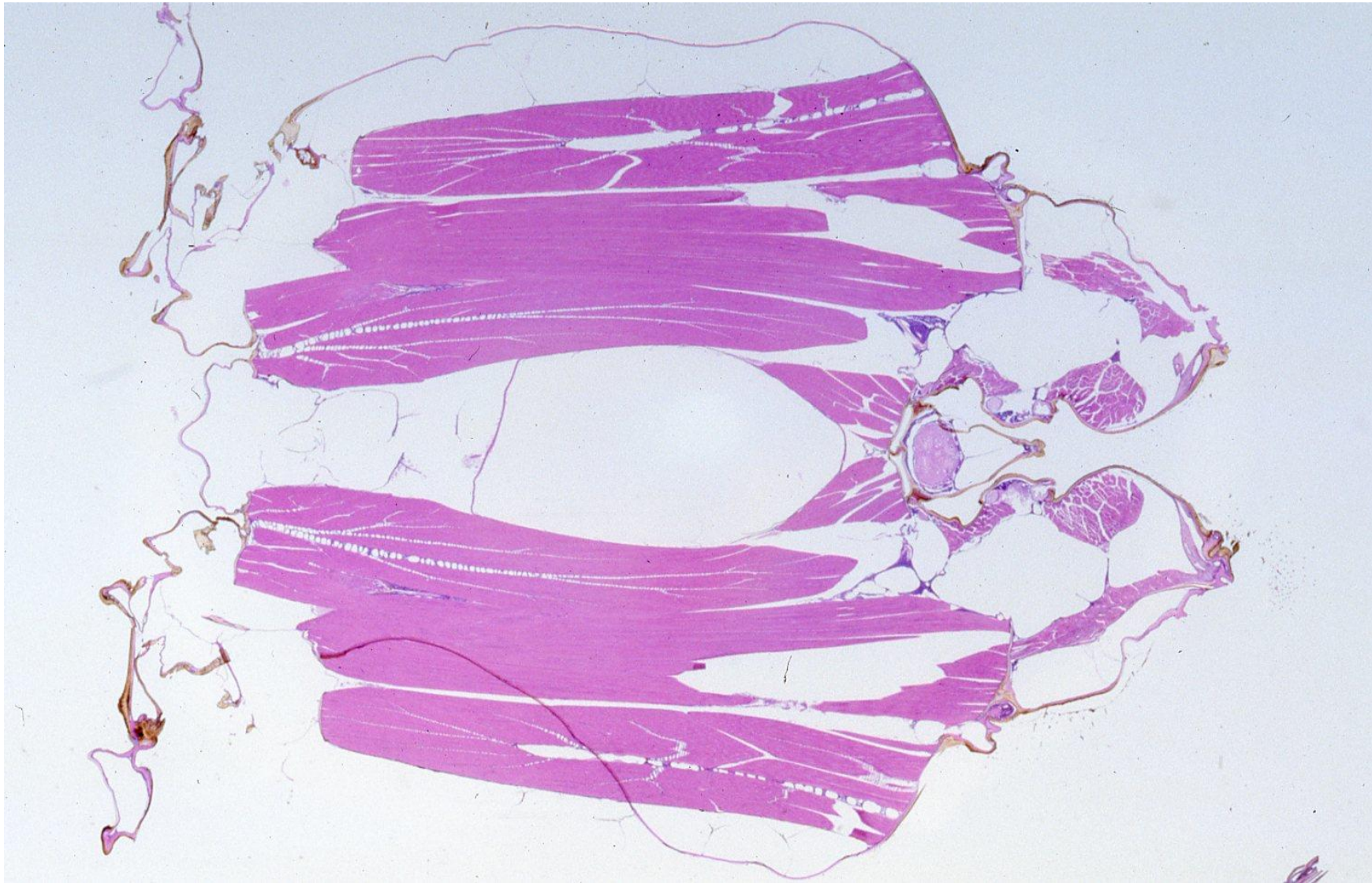




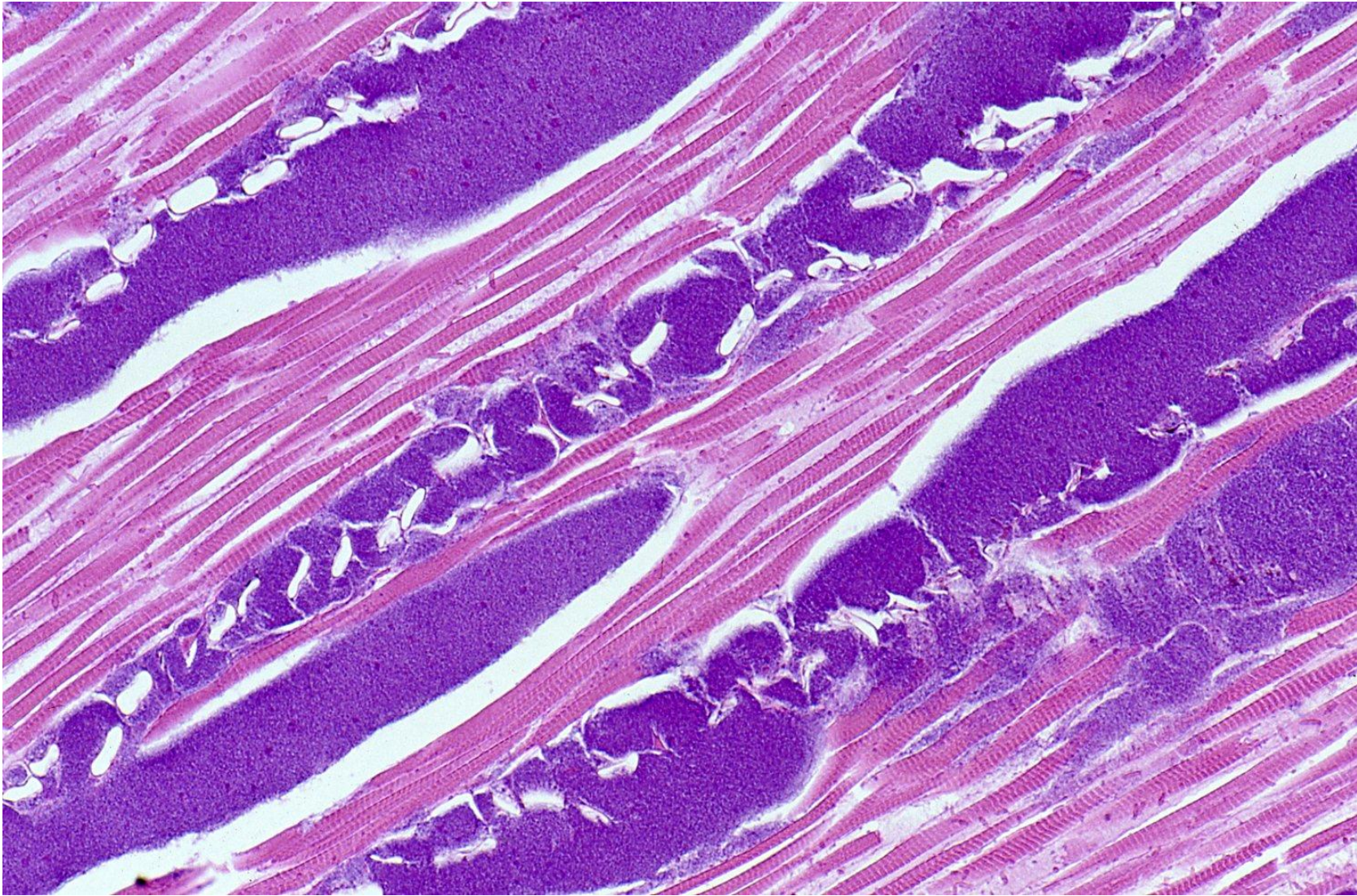




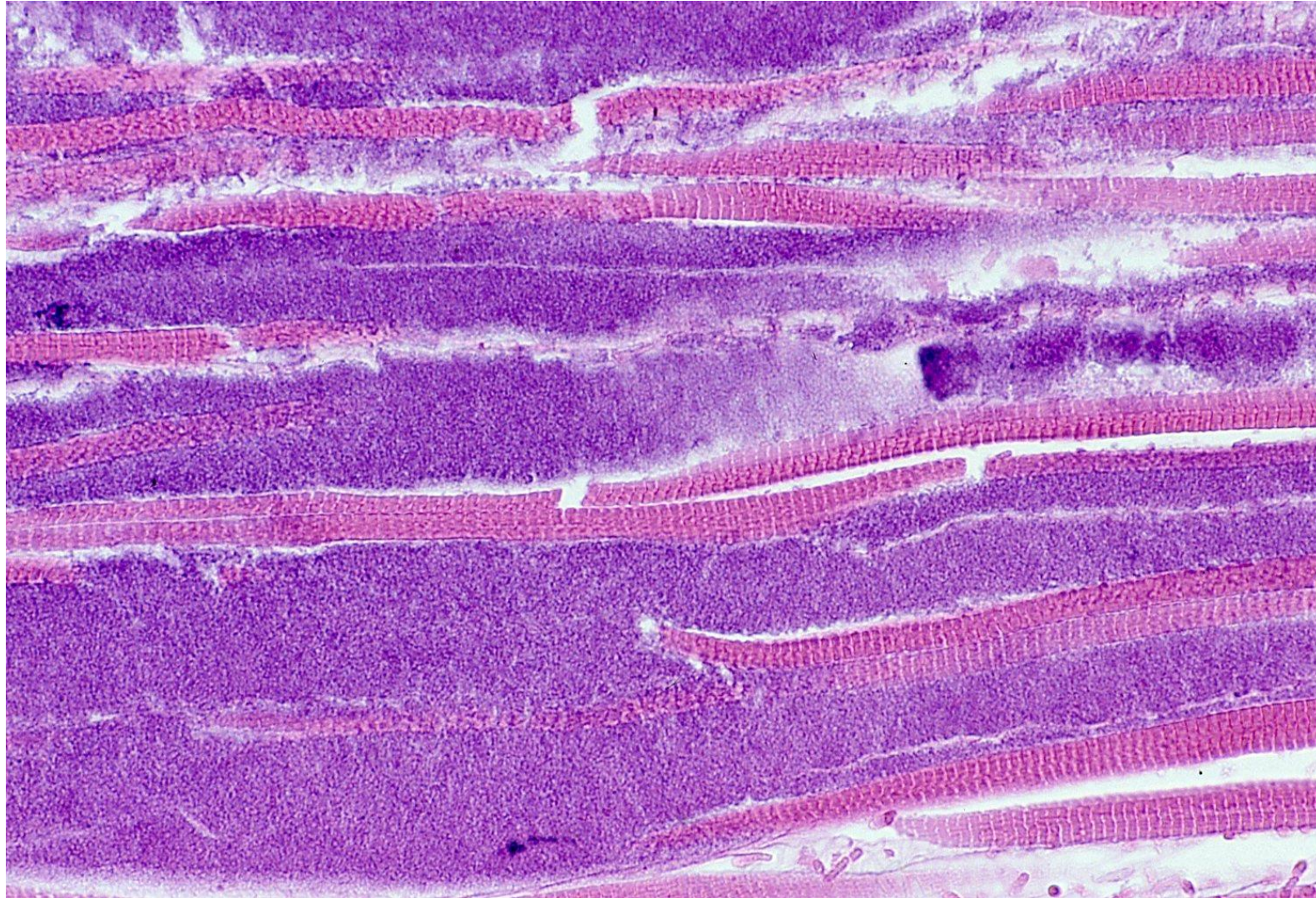




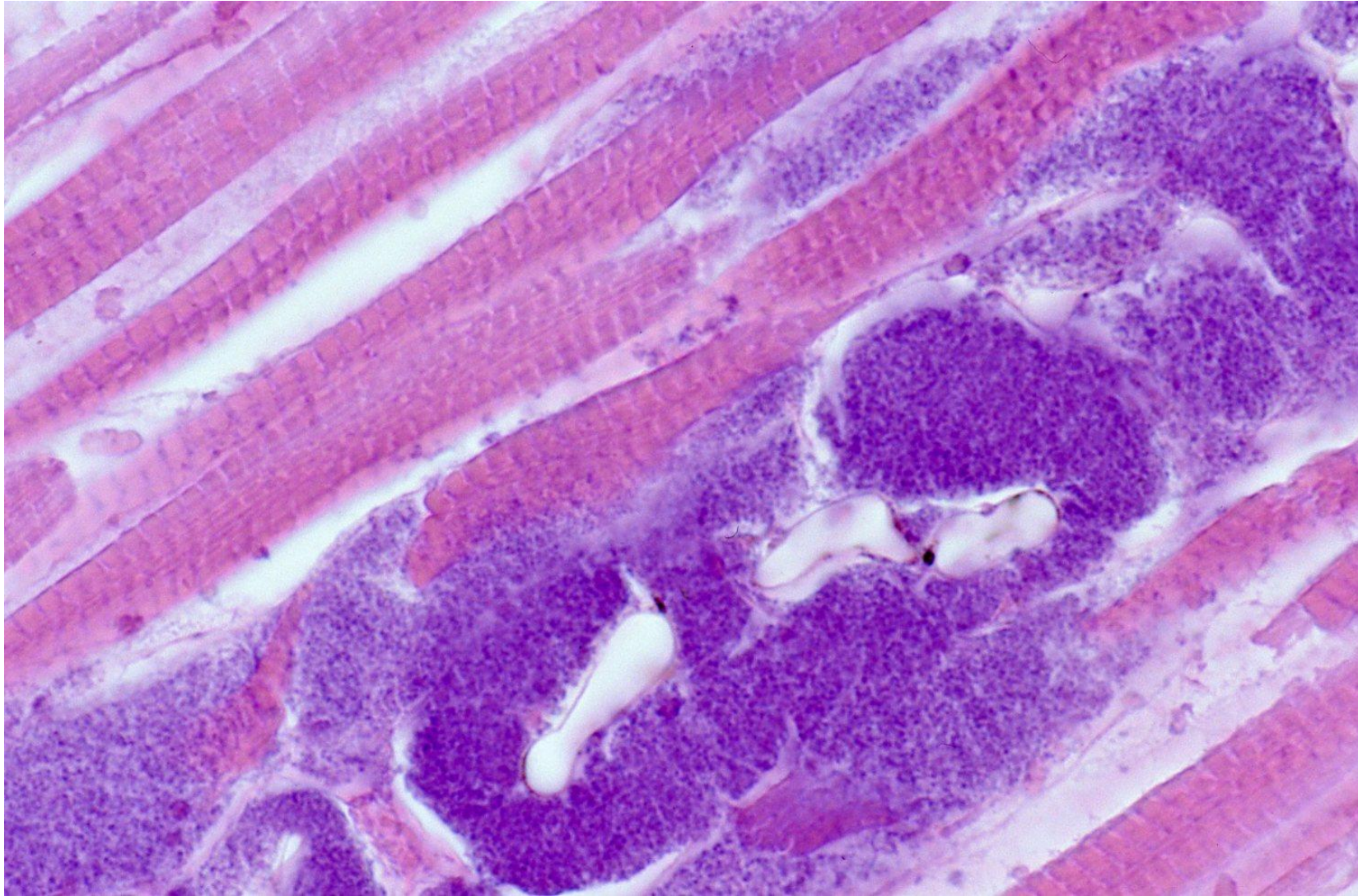
Anotogaster sieboldii is a large (70-80 mm-sized) dragonfly living in Japan. The longitudinal section of the chest reveals well-developed and symmetrical striated muscles. H&E-1



The striated muscle cells of *Anotogaster sieboldii* (a large dragonfly) show massive infection of *Sarcocystis* protozoa. It seemed that the dragonfly flew normally. H&E-2



The striated muscle cells of *Anotogaster sieboldii* (a large dragonfly) show massive infection of *Sarcocystis* protozoa. It seemed that the dragonfly flew normally. H&E-3



The striated muscle cells of *Anotogaster sieboldii* (a large dragonfly) show massive infection of *Sarcocystis* protozoa. It seemed that the dragonfly flew normally. H&E-23