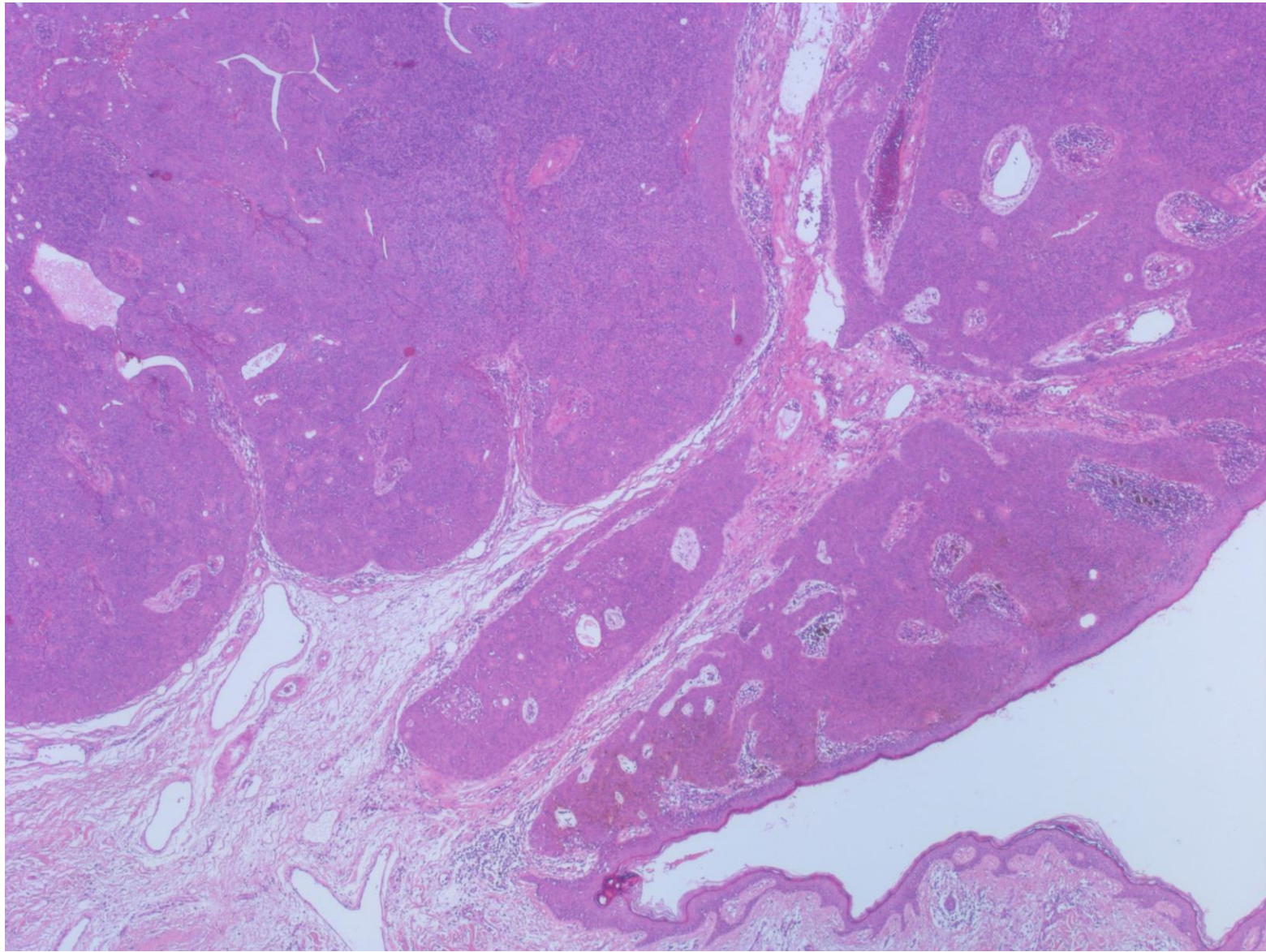


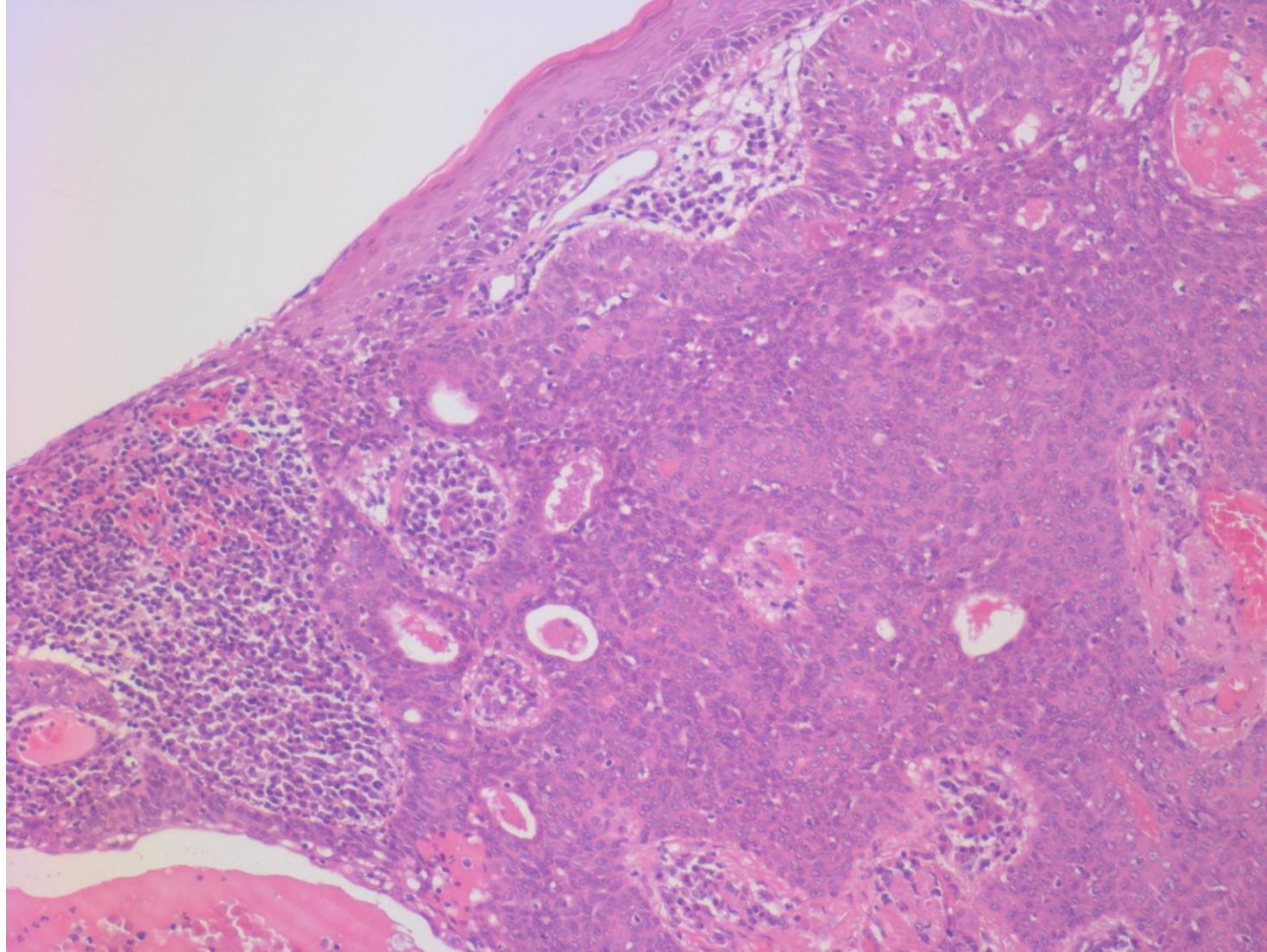
Apocrine poroma

Apocrine poroma microscopically consists of poroma-like, sebaceous and follicular epithelial components. These components share the common embryologic origin of the folliculosebaceous-apocrine unit. In anastomosing trabeculae, ductal differentiation with a well developed eosinophilic cuticle is observed.

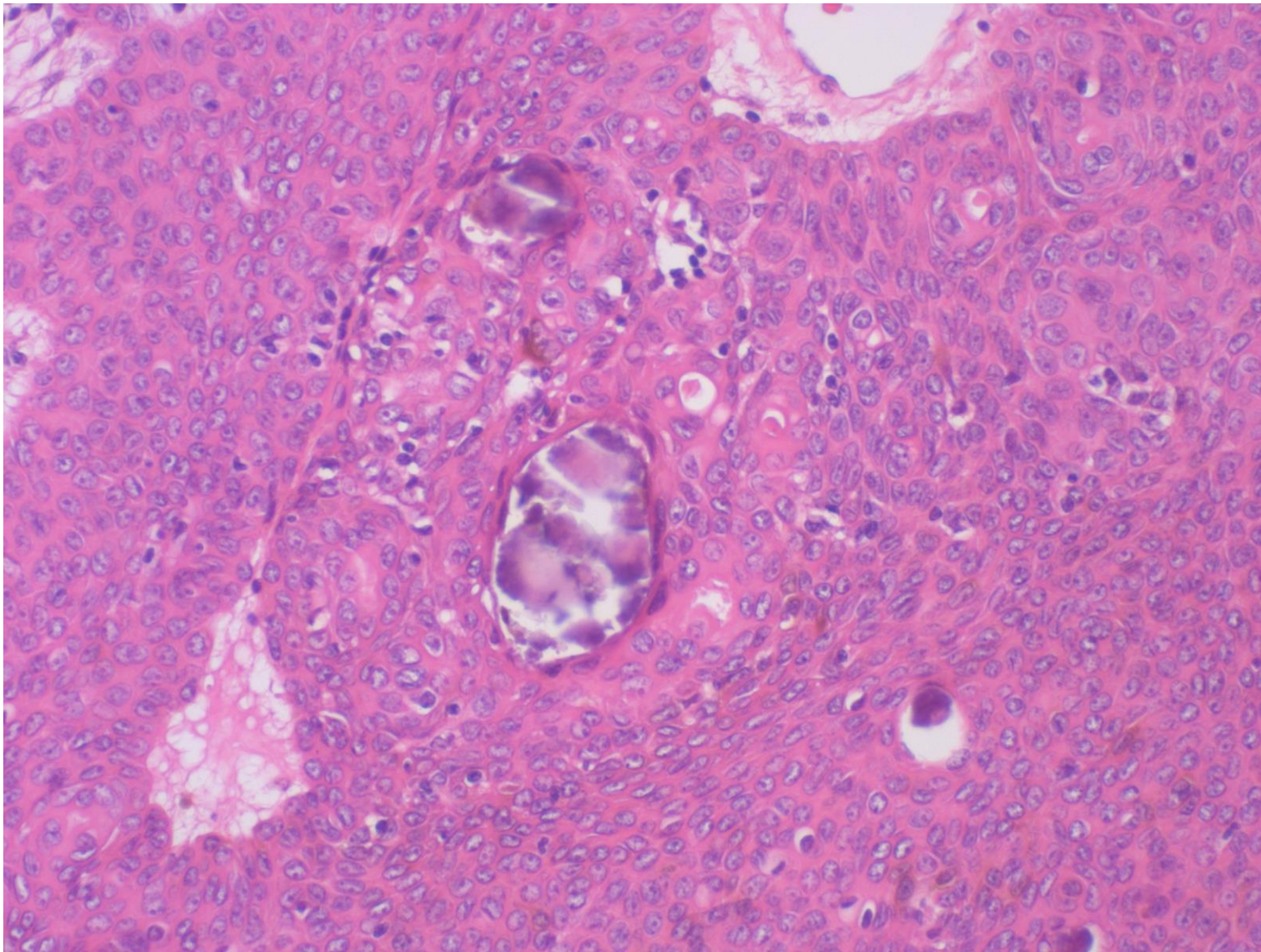
Ref.: Kamiya H, et al. "Apocrine" poroma: review of the literature and case report. *J Cutan Pathol* 2001; 28(2): 101-104.
doi: 10.1034/j.1600-0560.2001.280207.x



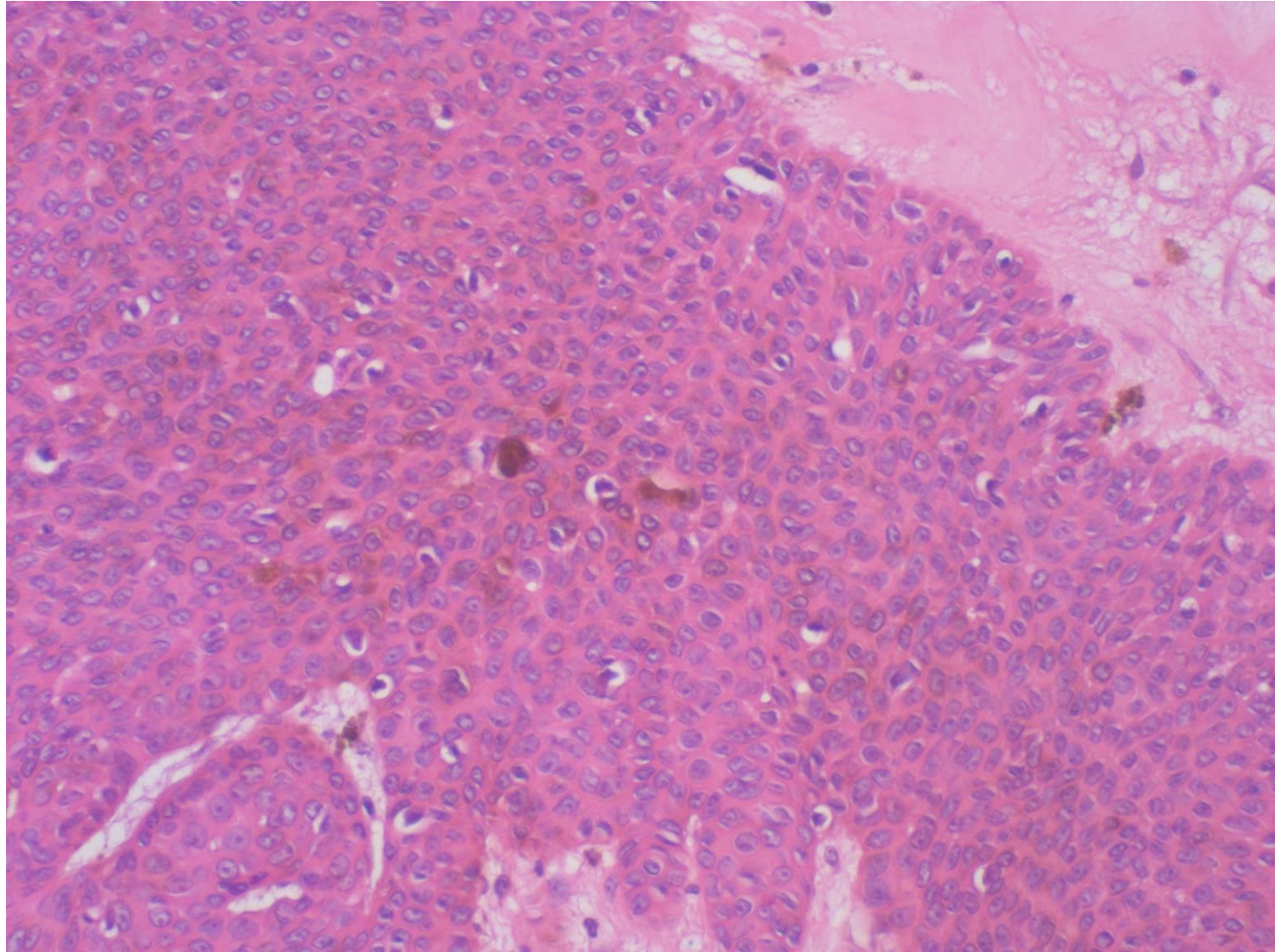
Apocrine poroma. A 61 y-o female patient complained of a neck tumor gradually growing for 10 years. The tumor was excised. The solid tumor component focally forming a trabecular structure is continuous to the overlying epidermis (H&E-1).



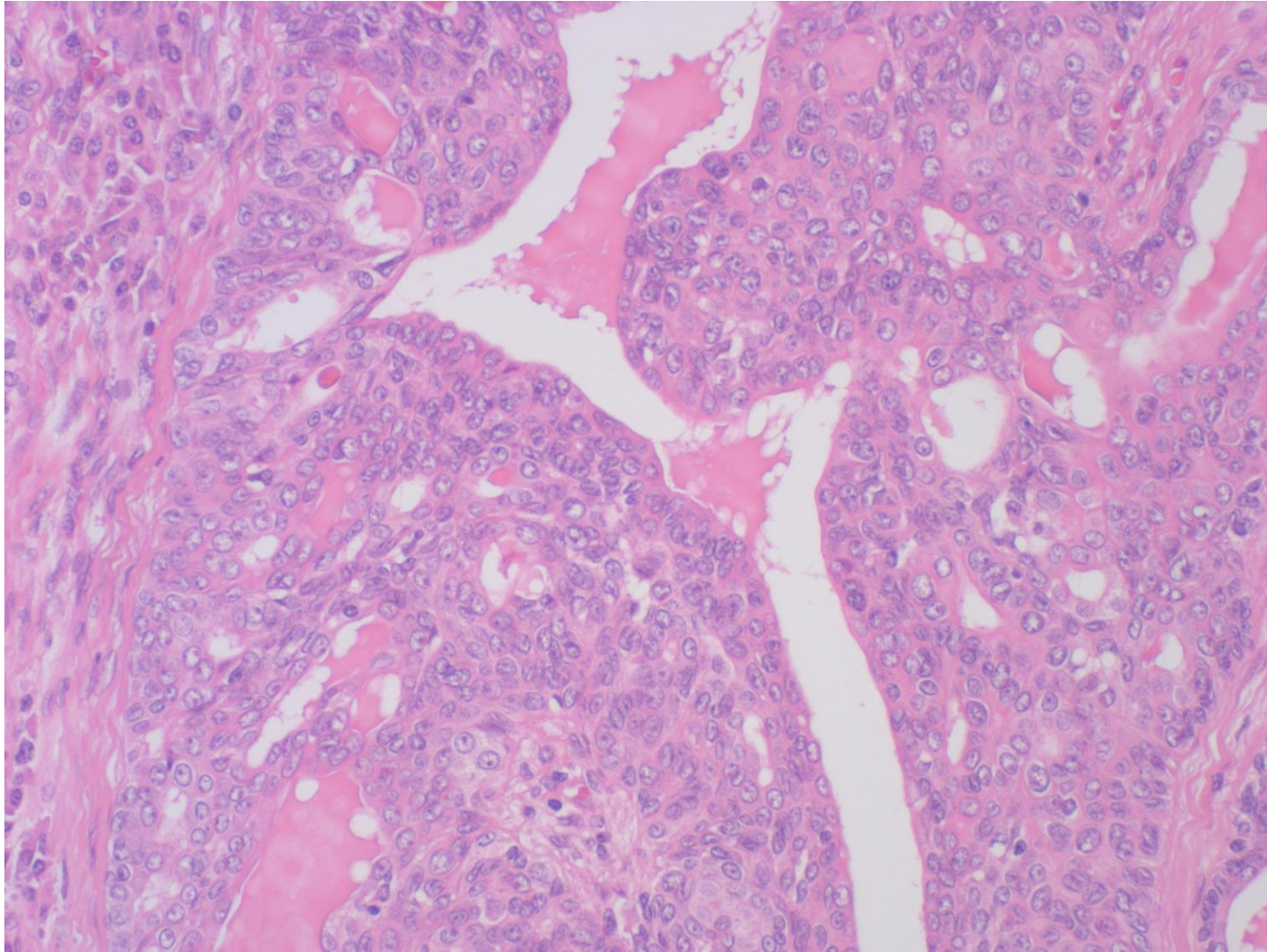
Apocrine poroma. A 61 y-o female patient complained of a neck tumor gradually growing for 10 years. The tumor was excised. Glandular spaces are focally seen in the solid tumor component continuous to the overlying epidermis (H&E-2).



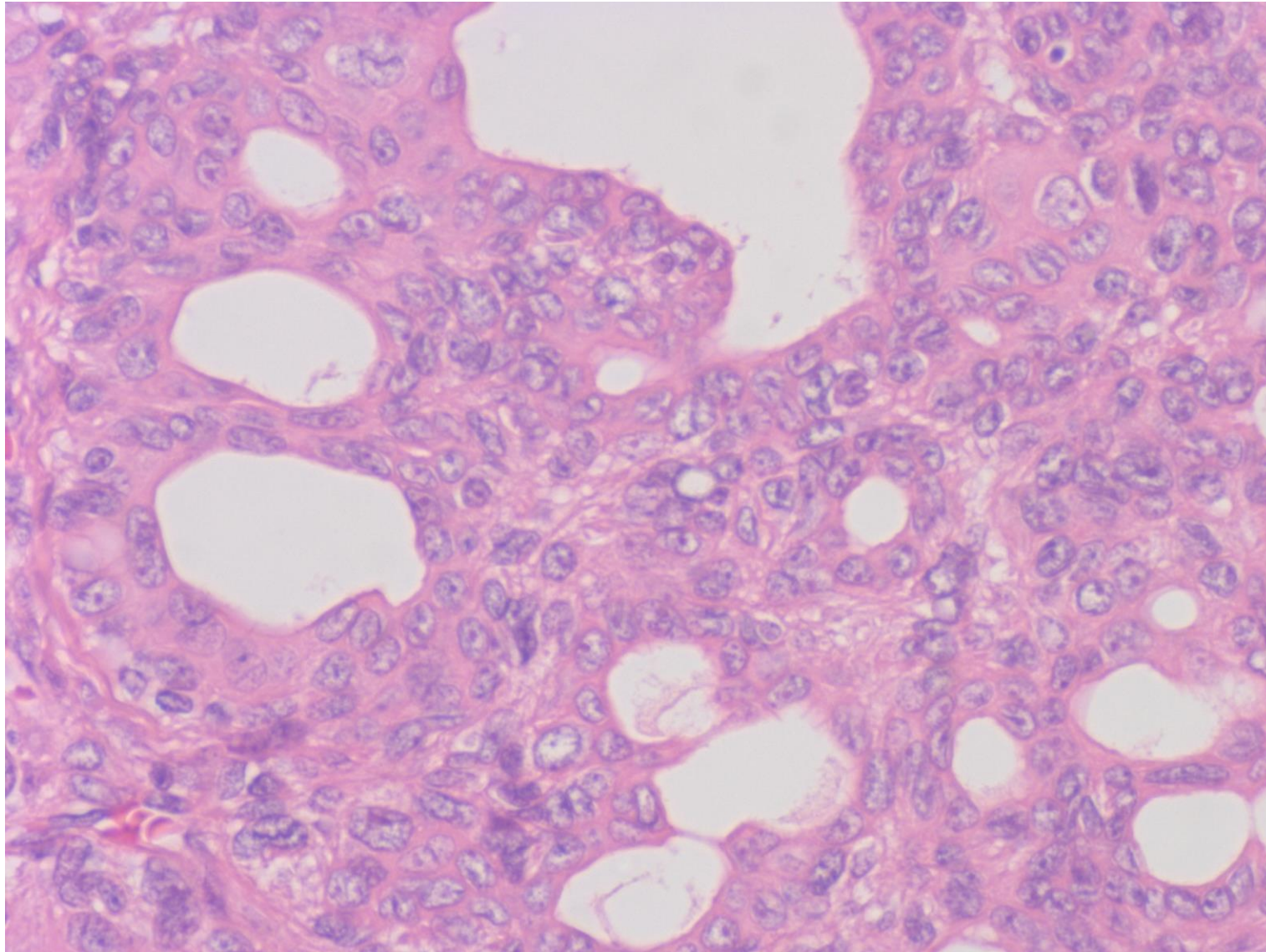
Apocrine poroma. A 61 y-o female patient complained of a neck tumor gradually growing for 10 years. The tumor was excised. Microcalcifications are focally seen in the solid tumor component (H&E-3).



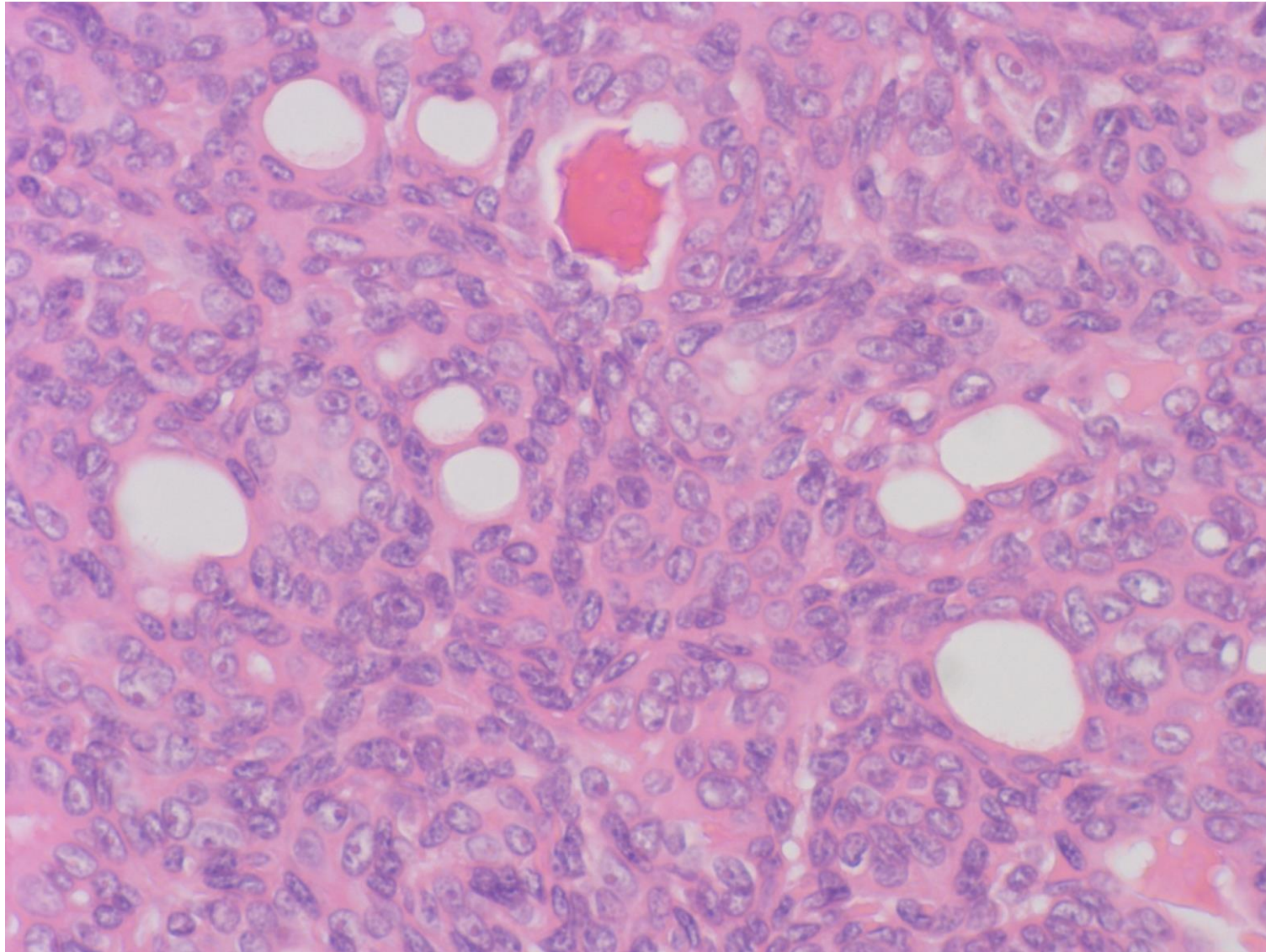
Apocrine poroma. A 61 y-o female patient complained of a neck tumor gradually growing for 10 years. The tumor was excised. Melanosis is focally seen in the solid tumor component (H&E-4).



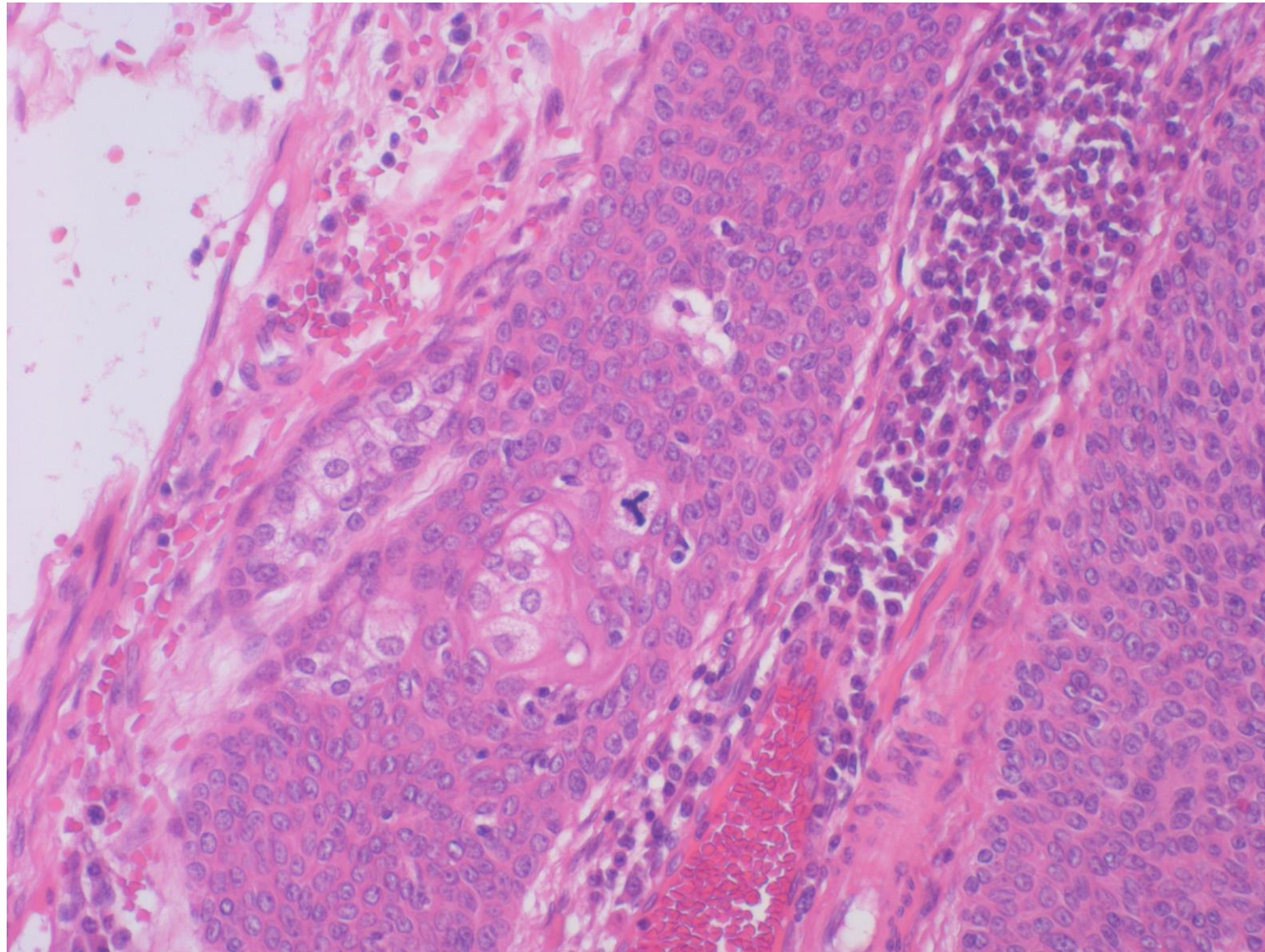
Apocrine poroma. A 61 y-o female patient complained of a neck tumor gradually growing for 10 years. The tumor was excised. The glandular spaces are lined by apocrine-like cells with eosinophilic cytoplasm. The lumen contains eosinophilic excretions (H&E-5).



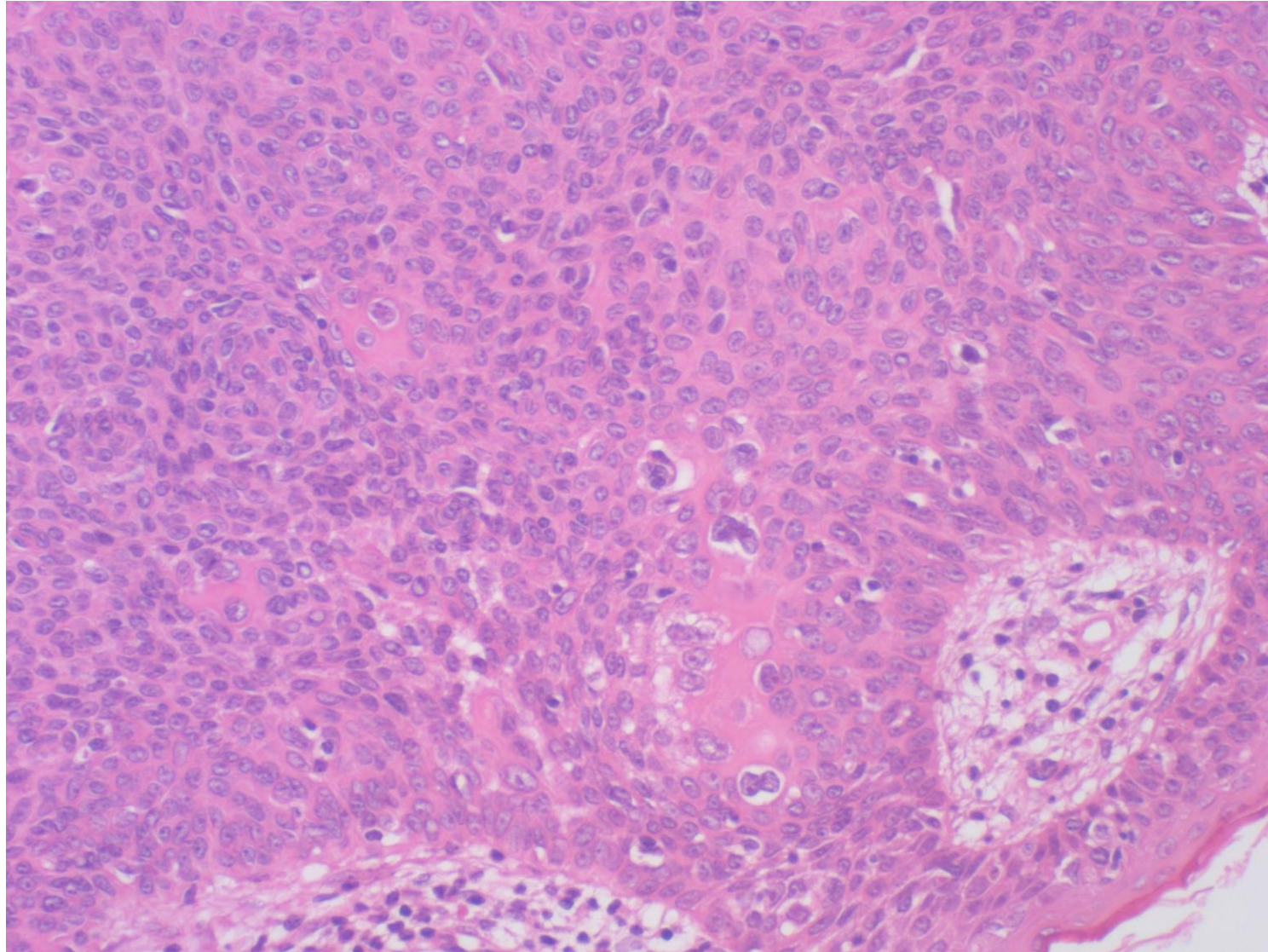
Apocrine poroma. A 61 y-o female patient complained of a neck tumor gradually growing for 10 years. The tumor was excised. The glandular spaces are lined by apocrine-like cells with eosinophilic cytoplasm (H&E-6).



Apocrine poroma. A 61 y-o female patient complained of a neck tumor gradually growing for 10 years. The tumor was excised. The glandular spaces are lined by apocrine-like cells with eosinophilic cytoplasm. The lumen contains eosinophilic excretions (H&E-7).



Apocrine poroma. A 61 y-o female patient complained of a neck tumor gradually growing for 10 years. The tumor was excised. Sebaceous differentiation is focally observed. An atypical mitosis is discerned (H&E-8).



Apocrine poroma. A 61 y-o female patient complained of a neck tumor gradually growing for 10 years. The tumor was excised. Follicular squamous differentiation is focally observed. Anisonucleosis is discerned (H&E-9).