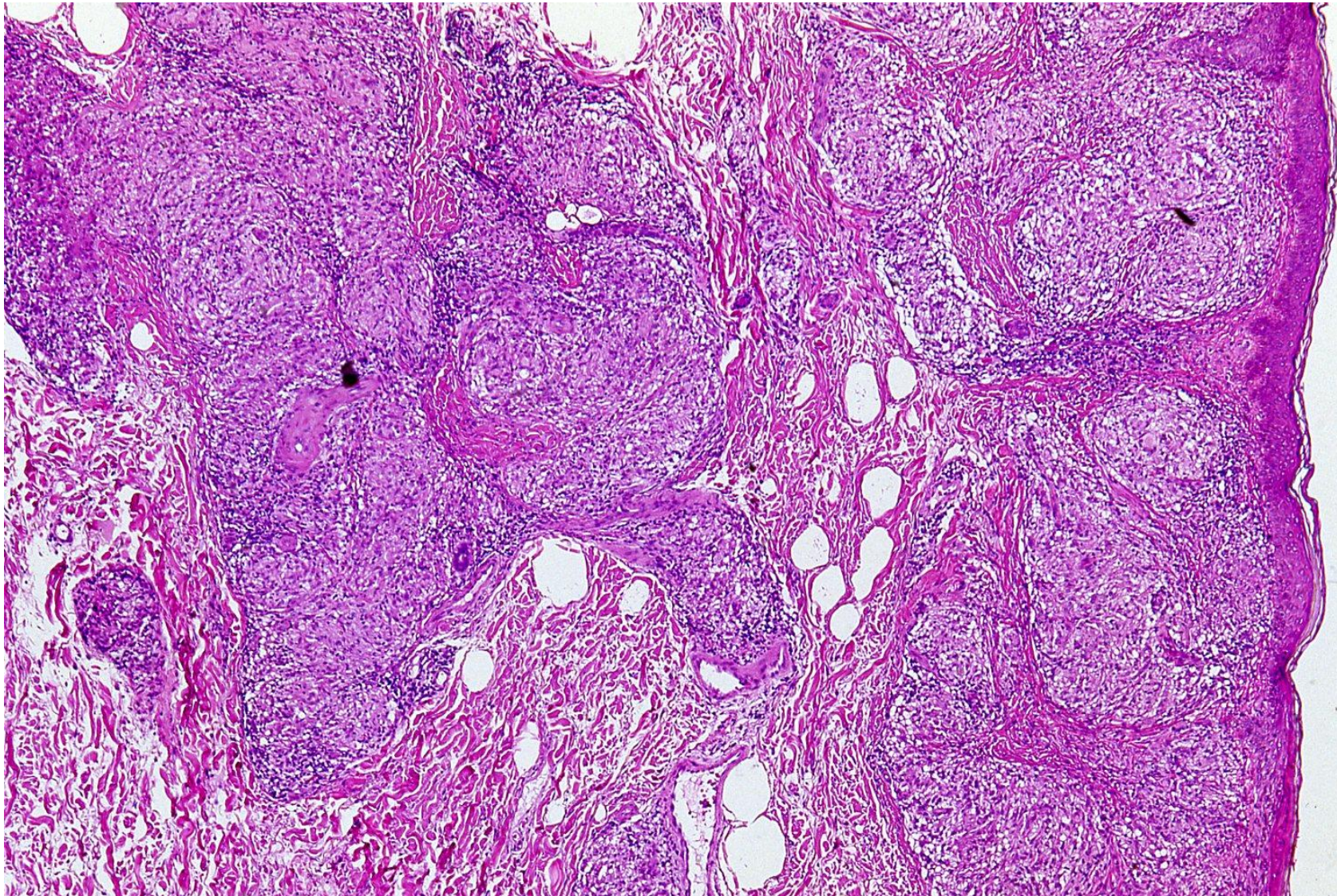


Tuberculoid leprosy

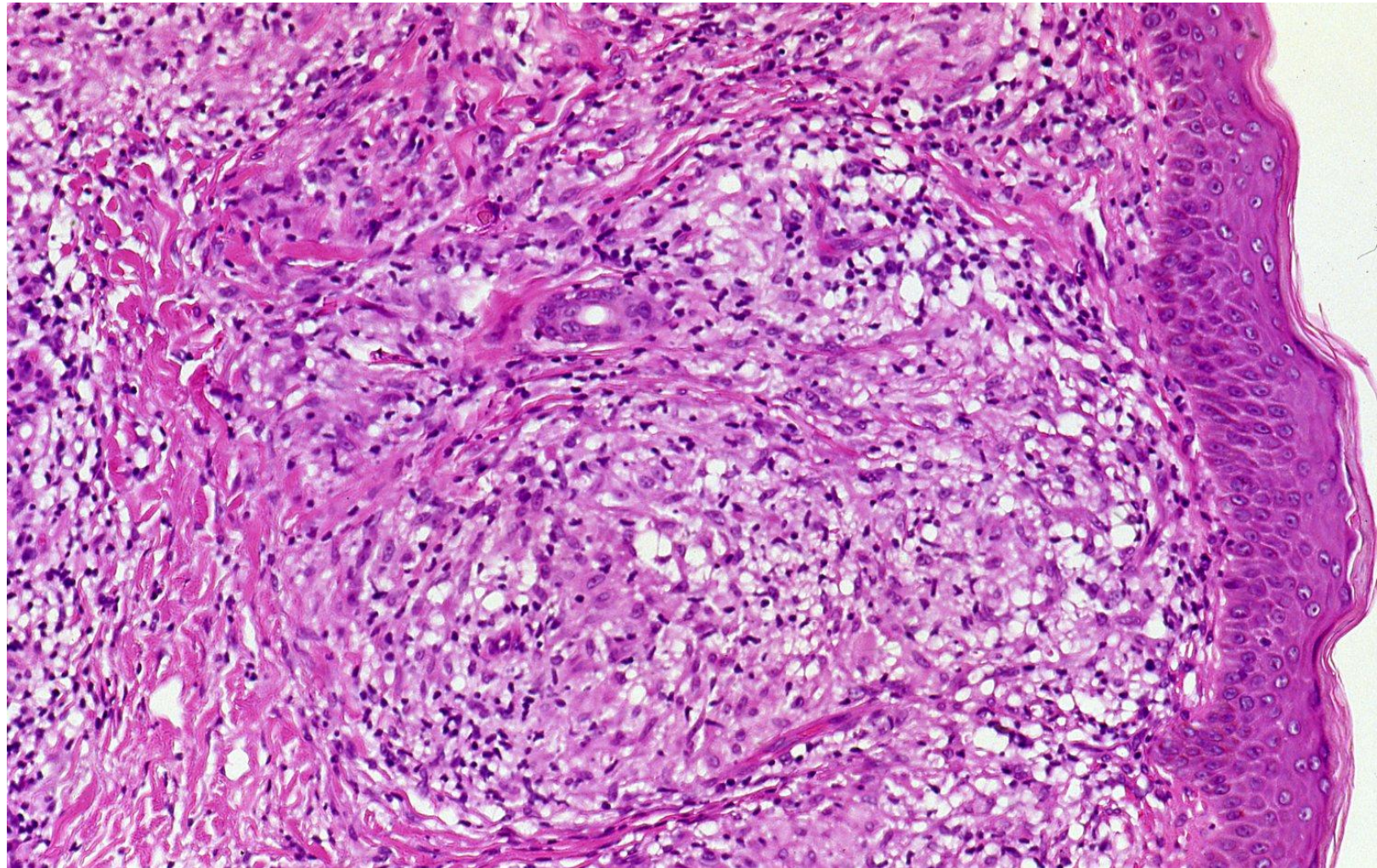
Leprosy patients show a spectrum of clinical manifestations extending from the paucibacillary form (tuberculoid leprosy) to the multibacillary form (lepromatous leprosy). In the tuberculoid leprosy, the skin lesions showing epithelioid granuloma formation are few in number, and are sharply demarcated. Peripheral nerve involvement is pronounced. Unlike lepromatous leprosy, the lepromin test is positive.



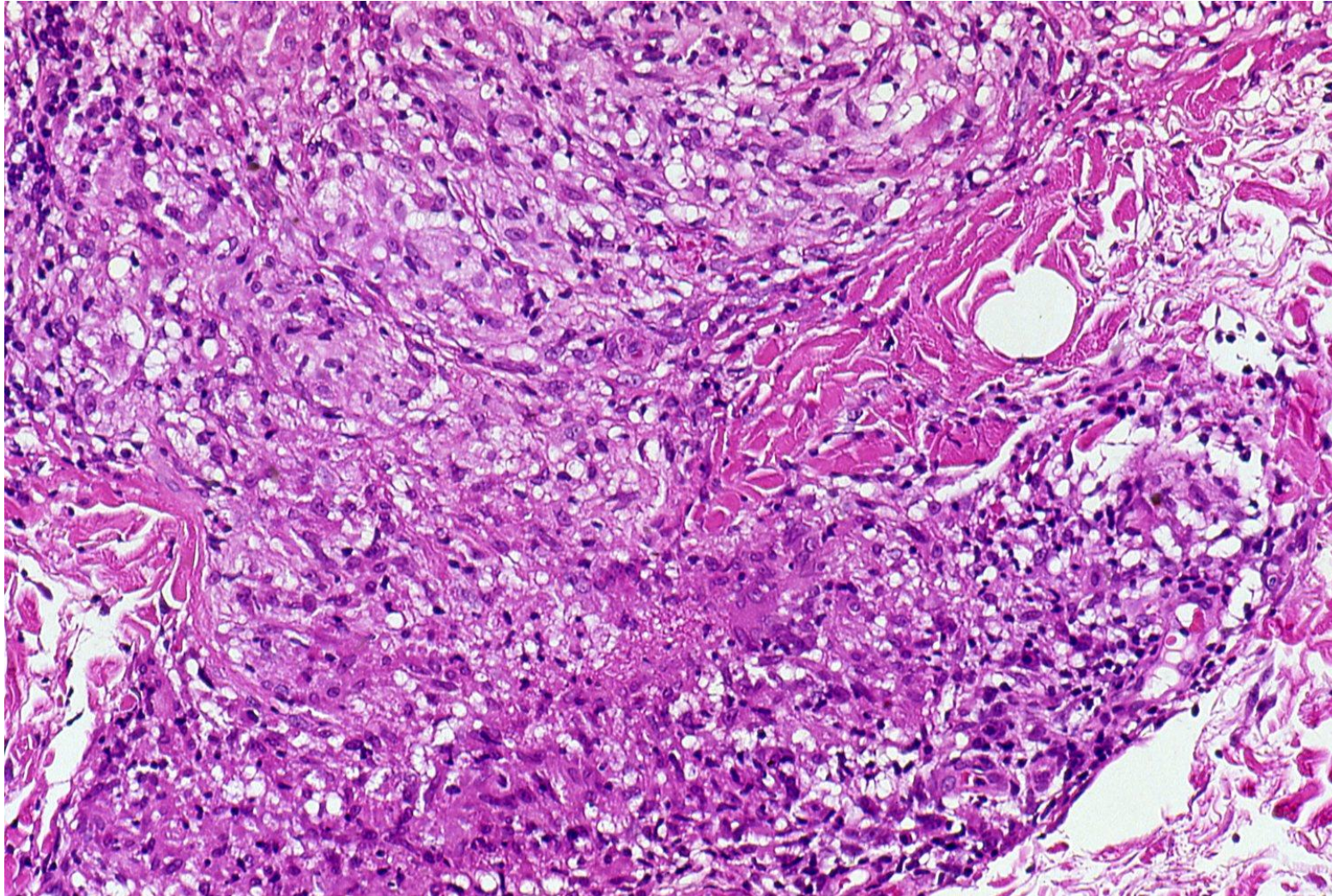
Skin lesions of tuberculoid leprosy. Relatively localized infiltration is associated with depigmentation and alopecia (left). Enlargement of a nerve fascicle on the neck is evident (center). Erythematous swelling of the right middle finger is seen (right).



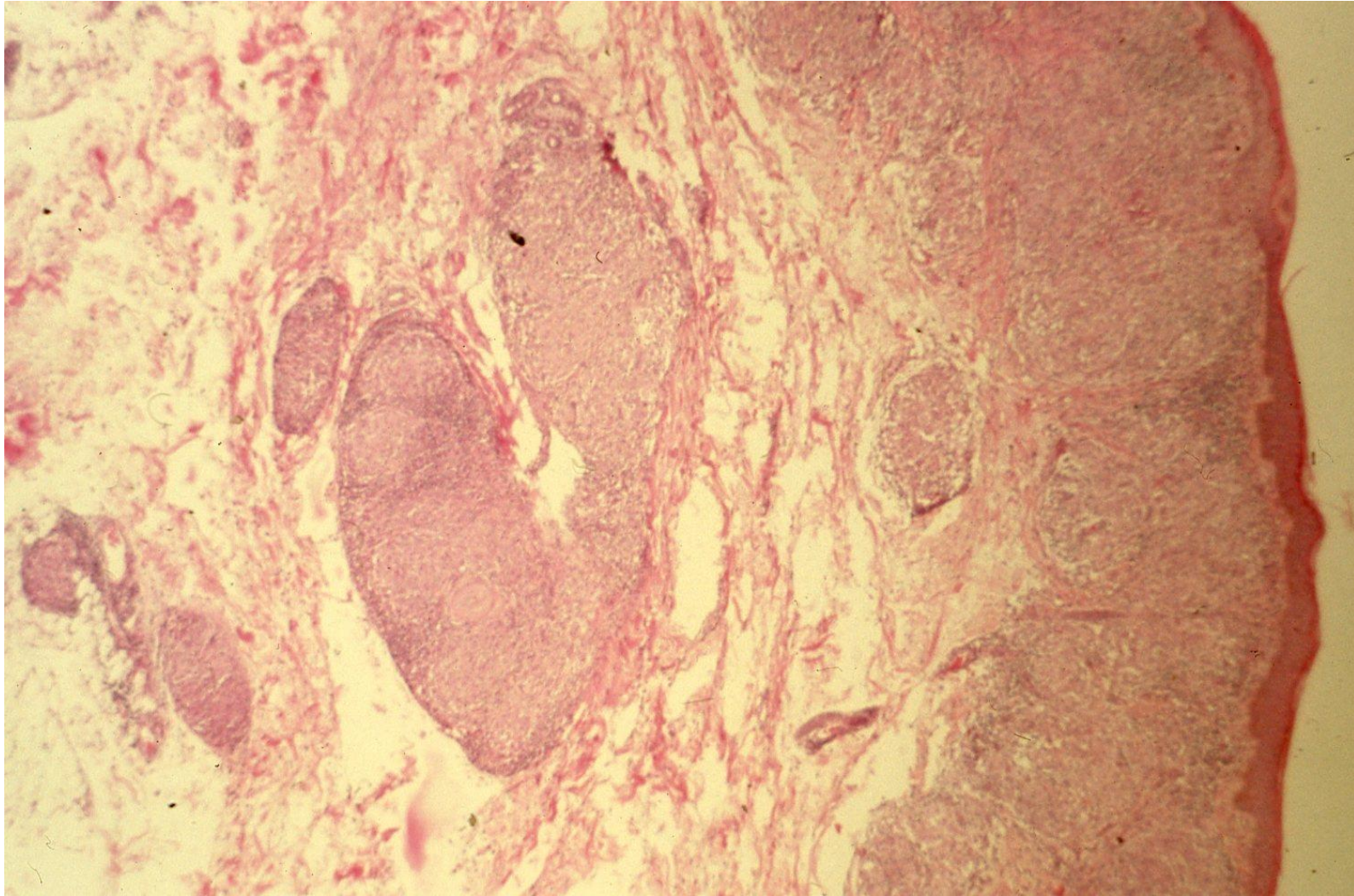
Skin biopsy of tuberculoid leprosy. Epithelioid granulomas are clustered in the dermis. The granulomas are seen just beneath the epidermis. Acid-fat staining is negative (paucibacillary leprosy). H&E-1



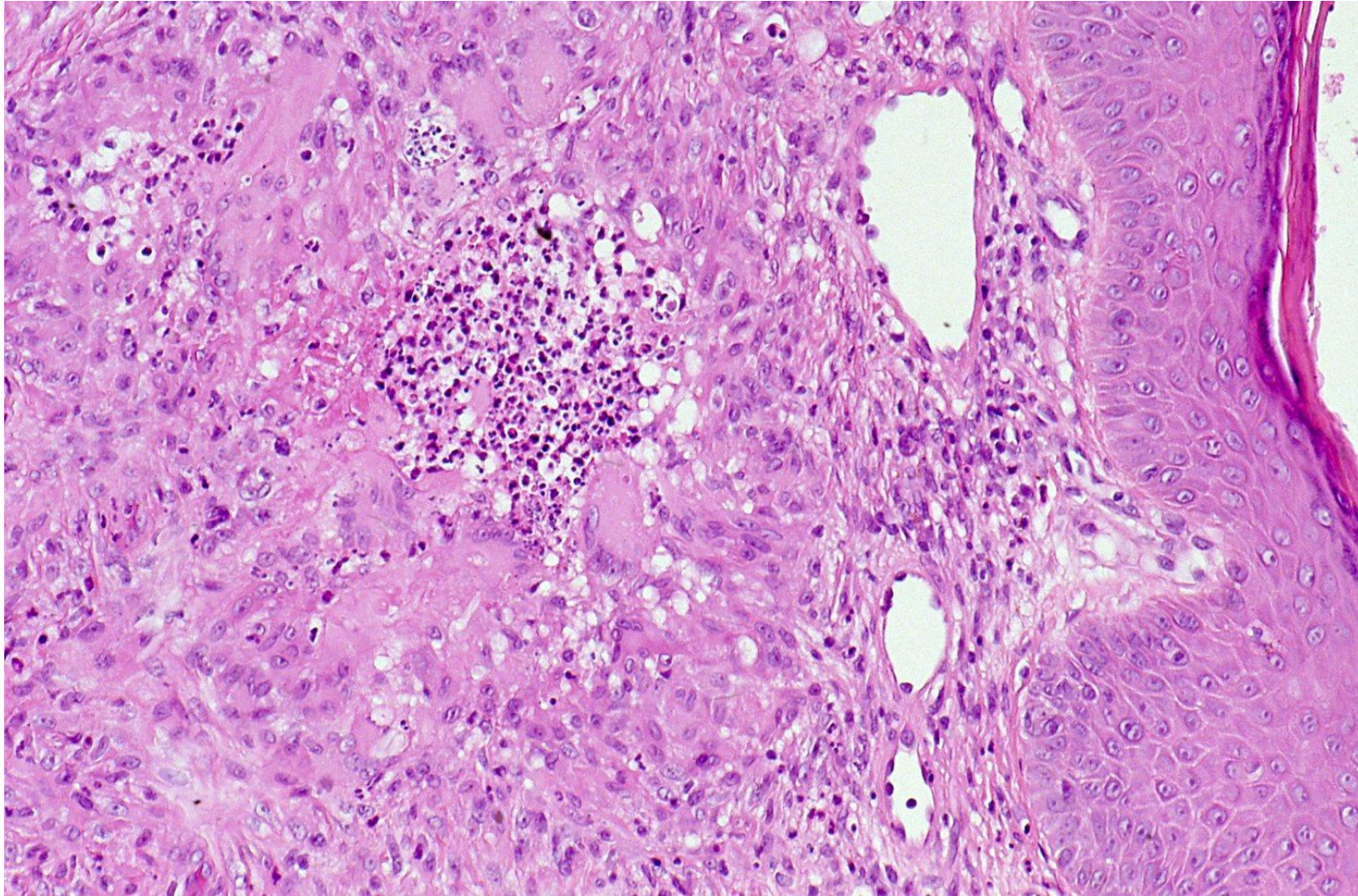
Skin biopsy of tuberculoid leprosy. Epithelioid granulomas are clustered in the dermis. The granulomas are seen just beneath the epidermis. No acid-fast bacilli are detectable. H&E-2



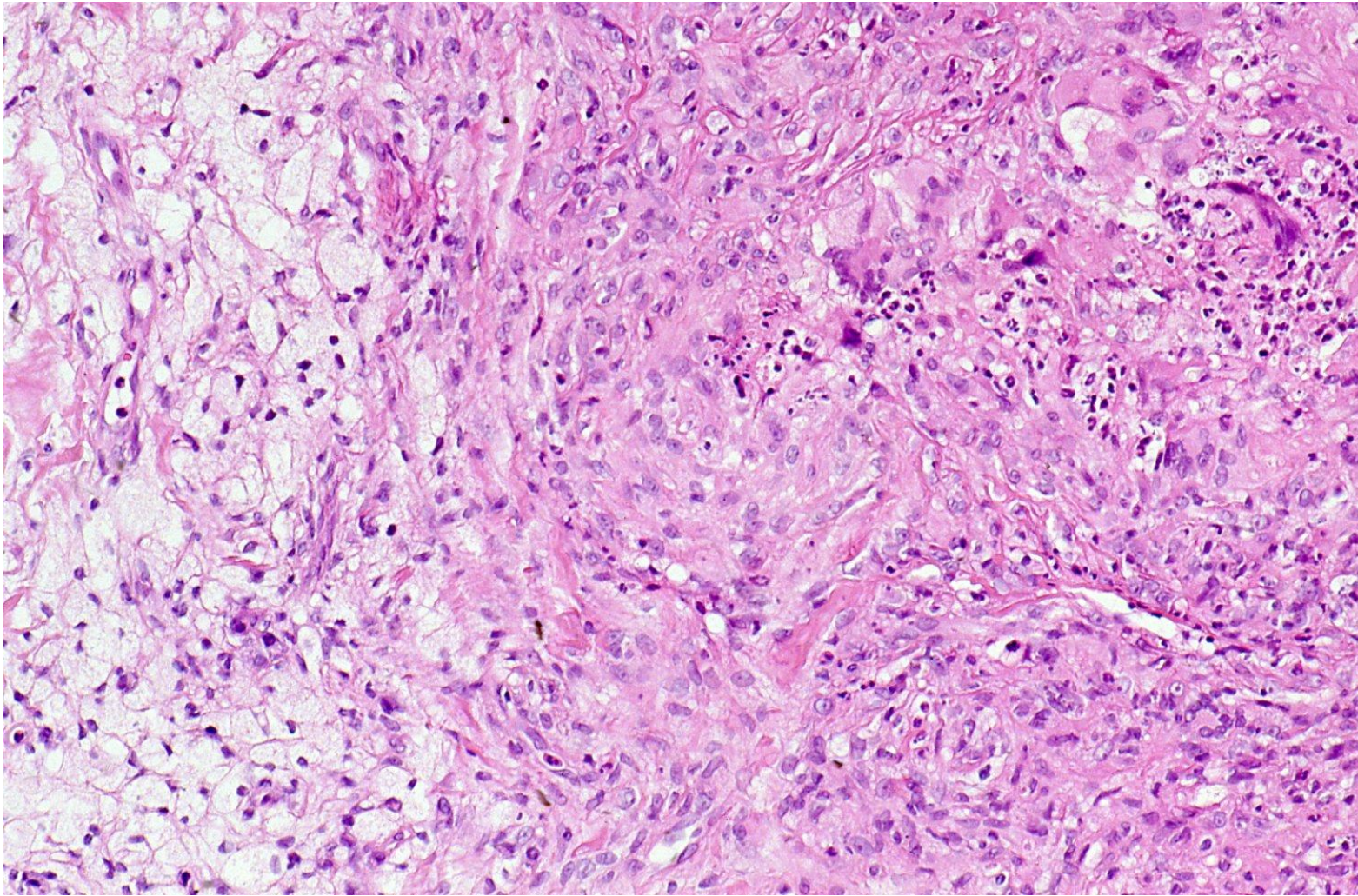
Skin biopsy of tuberculoid leprosy. Epithelioid granulomas are clustered in the dermis. No caseous necrosis is seen. H&E-3



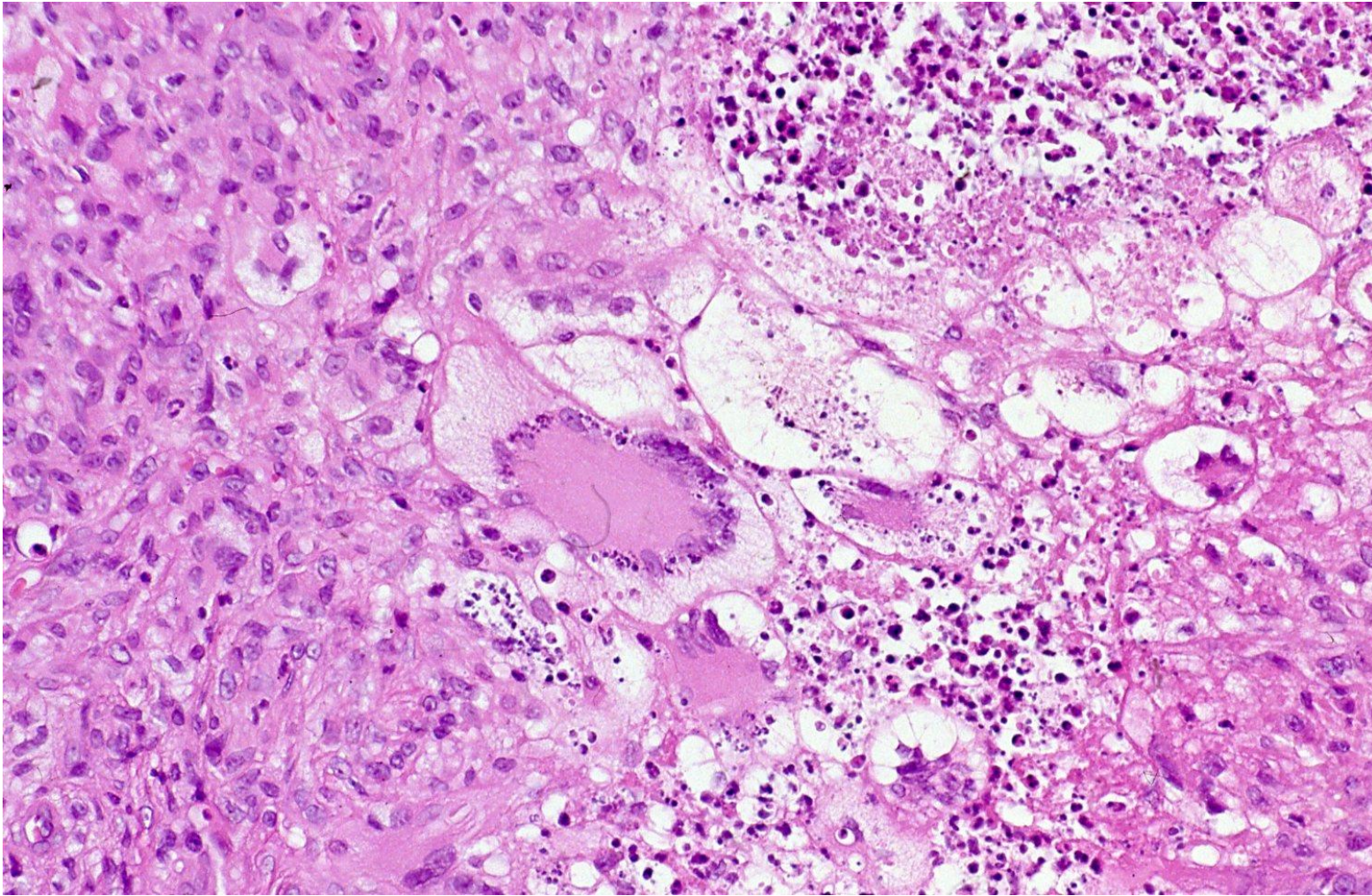
Skin biopsy of tuberculoid leprosy. Epithelioid granulomas involve nerve fascicle in the dermis. The granulomas are also seen just beneath the epidermis. H&E-4



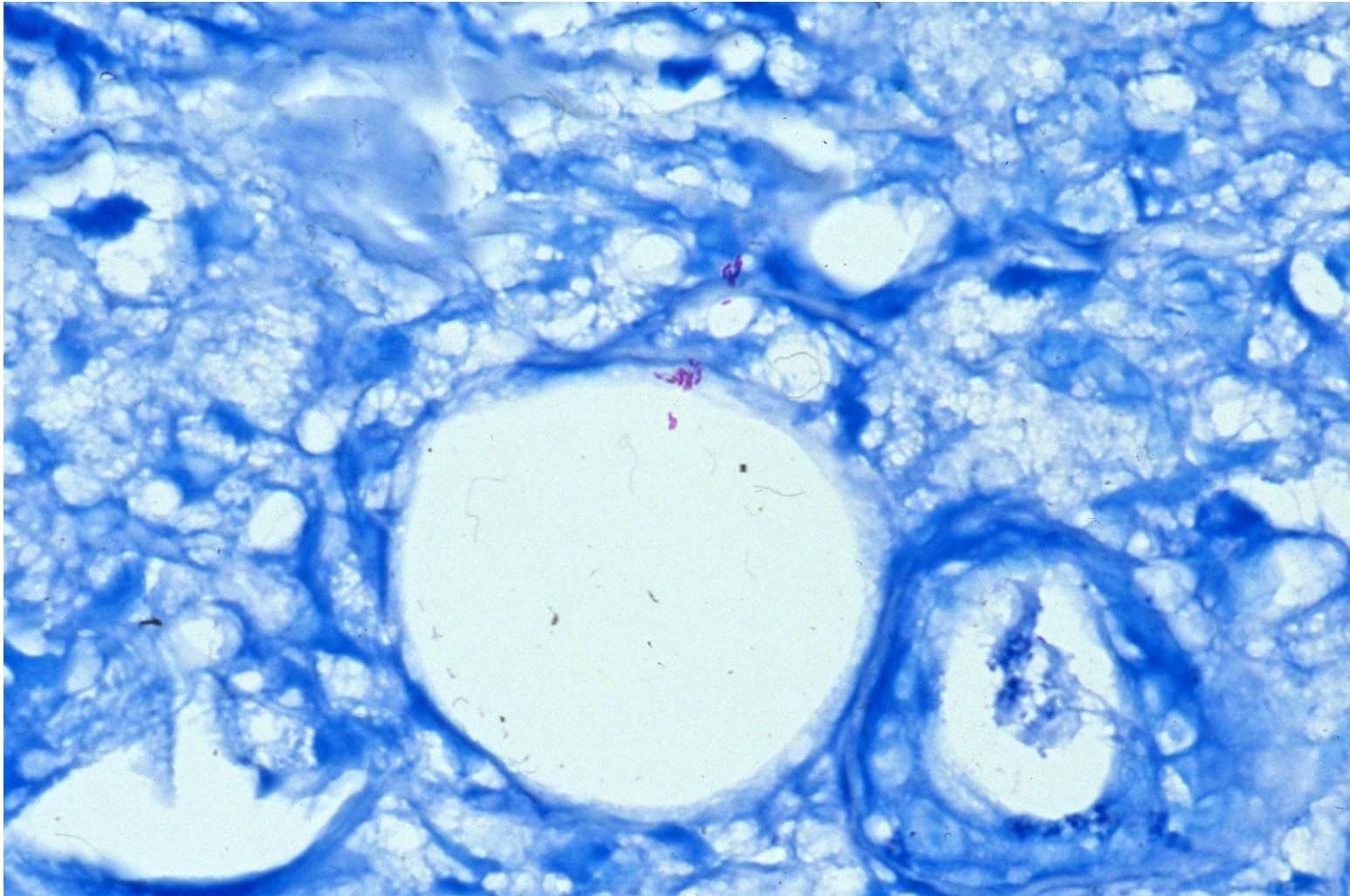
Skin biopsy of tuberculoid leprosy (another case). Epithelioid granulomas are clustered in the dermis. Focal necrosis with neutrophilic exudation is seen. H&E-5



Skin biopsy of tuberculoid leprosy (another case). Epithelioid granulomas are clustered in the dermis. Focal necrosis with neutrophilic exudation is seen. H&E-6



Skin biopsy of tuberculoid leprosy (another case). Epithelioid granulomas are clustered in the dermis. Multinucleated giant cells of Langhans type are observed. Focal necrosis with neutrophilic exudation is seen. H&E-7



Skin biopsy of tuberculoid leprosy (another case). Only a few acid-fast bacilli are detected in the granulomatous lesion, thus called as paucibacillary leprosy. Ziehl-Neelsen (Fite method)