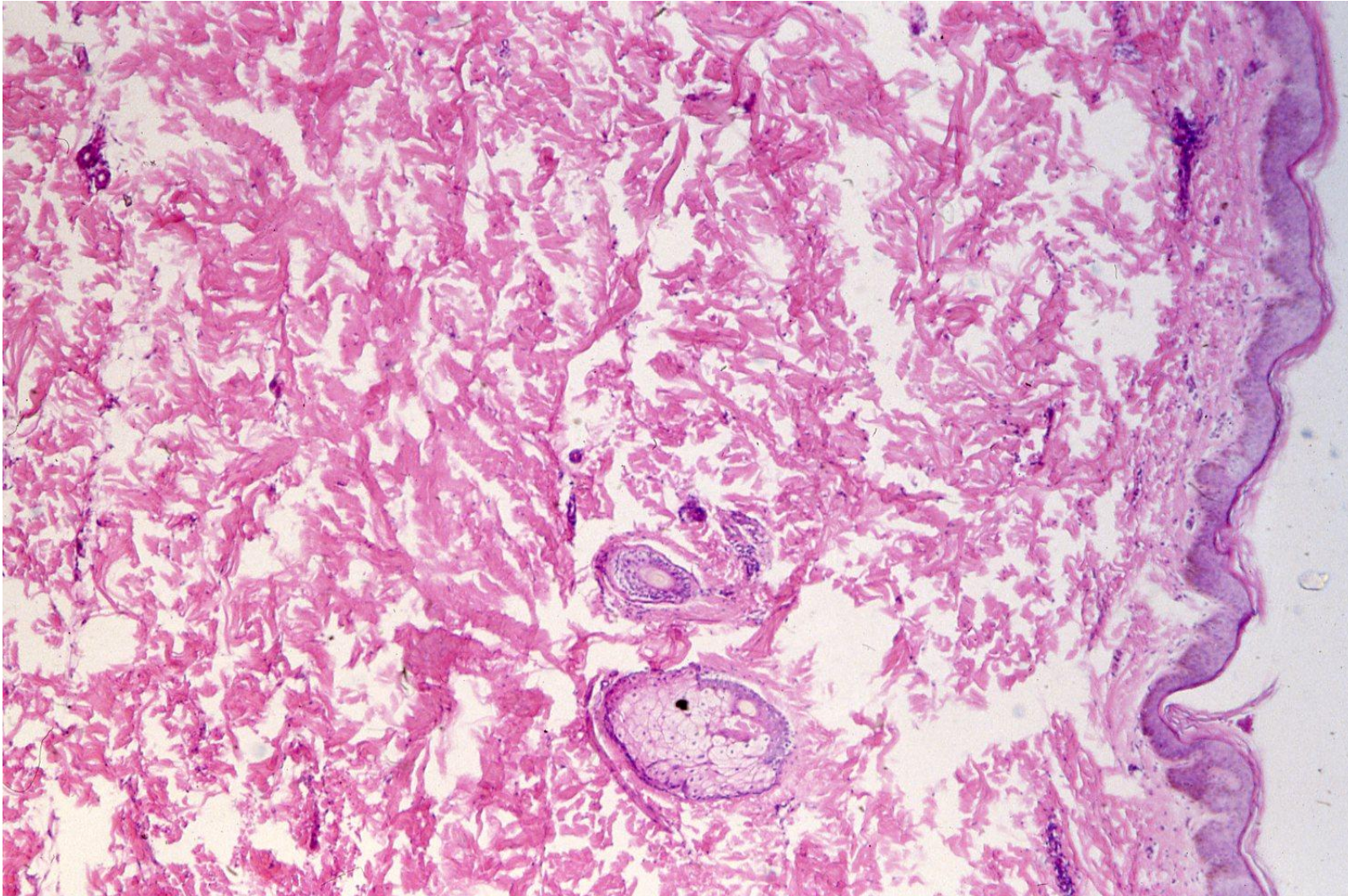


Nevus elasticum

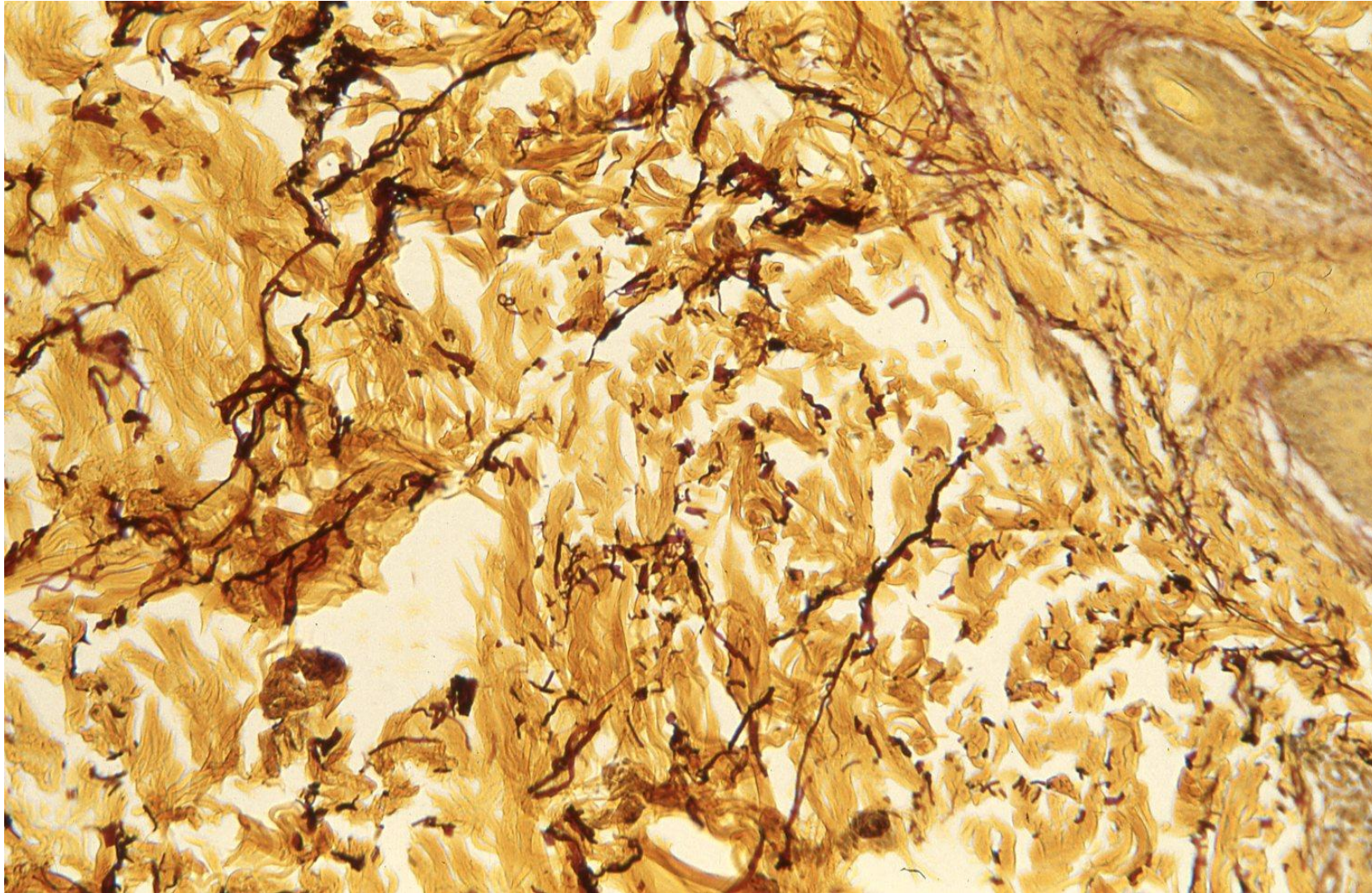
Nevus elasticum (elastic nevus or elastoma) is a type of connective tissue nevus featured by localized increase of elastic fibers in the dermis. Congenital nevus elasticum is mostly disseminated, and seen at birth or in the first years of life. The site of distribution includes the upper thorax area, face and abdomen. It can also occur as an isolated lesion in older adults (as an adult-onset elastoma). It presents with whitish yellowish papules or flat plaques measuring 2-4 mm. Microscopically, fragmented and disordered elastotic material accumulates in the dermis. Basal melanosis may be associated.

Ref.: Altmeyer P. Elastic nevus.

<https://www.altmeyers.org/en/dermatology/elastic-nevus-120375>



Nevus elasticum (elastic nevus) locally seen on the hip skin of a 20 y-o female patient. Abnormal accumulation of elastic fibers is observed (H&E).



Nevus elasticum (elastic nevus) locally seen on the hip skin of a 20 y-o female patient. Fragmented and disordered elastic fibers are seen in the dermis (EVG).