

Diseases, syndromes, lesions and methods with finder's name, D-J

Diseases, syndromes, lesions and methods with finder's name, beginning with D-J, are summarized: D: 11 disorders, E: 9 disorders, F: 11 disorders, G: 13 disorders, H: 19 disorders, I: 1 disorder, and J: 1 disorder. Representative figures are illustrated in the respective disorders.

D: 11 disorders, E: 9 disorders, F: 11 disorders, G: 13 disorders, H: 19 disorders, I: 1 disorder, J: 1 disorder

D: Darier's disease, DiGeorge syndrome, Döderlein bacillus, Döhle body, Down's syndrome, Dubin-Johnson syndrome, Dubois' abscess, Duchenne muscular dystrophy, Dupuytren's contracture, Dühring's dermatitis herpetiformis, Dutcher body

E: Ebner's gland cyst, Edwards syndrome, Ehlers-Danlos syndrome, Eisenmenger syndrome, Epstein anomaly, Epstein-Barr virus, Erdheim-Chester disease, Evans syndrome, Ewing sarcoma

F: Fabry's disease, Fallot's tetralogy, Fanconi syndrome, Felty syndrome, Feulgen reaction, Fitz-Hugh-Curtis syndrome, Fontana-Masson's argentaffinity, Forbes-Albright syndrome, Fordyce spot, Fournier's gangrene, Friedreich's ataxia

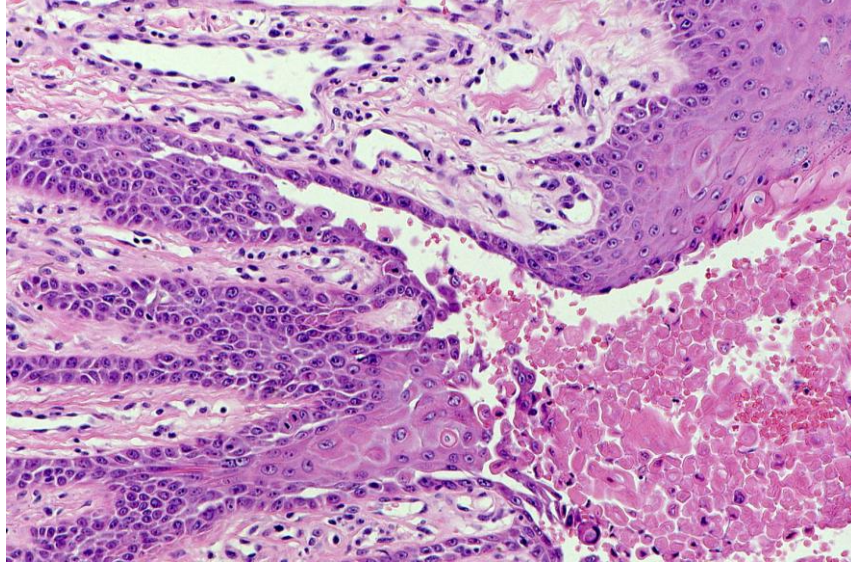
G: Gamna-Gandy nodule, Gardner's syndrome, Gartner's duct cyst, Gaucher's disease, Gerstmann-Straussler-Scheinker disease, Gomori's trichrome stain, Goodpasture syndrome, Graves' disease/Basedow's disease, Grawitz' tumor, Grimelius argyrophilia, Grocott stain, Grover's disease, Guillain-Barré syndrome

H: Hailey-Heiley disease, Hand-Schüller-Christian disease, Hansen's disease, Hartnup's disease, Hashimoto thyroiditis, Heberden's nodule, Heinrich typing of ectopic pancreas, Henoch-Schönlein purpura, Her's disease, Hirano body, Hirschsprung's disease, Hodgkin's lymphoma, Hoffmann syndrome, Holzer stain, Horner's syndrome, Howell-Jolly body, Hurler Hunter's syndrome, Huntington's disease, Hürthle cell tumor

I: Ito's nevus

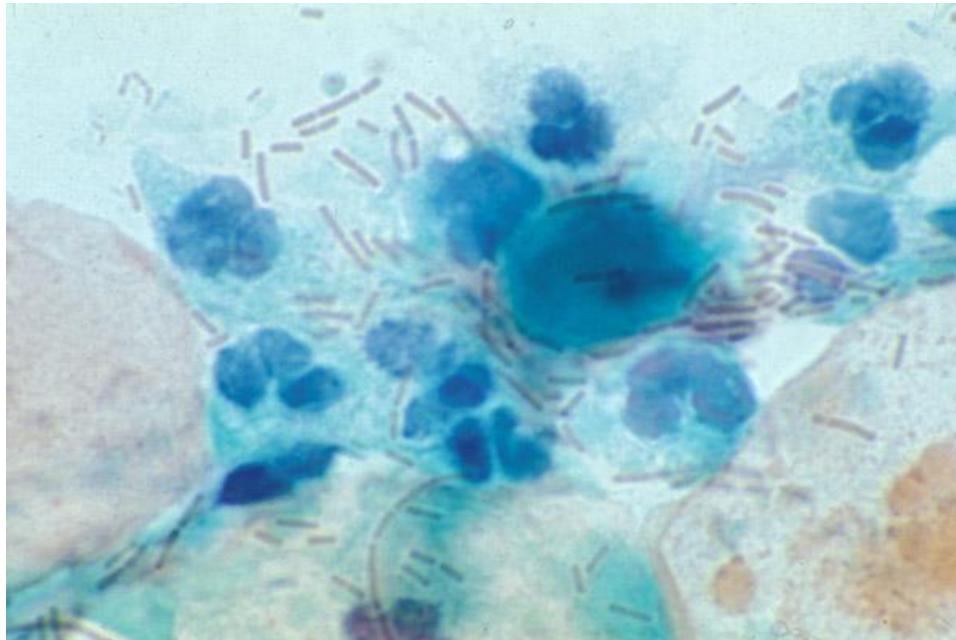
J: Jessner lymphocytic infiltrate

Darier's disease Hereditary bullous disease with acantholysis and dyskeratosis (corps ronds). Sk-73-Bull



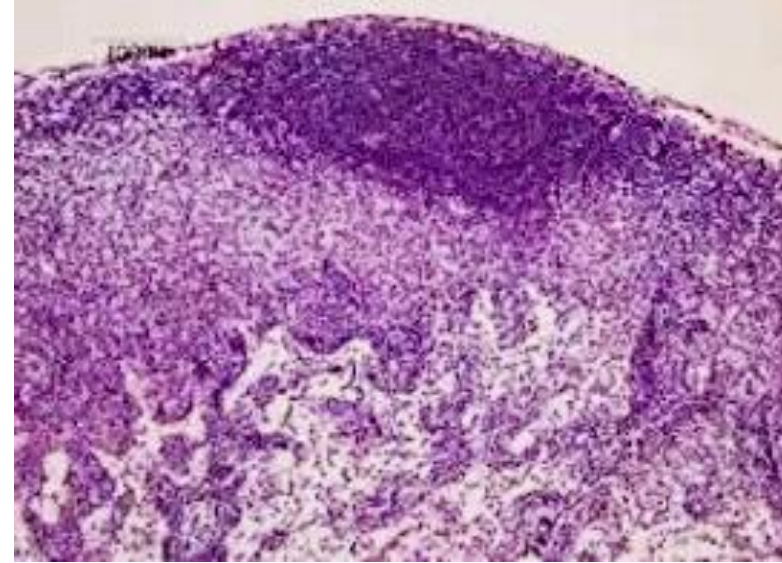
corps ronds seen in the acantholytic space

Döderlein bacillus (normal flora Lactobacillus in the vagina).



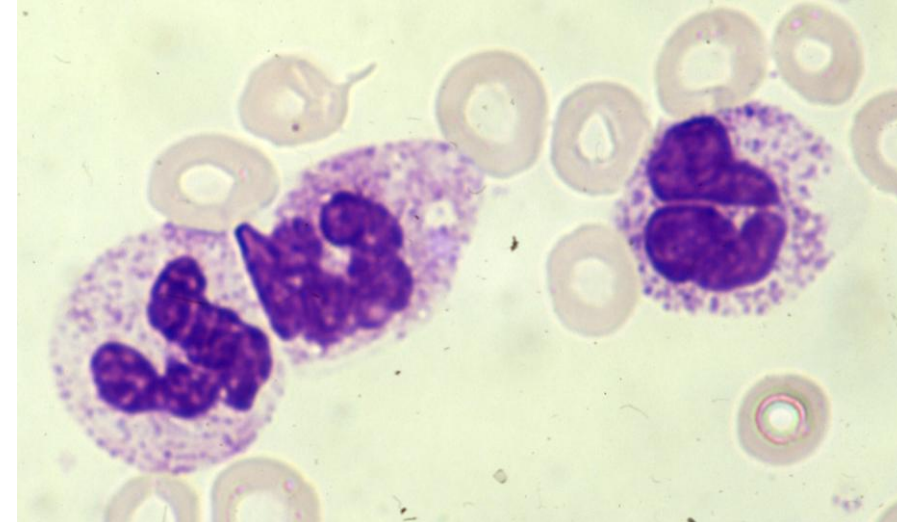
Döderlein bacilli are large-sized rods seen in pre-menopausal ladies.

DiGeorge syndrome (22q11.2 deletion syndrome). aplasia of the thymus and parathyroid with severe immunodeficiency



lymph node of **athymic mouse**: T-cell depletion and lymphoid follicle without germinal center

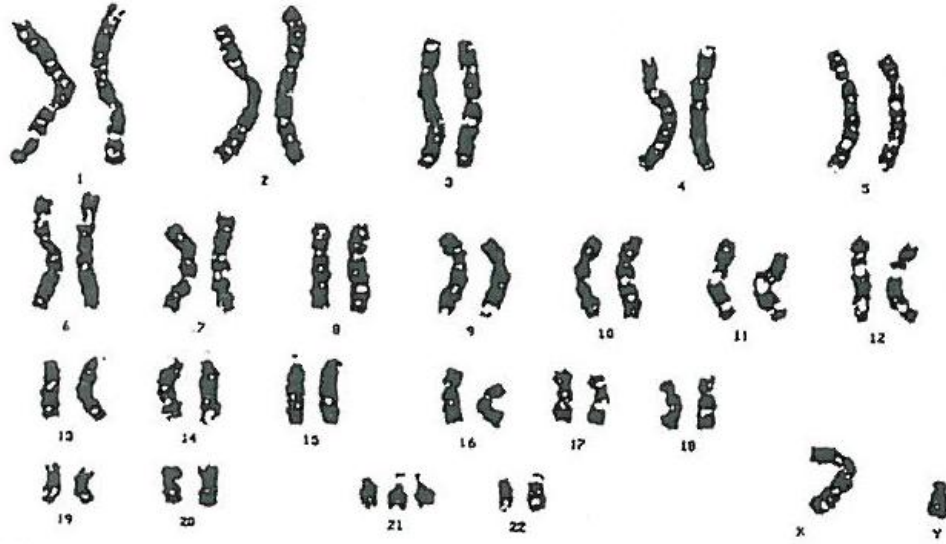
Döhle body (a light blue-gray, basophilic inclusion in the peripheral cytoplasm of the toxic neutrophil). Hemato-46-2-BM



Döhle body, representing a remnant of rough endoplasmic reticula, is seen in cases with accelerated granulocytopoiesis.

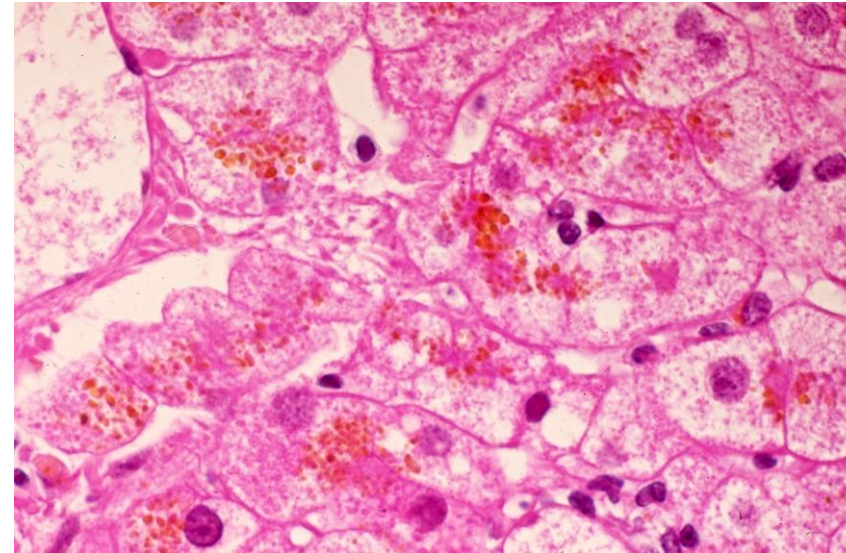
Down's syndrome (21 trisomy)

DPE-General-1



Dubin-Johnson syndrome: hereditary hyperbilirubinemia.

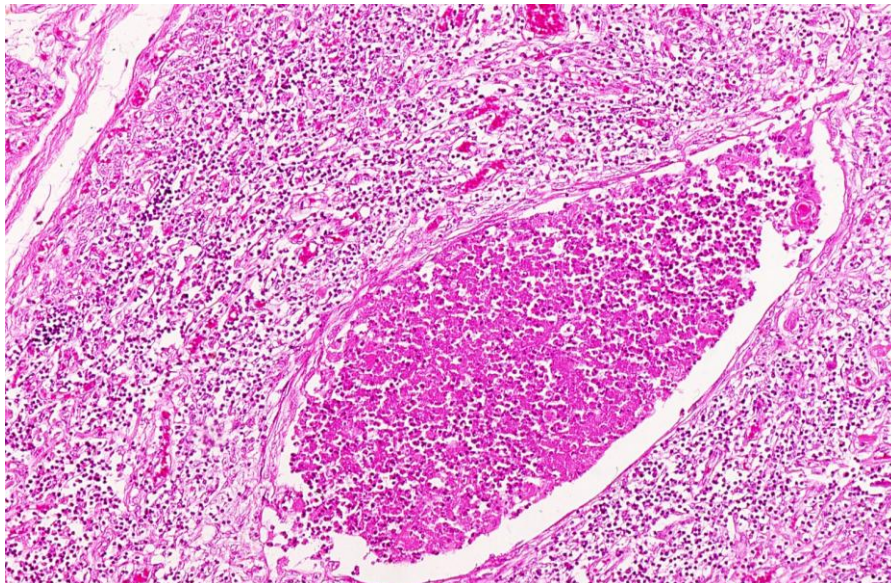
HBP-96-1-liver and HBP-96-2-liver



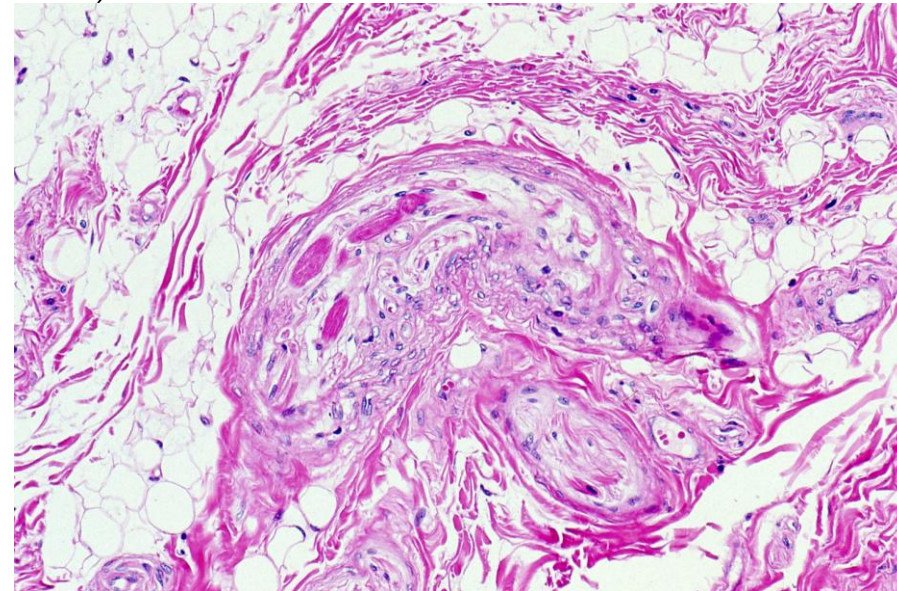
black liver
with
hepatocellular
pigmentation

Dubois' abscess (microabscess formed in Hassall's corpuscles of the thymus. Mediast-4

Dubois' abscess is typically observed in congenital syphilis. The present lesion is seen in Down's syndrome.

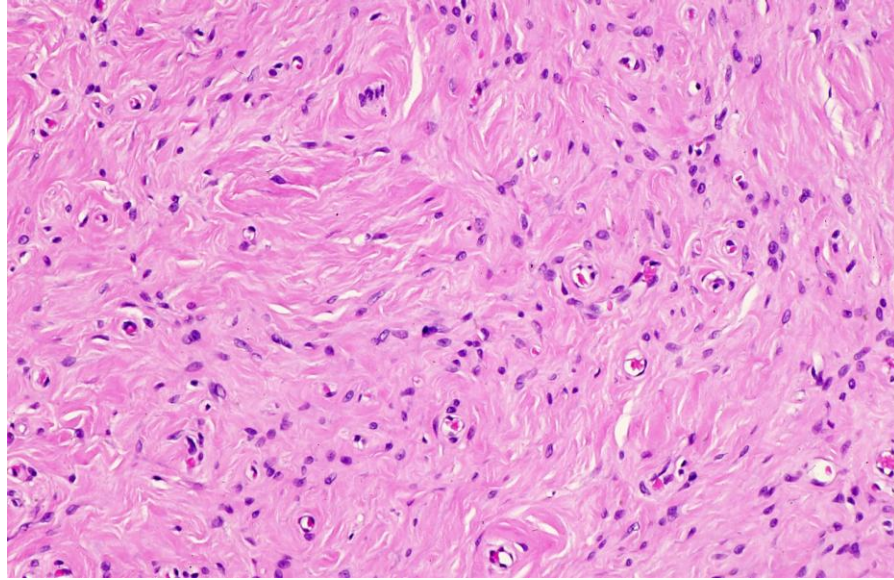


Duchenne muscular dystrophy (X-linked hereditary disorder). neuro-184-Smuscle



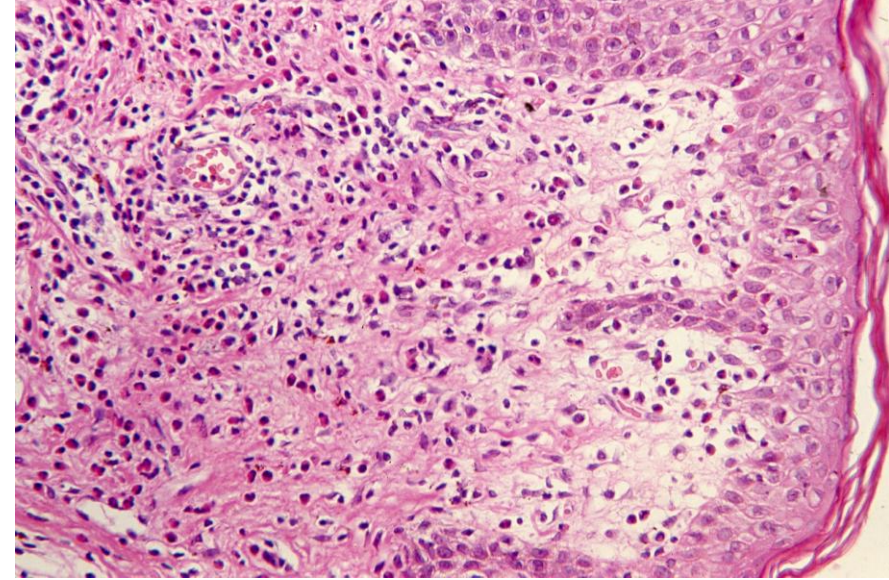
Severe loss
of muscle
fibers with
retained
muscle
spindles

Dupuytren's contracture (fibromatosis of the palm and fingers). ConnectT-99-1-SoftT



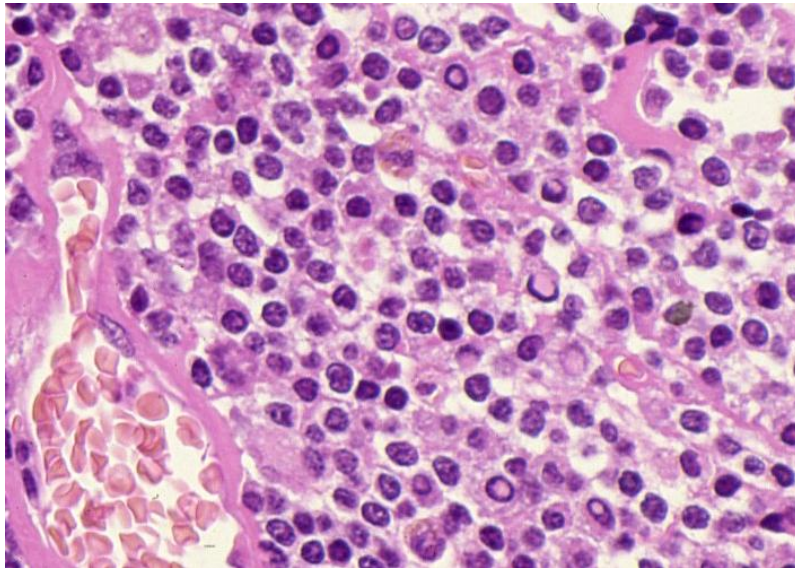
fibromatosis is a benign fibroblastic lesion with desmoplasia

Dühring's dermatitis herpetiformis (skin lesion in celiac disease). Sk-66-Bull



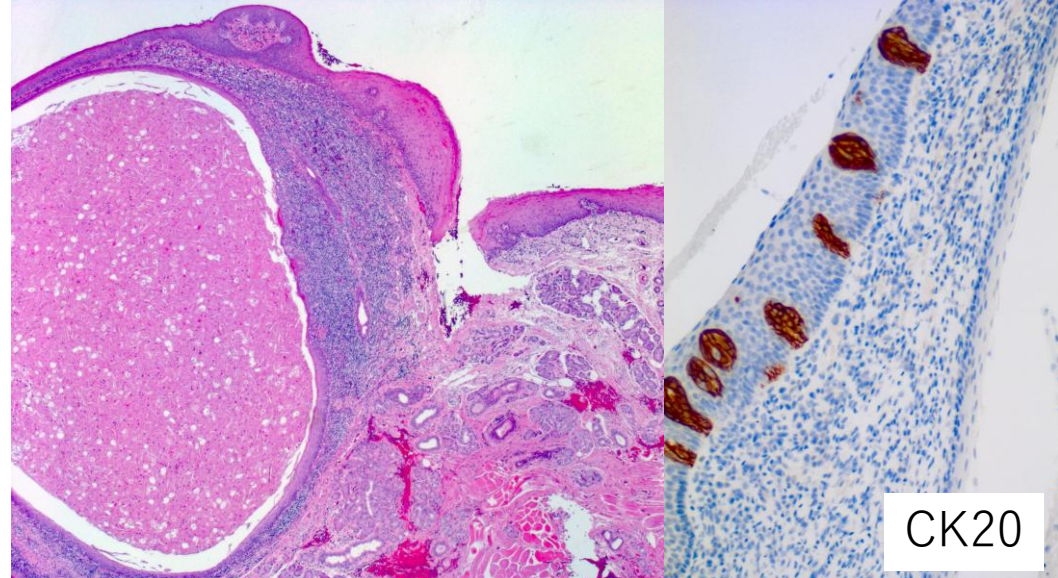
Subepidermal blisters with neutrophilic/eosinophilic reaction with IgA deposition

Dutcher body (intranuclear cytoplasmic inclusion in plasma cell disorders). Hemato-84-BM



lymphoplasmacytic lymphoma of the conjunctiva. Note eosinophilic nuclear inclusions

Ebner's gland cyst (serous gland cyst beneath the vallate papilla). HN-79-OC



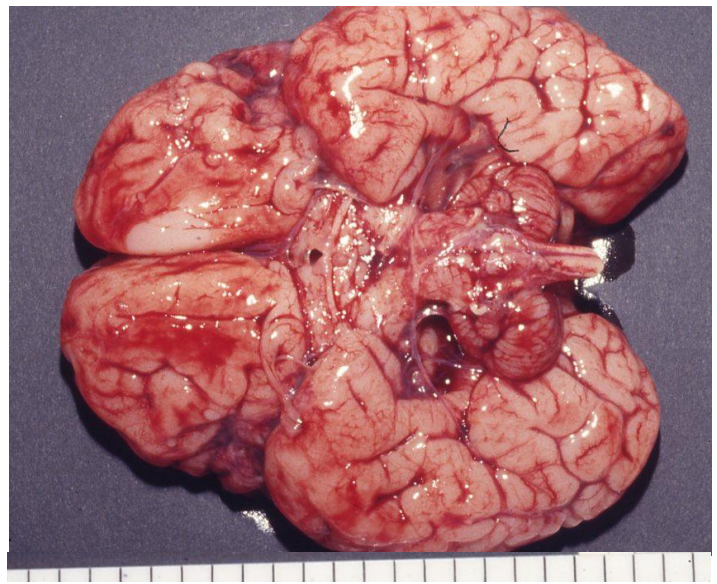
Ebner's gland is a serous gland rinsing the vallate papilla. The vallate papilla contains CK20-positive taste buds.

CK20

Edwards syndrome (18 trisomy): lethal chromosomal abnormalities, including cerebellar hypoplasia.

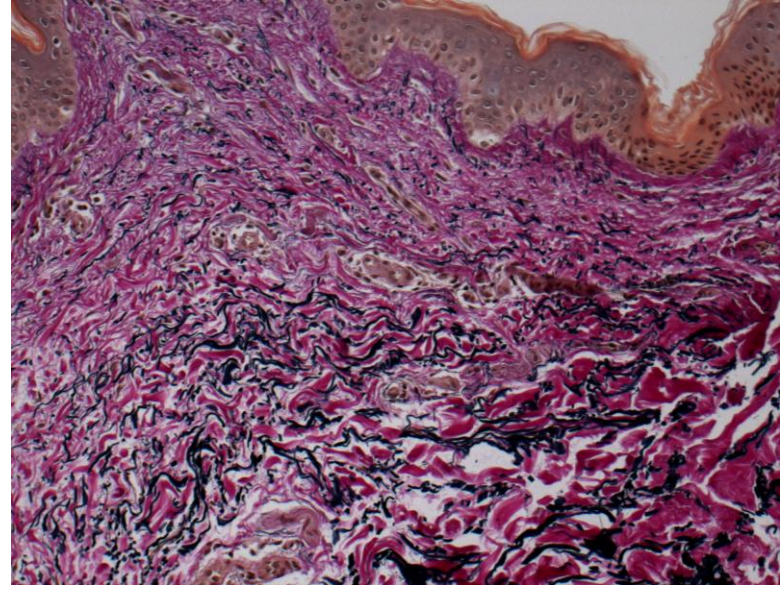
DPE-General-1

cerebellar hypoplasia is one of the signs of 18 trisomy syndrome



Ehlers-Danlos syndrome (a hereditary disorder with joint hypermobility, skin hyperextensibility).

Sk-162-3-Derm

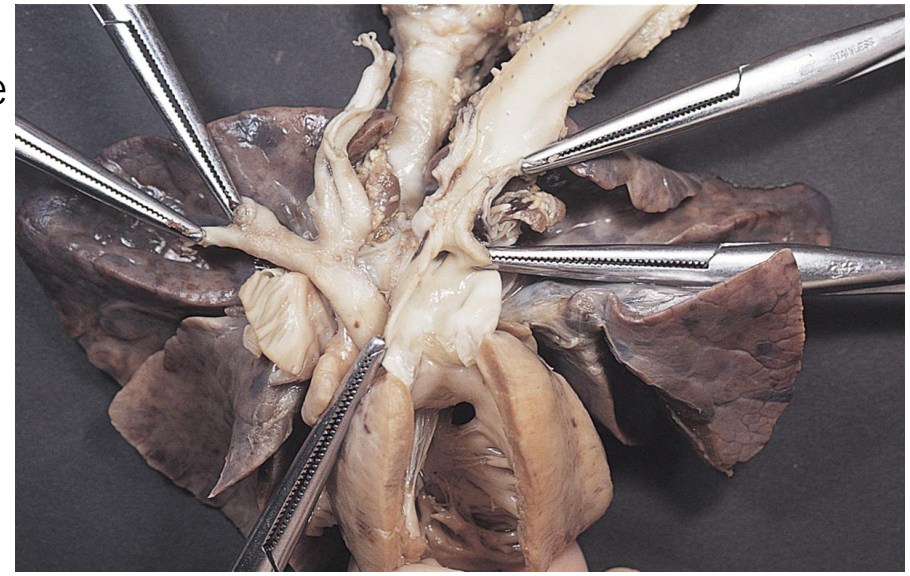


EVG stain showing increase of elastic fibers in the dermis

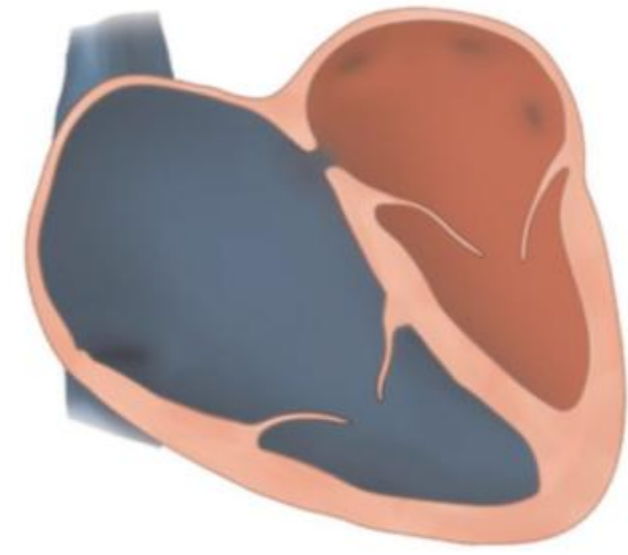
Eisenmenger syndrome (pulmonary hypertension caused by a long-standing left-to-right shunt by VSD, ASD or PDA)

Lung-29-a-autoimmune

VSD + PDA, causing pulmonary hypertension



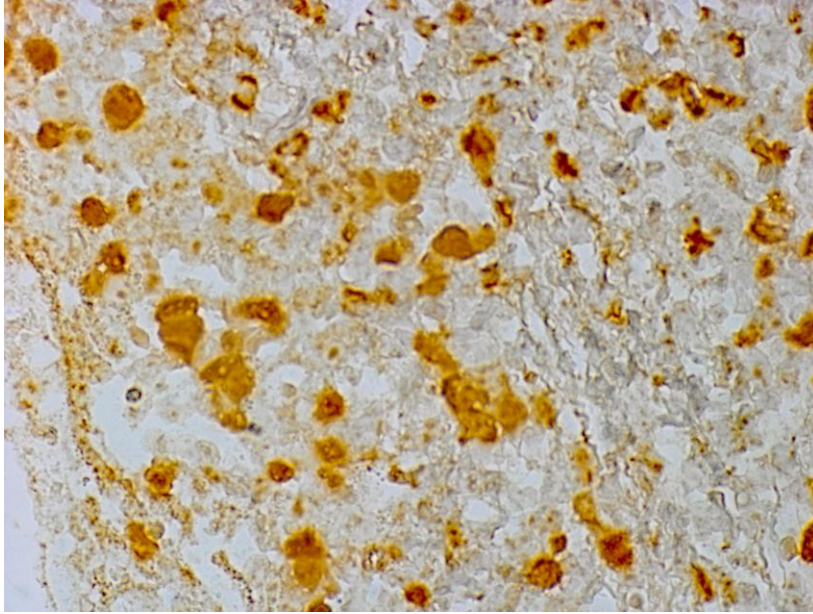
Epstein anomaly (congenital malformation of the TV, AV junction and RV)



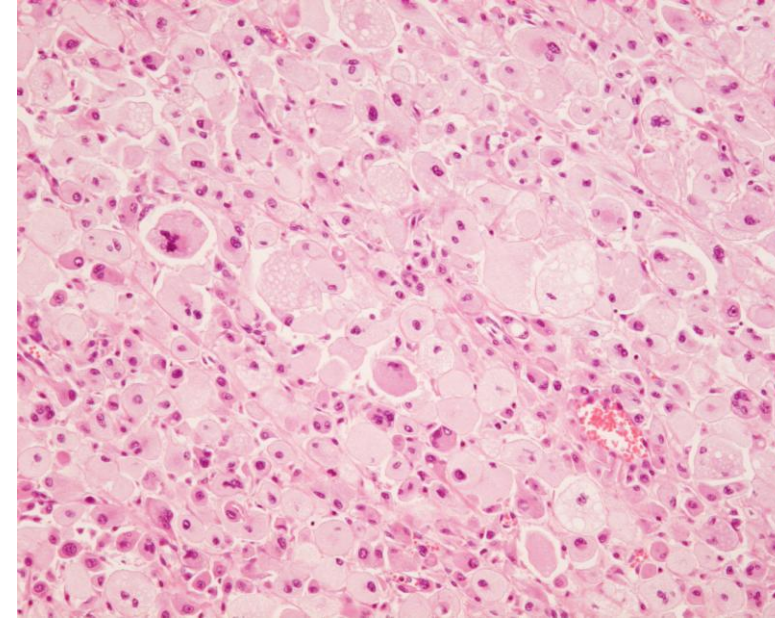
Lower displacement of the TV annulus, causing tricuspid regurgitation, right atrial dilatation, right ventricular failure and severe arrhythmia. ASD is often complicated.

Epstein-Barr virus (EBV infection is proven with EBER *in situ* hybridization). Inf-266-2-virus

EBER reactivity in infectious mononucleosis (tonsil)



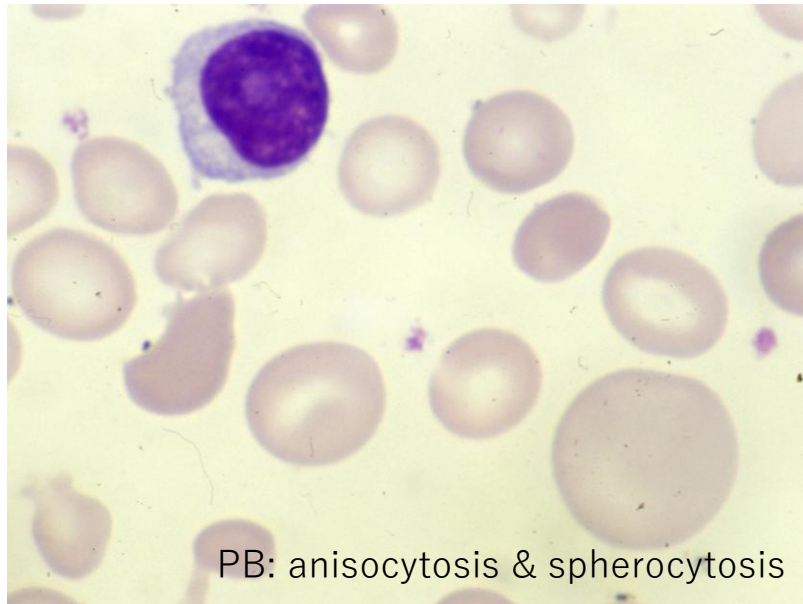
Erdheim-Chester disease (foamy histiocytosis of bone and other tissues). ConnectT-43-bone and Uro-255-prostate



Foamy histiocytosis involving the prostate

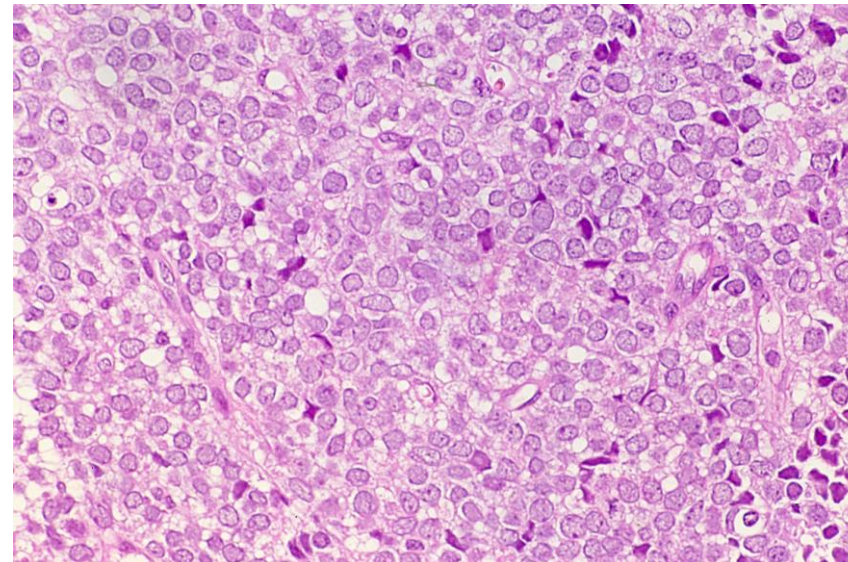
Evans syndrome (combined hematologic autoimmunity).

an autoimmune disease featured by simultaneous or sequential occurrence of autoimmune hemolytic anemia and immune thrombocytopenic purpura, leading to fatigue, weakness and bleeding



PB: anisocytosis & spherocytosis

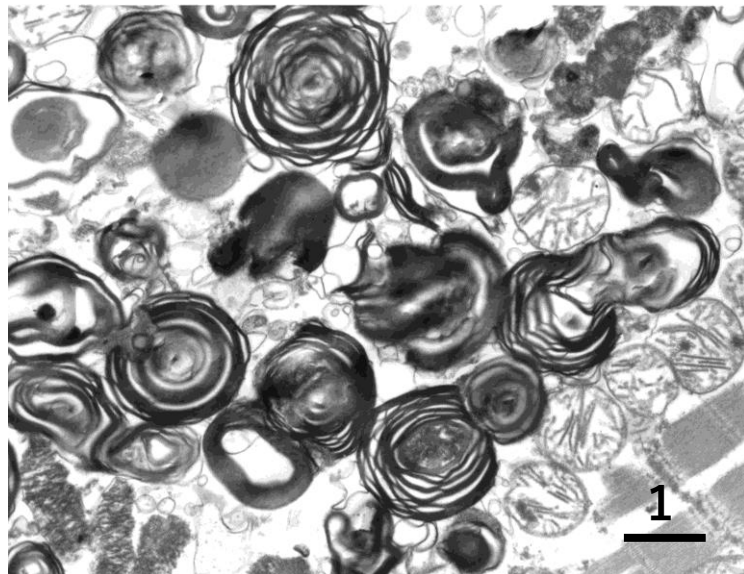
Ewing sarcoma (small round cell sarcoma of bone and soft tissue). ConnectT-70-bone



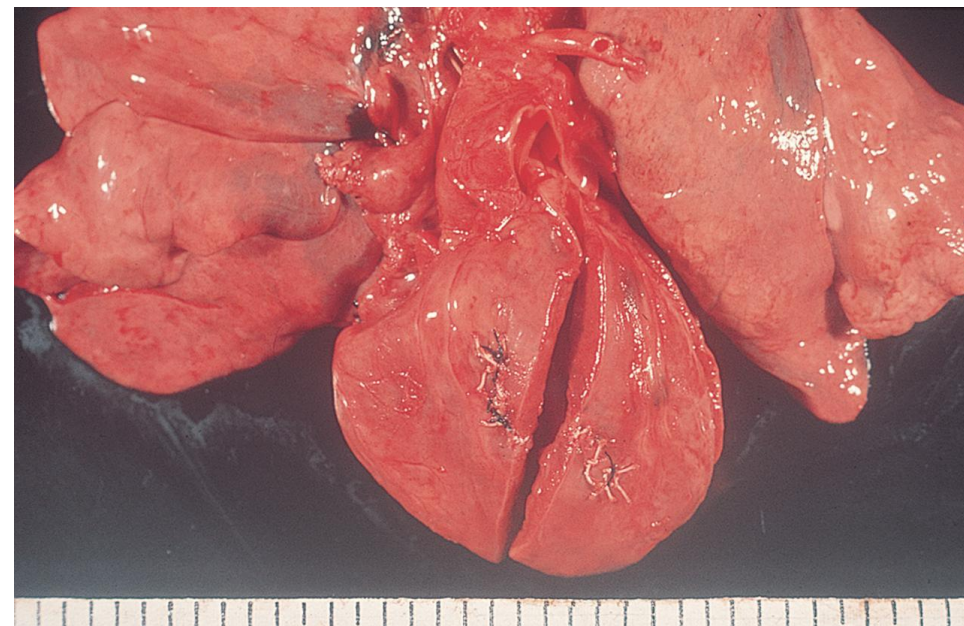
monomorphic small round cells with neuroectodermal differentiation

Fabry's disease (X-linked inheeditary glycosphingo-lipidosis involving skin, kidney and heart). Sk-417-BENeo, Uro-69-kidney, Vascular-24-heart

zebra bodies consisting of glycosphingolipid in the cytoplasm of endothelial cells and cardiomyocytes (ultrastructure)



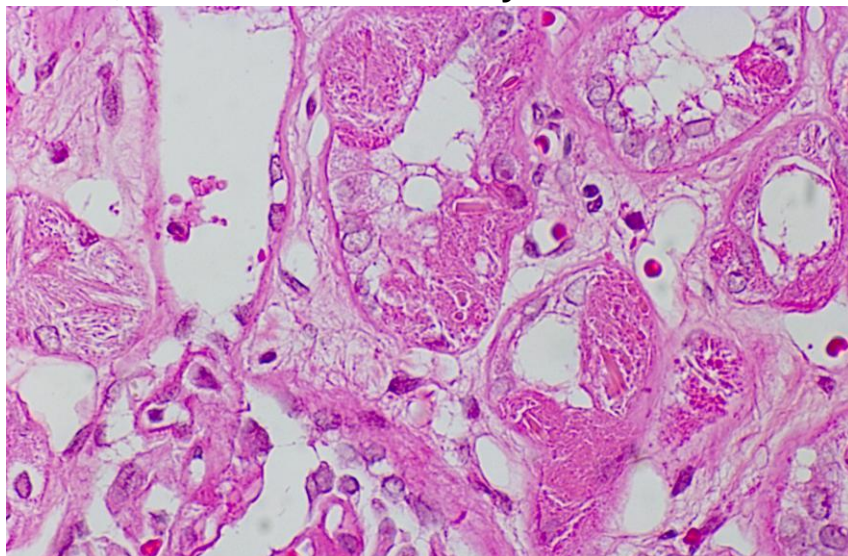
Fallot's tetralogy (pulmonary stenosis, VSD, RV hypertrophy, overriding aorta). Vascular-4-heart



autopsy findings of tetralogy of Fallot with aortic overriding

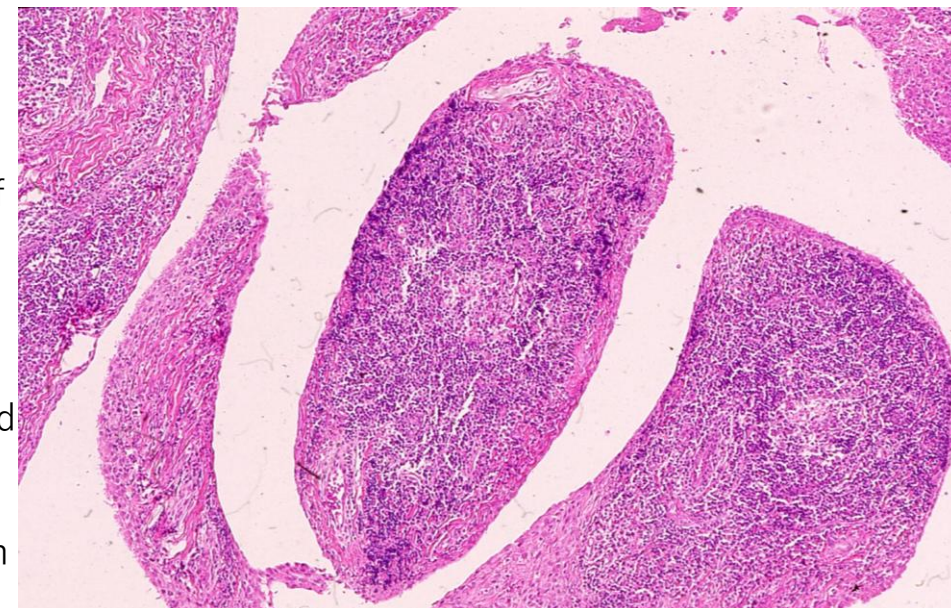
Fanconi syndrome (proximal renal tubular reabsorption defect). Uro-71-4-kidney

crystalline inclusions in the cytoplasm of the proximal renal tubules



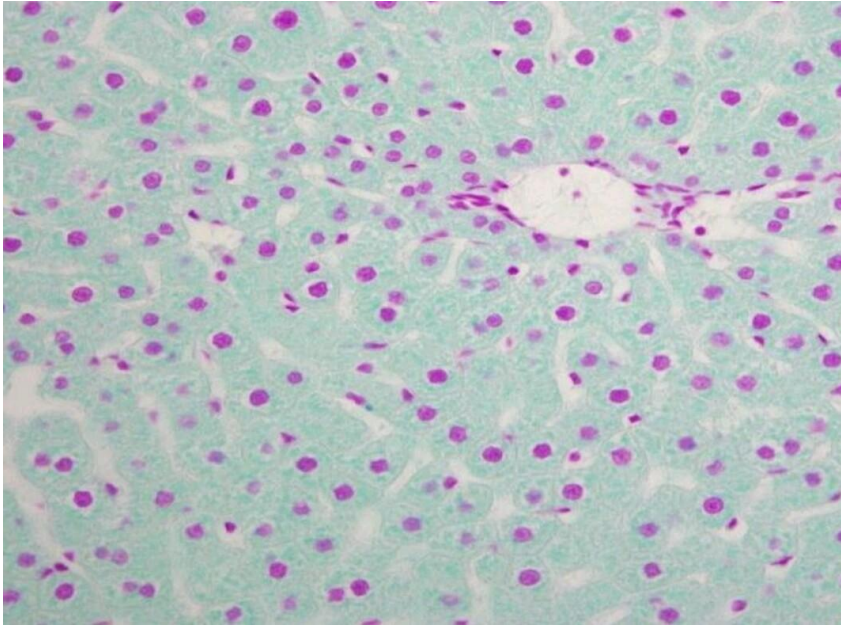
Felty syndrome (RA with splenomegaly and neutropenia). ConnectT-13-1-joint

extra-articular manifestations of seropositive and HLA-DR4 related rheumatoid arthritis with splenomegaly and neutropenia: RA synovitis with pannus formation shown.



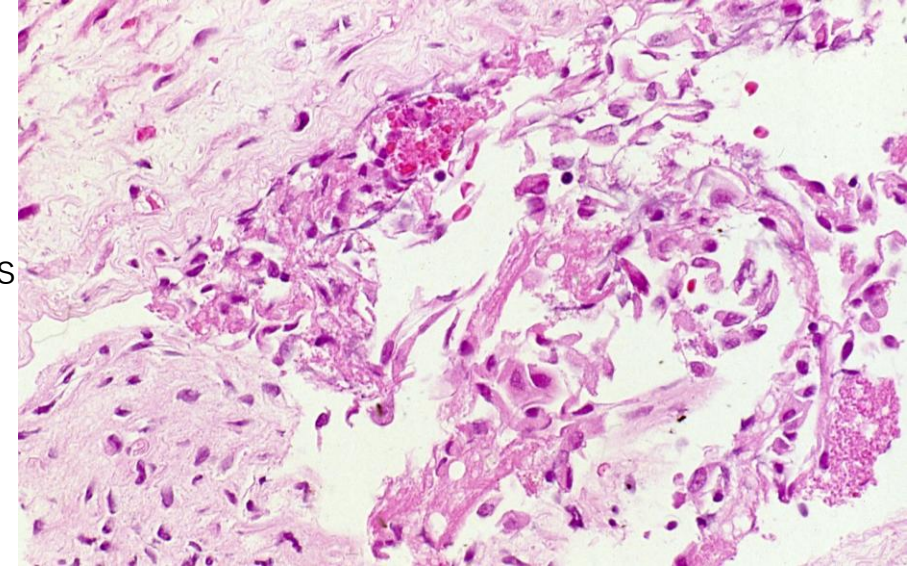
Feulgen's reaction (detecting DNA in sections)

Feulgen's reaction is a simple histochemical method for detecting DNA in the nucleus in magenta color. RNA is undetectable. Sections are subjected to warm (60° C) hydrochloric acid, then to Schiff reagent. Normal rat liver.



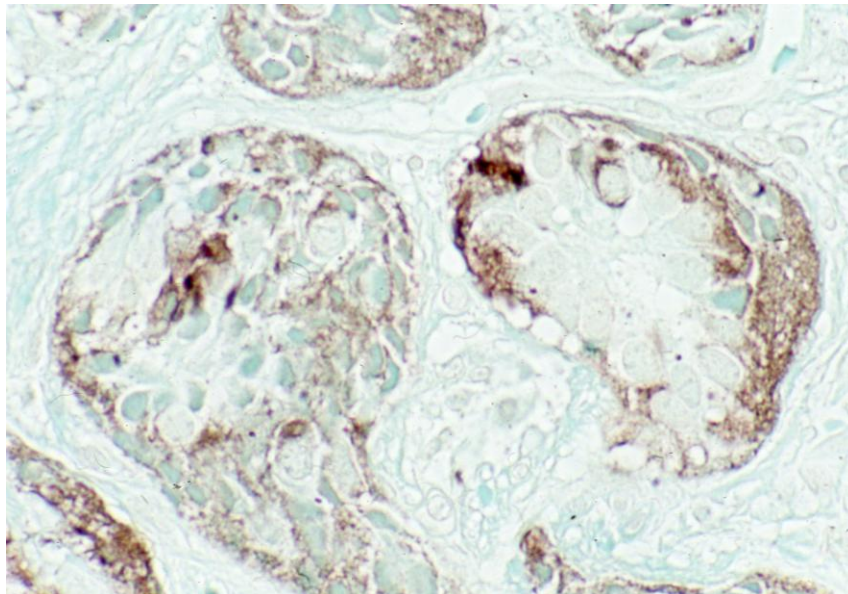
Fitz-Hugh-Curtis syndrome (peritonitis caused by pelvic inflammatory disease, mainly chlamydia). Serosa-4-a

perihepatitis associated with chlamydial salpingitis

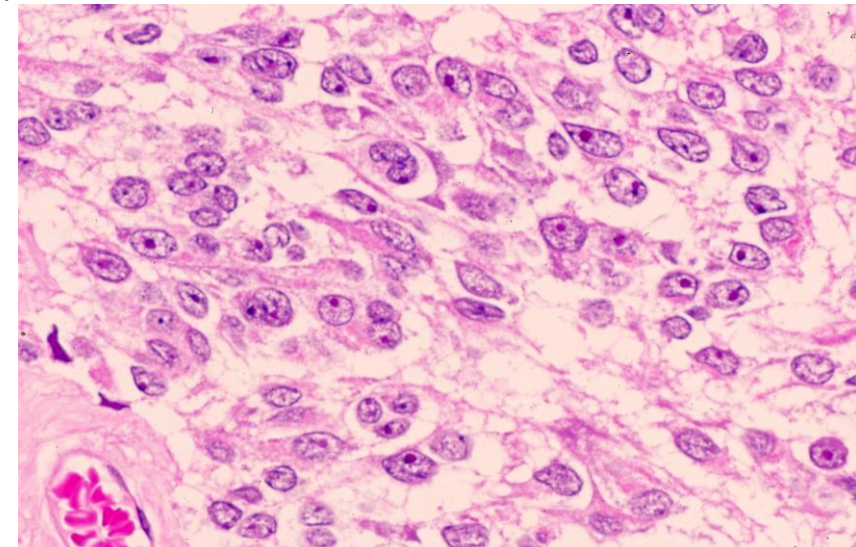


Fontana-Masson staining (detecting melanin-producing cells, serotonin-positive argentaffin cells, fungal cells and lipofuscin). GI-308-1-appendix, GI-425-4-1-Colorectum, Inf-239-a-fung and HBP-85-2-liver

serotonin-producing argentaffin rectal carcinoid tumor



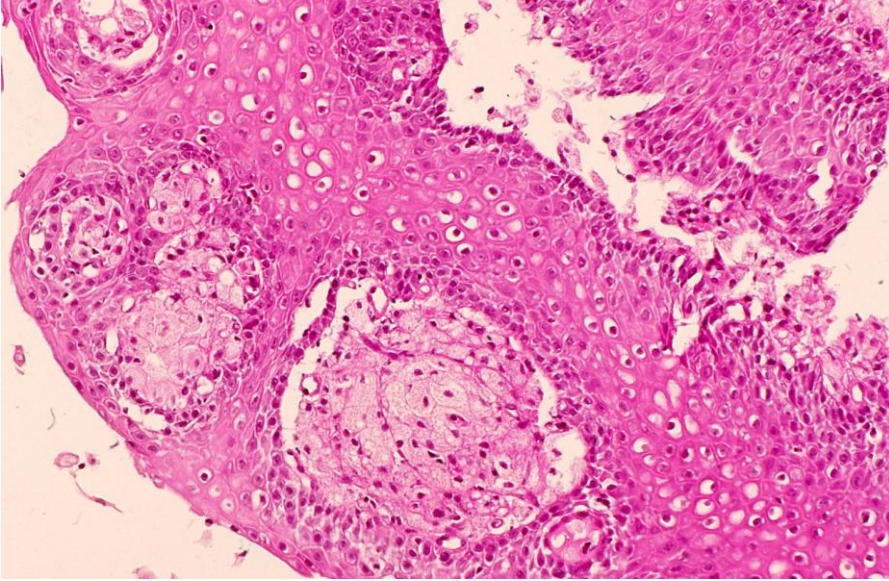
Forbes-Albright syndrome (amenorrhea-galactorrhea syndrome with pituitary prolactinoma). Endo-10-Pit



macroprolactinoma (chromophobe adenoma) of the anterior pituitary gland

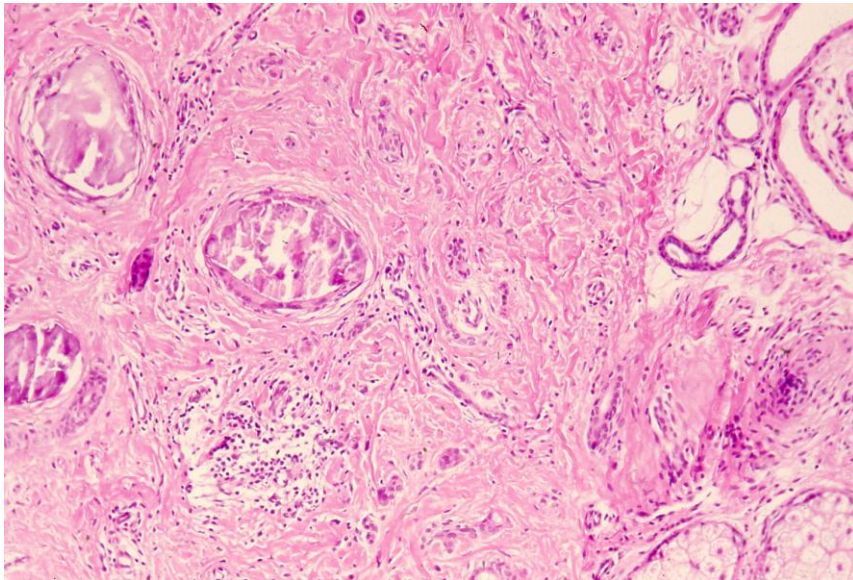
Fordyce spot (ectopic sebaceous glands without hair follicles). GI-eso (1-42), HN-77-OC, Gyne-27-vagina

ectopic sebaceous glands in the squamous mucosa, grossly presenting as yellowish spots



Fox-Fordyce disease (apocrine miliaria). Occlusion of the apocrine gland ducts causes pruritic papules. Sk-215-2-Derm

calcified occlusion of the apocrine gland ducts seen in the labia major of an 11 y-o girl.



Fournier's gangrene (progressive necrosis of the scrotum). Uro-303-1-scrotum, Uro-303-2-scrotum

massive and lethal hemorrhagic gangrene of the scrotum

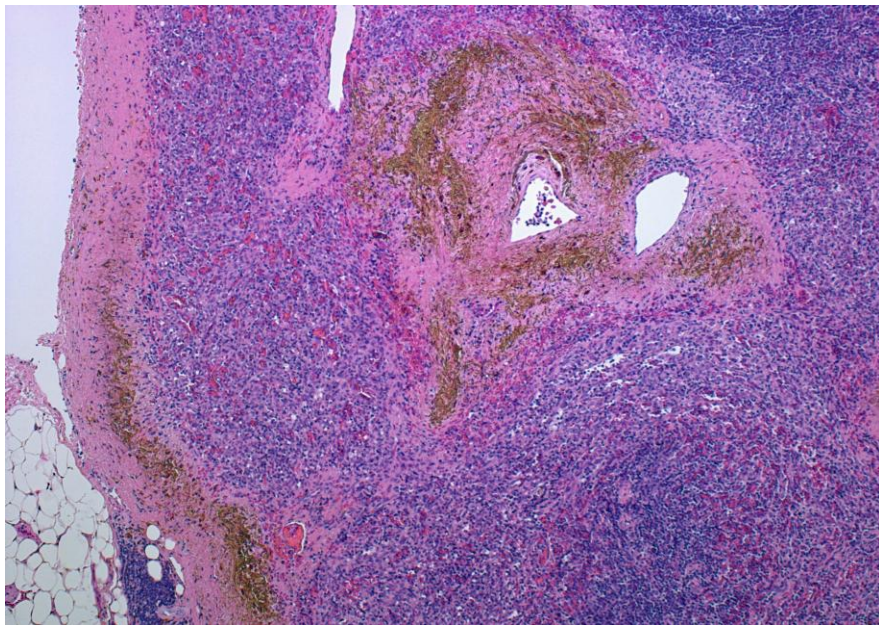


Friedreich's ataxia: hereditary ataxia with fiber loss of the dorsal columns and spinocerebellar tracts



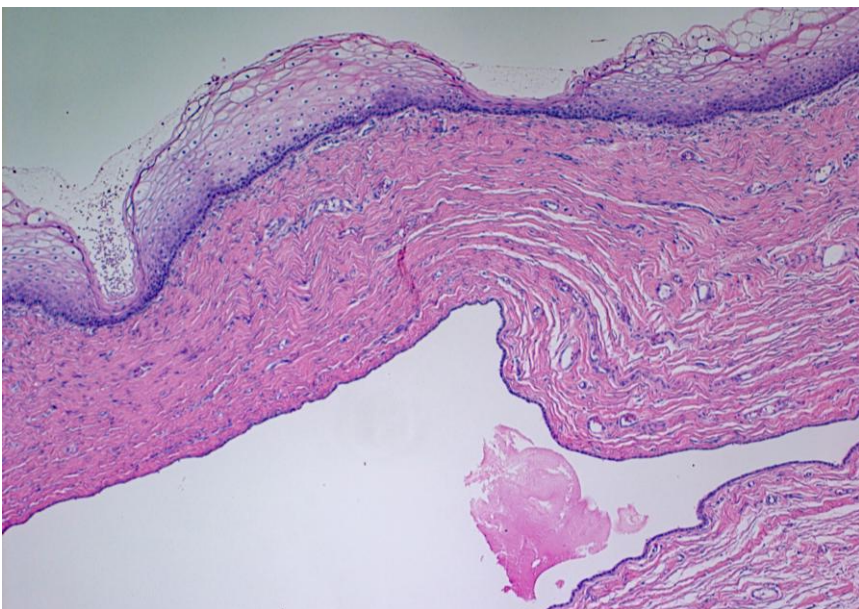
loss of myelin sheath from the long tracts (the dorsal column) (LFB-HE)

Gamna-Gandy nodule (hemosiderin deposited nodules in the spleen in liver cirrhosis). Hemato-11-spleen



hemosiderin deposition in the vascular wall and capsule of the spleen

Gartner's duct cyst (wolffian duct remnant in the vagina). Gyne-24-vagina



The vaginal wall contains a dilated non-mucinous cyst.

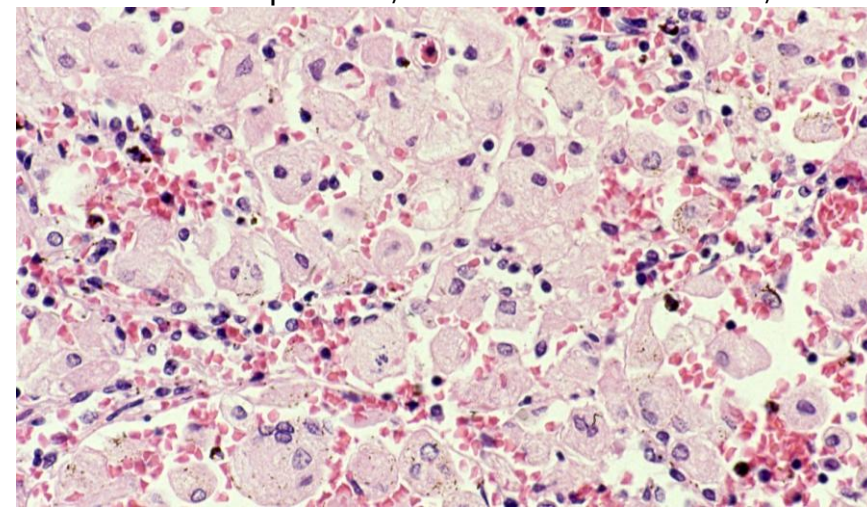
Gardner's syndrome (subtype of familial adenomatous polyposis with various types of benign and malignant tumors, especially desmoid tumor). GI-422-1-colorectum



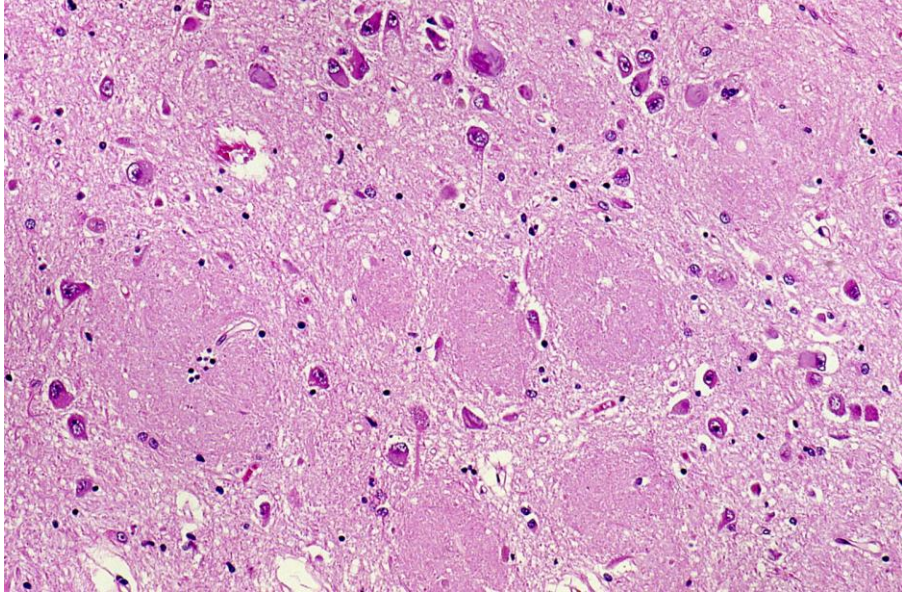
Surgery may provoke a new desmoid tumor.

Gaucher's disease (hereditary lysosomal disease with glucosylceramide deposition in macrophages). Hemato-3-1-spleen, Hemato-3-2-spleen, Hemato-50-BM, HBP-100-liver

Gaucher cells in the red pulp of the spleen

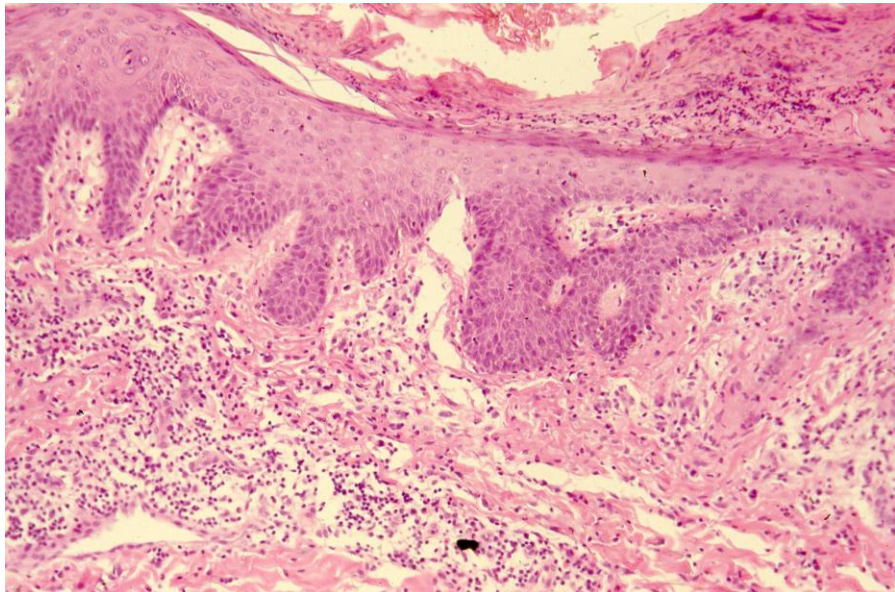


Gerstmann-Straussler-Scheinker disease
(autosomal dominant prion encephalopathy). neuro-63-brain



numerous
senile
plaques
(beta-
amyloid
positive)

Gibert's pityriasis rosea (a self-limiting rash resolving in 6–10 weeks). Sk-17-2-Lich



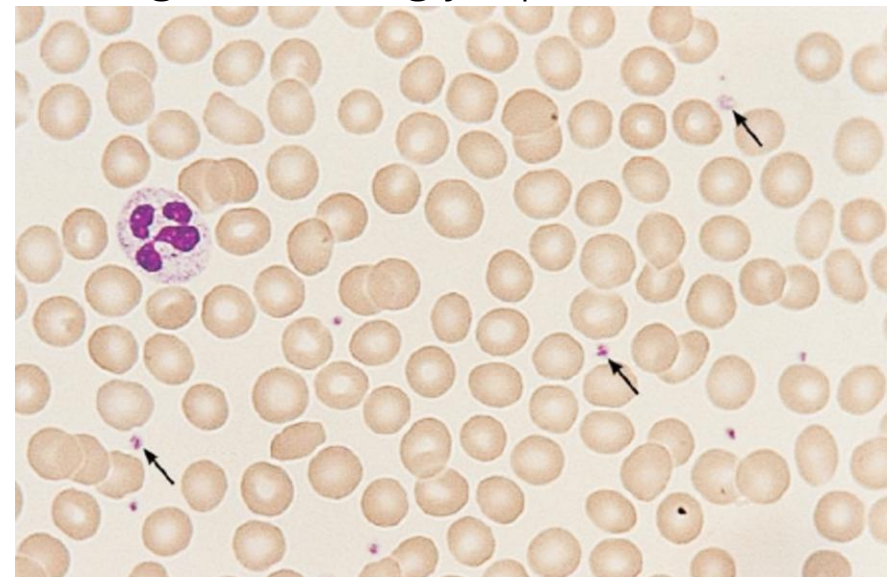
The groin
lesion of a
24 y-o
femal
patient,
Microscopic
features
resemble
those of
eczema.

Gianotti-Crosti syndrome (papular acrodermatitis of childhood). Pediatric papular skin rash after viral infection. Sk-358-2-Vir



skin rash on the
knee of a child.
Borrowed from:
<https://www.mori-hihuka.com/sikkan/giano.html>

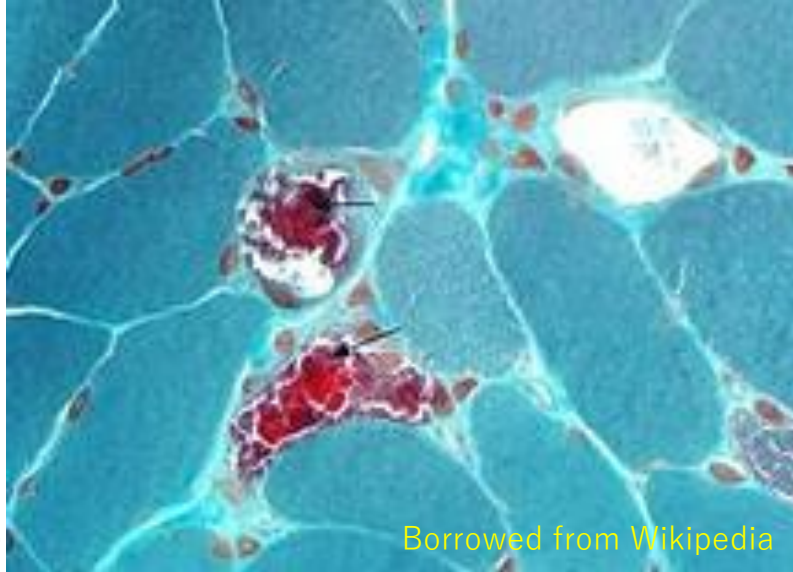
Glanzmann's thrombasthenia (hereditary coagulopathy with platelets containing defective glycoprotein IIb/IIIa, the receptor for fibrinogen). Hemato-46-3-BM



In GT,
platelet
count and
size/shape
are normal
(arrows).

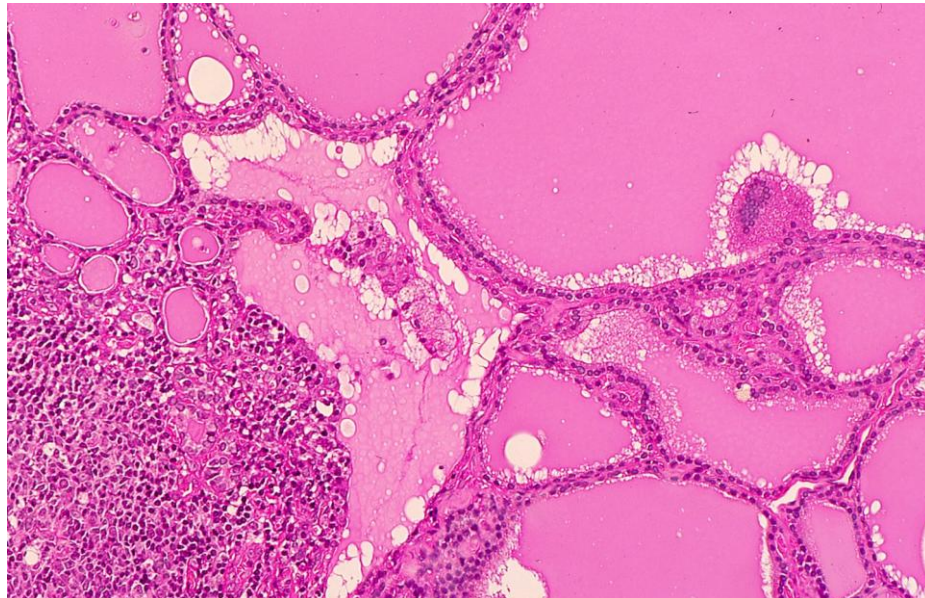
Gömöri's trichrome stain (for distinguishing collagen fibers from muscle fibers)

Modified Gömöri trichrome stain is a histological stain mainly used on muscle tissue, particularly for detecting ragged red fibers (arrows) in mitochondrial myopathy (MELAS).

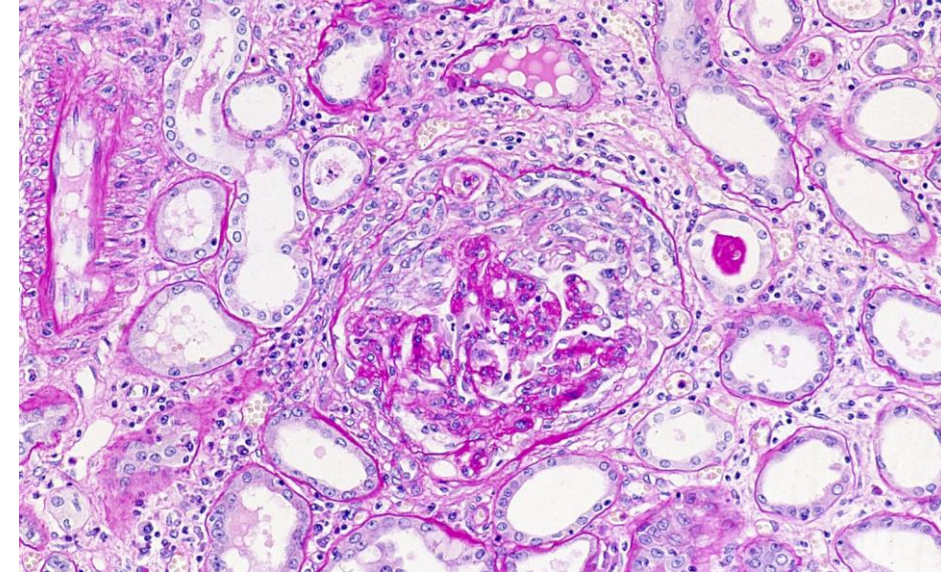


Graves' disease/Basedow's disease (autoimmune hyperthyroidism). Endo-22-1-Thyroid, Endo-22-2-Thyroid

papillary infoldings, scalloping in the colloid and lymphocytic clustering



Goodpasture syndrome (anti-GBM disease). Uro-31-1-3-kidney, Lung-30-autoimmune



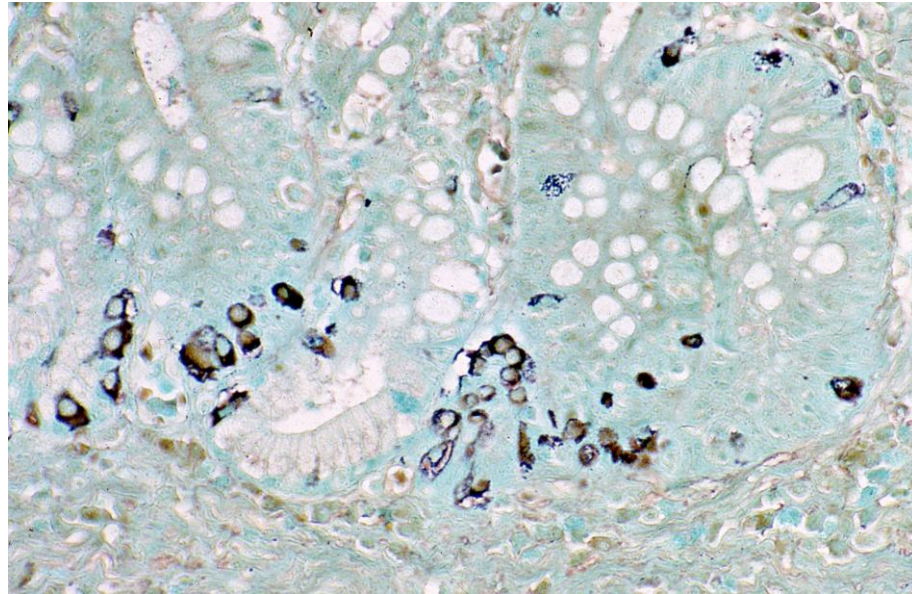
crescentic glomerulonephritis (PAS)

Grawitz' tumor (old term of renal cell carcinoma) Uro-92-1-1-kidney through Uro-92-5-kidney



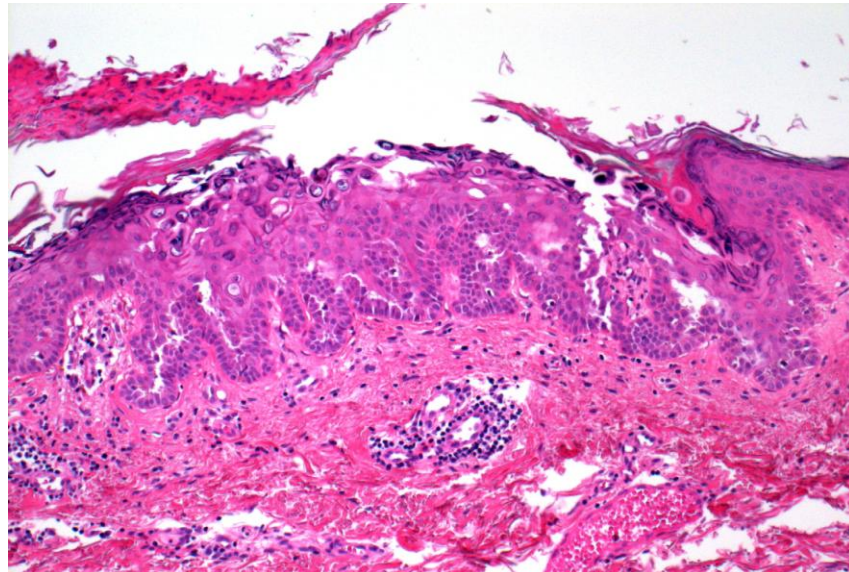
a yellow-colored demarcated tumor

Grimelius stain (argyrophilic silver staining for detecting neuroendocrine cells). GI-80-6-stomach



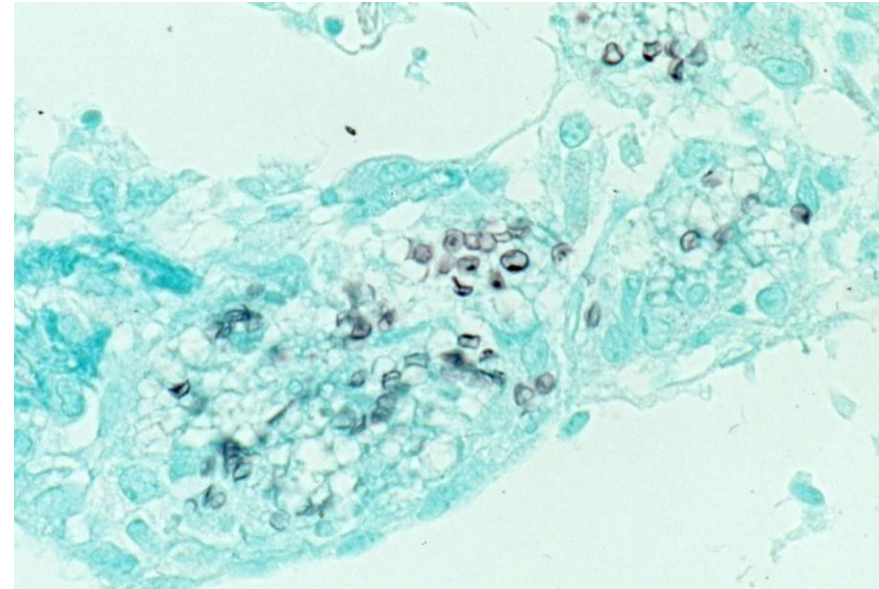
argyrophil cell hyperplasia in intestinal metaplasia of the stomach

Grover's disease (transient acantholytic dermatosis on sun-damaged skin of the aged). Sk-74-Bull



acantholytic bulla in the abdominal skin of a 31 y-o woman

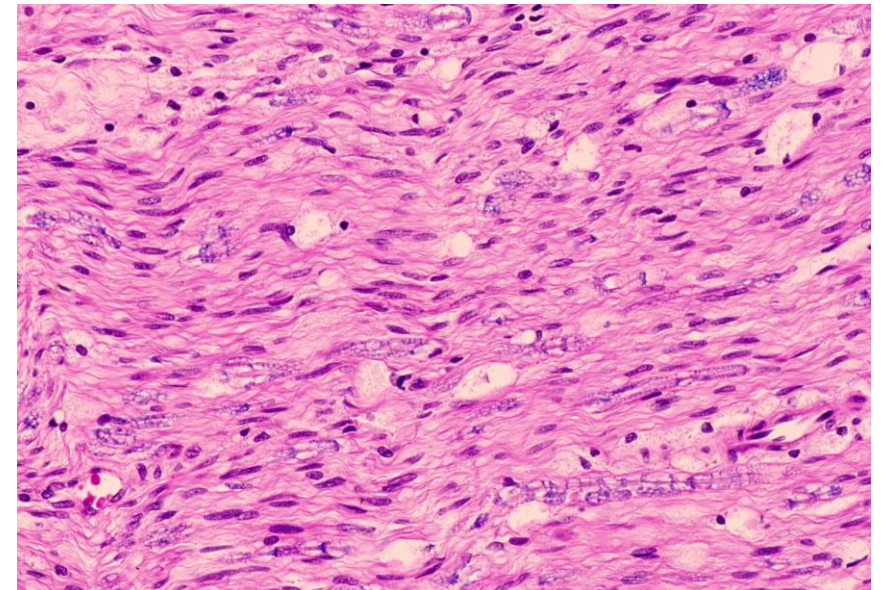
Grocott stain (methenamine silver stain for detecting fungi). Lung-121-1-fung through Lung-121-3-fung



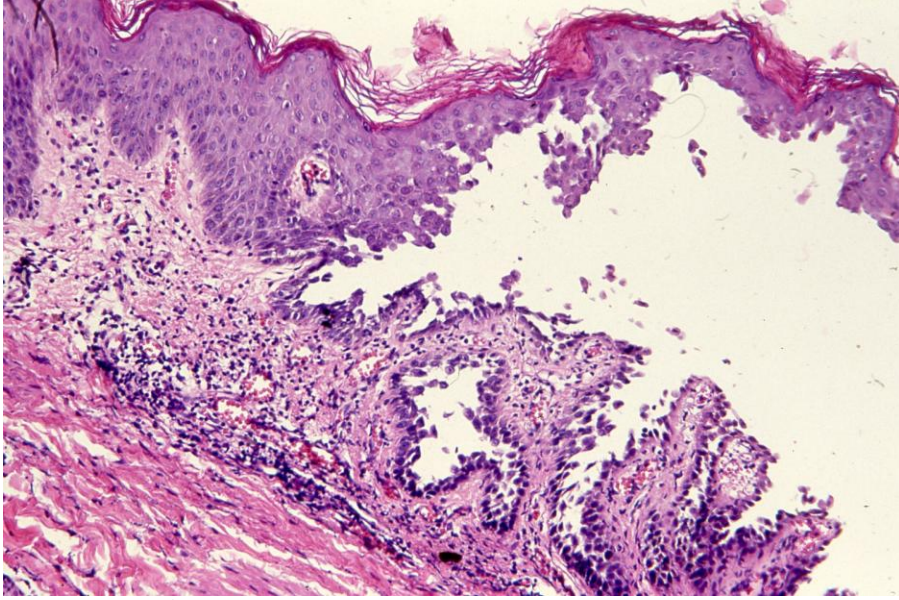
Grocott methenamine silver (GMS) stains fungal walls with high polysaccharide density in black. *Pneumocystis jirovecii* in a TBLB sample is demonstrated with GMS.

Guillain-Barré syndrome (autoimmune peripheral neuropathy involving motor nerves). neuro-166-1-peripheral, neuro-166-2-peripheralIN

marked loss of myelin sheaths and perivascular lymphocytic infiltration (LFB-H&E)

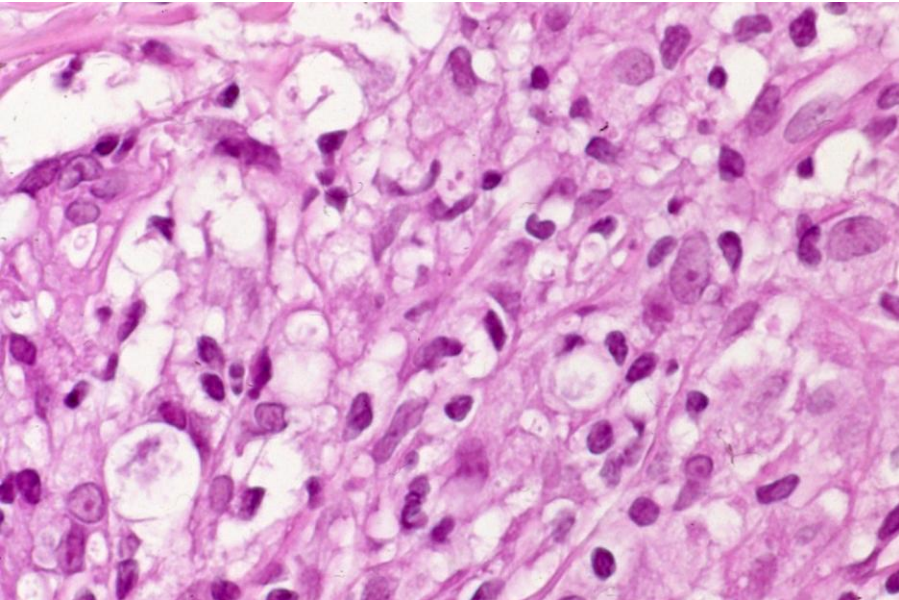


Hailey-Heiley disease (familial benign chronic pemphigus). Sk-76-Bull



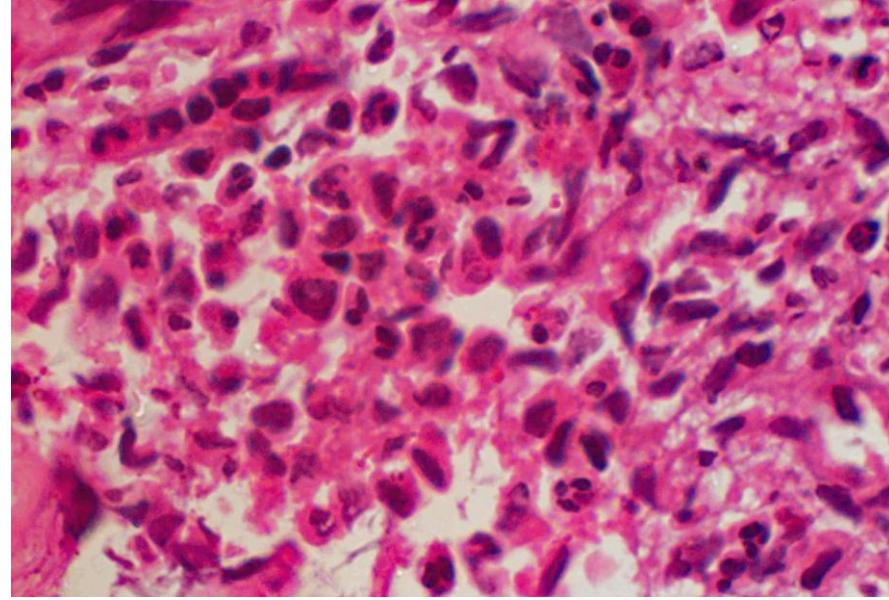
bullae on the axillary skin of a 60 y-o man

Hansen's disease (lepromatous leprosy with foamy macrophages). Sk-295-1-Bact through, Sk-296-4-Bact



leproma cells contain "globi" (clustered *Mycobacterium leprae*)

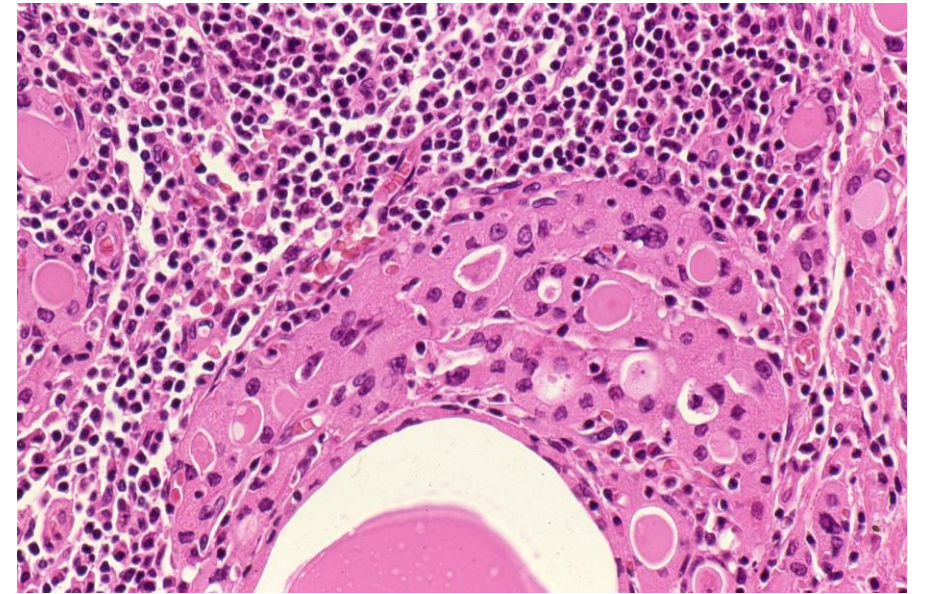
Hand-Schüller-Christian disease (Langerhans cell histiocytosis), involving the orbit



orbital involvement by Langerhans histiocytes with eosinophilia seen in a newborn girl

Hashimoto thyroiditis (chronic autoimmune thyroiditis). Endo-27-1-Thyroid and Endo-27-2-Thyroid

lymphocytic infiltration and oncocytic change of the follicular cells



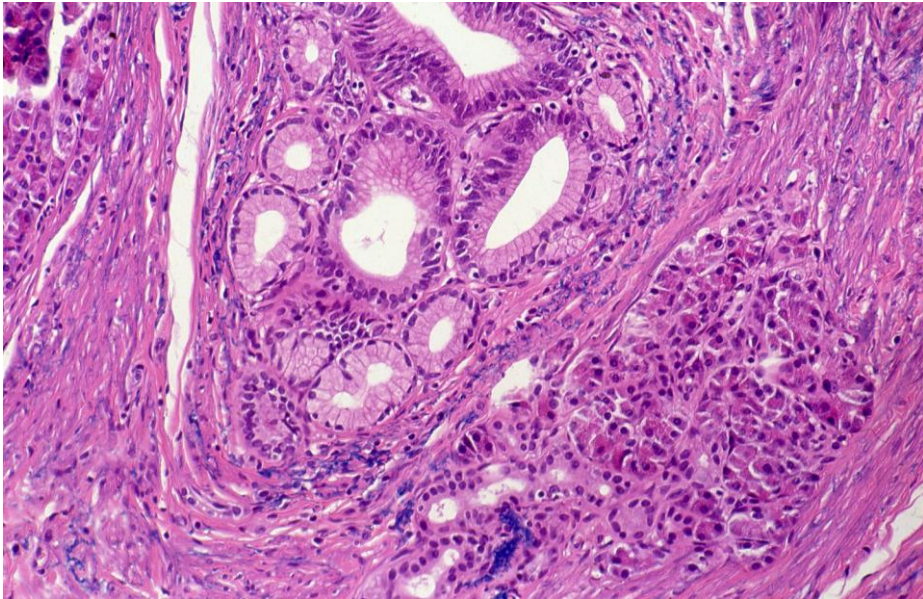
Heberden's nodule (osteoarthritis of DIP joint of the finger). ConnectT-10-6-joint

painful swelling of the DIP joint of the 5th finger



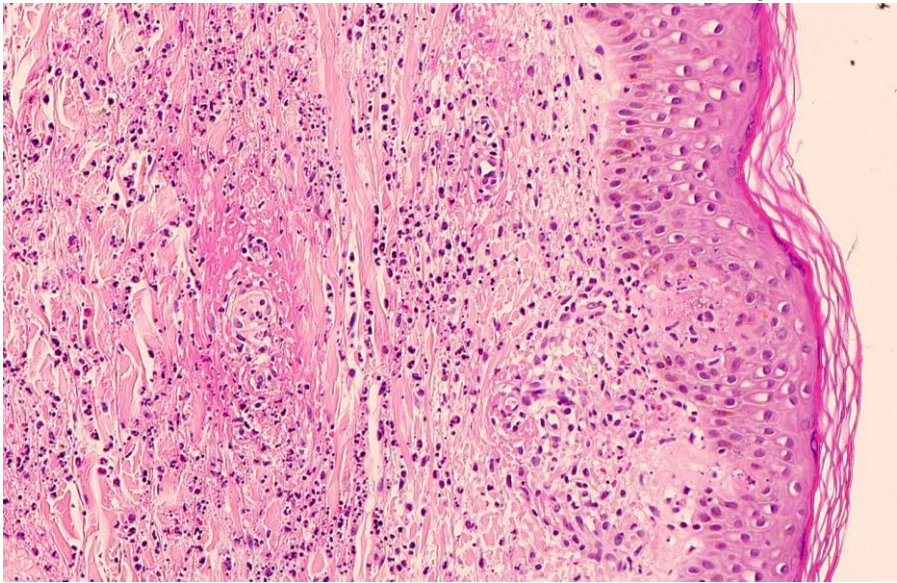
Heinrich typing of ectopic pancreas. Gl-178-1-small bowel through Gl-178-3-small bowel

ectopic pancreas of the jejunum Heinrich type 2 (ducts and acinar cells)



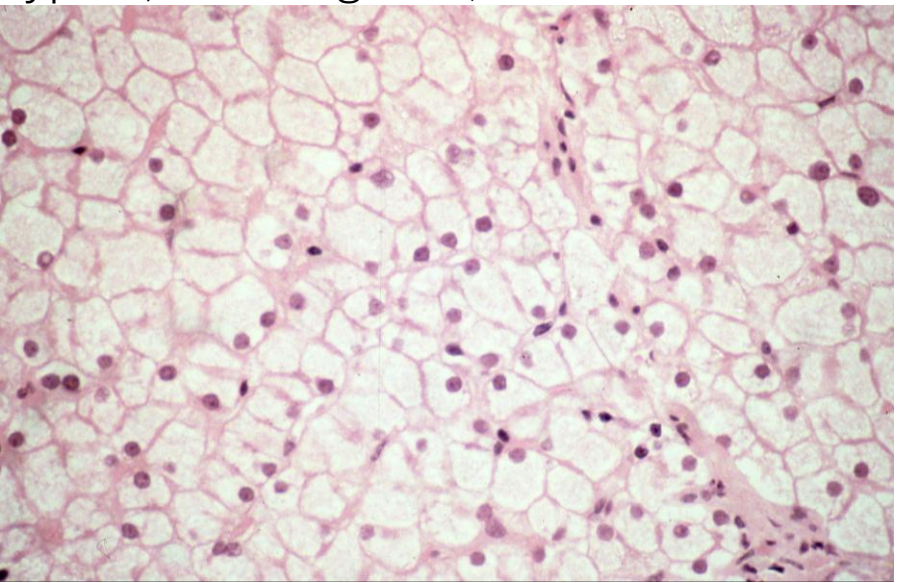
Henoch-Schönlein purpura (anaphylactoid purpura, IgA vasculitis). Sk-101-Vascul, Uro-26-1-kidney, Gl-203-2-small bowel

necrotizing angiitis with eosinophilia in the upper dermis

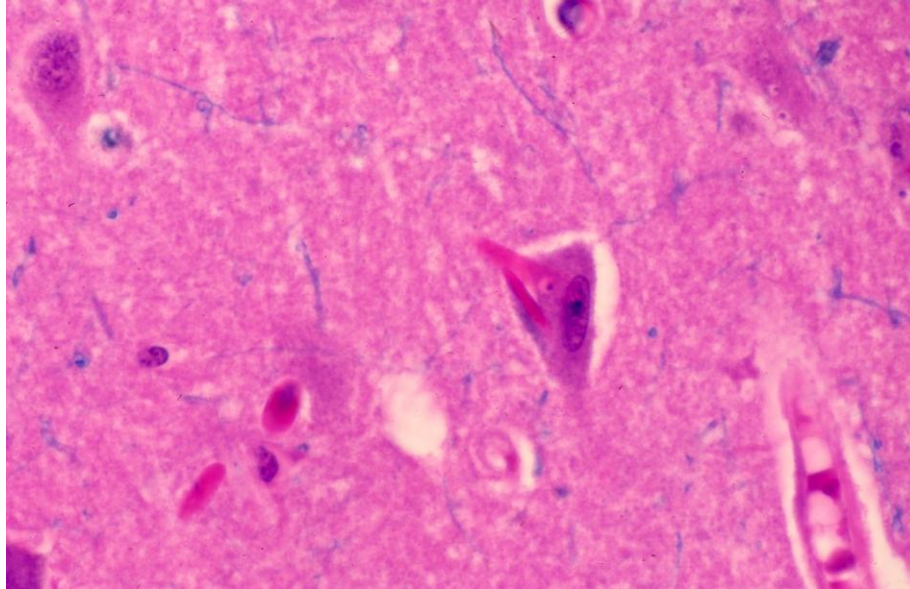


Her's disease (Glycogen storage disease, type 6, involving liver). HBP-99-1-liver

massive glycogen deposition in hepatocytes

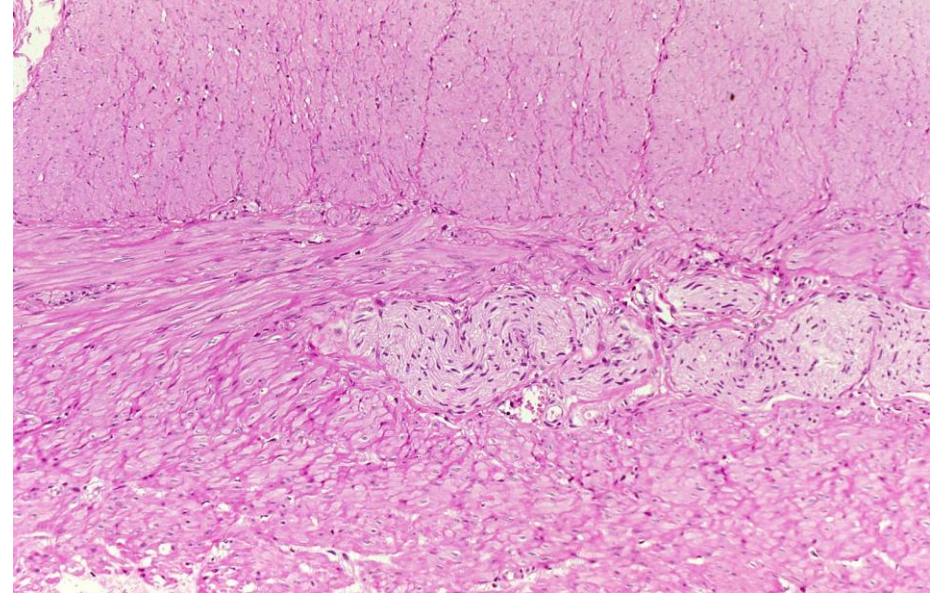


Hirano body (rod-shaped eosinophilic crystalline inclusions in Alzheimer's disease). neuro-63-a-brain



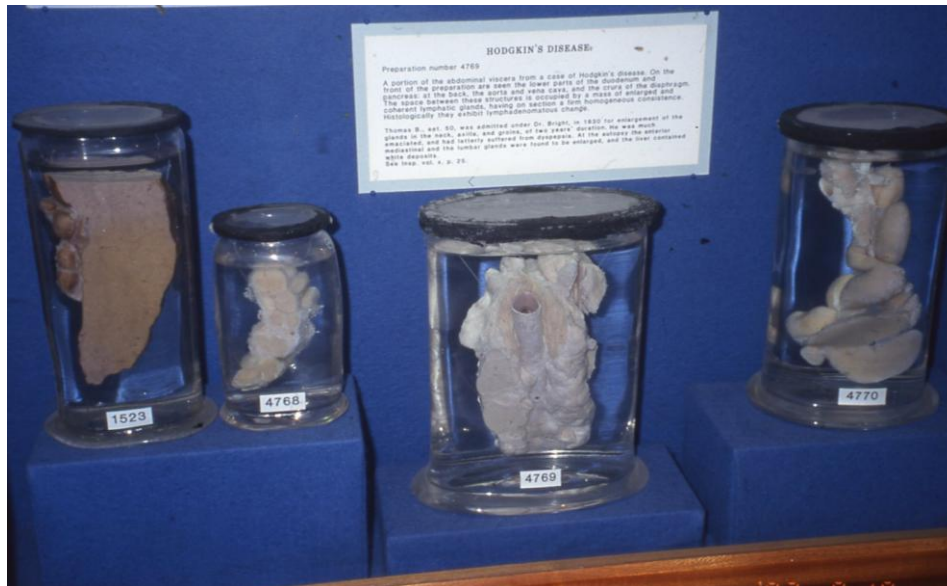
Hirano bodies, representing axonal swelling, are seen in the hippocampus in Alzheimer's disease.

Hirschsprung's disease (aganglionosis with congenital megacolon). GI-333-1-colorectum



aganglionosis in Auerbach's nerve plexus (1 y-o boy)

Hodgkin's lymphoma. Hemato-44-spleen, Hemato-151-1-LN through Hemato-152-8-LN



formalin-fixed tissues autopsied by Thomas Hodgkin in 1820's (Gordon Museum, London)

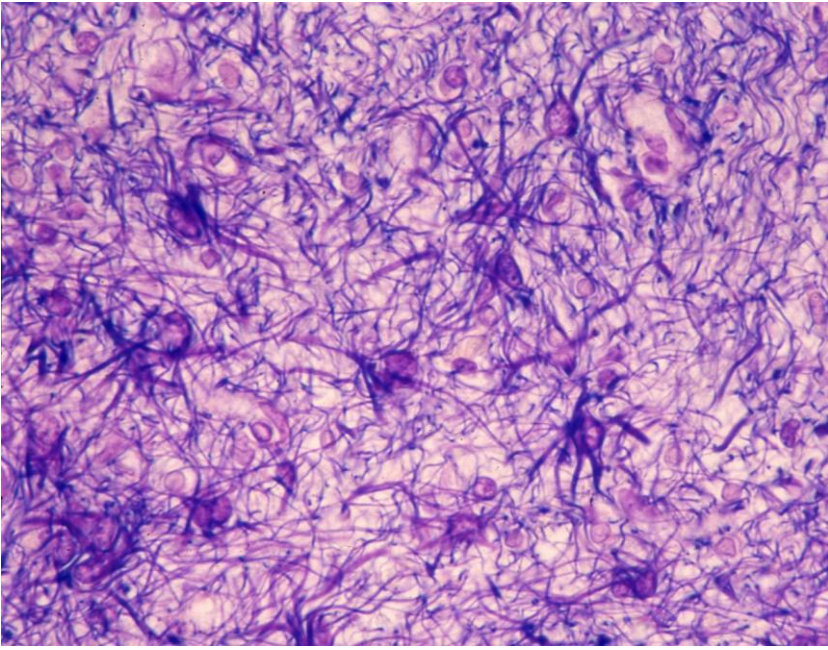
Hoffmann syndrome (hypothyroid myopathy). neuro-191-b-Smuscle



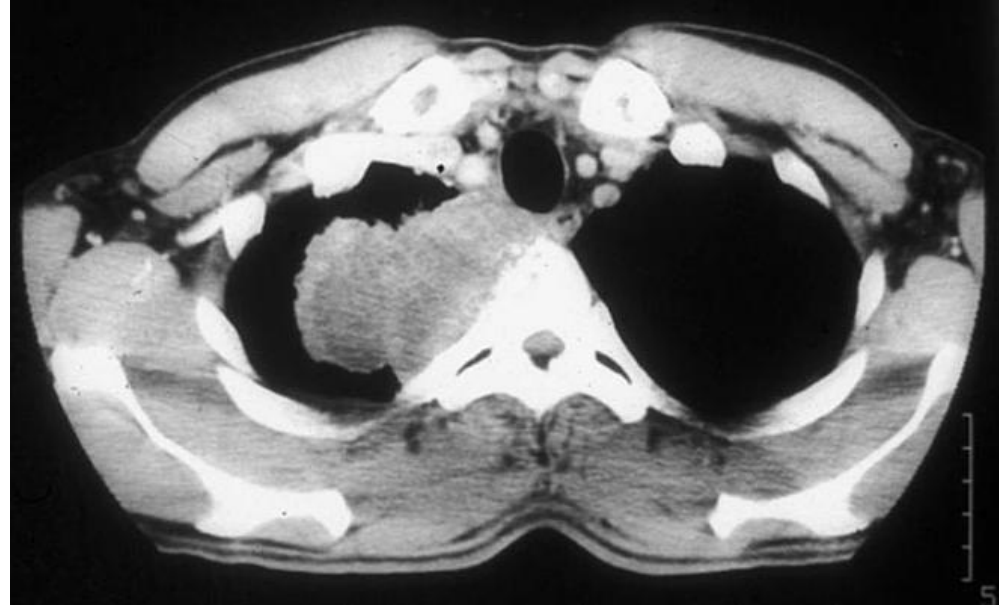
The upper arms and shoulders show pseudohypertrophy due to deposition of myxoid materials (myxedema).

Holzer stain (astroglial stain)

Astroglia fibers are stained with crystal violet, being resistant to the aniline-chloroform differentiating solution. Gliosis in the ventral part of pons in Shy-Drager syndrome is shown,



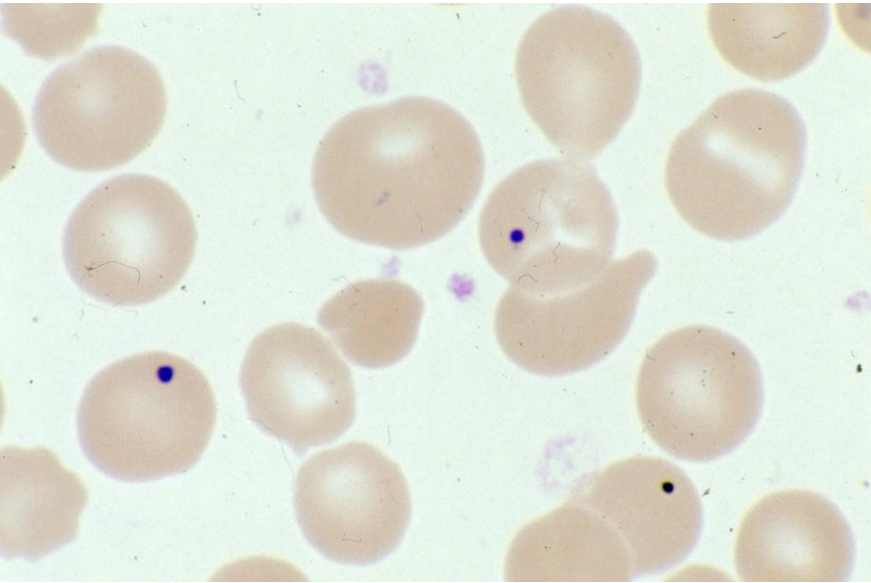
Horner's syndrome (ptosis, miosis, anhidrosis and hyperemia affecting one side of the face). Lung-186-malignantT



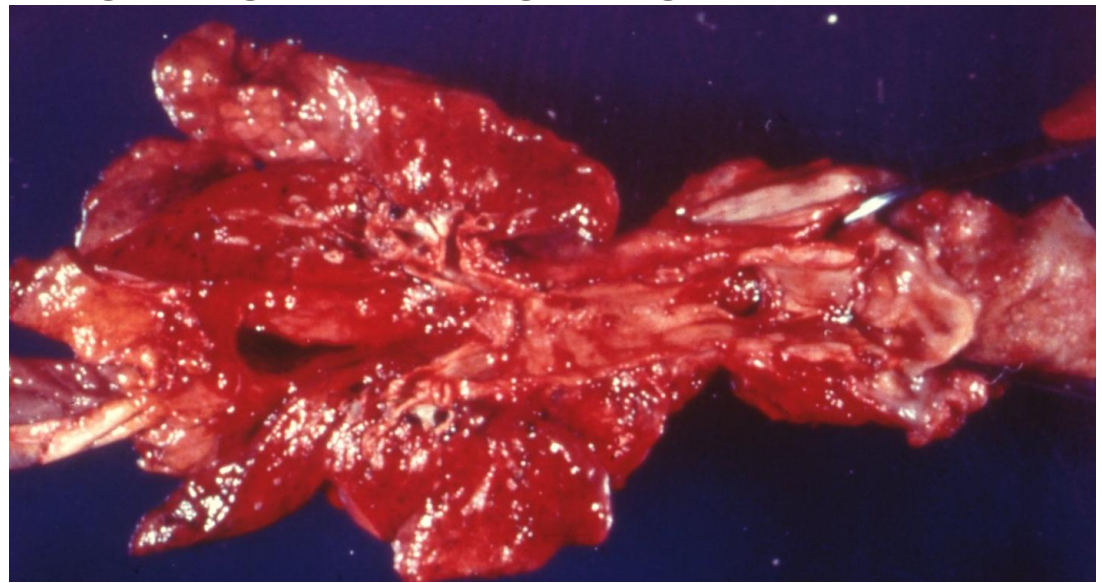
chest CT scan of Pancoast-type lung cancer of a 65 y-o male smoker

Howell-Jolly body (basophilic nuclear remnants seen in a splenectomized patient). cyto-76-PB

dot-like DNA remnants in RBCs



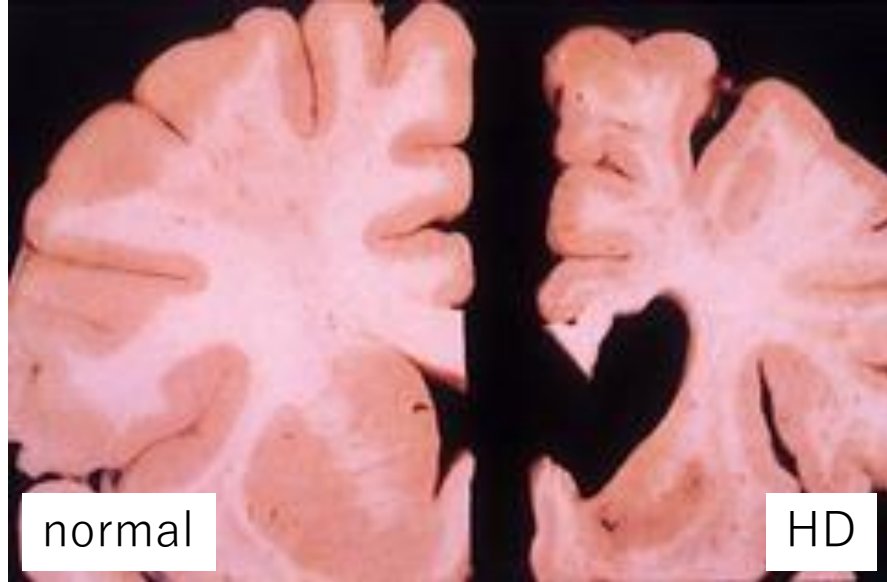
Hurler Hunter's syndrome (mucopolysaccharidosis) Lung-9-1-genera, lLung-9-2-general



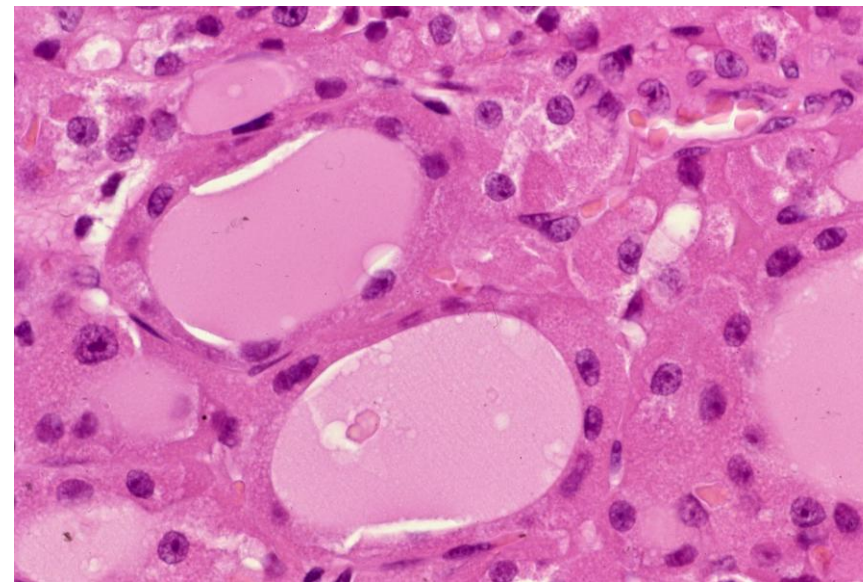
X-linked Hunter syndrome with marked deformity of the trachea, causing respiratory failure

Huntington's disease (autosomal dominant mental/psychiatric disorder). neuro-14-brain

marked atrophy of the caudate nucleus and dilatation of the lateral ventricle



Hürthle cell tumor (oncocyoma of the thyroid). Endo-32-1-Thyroid, Endo-32-2-Thyroid



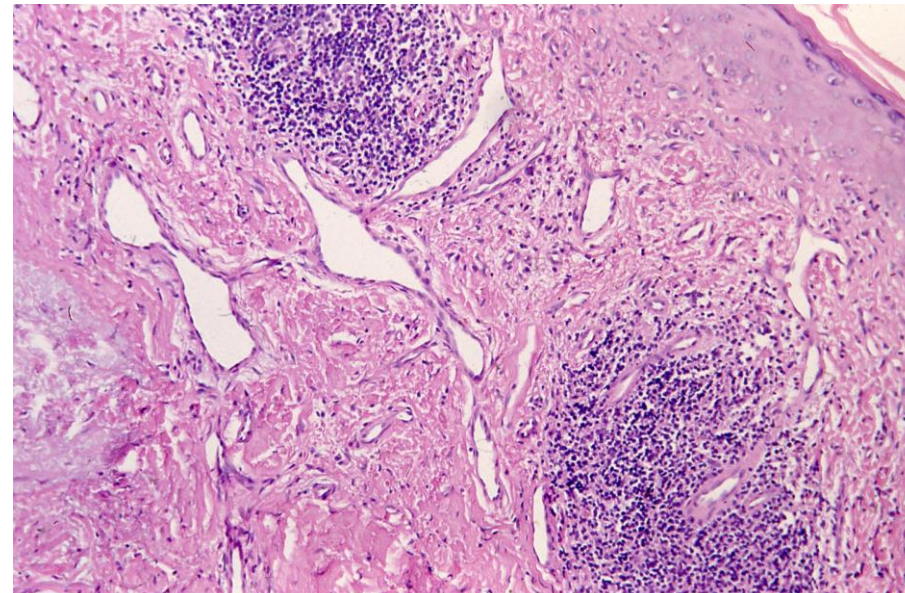
The oncocytes with plump eosinophilic cytoplasm are filled with mitochondria.

Ito's nevus (nevus of Ito): ectopic melanocytes in the dermis of the shoulder and upper arm.

pigmented patch on the shoulder. borrowed from Perri Dermatology



Jessner lymphocytic infiltrate (pseudolymphomatous plaque on the face and neck). Sk-34-Lymph



a plaque lesion on the cheek of a 50 y-o female patient