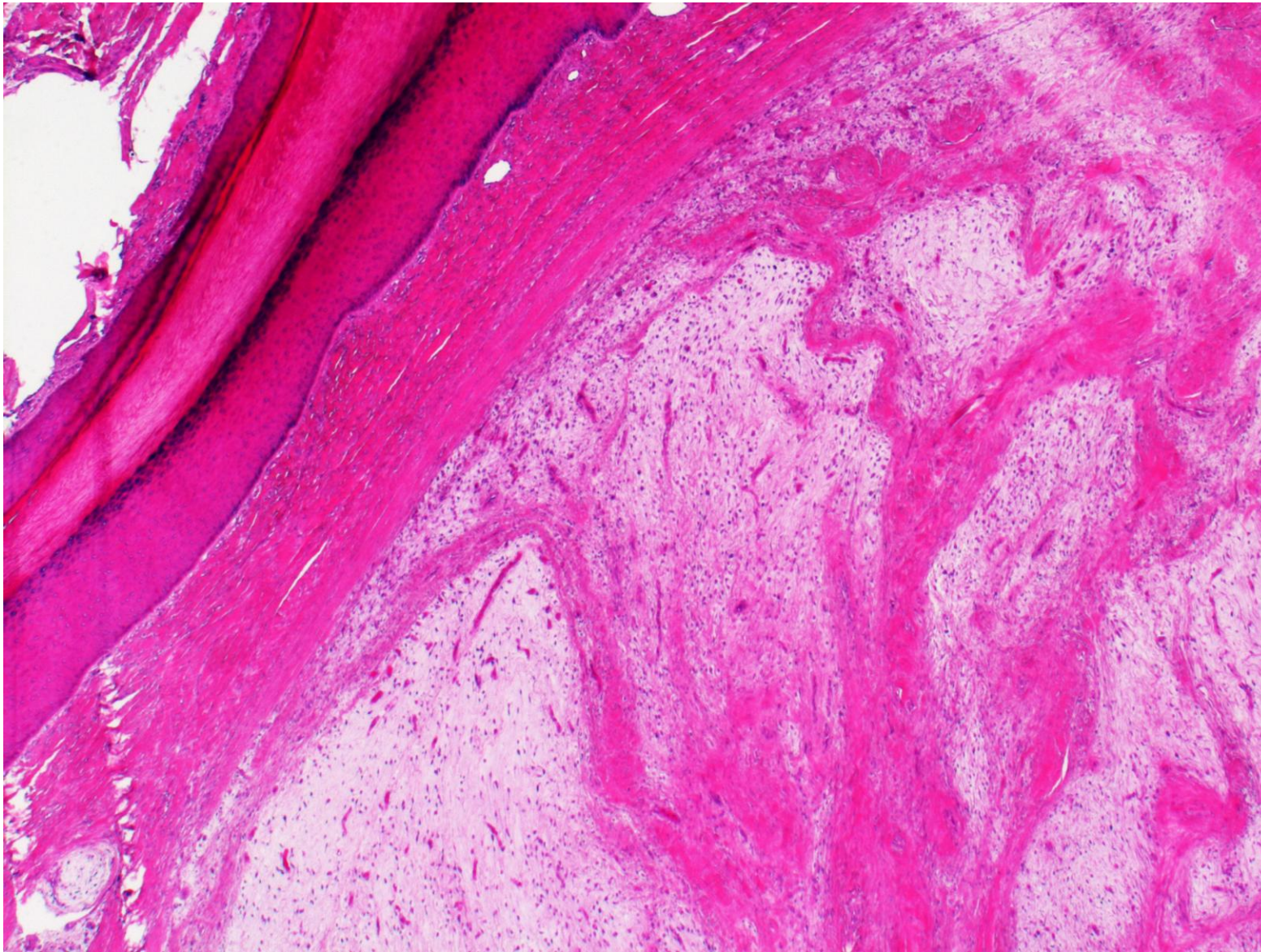


# Subungal myxoma

Varied skin lesions show prominent myxomatous changes in the dermis, including cutaneous myxoid cyst, papular mucinosis, localized myxedema and ganglions. True cutaneous myxoma is rare. Subungual myxoma may accompany partial destruction of the underlying phalanx. Cutaneous true myxoma may be equivalent to superficial angiomyxoma. Subungal myxoma has been reported under the term superficial subungual angiomyxoma. Microscopically, spindle and stellate cells are embedded in the myxoid stroma. When vascular and cellular elements are evident, it should be called as superficial angiomyxoma.

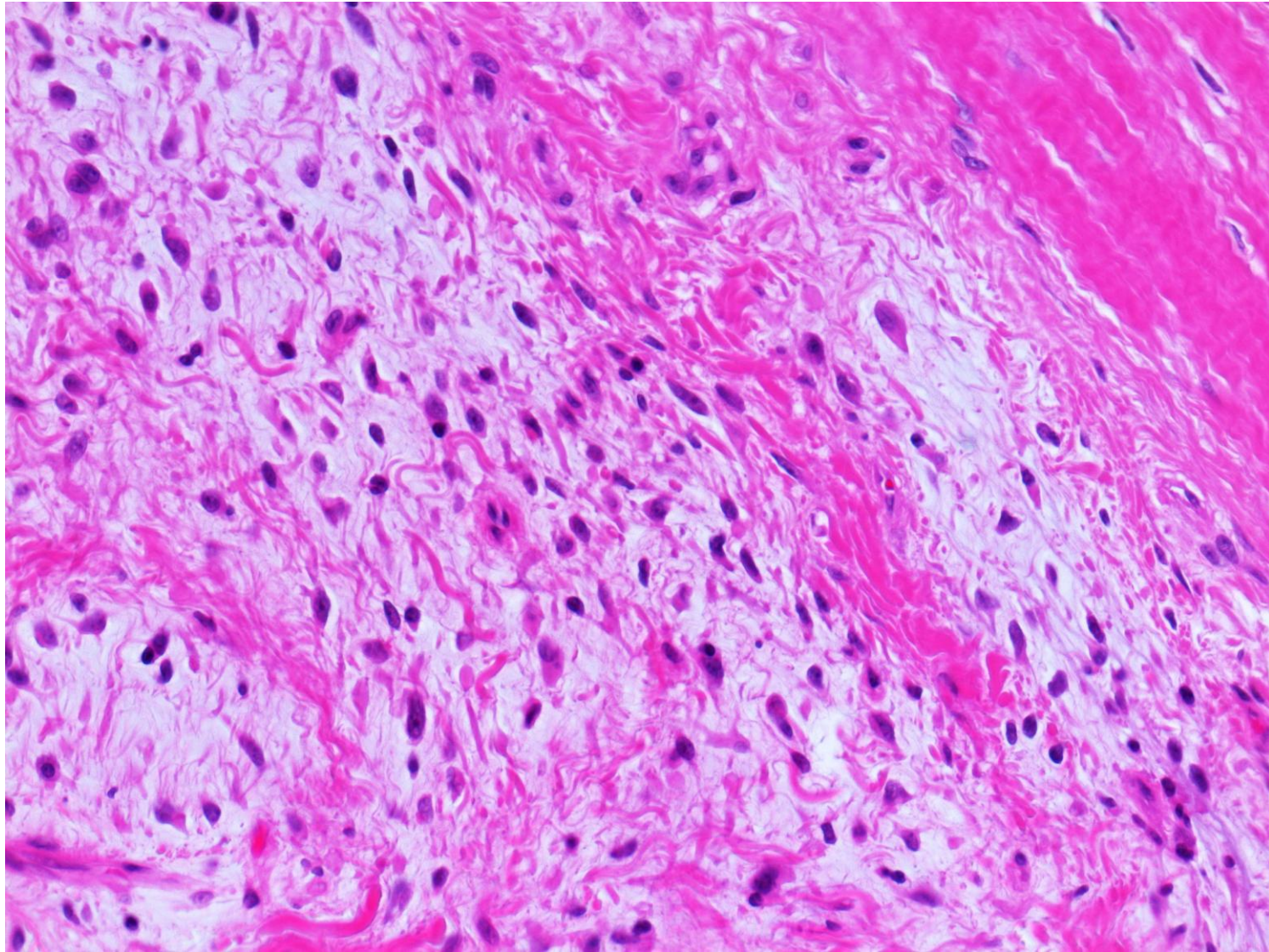
Ref.-1: Sanusi ID. Subungual myxoma. Arch Dermatol 1982; 118(8): 612-614.  
doi:10.1001/archderm.1982.01650200080024

Ref.-2: Malpass KG, et al. Superficial subungual angiomyxoma. Plast Surg 2002; 10(2): 85-88. doi: 10.1177/229255030201000207



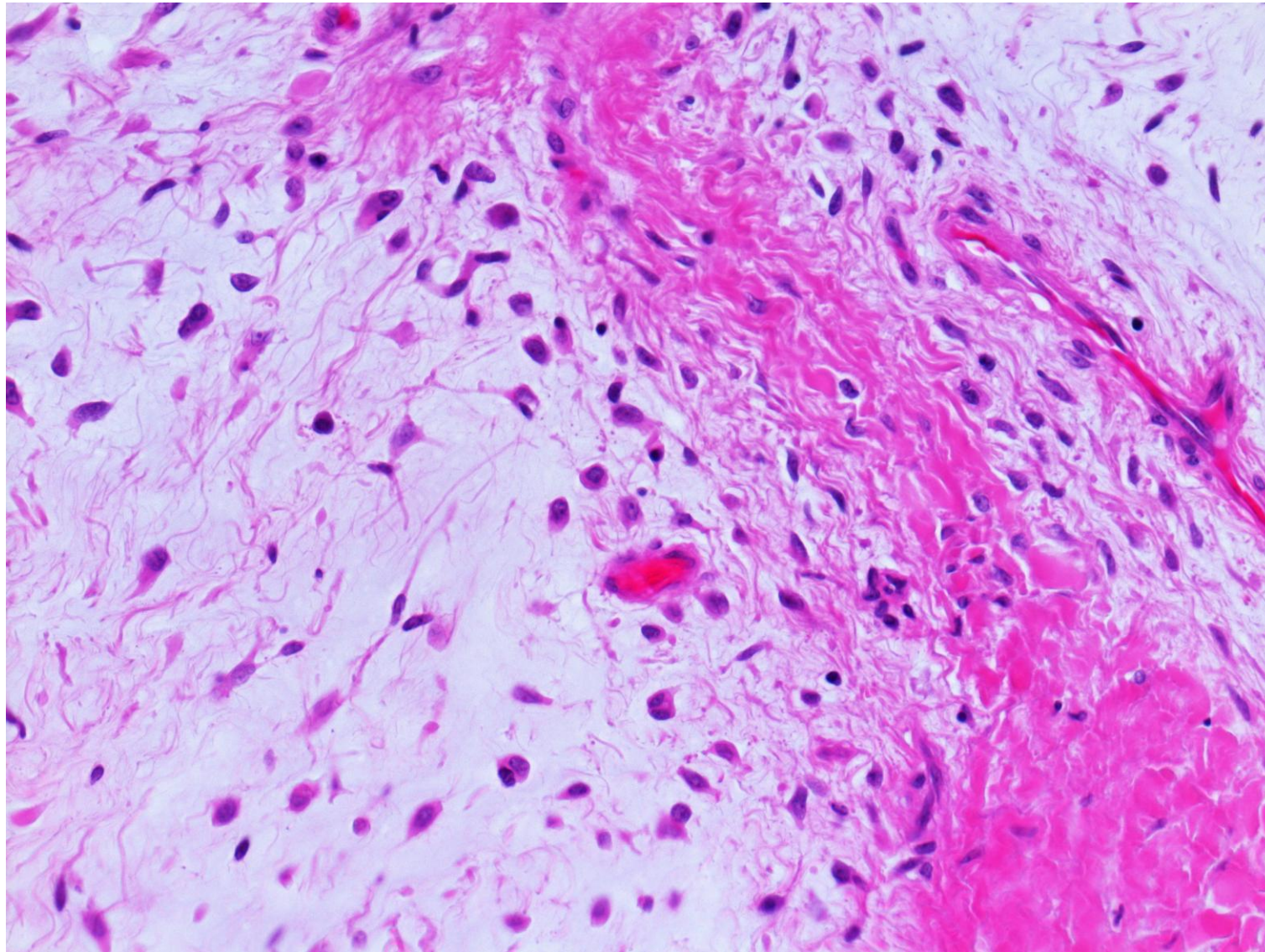
Subungual myxoma seen in the big toe of a 59 y-o male patient. The dermis is occupied by the myxoid lesion with interspersed collagen bundles. The unguis epidermis is compressed (H&E-1).





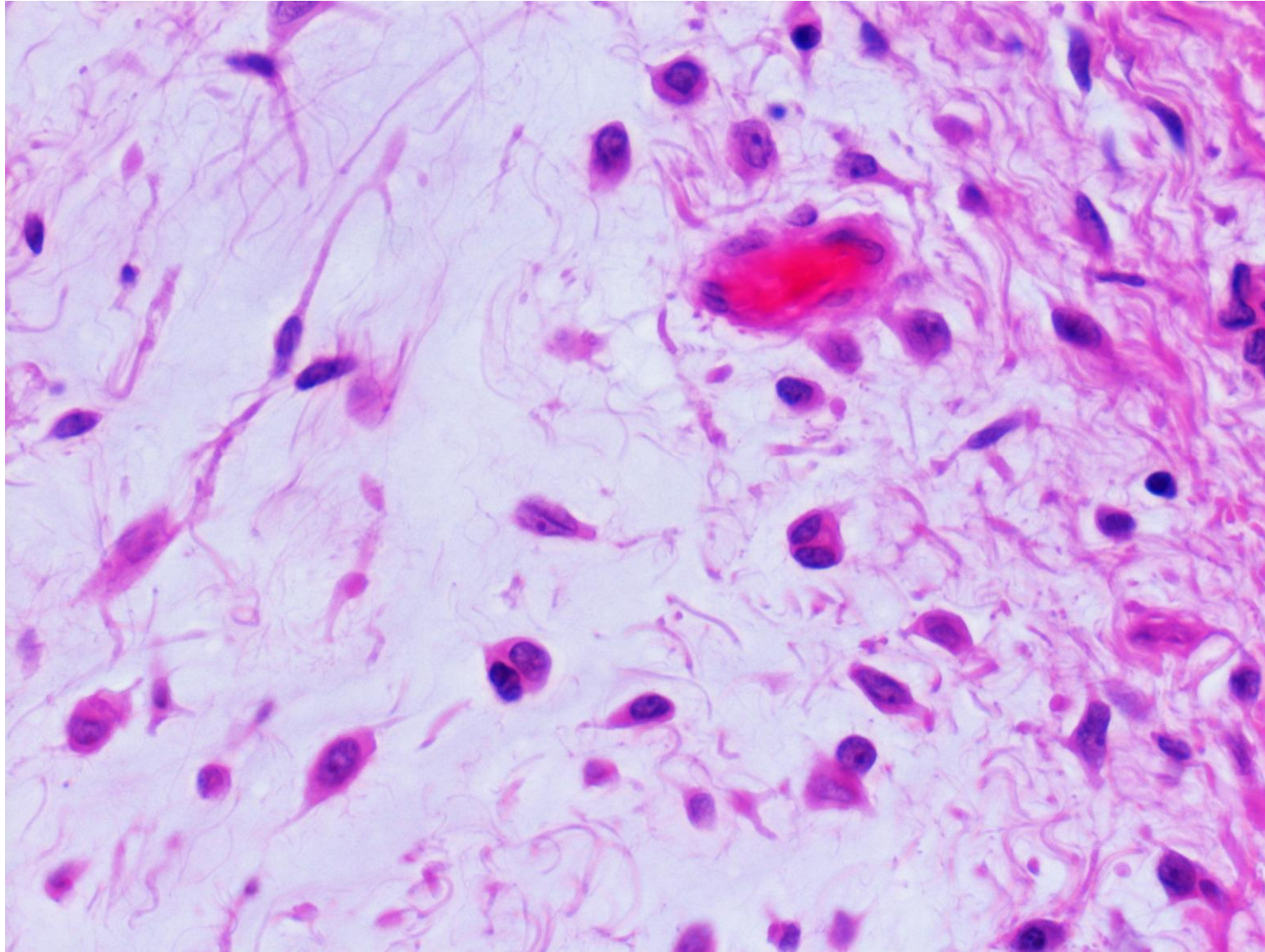
Subungual myxoma seen in the big toe of a 59 y-o male patient. Fibroblastic cells are dispersed among the markedly myxoid matrix. Cellularity and vascularity are not high. Collagenous bundles are seen (H&E-2).



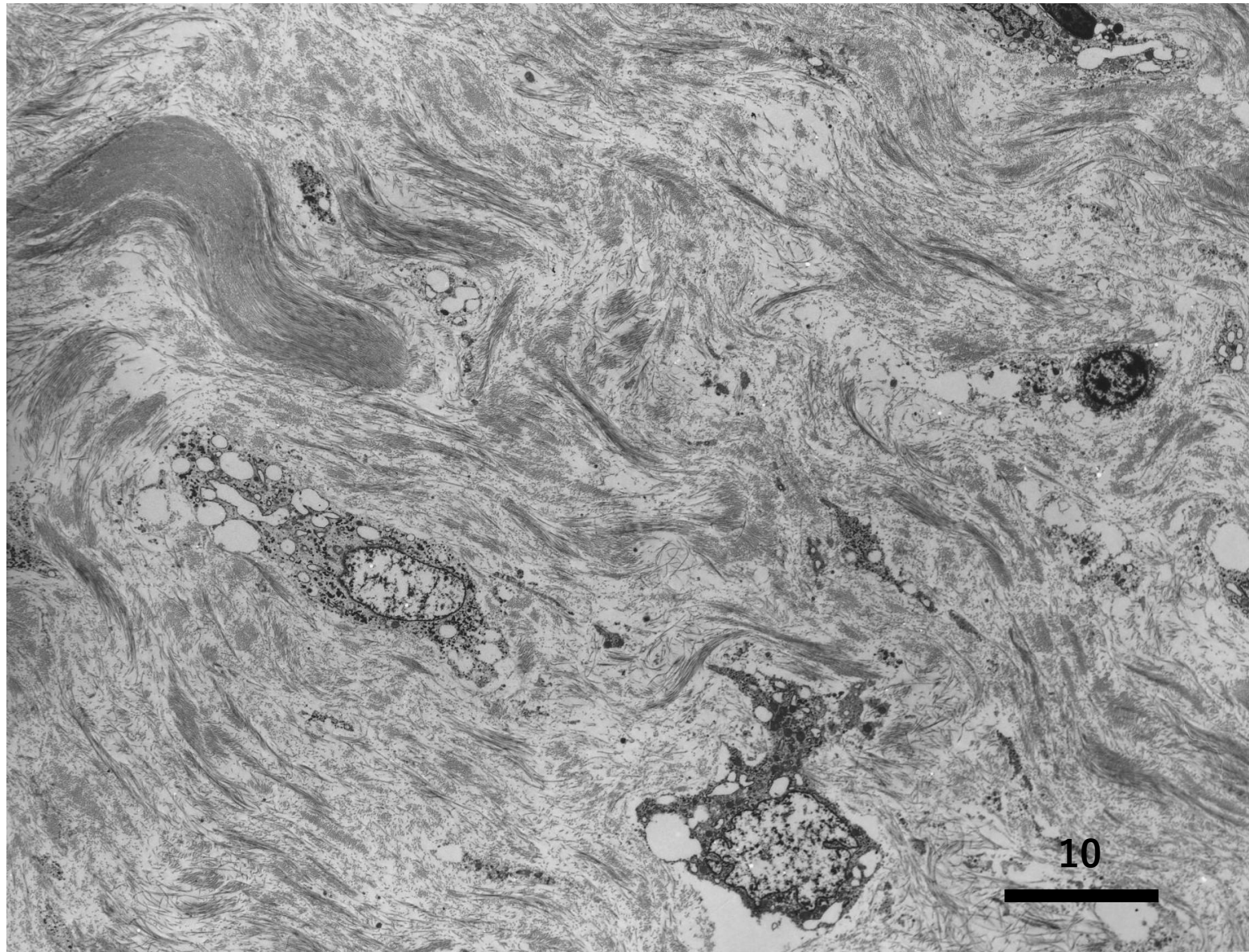


Subungual myxoma seen in the big toe of a 59 y-o male patient. Fibroblastic cells are dispersed among the markedly myxoid matrix. Cellularity and vascularity are not high. Collagenous bundles are seen (H&E-3).



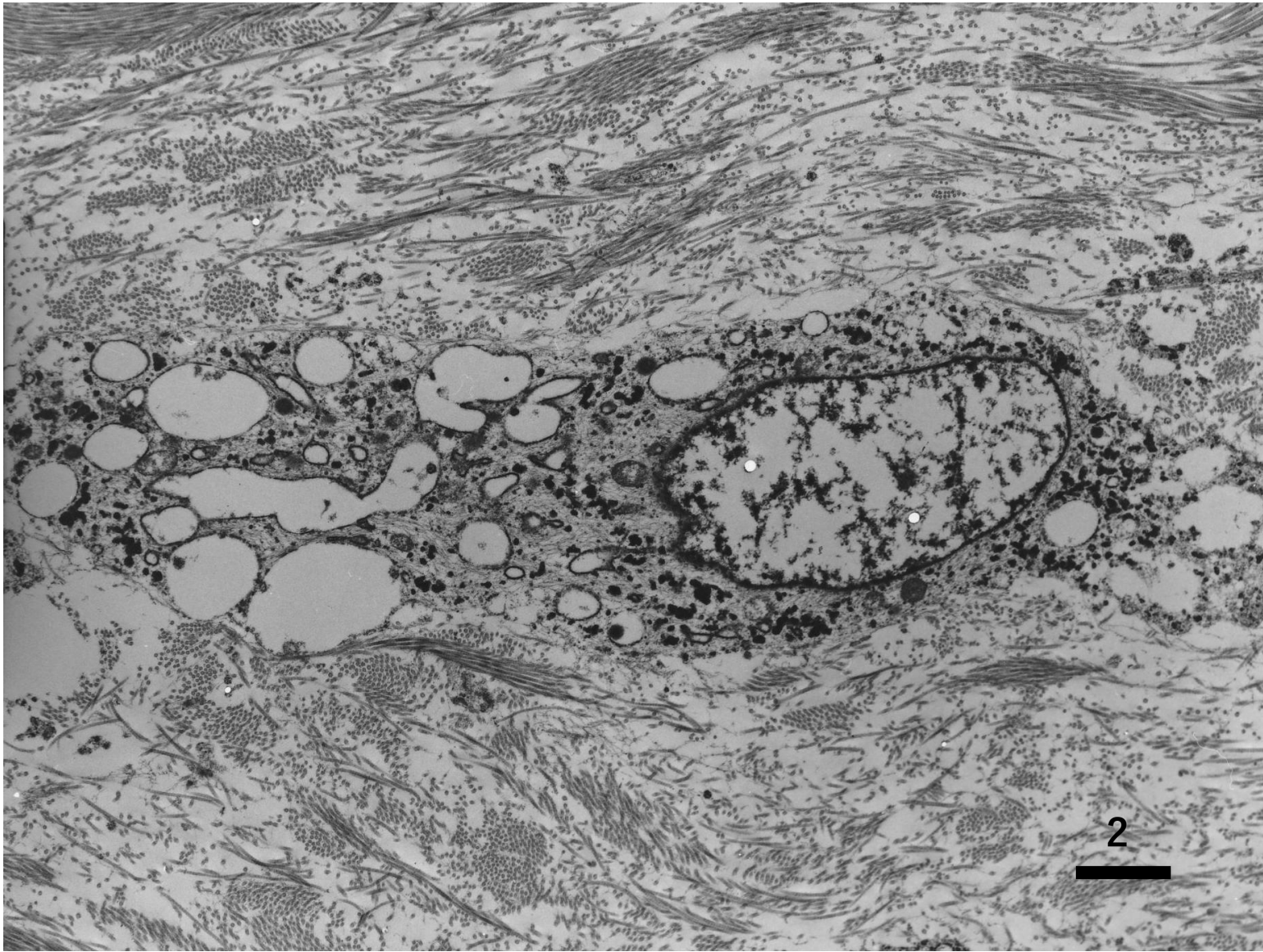


Subungual myxoma seen in the big toe of a 59 y-o male patient. Fibroblastic cells are dispersed among the markedly myxoid matrix. Cellularity and vascularity are not high. Mast cells are intermingled (H&E-2).



Ultrastructure of subungual myxoma seen in the big toe of a 59 y-o male patient. Fibroblastic cells are embedded in the myxoid matrix. The cellularity is low (EM-1).





Ultrastructure of subungual myxoma seen in the big toe of a 59 y-o male patient. The fibroblastic cell embedded in the myxoid matrix shows cisternal dilatation of the rough endoplasmic reticulum. Glycogen particles are rich in the cytoplasm. Collagen fibrils are dispersed in the matrix (EM-2).



Ultrastructure of subungual myxoma seen in the big toe of a 59 y-o male patient. Mast cells are scattered in the myxoid matrix of the tumor (EM-3).